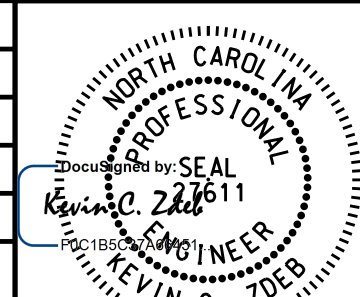


5/14/2017

PROJECT REFERENCE NO.	SHEET NO.
U-3621A	UC-07
DESIGNED BY: GJB	
DRAWN BY: GJB	
CHECKED BY: KCZ	
APPROVED BY: KCZ	
REVISED:	3/22/2017
NORTH CAROLINA DEPARTMENT OF TRANSPORTATION	UTILITY CONSTRUCTION PLANS ONLY
UTILITIES ENGINEERING SEC. PHONE: (919) 707-6690 FAX: (919) 250-4151	

UTILITY CONSTRUCTION

DOCUMENT NOT CONSIDERED FINAL UNLESS ALL SIGNATURES COMPLETED

M A Engineering Consultants, Inc.
 598 East Chatham Street Suite 137 Cary, NC 27511
 Phone: 919.297.0220 License: F-0160 Fax: 919.297.0221

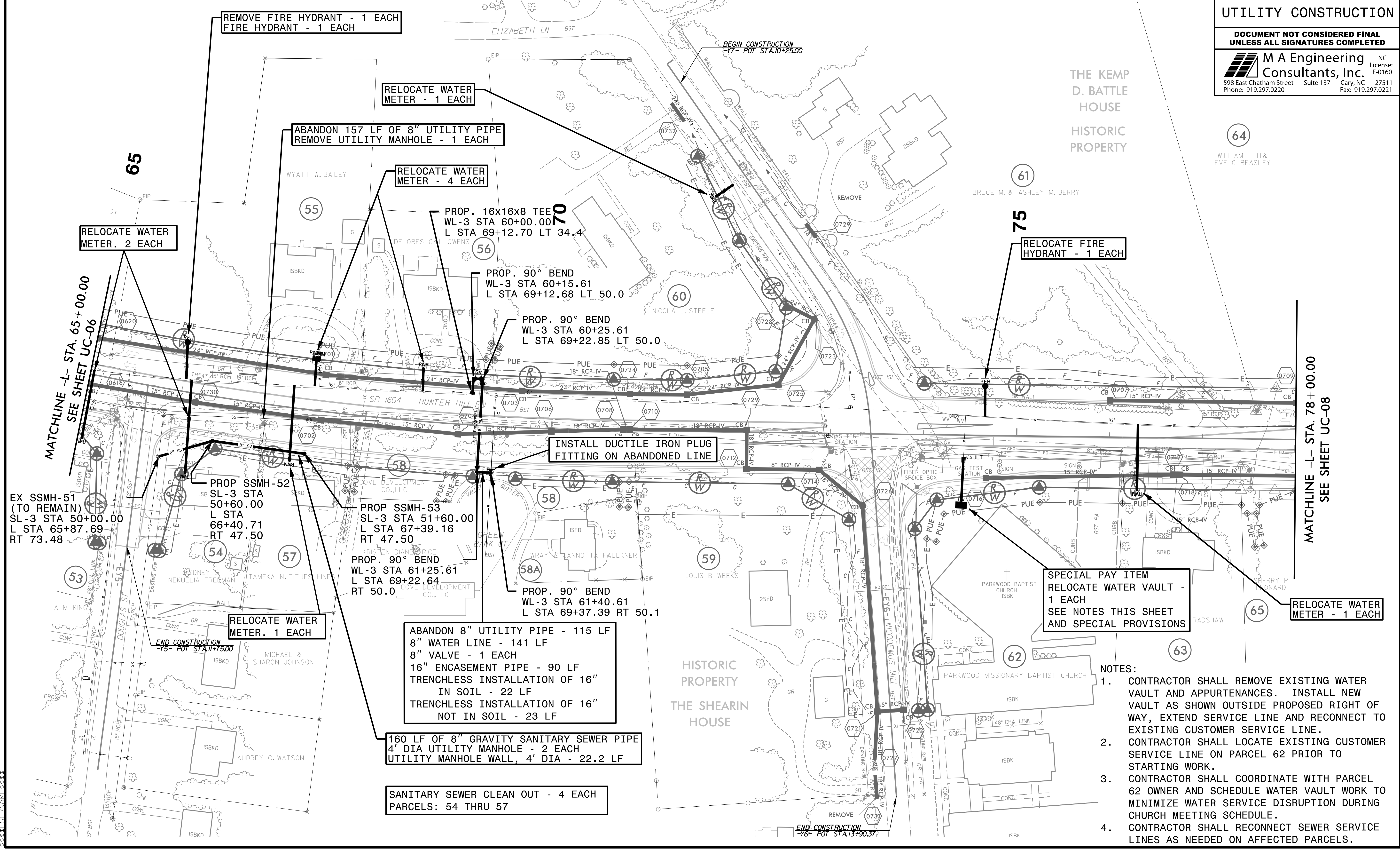
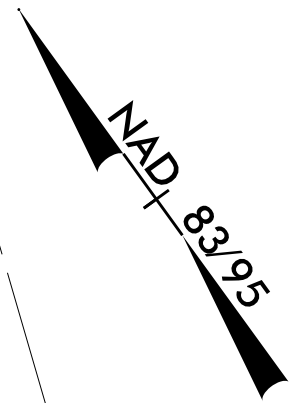
64
WILLIAM L III & EVE C BEASLEY

THE ESTIMATED QUANTITY OF DUCTILE IRON WATER PIPE FITTINGS ON THIS PLAN SHEET IS 840 POUNDS. THE ACTUAL QUANTITY AND TYPE OF FITTINGS WILL VARY BASED ON FIELD CONDITIONS.

SEE SHEET UC-09 FOR WL-3 PROFILE.
SEE SHEET UC-10 FOR SL-3 PROFILE.

UTILITY OWNERS ON THIS PROJECT:

CITY OF ROCKY MOUNT
WATER LINES: 8", 12", 16"
SANITARY SEWER: 8"
CONTACT: DONALD M. PERRY, PE
PHONE: (252) 972-1122



MATCHLINE -L- STA. 65+00.00
SEE SHEET UC-06

MATCHLINE -L- STA. 78+00.00
SEE SHEET UC-08

EX SSMH-51
(TO REMAIN)
SL-3 STA 50+00.00
L STA 65+87.69
RT 73.48

PROP SSMH-52
SL-3 STA 50+60.00
L STA 66+40.71
RT 47.50

PROP SSMH-53
SL-3 STA 51+60.00
L STA 67+39.16
RT 47.50

PROP. 90° BEND
WL-3 STA 61+25.61
L STA 69+22.64
RT 50.0

PROP. 90° BEND
WL-3 STA 61+40.61
L STA 69+37.39 RT 50.1

ABANDON 8" UTILITY PIPE - 115 LF
8" WATER LINE - 141 LF
8" VALVE - 1 EACH
16" ENCASEMENT PIPE - 90 LF
TRENCHLESS INSTALLATION OF 16"
IN SOIL - 22 LF
TRENCHLESS INSTALLATION OF 16"
NOT IN SOIL - 23 LF

160 LF OF 8" GRAVITY SANITARY SEWER PIPE
4' DIA UTILITY MANHOLE - 2 EACH
UTILITY MANHOLE WALL, 4' DIA - 22.2 LF

SANITARY SEWER CLEAN OUT - 4 EACH
PARCELS: 54 THRU 57

SPECIAL PAY ITEM
RELOCATE WATER VAULT -
1 EACH
SEE NOTES THIS SHEET
AND SPECIAL PROVISIONS

NOTES:

- CONTRACTOR SHALL REMOVE EXISTING WATER VAULT AND APPURTENANCES. INSTALL NEW VAULT AS SHOWN OUTSIDE PROPOSED RIGHT OF WAY, EXTEND SERVICE LINE AND RECONNECT TO EXISTING CUSTOMER SERVICE LINE.
- CONTRACTOR SHALL LOCATE EXISTING CUSTOMER SERVICE LINE ON PARCEL 62 PRIOR TO STARTING WORK.
- CONTRACTOR SHALL COORDINATE WITH PARCEL 62 OWNER AND SCHEDULE WATER VAULT WORK TO MINIMIZE WATER SERVICE DISRUPTION DURING CHURCH MEETING SCHEDULE.
- CONTRACTOR SHALL RECONNECT SEWER SERVICE LINES AS NEEDED ON AFFECTED PARCELS.

THE KEMP
D. BATTLE
HOUSE

HISTORIC
PROPERTY

HISTORIC
PROPERTY
THE SHEARIN
HOUSE