

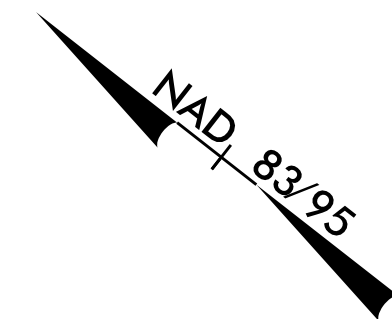
5/14/09

THE ESTIMATED QUANTITY OF DUCTILE IRON WATER PIPE FITTINGS ON THIS PLAN SHEET IS 3010 POUNDS. THE ACTUAL QUANTITY AND TYPE OF FITTINGS WILL VARY BASED ON FIELD CONDITIONS.

SEE SHEET UC-09 FOR WL-2 PROFILE.

UTILITY OWNERS ON THIS PROJECT:

CITY OF ROCKY MOUNT
WATER LINES: 16"
SANITARY SEWER:
CONTACT: DONALD M. PERRY, PE
PHONE: (252) 972-1122



PROJECT REFERENCE NO. U-3621A	SHEET NO. UC-06
DESIGNED BY: GJB	
DRAWN BY: GJB	
CHECKED BY: KCZ	
APPROVED BY: KCZ	
REVISED:	3/22/2011
NORTH CAROLINA DEPARTMENT OF TRANSPORTATION UTILITIES ENGINEERING SEC. PHONE: (919) 707-6690 FAX: (919) 250-4151 UTILITY CONSTRUCTION PLANS ONLY	

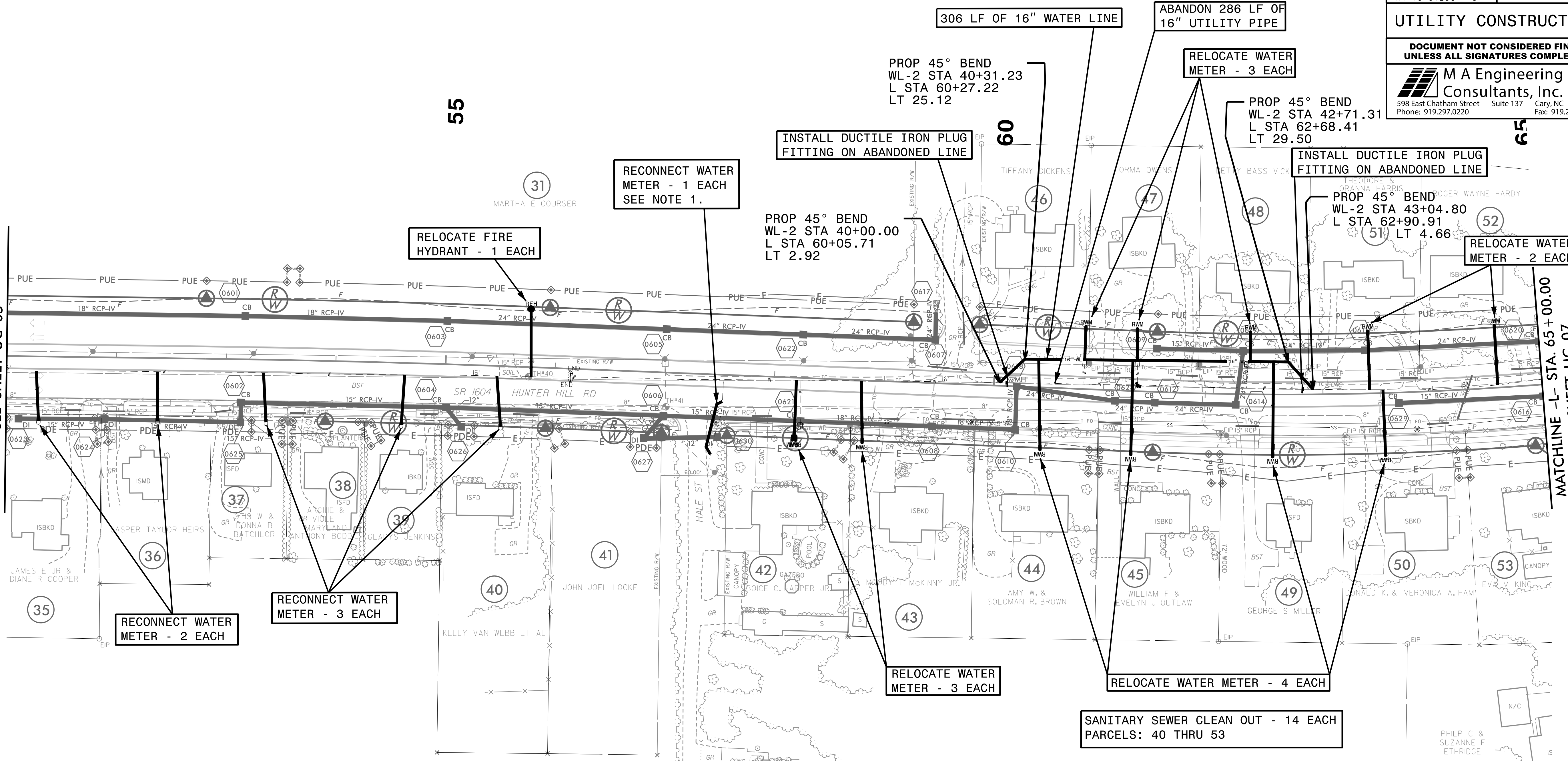
UTILITY CONSTRUCTION

DOCUMENT NOT CONSIDERED FINAL UNLESS ALL SIGNATURES COMPLETED

M A Engineering Consultants, Inc. NC License: F-0160
 598 East Chatham Street Suite 137 Cary, NC 27511
 Phone: 919.297.0220 Fax: 919.297.0221

MATCHLINE -L- STA. 51+00.00
SEE SHEET UC-05

MATCHLINE -L- STA. 65+00.00
SEE SHEET UC-07



- NOTES:
- ROCKY MOUNT RECORDS DO NOT SHOW A WATER MAIN HERE. THEREFORE, THIS MUST BE A WATER SERVICE LINE THAT CONNECTS TO A WATER METER THAT WAS NOT FIELD LOCATED. CONTRACTOR SHALL VERIFY AND RELOCATE/RECONNECT SERVICE LINE AS NEEDED TO CLEAR CONFLICT WITH PROPOSED DRAINAGE PIPES.
 - CONTRACTOR SHALL RECONNECT SEWER SERVICE LINES AS NEEDED ON AFFECTED PARCELS.

NICHOL