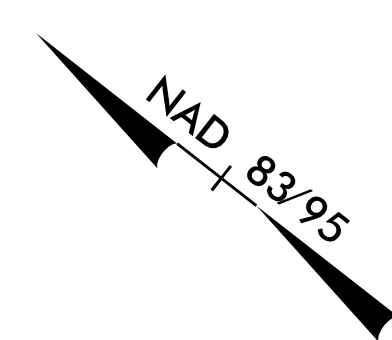


5/14/2019

THE ESTIMATED QUANTITY OF DUCTILE IRON WATER PIPE FITTINGS ON THIS PLAN SHEET IS 7400 POUNDS. THE ACTUAL QUANTITY AND TYPE OF FITTINGS WILL VARY BASED ON FIELD CONDITIONS.

SEE SHEET UC-09 FOR WL-1 PROFILE
SEE SHEET UC-10 FOR SL-2 PROFILE

UTILITY OWNERS ON THIS PROJECT:
CITY OF ROCKY MOUNT
WATER LINES: 8", 12", 16"
SANITARY SEWER: 24"
CONTACT: DONALD M. PERRY, PE
PHONE: (252) 972-1122



PROJECT REFERENCE NO.	SHEET NO.
U-3621A	UC-05
DESIGNED BY: GJB	
DRAWN BY: GJB	
CHECKED BY: KCZ	
APPROVED BY: KCZ	
REVISED:	
NORTH CAROLINA DEPARTMENT OF TRANSPORTATION	3/22/2019
UTILITIES ENGINEERING SEC. PHONE: (919) 707-6690 FAX: (919) 250-4151	UTILITY CONSTRUCTION PLANS ONLY

UTILITY CONSTRUCTION

DOCUMENT NOT CONSIDERED FINAL UNLESS ALL SIGNATURES COMPLETED

M A Engineering Consultants, Inc.
 NC License: F-0160
 598 East Chatham Street Suite 137 Cary, NC 27511
 Phone: 919.297.0220 Fax: 919.297.0221

ABANDON 16" UTILITY PIPE - 30 LF
16" WATER LINE - 35 LF
SEE NOTE 1 THIS SHEET.

ABANDON 42 LF OF 8" UTILITY PIPE
ABANDON UTILITY MANHOLE - 1 EACH
4' DIA UTILITY MANHOLE - 1 EACH

ABANDON 30 LF OF 8" UTILITY PIPE
34 LF OF 8" WATER LINE, SEE NOTE 1.

RELOCATE WATER METER - 2 EACH

REMOVE WATER METER - 4 EACH

8" VALVE - 1 EACH.
16" VALVE - 1 EACH.

PROP 45° BEND
WL-1 STA 20+49.98
L STA 40+69.33
LT 24.64

PROP 45° BEND
WL-1 STA 20+00.00
L STA 40+34.91
RT 11.08

RELOCATE WATER METER - 2 EACH

PROP 16x8 TEE
WL-1 STA 22.11.72
L STA 42+28.92 LT 27.38

ABANDON 33 LF OF 8" UTILITY PIPE

PROP 45° BEND
WL-1 STA 23+03.33
L STA 43+18.55
LT 35.12

INSTALL DUCTILE IRON PLUG FITTING ON ABANDONED LINE

PROP 45° BEND
WL-1 STA 23+51.44
L STA 43+51.57
LT 0.00

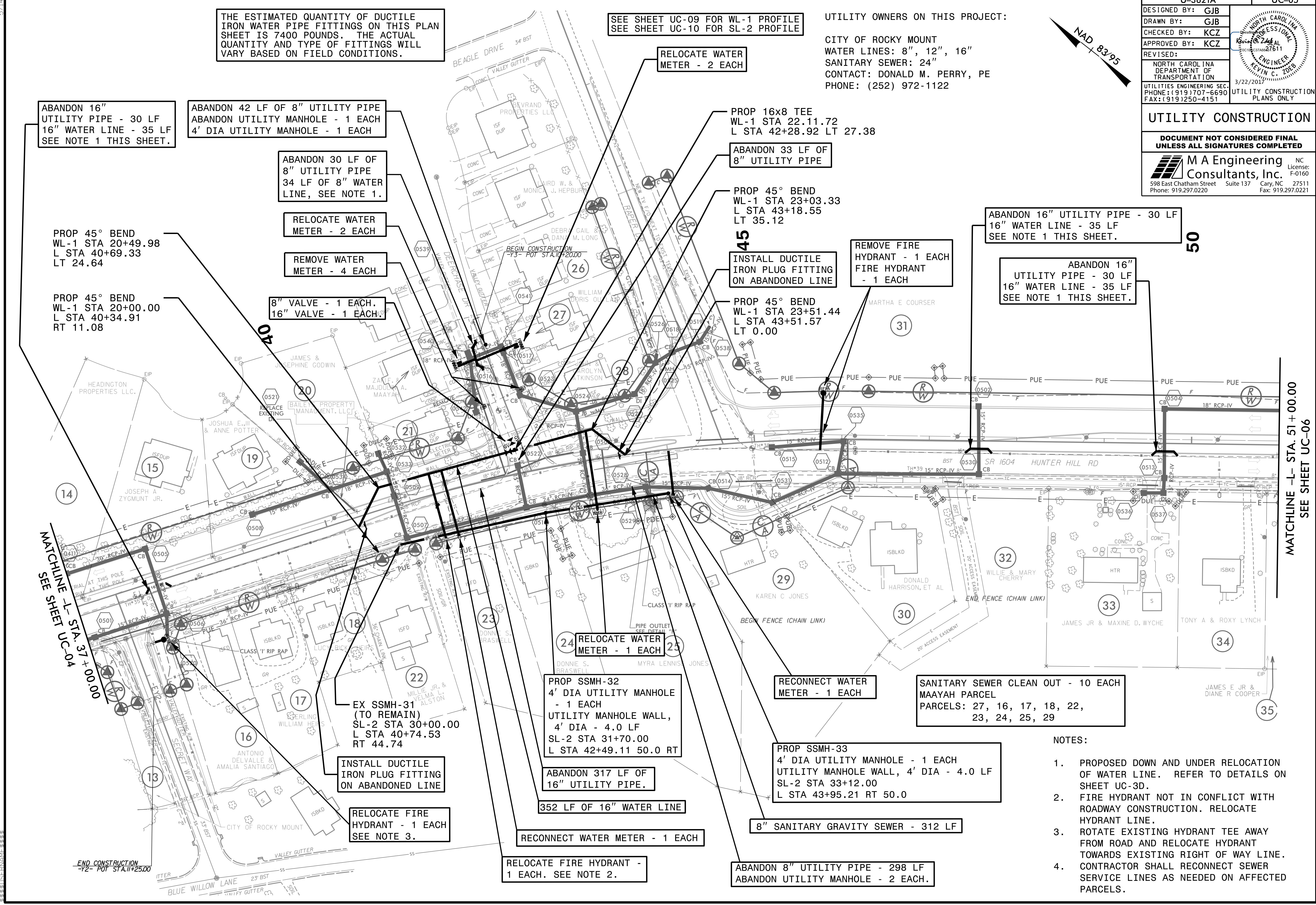
REMOVE FIRE HYDRANT - 1 EACH
FIRE HYDRANT - 1 EACH

ABANDON 16" UTILITY PIPE - 30 LF
16" WATER LINE - 35 LF
SEE NOTE 1 THIS SHEET.

ABANDON 16" UTILITY PIPE - 30 LF
16" WATER LINE - 35 LF
SEE NOTE 1 THIS SHEET.

SEE SHEET UC-04
MATCHLINE - L - STA. 37 + 00.00

MATCHLINE - L - STA. 51 + 00.00
SEE SHEET UC-06



RELOCATE WATER METER - 1 EACH

PROP SSMH-32
4' DIA UTILITY MANHOLE - 1 EACH
UTILITY MANHOLE WALL, 4' DIA - 4.0 LF
SL-2 STA 31+70.00
L STA 42+49.11 50.0 RT

ABANDON 317 LF OF 16" UTILITY PIPE.

352 LF OF 16" WATER LINE

RECONNECT WATER METER - 1 EACH

RELOCATE FIRE HYDRANT - 1 EACH. SEE NOTE 2.

RECONNECT WATER METER - 1 EACH

PROP SSMH-33
4' DIA UTILITY MANHOLE - 1 EACH
UTILITY MANHOLE WALL, 4' DIA - 4.0 LF
SL-2 STA 33+12.00
L STA 43+95.21 RT 50.0

8" SANITARY GRAVITY SEWER - 312 LF

ABANDON 8" UTILITY PIPE - 298 LF
ABANDON UTILITY MANHOLE - 2 EACH.

SANITARY SEWER CLEAN OUT - 10 EACH
MAAYAH PARCEL
PARCELS: 27, 16, 17, 18, 22, 23, 24, 25, 29

NOTES:

1. PROPOSED DOWN AND UNDER RELOCATION OF WATER LINE. REFER TO DETAILS ON SHEET UC-3D.
2. FIRE HYDRANT NOT IN CONFLICT WITH ROADWAY CONSTRUCTION. RELOCATE HYDRANT LINE.
3. ROTATE EXISTING HYDRANT TEE AWAY FROM ROAD AND RELOCATE HYDRANT TOWARDS EXISTING RIGHT OF WAY LINE.
4. CONTRACTOR SHALL RECONNECT SEWER SERVICE LINES AS NEEDED ON AFFECTED PARCELS.

END CONSTRUCTION
-72- POT STA. 11+25.00