

PROJECT REFERENCE NO.	SHEET NO.
U-3621A	EC-4/CONST.4
R/W SHEET NO.	4
ROADWAY DESIGN ENGINEER	HYDRAULICS ENGINEER

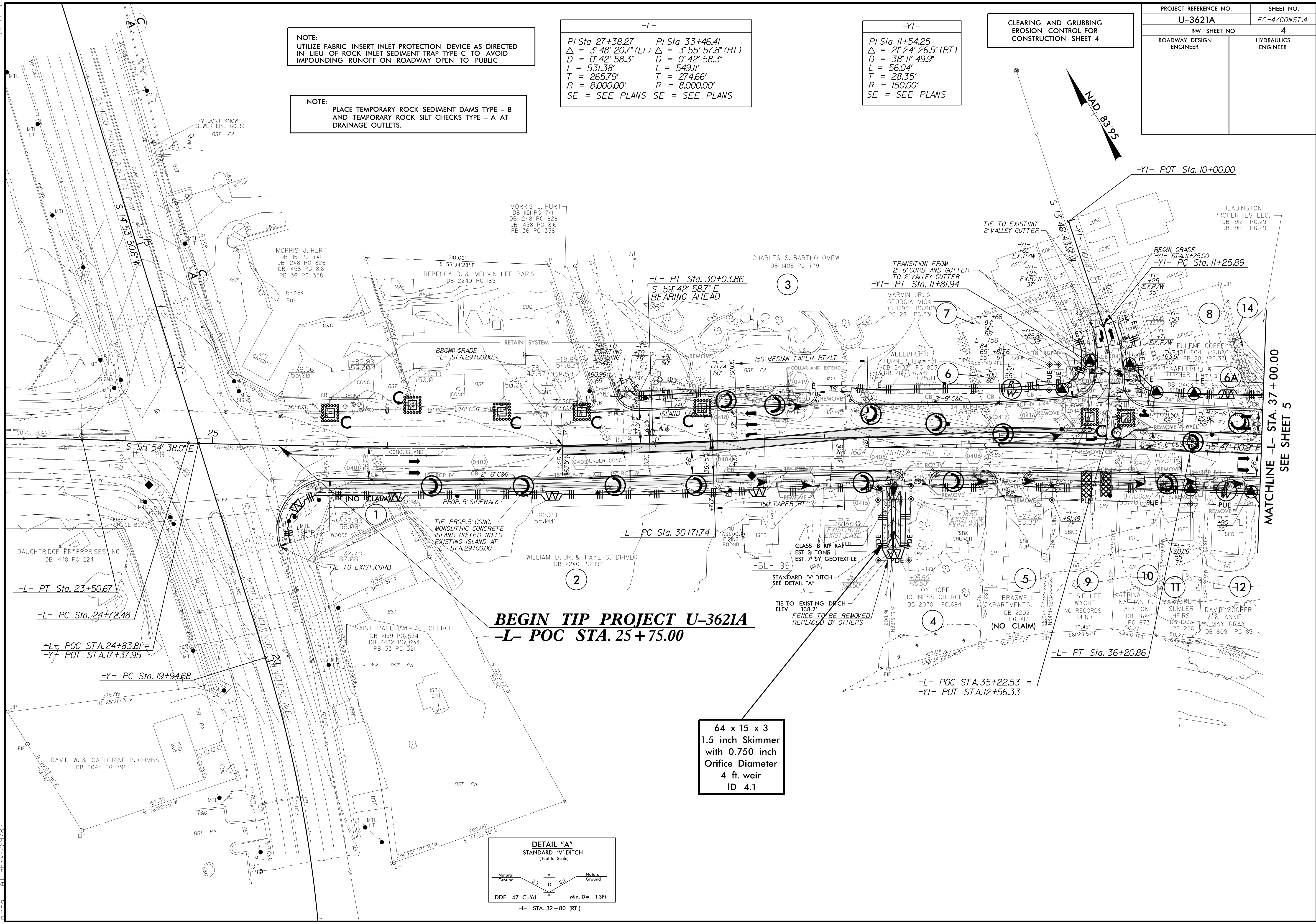
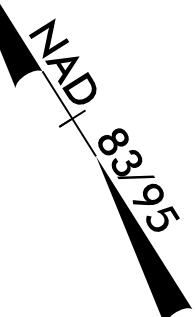
NOTE:  
UTILIZE FABRIC INSERT INLET PROTECTION DEVICE AS DIRECTED IN LIEU OF ROCK INLET SEDIMENT TRAP TYPE C TO AVOID IMPOUNDING RUNOFF ON ROADWAY OPEN TO PUBLIC

NOTE:  
PLACE TEMPORARY ROCK SEDIMENT DAMS TYPE - B AND TEMPORARY ROCK SILT CHECKS TYPE - A AT DRAINAGE OUTLETS.

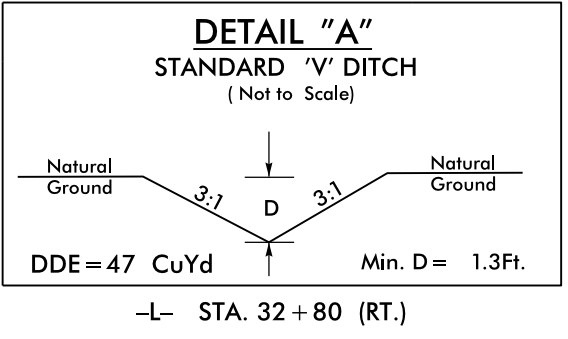
-L-  
PI Sta. 27+38.27    PI Sta. 33+46.41  
 $\Delta = 3^{\circ}48'20.7''$  (LT)     $\Delta = 3^{\circ}55'57.8''$  (RT)  
 $D = 0^{\circ}42'58.3''$      $D = 0^{\circ}42'58.3''$   
 $L = 531.38'$      $L = 549.11'$   
 $T = 265.79'$      $T = 274.66'$   
 $R = 8,000.00'$      $R = 8,000.00'$   
 SE = SEE PLANS    SE = SEE PLANS

-YI-  
PI Sta. 11+54.25  
 $\Delta = 21^{\circ}24'26.5''$  (RT)  
 $D = 38^{\circ}11'49.9''$   
 $L = 56.04'$   
 $T = 28.35'$   
 $R = 150.00'$   
 SE = SEE PLANS

CLEARING AND GRUBBING  
EROSION CONTROL FOR  
CONSTRUCTION SHEET 4



64 x 15 x 3  
1.5 inch Skimmer  
with 0.750 inch  
Orifice Diameter  
4 ft. weir  
ID 4.1



MATCHLINE -L- STA. 37+00.00  
SEE SHEET 5

8.17.7.99  
21-FEB-2017 10:52  
R:\E:\v\p\m\m\design\U-3621A-EC.psh\_4.dgn  
PLotted At: R:\E\p\m\m\plots\U-3621A-EC-4.dgn