

8.17.799

SEPI
ENGINEERING &
CONSTRUCTION

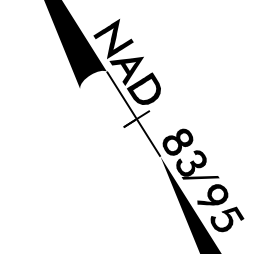
1025 Wade Avenue
Raleigh, NC 27605
Tel: 919-789-9977
Fax: 919-789-9591
License: C-2197

| | | | |
|--|--|-----------------------|--|
| PROJECT REFERENCE NO. U-3621A | | SHEET NO. 4 | |
| ROADWAY DESIGN ENGINEER | | HYDRAULICS ENGINEER | |
| | | | |
| <p>4/12/2017 W. GARDNER, JR. 4/10/2017 G. FREEMAN, JR.</p> <p>DOCUMENT NOT CONSIDERED FINAL UNLESS ALL SIGNATURES COMPLETED</p> | | | |

| | | | |
|---|---------|-------|--|
| -L- SR 1604 HUNTER HILL ROAD AT -Y- SR 1613 WINSTEAD AVENUE AND SR 1600 THOMAS A. BETTS PKW | | | |
| 2017 ADT | 12015 | 17555 | |
| 2040 ADT | 18500 | 27000 | |
| | 2150 | 3715 | |
| | 3300 | 5600 | |
| 10180 | SR 1604 | 9625 | |
| 15600 | 3815 | 14800 | |
| | 5700 | 19590 | |
| | | 30100 | |

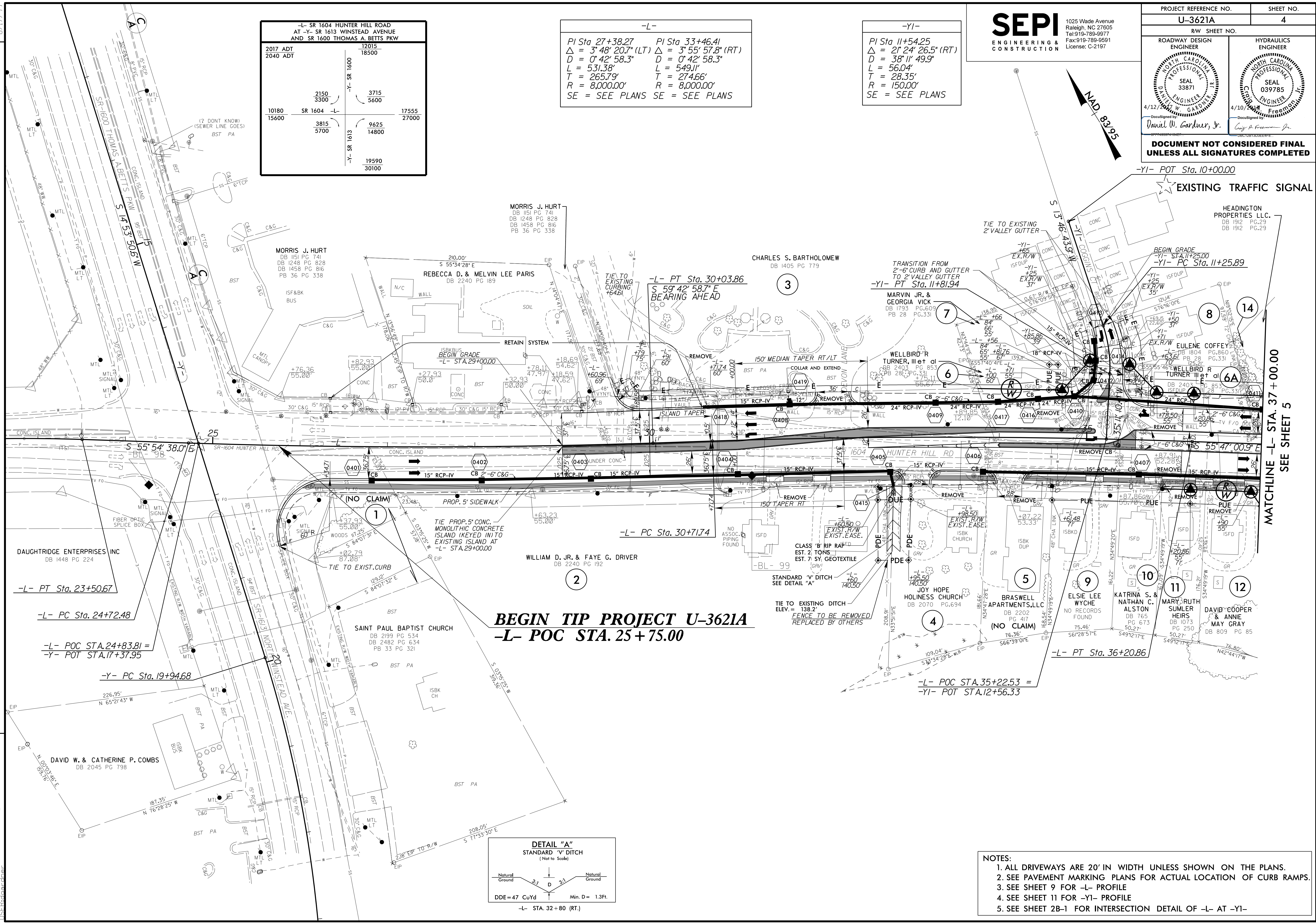
-L-
 PI Sta. 27+38.27 PI Sta. 33+46.41
 $\Delta = 3^{\circ}48'20.7"$ (LT) $\Delta = 3^{\circ}55'57.8"$ (RT)
 $D = 0^{\circ}42'58.3"$ $D = 0^{\circ}42'58.3"$
 $L = 531.38'$ $L = 549.11'$
 $T = 265.79'$ $T = 274.66'$
 $R = 8,000.00'$ $R = 8,000.00'$
 SE = SEE PLANS SE = SEE PLANS

-YI-
 PI Sta. 11+54.25
 $\Delta = 21^{\circ}24'26.5"$ (RT)
 $D = 38^{\circ}11'49.9"$
 $L = 56.04'$
 $T = 28.35'$
 $R = 150.00'$
 SE = SEE PLANS

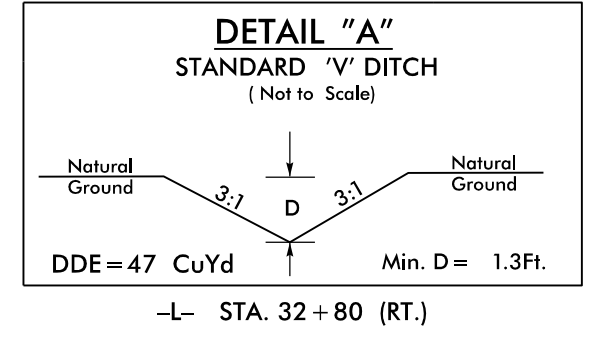


REVISIONS

MATCHLINE -L- STA. 37+00.00
SEE SHEET 5



BEGIN TIP PROJECT U-3621A
-L- POC STA. 25+75.00



- NOTES:
1. ALL DRIVEWAYS ARE 20' IN WIDTH UNLESS SHOWN ON THE PLANS.
 2. SEE PAVEMENT MARKING PLANS FOR ACTUAL LOCATION OF CURB RAMPS.
 3. SEE SHEET 9 FOR -L- PROFILE
 4. SEE SHEET 11 FOR -YI- PROFILE
 5. SEE SHEET 2B-1 FOR INTERSECTION DETAIL OF -L- AT -YI-

2/28/2017 U-3621A_Rdu_psh_4.dgn
11:58:40 AM