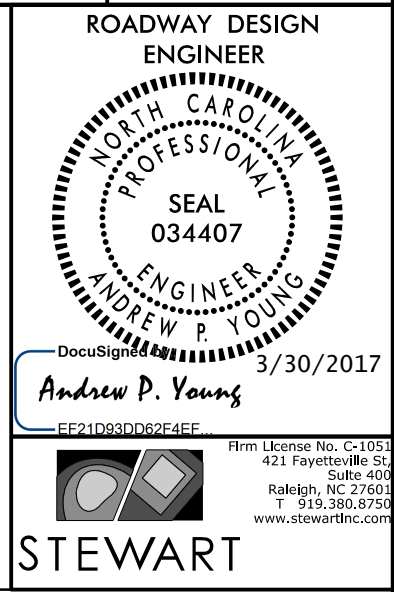


STATE OF NORTH CAROLINA  
DIVISION OF HIGHWAYS

**INDEX OF SHEETS, GENERAL NOTES, AND LIST OF  
STANDARD DRAWINGS**

PROJECT REFERENCE NO. B-5159	SHEET NO. 1A
---------------------------------	-----------------



**DOCUMENT NOT CONSIDERED FINAL  
UNLESS ALL SIGNATURES COMPLETED**

SHEET NUMBER	SHEET	TITLE
1	TITLE SHEET	2012 ROADWAY ENGLISH STANDARD DRAWINGS
1A	INDEX OF SHEETS, GENERAL NOTES, AND LIST OF STANDARD DRAWINGS	The following Roadway Standards as appear in "Roadway Standard Drawings" Highway Design Branch - N. C. Department of Transportation - Raleigh, N. C., Dated January, 2012 are applicable to this project and by reference hereby are considered a part of these plans:
1B	CONVENTIONAL SYMBOLS	
1C-1	SURVEY CONTROL DATA SHEET	
2A-1 THRU 2A-2	PAVEMENT SCHEDULE, TYPICAL SECTIONS, AND WEDGING DETAILS	
2C-1	GUARDRAIL ANCHOR UNIT, TYPE III SHOP CURVED DETAIL	
2C-2	GUARDRAIL ANCHOR UNIT DETAIL	
3B-1	ROADWAY SUMMARIES	
3D-1	DRAINAGE SUMMARY	
3G-1	GEOTECHNICAL SUMMARY	
4	PLAN SHEET	
5 THRU 6	PROFILE SHEET	
TMP-1 THRU TMP-8	TRAFFIC CONTROL PLANS	
EC-1 THRU EC-5	EROSION CONTROL PLANS	
RF-1	REFORESTATION PLAN	
SIGN-1 THRU SIGN-2	SIGNING PLANS	
PMP-1	PAVEMENT MARKING PLAN	
UO-1 THRU UO-2	UTILITY BY OTHERS PLANS	
X-1	CROSS-SECTION SUMMARY SHEET	
X-2 THRU X-32	CROSS-SECTIONS	
S-1 THRU S-17	STRUCTURE PLANS	

EFF. 01-17-2012  
REV. 02-29-2016

GENERAL NOTES: 2012 SPECIFICATIONS  
EFFECTIVE: 01-17-2012  
REVISED: 10-31-2014

GRADE LINE:  
GRADING AND SURFACING:  
  
THE GRADE LINES SHOWN DENOTE THE FINISHED ELEVATION OF THE PROPOSED SURFACING AT GRADE POINTS SHOWN ON THE TYPICAL SECTIONS. GRADE LINES MAY BE ADJUSTED AT THEIR BEGINNING AND ENDING AND AT STRUCTURES AS DIRECTED BY THE ENGINEER IN ORDER TO SECURE A PROPER TIE-IN.

CLEARING:  
  
CLEARING ON THIS PROJECT SHALL BE PERFORMED TO THE LIMITS ESTABLISHED BY METHOD II.

SUPERELEVATION:  
  
ALL CURVES ON THIS PROJECT SHALL BE SUPERELEVATED IN ACCORDANCE WITH STD. NO. 225.04 USING THE RATE OF SUPERELEVATION AND RUNOFF SHOWN ON THE PLANS. SUPERELEVATION IS TO BE REVOLVED ABOUT THE GRADE POINTS SHOWN ON THE TYPICAL SECTIONS.

SHOULDER CONSTRUCTION:  
  
ASPHALT, EARTH, AND CONCRETE SHOULDER CONSTRUCTION ON THE HIGH SIDE OF SUPERELEVATED CURVES SHALL BE IN ACCORDANCE WITH STD. NO. 560.01

SIDE ROADS:  
  
THE CONTRACTOR WILL BE REQUIRED TO DO ALL NECESSARY WORK TO PROVIDE SUITABLE CONNECTIONS WITH ALL ROADS, STREETS, AND DRIVES ENTERING THIS PROJECT. THIS WORK WILL BE PAID FOR AT THE CONTRACT UNIT PRICE FOR THE PARTICULAR ITEMS INVOLVED.

SUBSURFACE DRAINS:  
  
SUBSURFACE DRAINS SHALL BE CONSTRUCTED IN ACCORDANCE WITH STD. NO. 815.02 AT LOCATIONS DIRECTED BY THE ENGINEER.

GUARDRAIL:  
  
THE GUARDRAIL LOCATIONS SHOWN ON THE PLANS MAY BE ADJUSTED DURING CONSTRUCTION AS DIRECTED BY THE ENGINEER. THE CONTRACTOR SHOULD CONSULT WITH THE ENGINEER PRIOR TO ORDERING GUARDRAIL MATERIAL.

TEMPORARY SHORING:  
  
SHORING REQUIRED FOR THE MAINTENANCE OF TRAFFIC WILL BE PAID FOR AS "EXTRA WORK" IN ACCORDANCE WITH SECTION 104-7.

SUBSURFACE PLANS:  
  
NO SUBSURFACE PLANS ARE AVAILABLE ON THIS PROJECT. THE CONTRACTOR SHOULD MAKE HIS OWN INVESTIGATION AS TO THE SUBSURFACE CONDITIONS.

END BENTS:  
  
THE ENGINEER SHALL CHECK THE STRUCTURE END BENT PLANS, DETAILS, AND CROSS-SECTION PRIOR TO SETTING OF THE SLOPE STAKES FOR THE EMBANKMENT OR EXCAVATION APPROACHING A BRIDGE.

UTILITIES:  
  
UTILITY OWNERS ON THIS PROJECT ARE  
  
HAYWOOD EMC  
  
FRONTIER COMMUNICATION  
  
ANY RELOCATION OF EXISTING UTILITIES WILL BE ACCOMPLISHED BY OTHERS.

RIGHT-OF-WAY MARKERS:  
  
ALL RIGHT-OF-WAY MARKERS ON THIS PROJECT SHALL BE PLACED BY OTHERS.

3/30/2017 11:58:00 AM B-5159\_Rdy\_psh\_01A.dgn