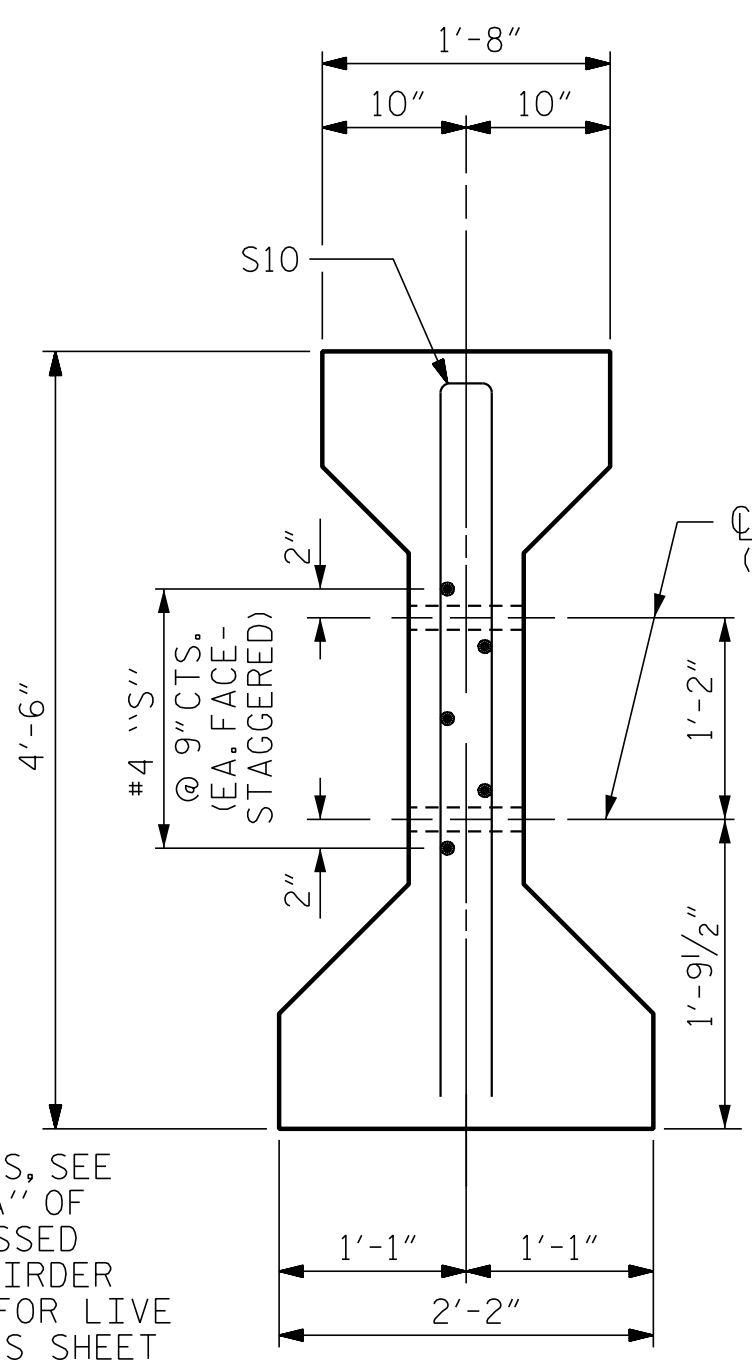


SECTION A-A

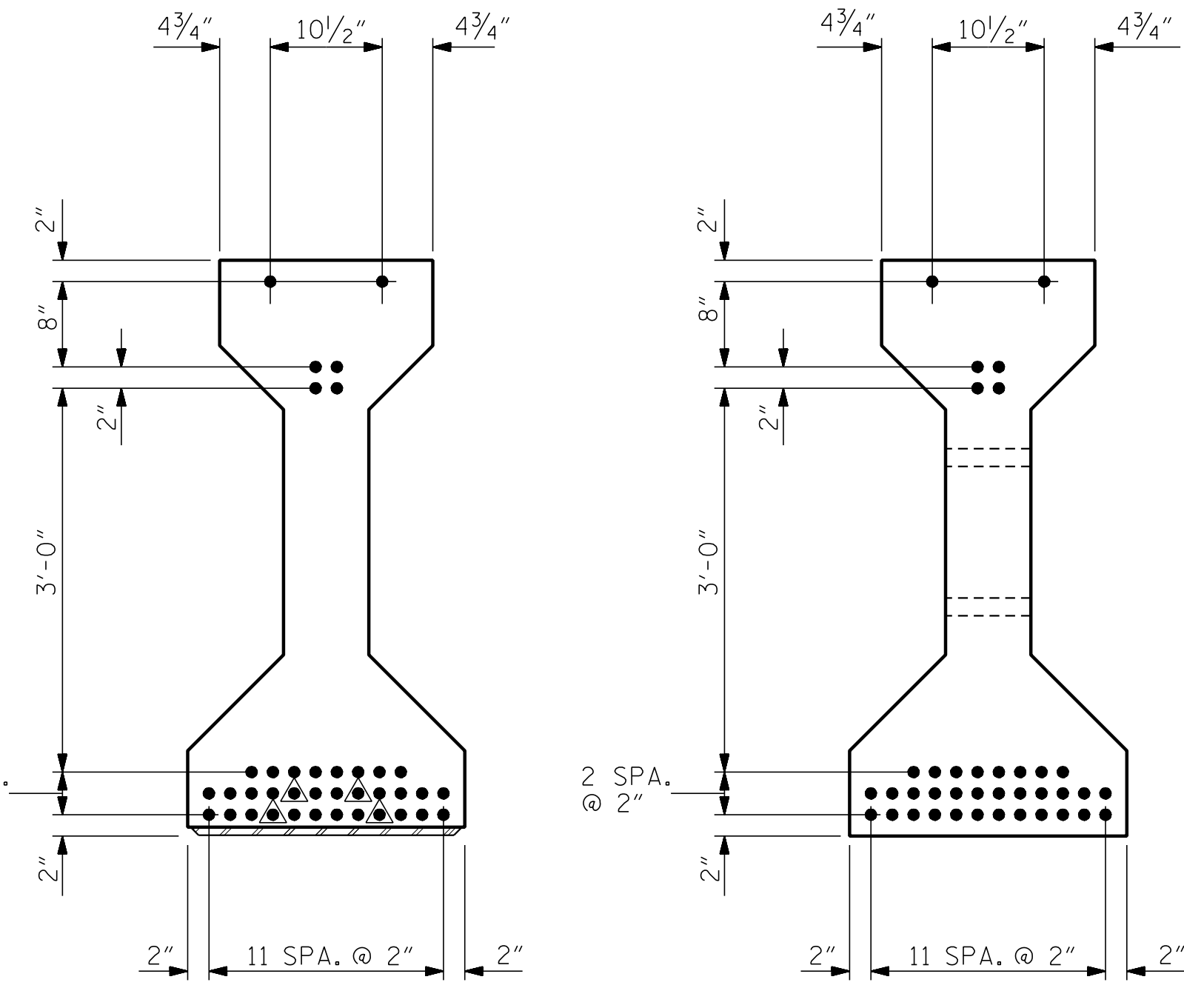
SECTION B-B



SECTION C-C
(S1 BARS NOT SHOWN)

*FOR S7 BARS, SEE
DETAIL "A" OF
PRESTRESSED
CONCRETE GIRDER
CONTINUOUS FOR LIVE
LOAD DETAILS SHEET

1/2" Ø FORMED HOLE
(SEE GIRDER LAYOUT
FOR LOCATION)



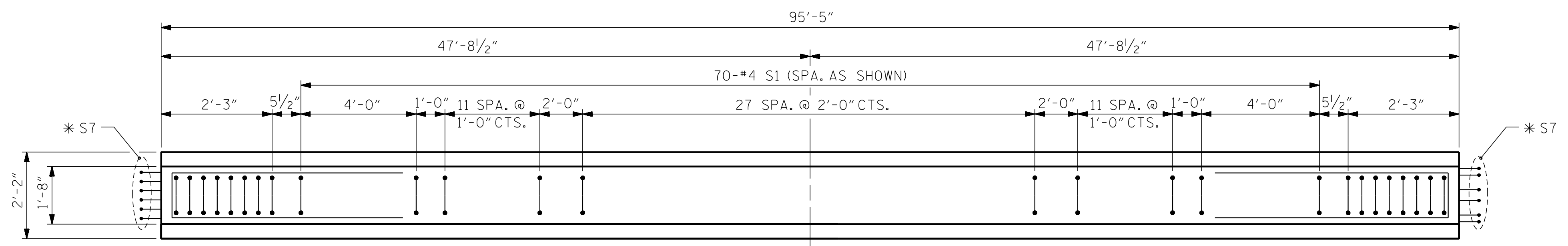
AT END OF GIRDER

AT C OF GIRDER

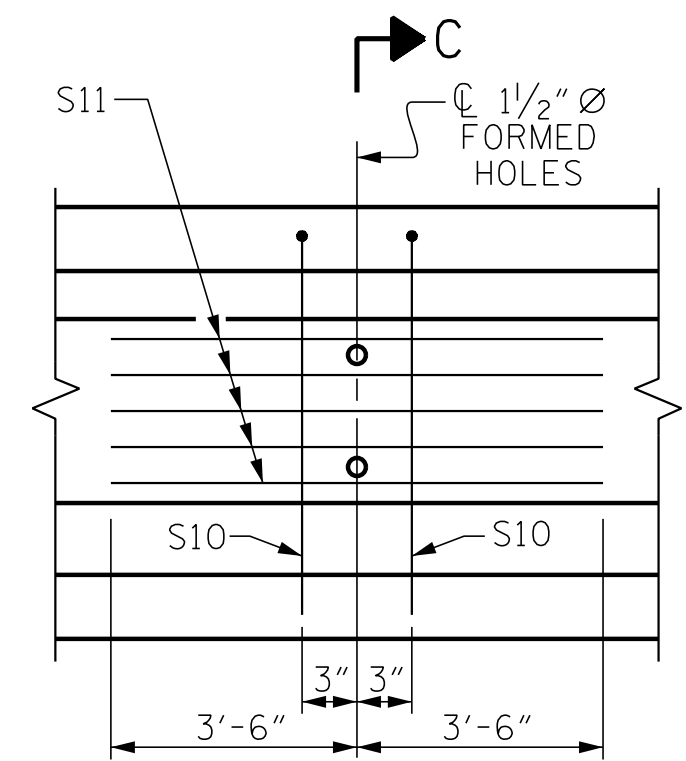
0.6" Ø LOW RELAXATION STRAND LAYOUT

DEBONDING LEGEND

▲ DEBOND STRANDS 10'-0"

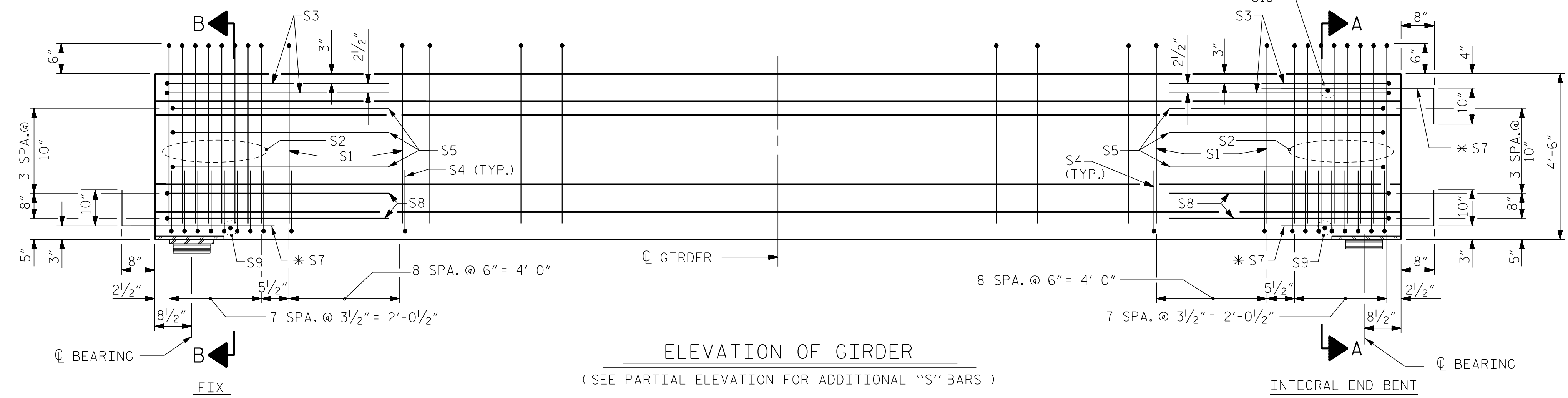


PLAN OF GIRDER



PARTIAL ELEVATION

SHOWING INTERMEDIATE DIAPHRAGM
REINFORCING STEEL FOR GIRDER Nos. 1 THRU 6



ELEVATION OF GIRDER

(SEE PARTIAL ELEVATION FOR ADDITIONAL "S" BARS)

INTEGRAL END BENT

0.6" Ø L. R. GRADE 270 STRANDS

AREA (SQUARE INCHES)	ULTIMATE STRENGTH (LBS. PER STRAND)	APPLIED PRESTRESS (LBS. PER STRAND)
0.217	58,600	43,950

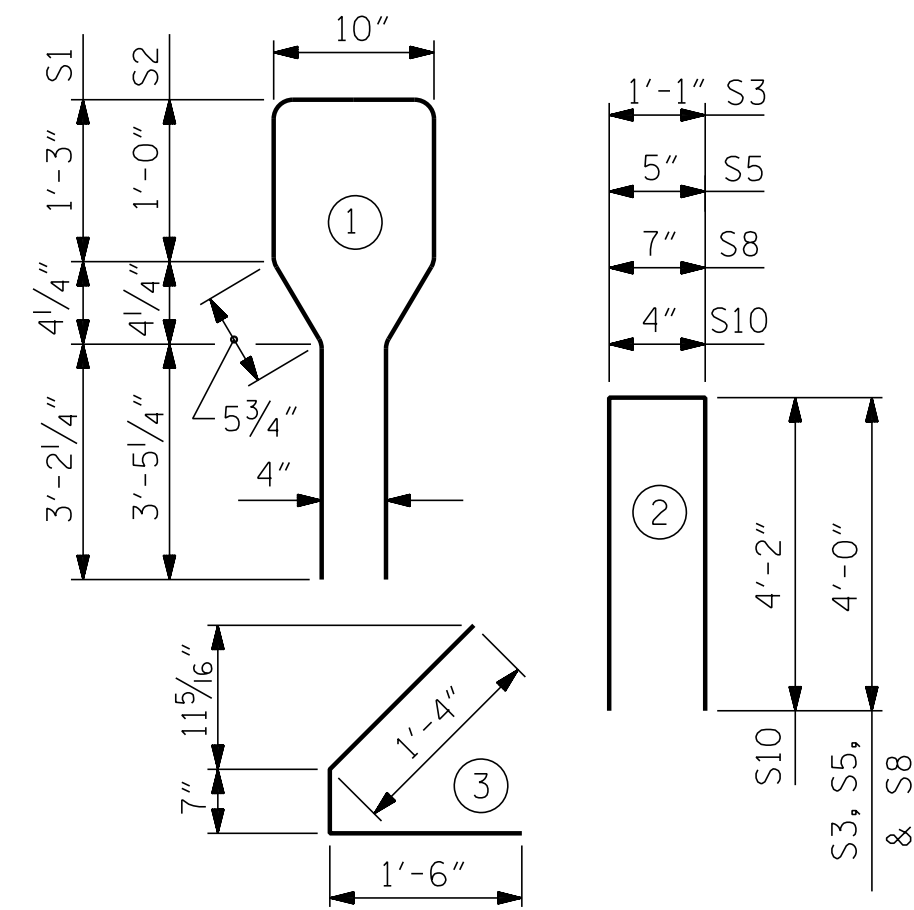
REINFORCING STEEL FOR ONE GIRDER

BAR	NUMBER	SIZE	TYPE	LENGTH	WEIGHT
S1	70	#4	1	10'-8"	499
S2	16	#6	1	10'-8"	256
S3	4	#4	2	9'-1"	24
S4	68	#4	3	3'-5"	155
S5	6	#4	2	8'-5"	34
*S7	18	#5	STR	3'-8"	69
S8	4	#4	2	8'-7"	23
S9	2	#3	STR	1'-10"	1
S10	2	#5	2	8'-8"	18
S11	5	#4	STR	7'-0"	23
S13	1	#3	STR	1'-4"	1

* NOTE: S7 BARS SHALL BE BENT BEFORE SHIPMENT. HEAT BENDING SHALL NOT BE ALLOWED.

BAR TYPES

ALL BAR DIMENSIONS ARE OUT-TO-OUT



QUANTITIES FOR ONE GIRDER

	REINFORCING STEEL	7500 PSI CONCRETE	0.6" Ø L. R. STRANDS
	LB.	C.Y.	No.
	1,103	19.4	38

GIRDERS REQUIRED

NUMBER	LENGTH	TOTAL LENGTH
6	95'-5"	572'-6"

PROJECT NO. R-5311A

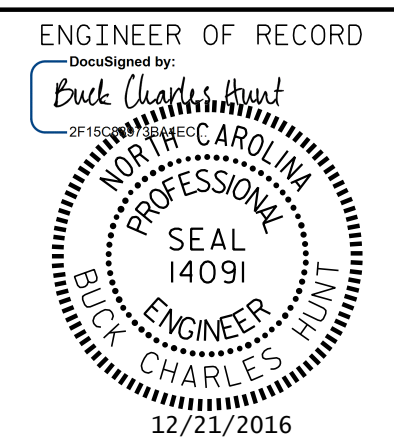
HERTFORD COUNTY

STATION: 50+99.00 -Y2-

SHEET 2 OF 4

STATE OF NORTH CAROLINA
DEPARTMENT OF TRANSPORTATION
RALEIGH

AASHTO TYPE IV
PRESTRESSED CONCRETE GIRDER
CONTINUOUS FOR LIVE LOAD
SPAN B



1223 Jones Franklin Rd.
Raleigh, N.C. 27606
Bus: 919 851 8077
Fax: 919 851 8107
LICENSE NO. F-0377

REVISIONS						SHEET NO.	
NO.	BY:	DATE:	NO.	BY:	DATE:	S02-12	
1			3			TOTAL SHEETS	
2			4			61	

DOCUMENT NOT CONSIDERED FINAL
UNLESS ALL SIGNATURES COMPLETED

P:\2015\A-5311A\Structures\Str 2 -Y2-DGN\A-5311A_STR_Y2_PCC.dgn
12/20/2016 2:37:04 PM

DRAWN BY: D. HODGE DATE: 3/16
CHECKED BY: G.M. GILLAND DATE: 3/16