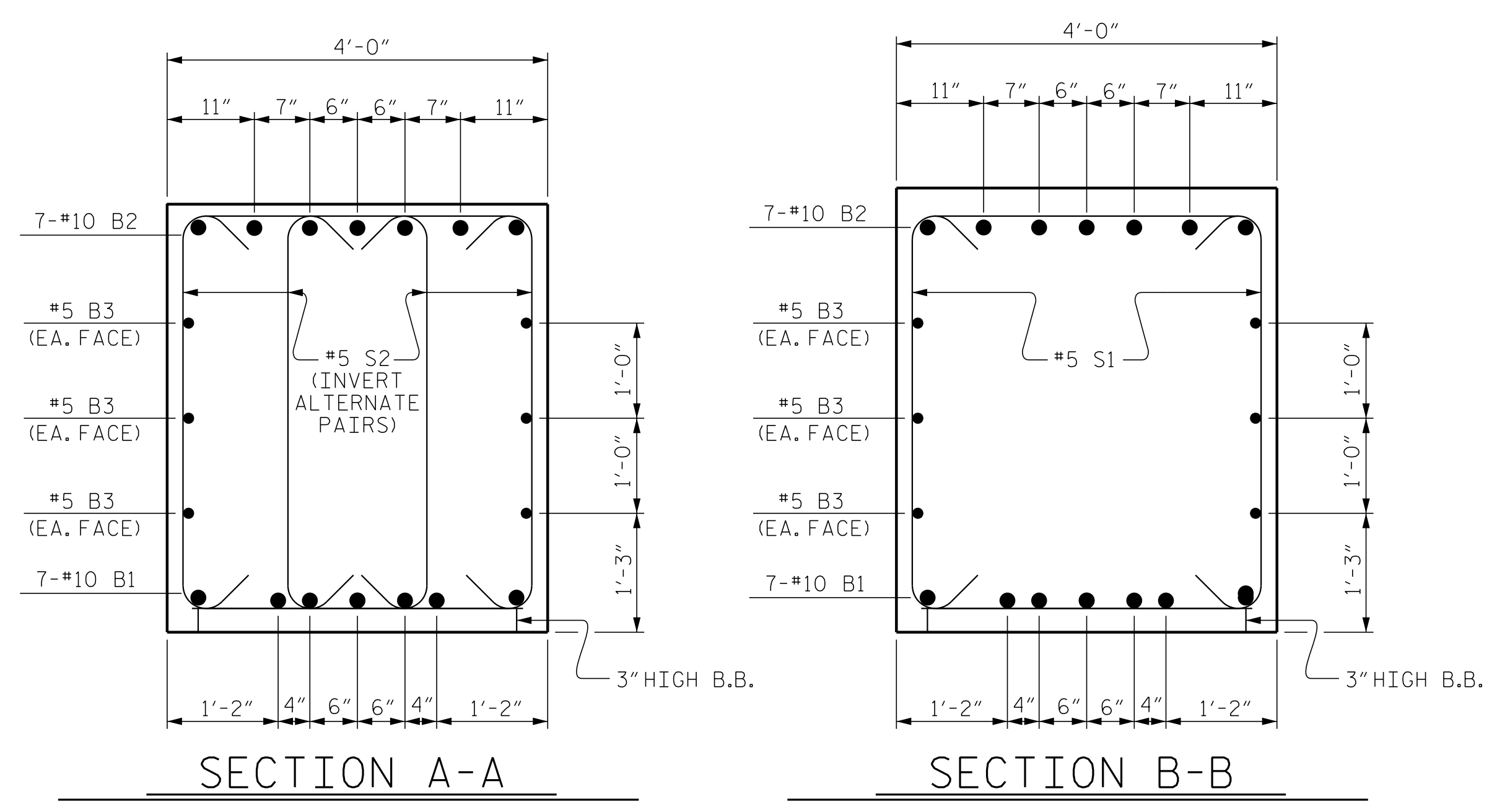
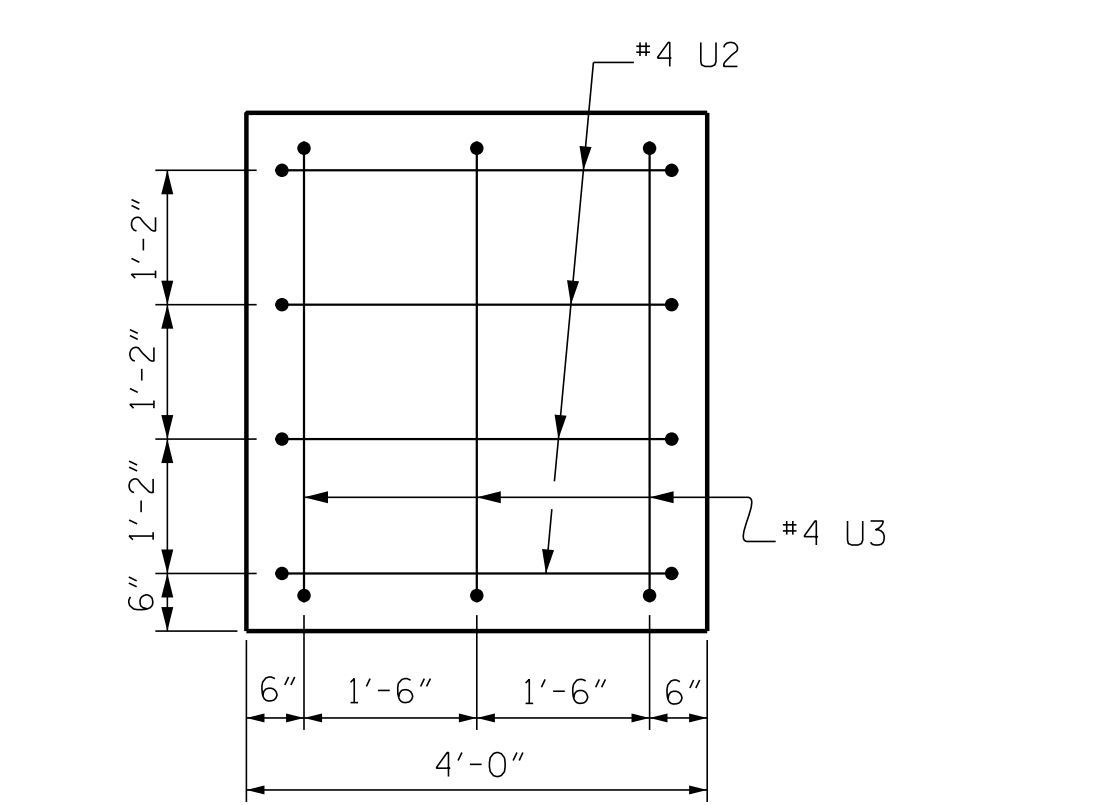
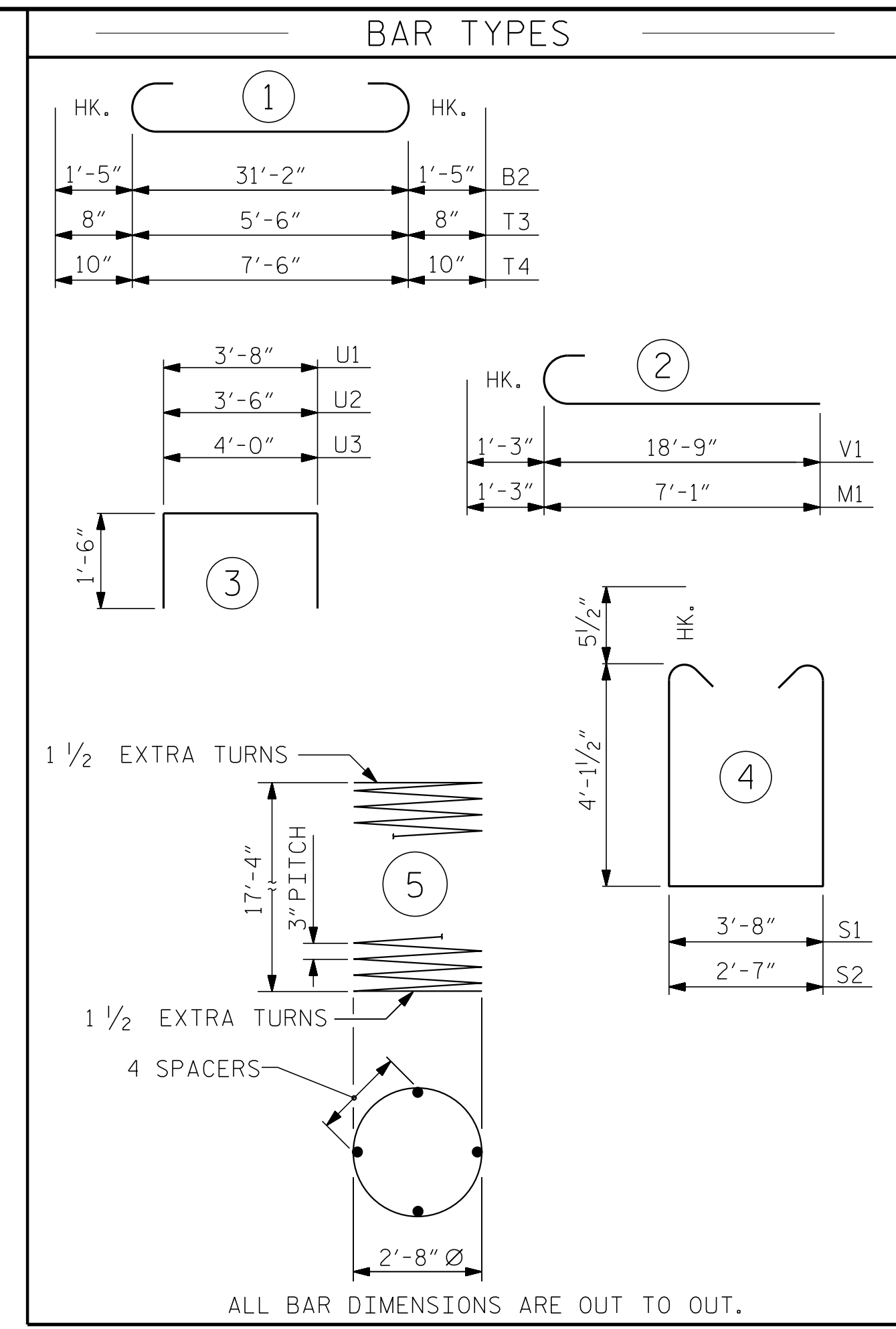


POSITION OF PILE DURING WELDING.
PILE SPLICE DETAILS

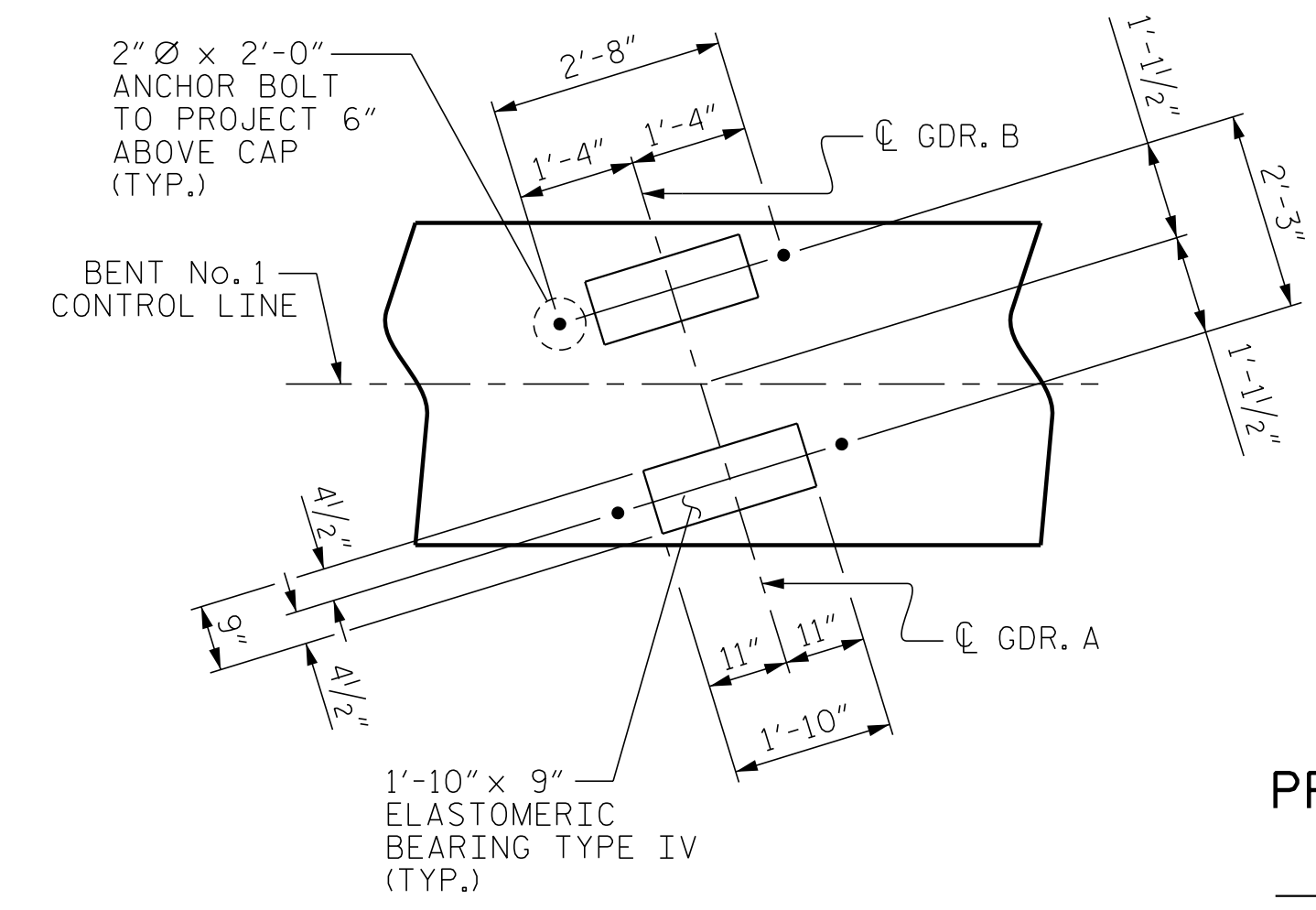


NOTES:
STIRRUPS IN CAP MAY BE SHIFTED AS NECESSARY TO CLEAR ANCHOR BOLTS.
HOOKS ON "V" BARS MAY BE TURNED AS NECESSARY FOR PLACING REINFORCING STEEL.

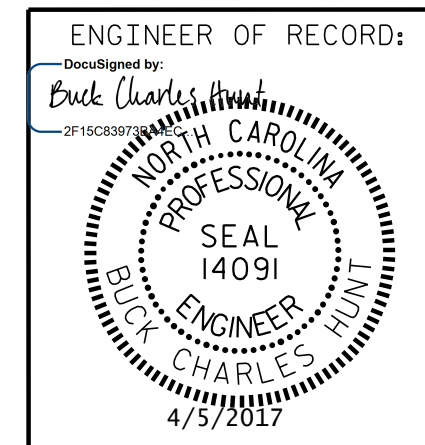
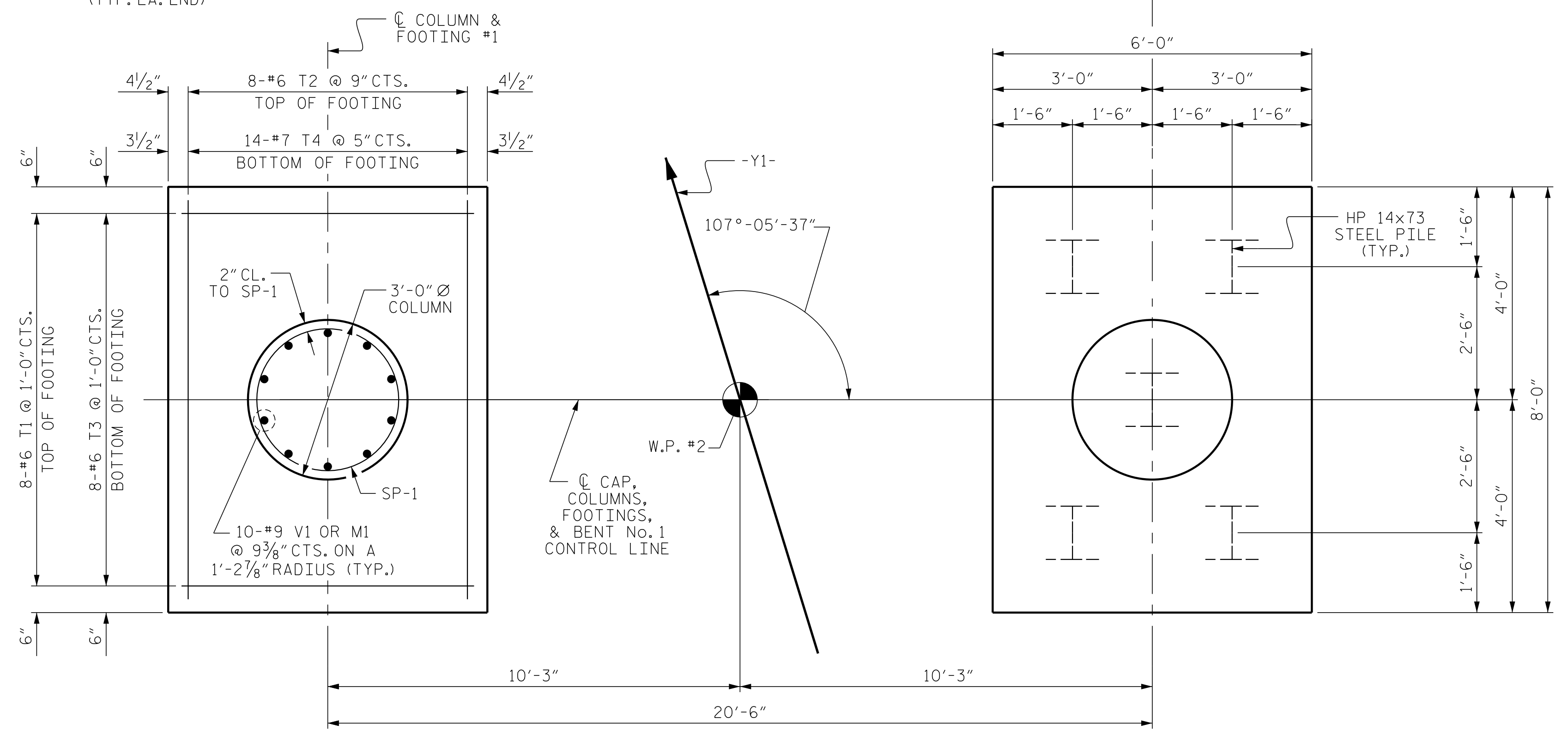


BILL OF MATERIAL					
BENT No. 1					
BAR	NO.	SIZE	TYPE	LENGTH	WEIGHT
B1	7	#10	STR	31'-4"	944
B2	7	#10	1	34'-0"	1024
B3	6	#5	STR	31'-4"	196
M1	20	#9	2	8'-4"	567
S1	7	#5	4	12'-10"	94
S2	76	#5	4	11'-9"	931
T1	16	#6	STR	5'-6"	132
T2	16	#6	STR	7'-6"	180
T3	16	#6	1	6'-10"	164
T4	28	#7	1	9'-2"	525
U1	32	#4	3	6'-8"	143
U2	8	#4	3	6'-6"	35
U3	6	#4	3	7'-0"	28
V1	20	#9	2	20'-0"	1360
REINFORCING STEEL					6,323 LBS.
SP-1	2	**	5	598'-2"	799
SPIRAL COLUMN REINFORCING STEEL					799 LBS.
CLASS A CONCRETE BREAKDOWN					
POUR #1 FOOTINGS					12.4 C.Y.
POUR #2 COLUMNS					8.9 C.Y.
POUR #3 CAP					21.5 C.Y.
TOTAL CLASS A CONCRETE					42.8 C.Y.
HP 14 X 73 STEEL PILES					
NO: 10					LIN. FT. = 708
PILE REDRIVES					5 EA.
FOUNDATION EXCAVATION					LUMP SUM
PILE DRIVING EQUIPMENT SET UP FOR HP 14 X 73 STEEL PILES					10 EA.

* THE SP-1 SPIRAL REINFORCING STEEL SHALL BE W20 OR D-20 COLD DRAWN WIRE OR #4 PLAIN OR DEFORMED BAR.



PROJECT NO. R-5311A
HERTFORD COUNTY
STATION: 25+47.22 -Y1-
SHEET 2 OF 2



ENGINEER OF RECORD:
Chad Charles Hetherill
NORTH CAROLINA PROFESSIONAL ENGINEER
SEAL 14091
BUCK CHARLES HETHERILL
4/5/2017

STATE OF NORTH CAROLINA
DEPARTMENT OF TRANSPORTATION
RALEIGH

SUBSTRUCTURE
BENT No. 1

REVISIONS					
NO.	BY:	DATE:	NO.	BY:	DATE:
1			3		
2			4		

SHEET NO. S01-23				
TOTAL SHEETS 61				

DOCUMENT NOT CONSIDERED FINAL UNLESS ALL SIGNATURES COMPLETED

P:\2015\A-5311A\Structures\Str 1 -Y1-DGN\A-5311A_STR_Y1_BT.dgn 4/5/2017 11:37:44 AM

DRAWN BY: D. HODGE DATE: 7/16
CHECKED BY: G. GILLAND DATE: 7/16