

NOTES

ALL PRESTRESSING STRANDS SHALL BE 7-WIRE LOW-RELAXATION GRADE 270 STRANDS AND SHALL CONFORM TO AASHTO M203 EXCEPT FOR SAMPLING REQUIREMENTS WHICH SHALL BE IN ACCORDANCE WITH THE STANDARD SPECIFICATIONS.

ALL REINFORCING STEEL SHALL BE GRADE 60.

APPLY EPOXY PROTECTIVE COATING TO END OF GIRDER SURFACES INDICATED IN ELEVATION VIEW.

EMBEDDED PLATE "B-1" SHALL BE GALVANIZED IN ACCORDANCE WITH THE STANDARD SPECIFICATIONS.

ANCHOR STUDS SHALL CONFORM TO AASHTO M169 GRADES 1010 THROUGH 1020 OR APPROVED EQUAL, AND SHALL MEET THE TYPE "B" REQUIREMENTS OF SUBSECTION 7.3 OF THE ANSI/AASHTO/AWS D1.5 BRIDGE WELDING CODE.

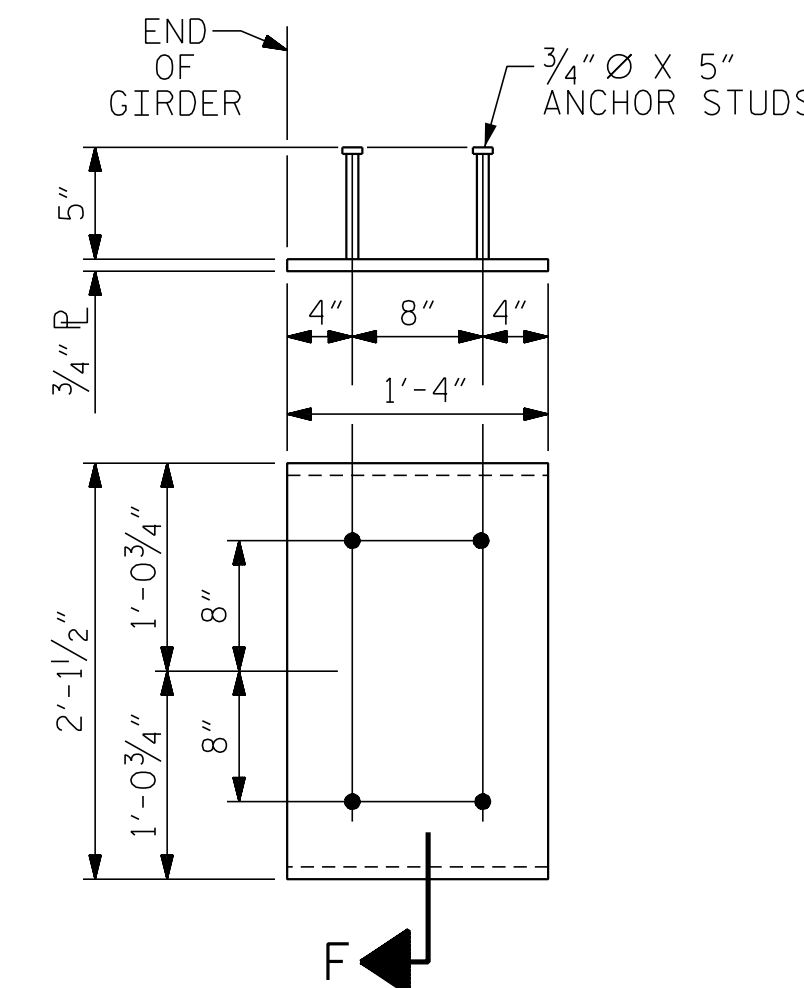
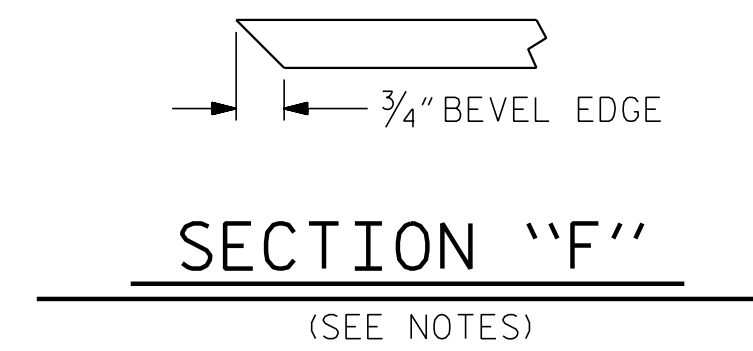
AT ENDS OF GIRDERS TO BE EMBEDDED IN CONCRETE DIAPHRAGMS OR END WALLS, PRESTRESSING STRANDS MAY EXTEND A MAXIMUM OF 2" BEYOND THE GIRDER ENDS. OTHERWISE, PRESTRESSING STRANDS SHALL BE CUT FLUSH WITH THE GIRDER ENDS.

THE TRANSFER OF LOAD FROM THE ANCHORAGES TO THE GIRDER SHALL BE DONE WHEN CONCRETE HAS REACHED A COMPRESSIVE STRENGTH OF NOT LESS THAN 6000 PSI.

DEPENDING ON THE TYPE OF SYSTEM USED TO SUPPORT THE DECK SLAB FORMS, PRESET ANCHORS MAY BE NECESSARY IN THE PRESTRESSED CONCRETE GIRDER.

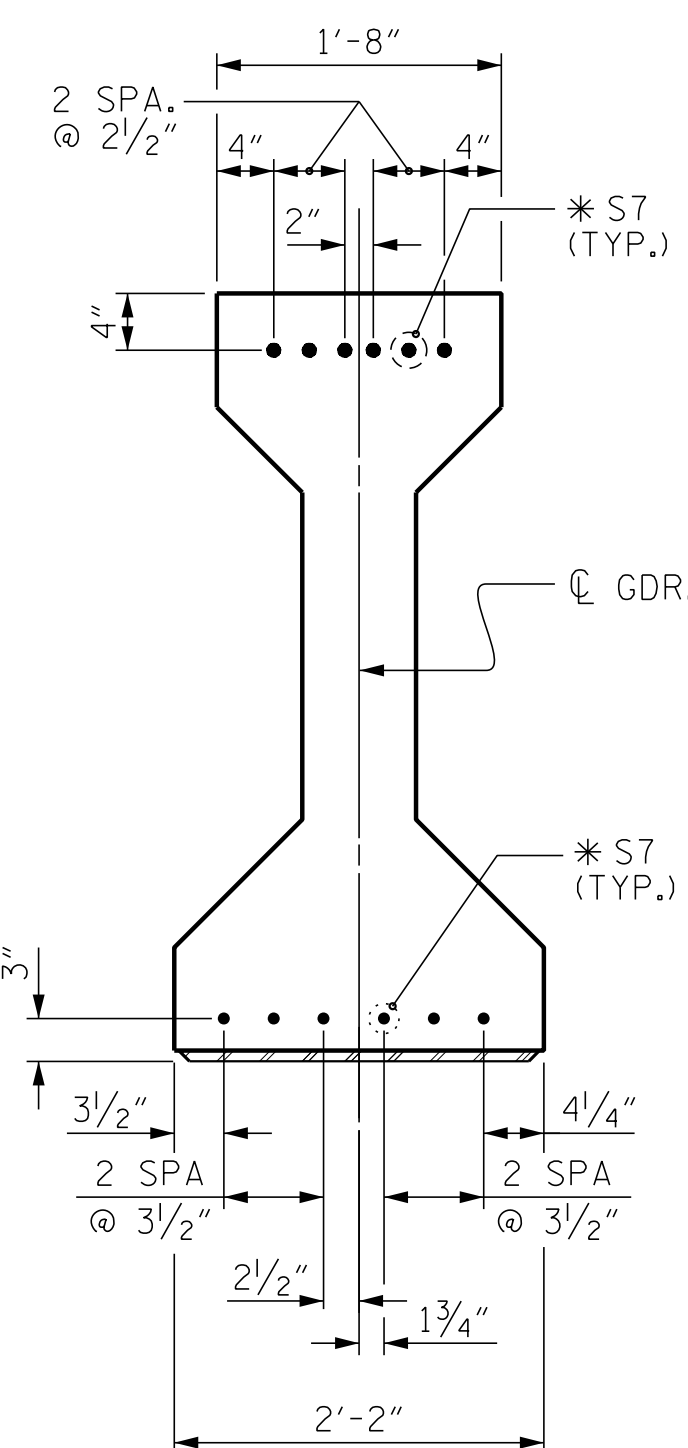
THE TOP SURFACE OF THE GIRDER, EXCLUDING THE OUTSIDE 4", SHALL BE RAKED TO A DEPTH OF 1/4".

FOR EMBEDDED CLIPS FOR PRESTRESSED CONCRETE GIRDERS, SEE SPECIAL PROVISIONS.



EMBEDDED PLATE "B-1" DETAILS FOR AASHTO TYPE IV GIRDER

(2 REQ'D PER GIRDER)



DETAIL "A"

(FOR AASHTO TYPE IV GIRDERS)

— DEAD LOAD DEFLECTION TABLE FOR GIRDERS OF SPANS A & B —

0.6" Ø LOW RELAXATION	GIRDERS 1 THRU 4										
	TENTH POINTS	0	.1	.2	.3	.4	.5	.6	.7	.8	.9
CAMBER ( GIRDER ALONE IN PLACE )	0	0.043	0.082	0.112	0.131	0.138	0.131	0.112	0.082	0.043	0
* DEFLECTION DUE TO SUPERIMPOSED D.L.	0	0.033	0.066	0.091	0.108	0.113	0.108	0.091	0.066	0.033	0
FINAL CAMBER	0	1/8"	3/16"	1/4"	5/16"	5/16"	5/16"	1/4"	3/16"	1/8"	0

\* INCLUDES FUTURE WEARING SURFACE  
ALL VALUES ARE SHOWN IN FEET ( DECIMAL FORM ), EXCEPT " FINAL CAMBER ", WHICH IS GIVEN IN INCHES ( FRACTION FORM ).

PROJECT NO. R-5311A  
HERTFORD COUNTY  
STATION: 25+47.22 -Y1-

SHEET 3 OF 4

ASSEMBLED BY : D. HODGE	DATE : 3/16
CHECKED BY : G.M. GILLAND	DATE : 3/16
DRAWN BY : ELR 11/91	REV. 10/1/11 MAA/GM
CHECKED BY : GRP 11/91	REV. 1/15 MAA/TMG
	REV. 2/15 MAA/TMG

DOCUMENT NOT CONSIDERED FINAL  
UNLESS ALL SIGNATURES COMPLETED

ENGINEER OF RECORD:  
DocuSigned by:  
*Eric Charles*  
STATE OF NORTH CAROLINA  
PROFESSIONAL ENGINEER  
SEAL 14091  
ERIC CHARLES  
12/27/2016

ETHERILL ENGINEERING  
1223 Jones Franklin Rd.  
Raleigh, N.C. 27606  
Bus: 919 851 8077  
Fax: 919 851 8107  
LICENSE NO. F-0377

STATE OF NORTH CAROLINA  
DEPARTMENT OF TRANSPORTATION  
RALEIGH  
STANDARD  
PRESTRESSED CONCRETE GIRDER  
CONTINUOUS FOR LIVE LOAD  
DETAILS

REVISIONS						SHEET NO.
NO.	BY:	DATE:	NO.	BY:	DATE:	S01-12
1			3			TOTAL SHEETS
2			4			61

P:\2015\A-5311A\Structures\Str 1 -Y1-DGNR-5311A-STR\_Y1\_PCG.dgn  
 12/20/2016 1:00:48 PM