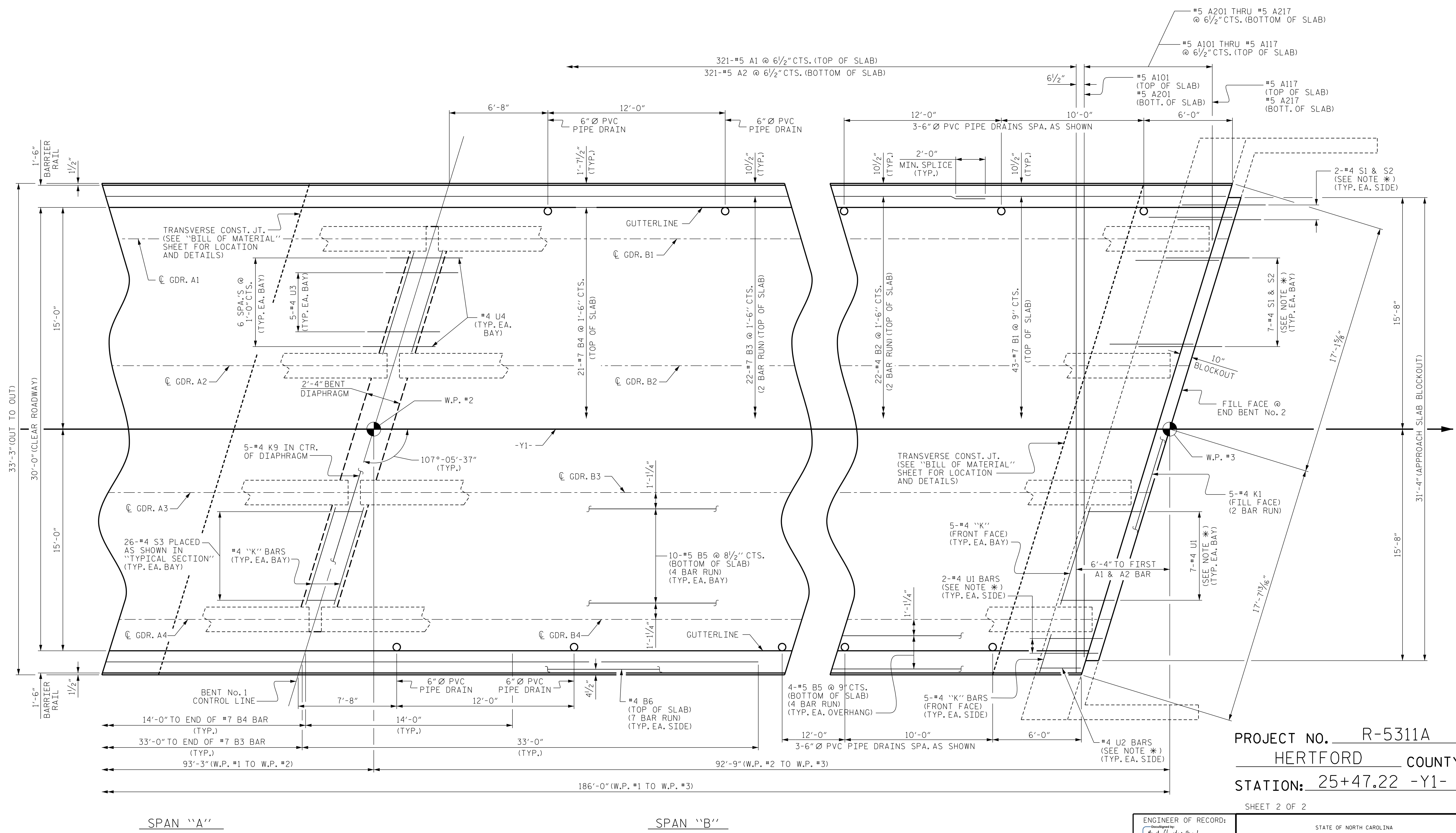


P:\2015\A-R-5311A\Structures\Str 1 -Y1-DGN\WR-5311A-STR_Y1_PS.dgn
 4/5/2017 8:39:54 AM



SPAN "A"

SPAN "B"

PARTIAL PLAN OF SPAN

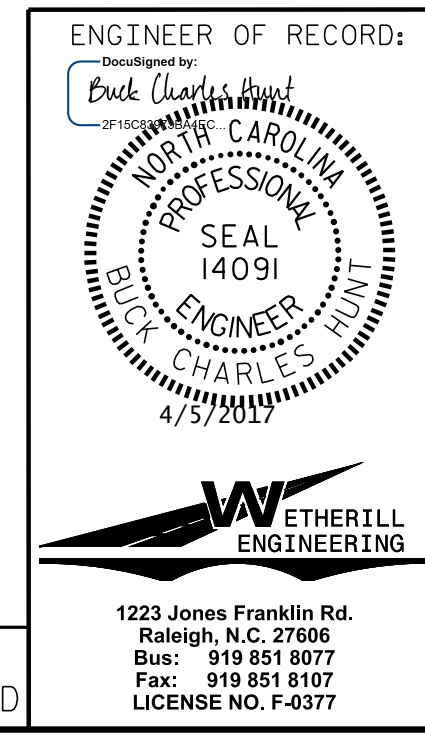
NOTES :
 FOR CONCRETE BARRIER RAIL DETAILS AND REINFORCING STEEL, SEE "CONCRETE BARRIER RAIL" SHEETS.
 * THESE BARS ARE TO MATCH SPACING OF THE #4 "V" BARS IN END BENT.
 FOR LOCATIONS OF INTERMEDIATE STEEL DIAPHRAGMS, SEE "GIRDER LAYOUT" SHEET.

PROJECT NO. R-5311A
 HERTFORD COUNTY
 STATION: 25+47.22 -Y1-

SHEET 2 OF 2

DRAWN BY: D. HODGE DATE: 2/16
 CHECKED BY: G.M. GILLAND DATE: 2/16

DOCUMENT NOT CONSIDERED FINAL
 UNLESS ALL SIGNATURES COMPLETED



STATE OF NORTH CAROLINA
 DEPARTMENT OF TRANSPORTATION
 RALEIGH

**SUPERSTRUCTURE
 PLAN OF SPAN**

| REVISIONS | | | | | |
|-----------|-----|-------|-----|-----|-------|
| NO. | BY: | DATE: | NO. | BY: | DATE: |
| 1 | | | 3 | | |
| 2 | | | 4 | | |

| | | |
|--------------|--|-------|
| SHEET NO. | | S01-8 |
| TOTAL SHEETS | | 61 |