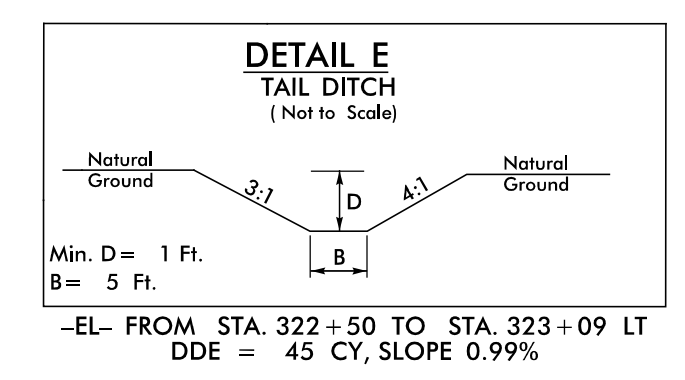
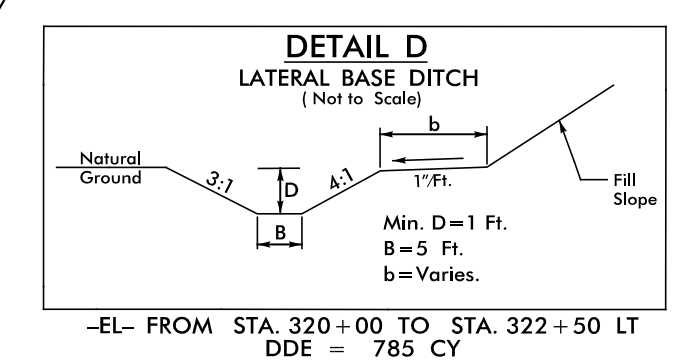
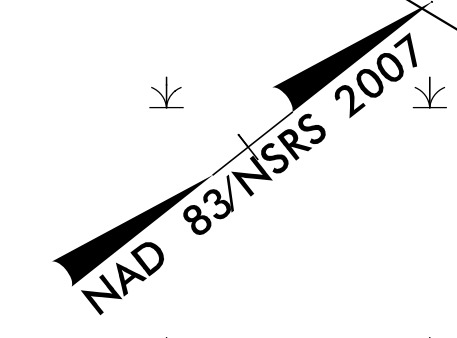




5121 Kingdom Way,
Suite 100
Raleigh, NC 27607
NC License No: F-0258

PROJECT REFERENCE NO.	SHEET NO.
R-5311A	EC-17/CONST.05
RW SHEET NO.	
ROADSIDE ENVIRONMENTAL PROJECT ENGINEER	

LEVEL III CERTIFIED BY:
STACEY H. BAILEY, PE
CERTIFICATION NUMBER: 3074
ISSUED: JANUARY 13, 2017

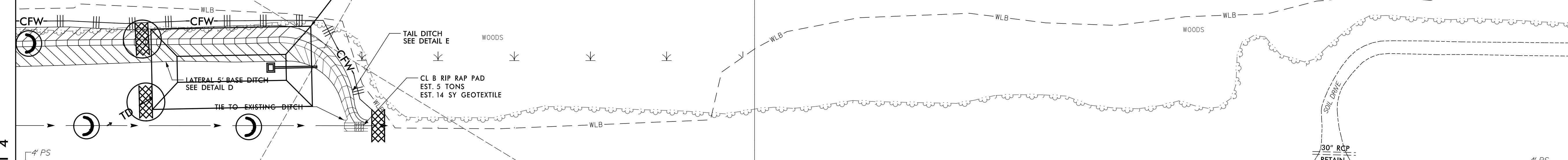


RACHAEL MODLIN
PIN:5984-21-0506
DB 400 PG 599

6
TIMBERVEST PARTNERS II
NORTH CAROLINA, LLC
PIN:5984-72-4841
DB 688 PG 459
MB 4 PG 125

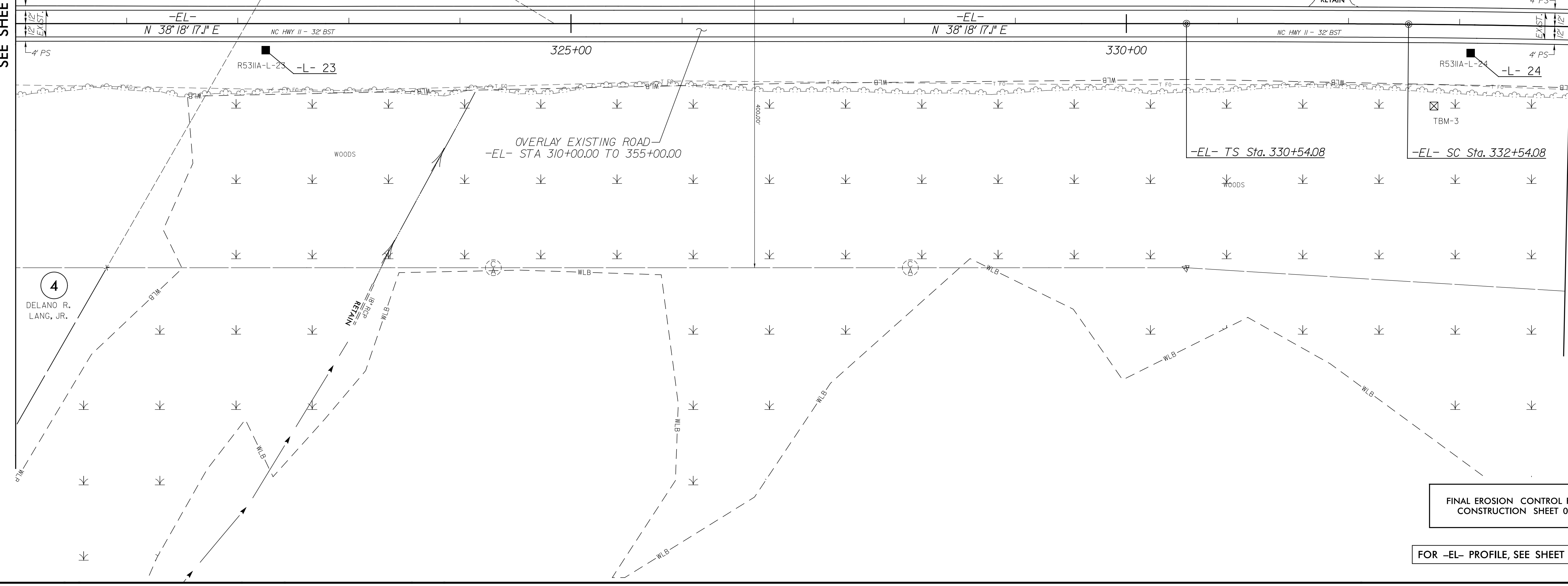
2
DELANO R. LANG, JR.

144 x 72 x 2
2.0 inch Skimmer
with 2.0 inch
Orifice Diameter
40 ft. weir
ID 5.01



MATCHLINE -EL- STA 320+00
SEE SHEET 4

MATCHLINE -EL- STA 334+00
SEE SHEET 6



R5311A-L-24
-L- 24
TBM-3
-EL- TS Sta. 330+54.08
-EL- SC Sta. 332+54.08

OVERLAY EXISTING ROAD
-EL- STA 310+00.00 TO 355+00.00

4
DELANO R. LANG, JR.

FINAL EROSION CONTROL FOR
CONSTRUCTION SHEET 05

FOR -EL- PROFILE, SEE SHEET 12 & 13

REVISIONS

8/17/99

1/3/2017
R5311A_HwyErosion_Final.psh_05.dgn
ICA ENGINEERING, INC.