

5/28/17

-Y2-



5121 Kingdom Way,
Suite 100
Raleigh, NC 27607
NC License No: F-0258

PROJECT REFERENCE NO. R-5311A	SHEET NO. 16
ROADWAY DESIGN ENGINEER SEAL 032074 DENY C. SNEAD	HYDRAULICS ENGINEER SEAL 034364 LUCAS O. COLMIST
DocuSigned by: Dena C. Snoad 5/10/2017	DocuSigned by: Lucas O. Colmiste 5/10/2017

DOCUMENT NOT CONSIDERED FINAL UNLESS ALL SIGNATURES COMPLETED

PIPE HYDRAULIC DATA
24" RCP STA 54+18 -Y2-

DRAINAGE AREA	= 15	AC
DESIGN FREQUENCY	= 50	YRS
DESIGN DISCHARGE	= 17	CFS
DESIGN HW ELEVATION	= 48.4	FT
100 YEAR DISCHARGE	= 21	CFS
100 YEAR HW ELEVATION	= 49.5	FT
OVERTOPPING FREQUENCY	= 500+	YRS
OVERTOPPING DISCHARGE	= 69	CFS
OVERTOPPING ELEVATION	= 50.3	FT
INV IN	= 45.45	
INV OUT	= 44.67	

BEGIN BRIDGE
-Y2- STA 49+65.58

PI = 50+50.00
EL = 90.50'
VC = 1,240'
K = 189
DS = 60mph

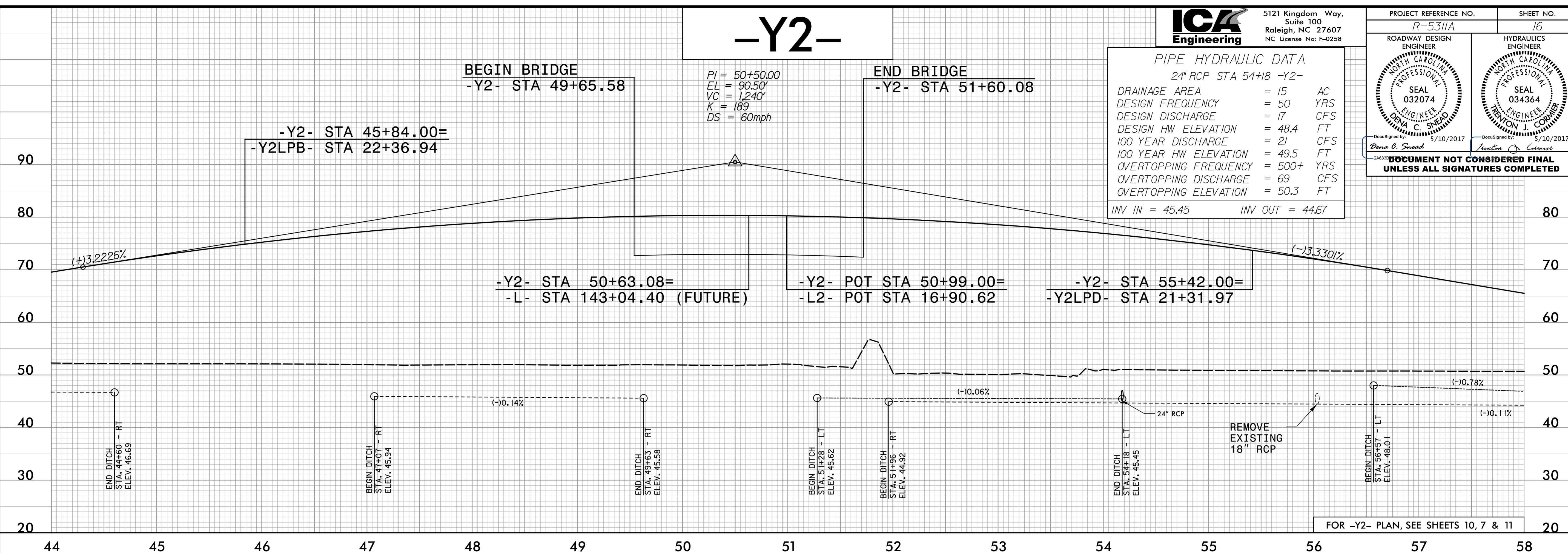
END BRIDGE
-Y2- STA 51+60.08

-Y2- STA 45+84.00=
-Y2LPB- STA 22+36.94

-Y2- STA 50+63.08=
-L- STA 143+04.40 (FUTURE)

-Y2- POT STA 50+99.00=
-L2- POT STA 16+90.62

-Y2- STA 55+42.00=
-Y2LPD- STA 21+31.97



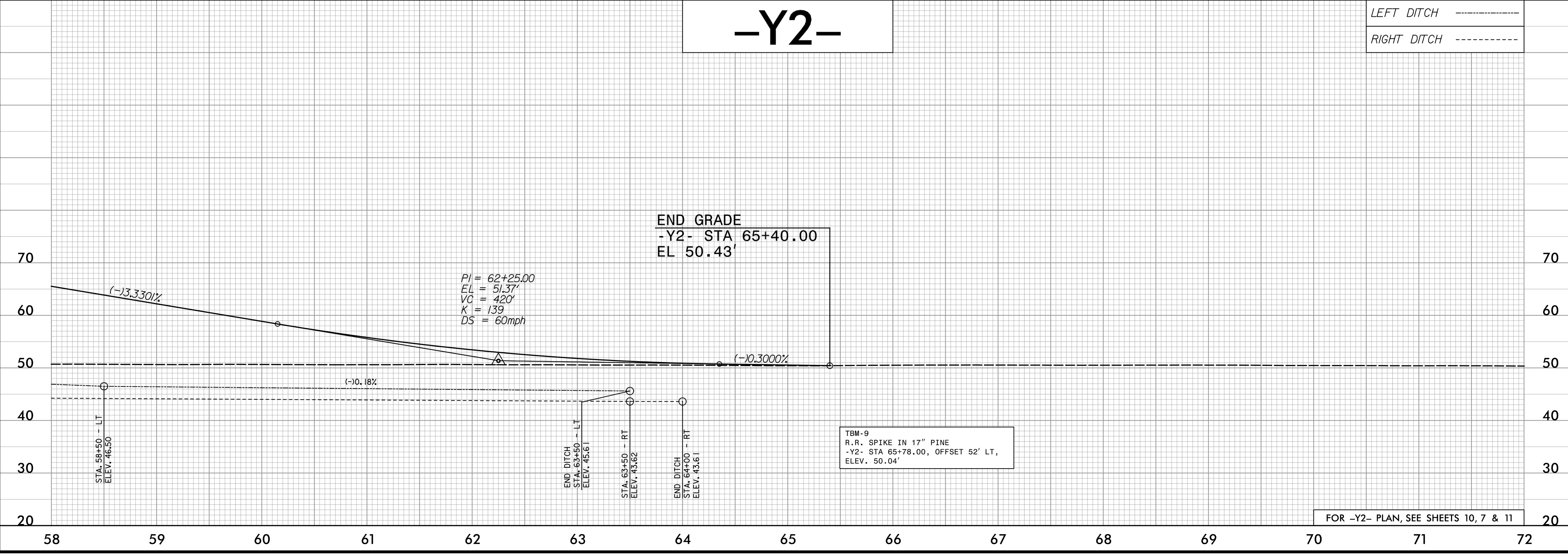
FOR -Y2- PLAN, SEE SHEETS 10, 7 & 11

-Y2-

LEFT DITCH -----
RIGHT DITCH -----

END GRADE
-Y2- STA 65+40.00
EL 50.43'

PI = 62+25.00
EL = 51.37'
VC = 420'
K = 139
DS = 60mph



FOR -Y2- PLAN, SEE SHEETS 10, 7 & 11

5/16/2017 10:41:18 AM P:\Projects\1714\RDY_PSH_16.dgn