
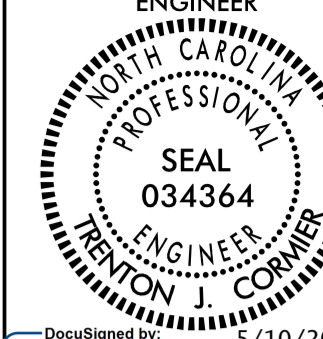


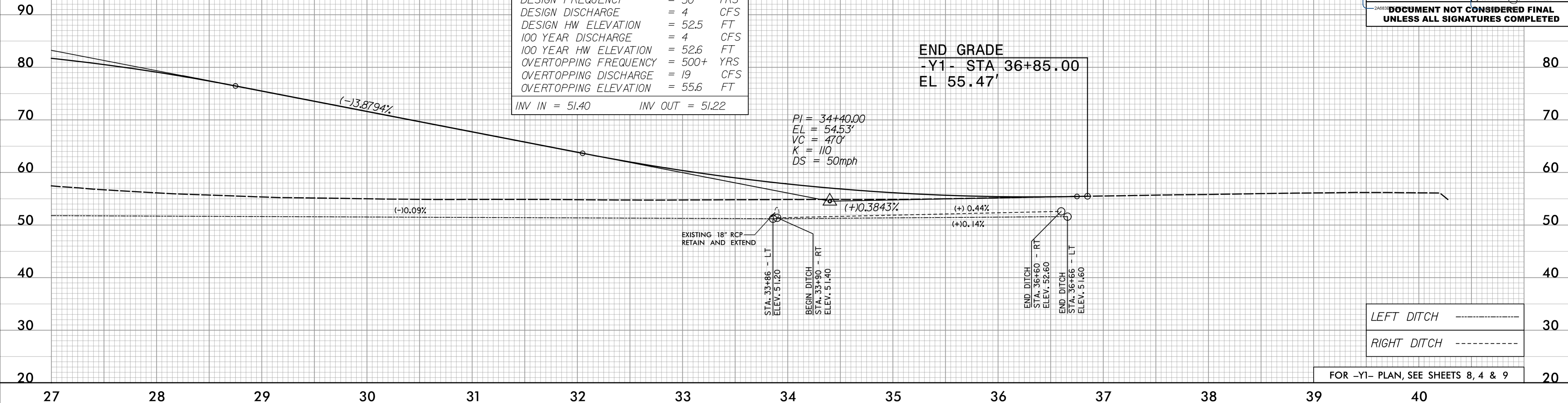
5/28/09

# -Y1-

**ICA Engineering**  
 5121 Kingdom Way,  
 Suite 100  
 Raleigh, NC 27607  
 NC License No: F-0258

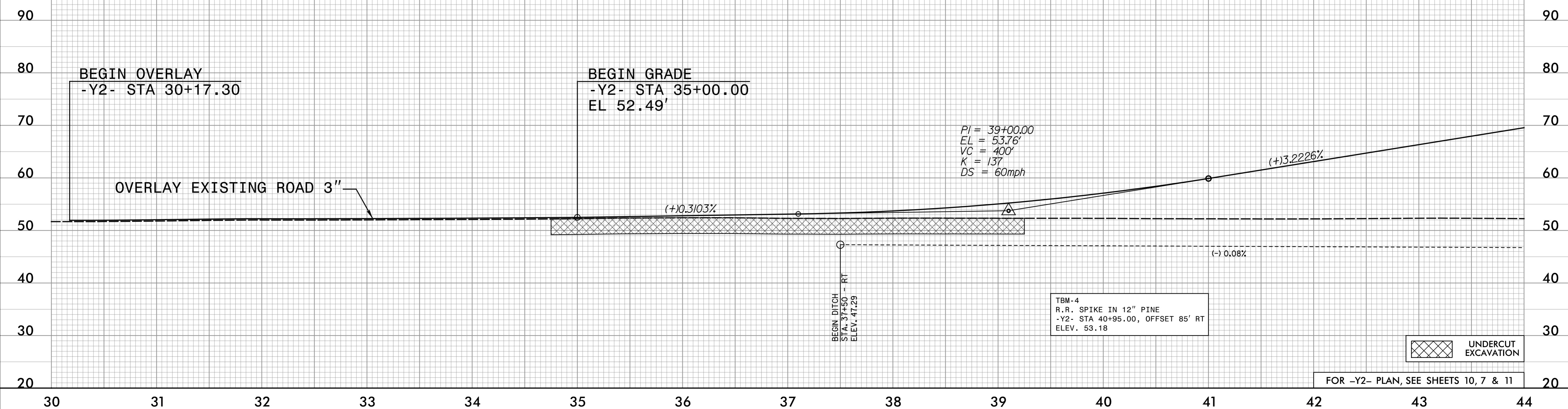
PROJECT REFERENCE NO. <i>R-5311A</i>	SHEET NO. <i>15</i>
ROADWAY DESIGN ENGINEER <i>Dena C. Sneed</i>	HYDRAULICS ENGINEER <i>Levcon O. Colmest</i>
 Dena C. Sneed 5/10/2017	 Levcon O. Colmest 5/10/2017
<b>DOCUMENT NOT CONSIDERED FINAL UNLESS ALL SIGNATURES COMPLETED</b>	

PIPE HYDRAULIC DATA	
18" RCP STA 33+90 -Y1-	
DRAINAGE AREA	= 1 AC
DESIGN FREQUENCY	= 50 YRS
DESIGN DISCHARGE	= 4 CFS
DESIGN HW ELEVATION	= 52.5 FT
100 YEAR DISCHARGE	= 4 CFS
100 YEAR HW ELEVATION	= 52.6 FT
OVERTOPPING FREQUENCY	= 500+ YRS
OVERTOPPING DISCHARGE	= 19 CFS
OVERTOPPING ELEVATION	= 55.6 FT
INV IN	= 51.40
INV OUT	= 51.22



FOR -Y1- PLAN, SEE SHEETS 8, 4 & 9

# -Y2-



FOR -Y2- PLAN, SEE SHEETS 10, 7 & 11

5/16/2017 10:41:14 AM P:\01\RES311A-RDY\_PSH\_15.dgn