

**This electronic collection of documents is provided
for the convenience of the user
and is Not a Certified Document –**

**The documents contained herein were originally issued
and sealed by the individuals whose names and license
numbers appear on each page, on the dates appearing
with their signature on that page.**

**This file or an individual page
shall not be considered a certified document.**

09.08/99

TIP PROJECT: B-5345

STATE OF NORTH CAROLINA
DIVISION OF HIGHWAYS

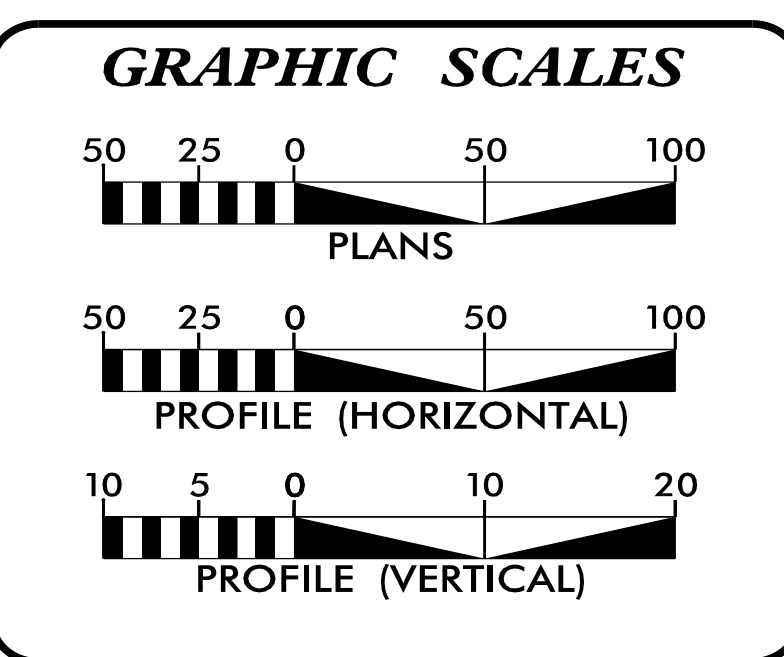
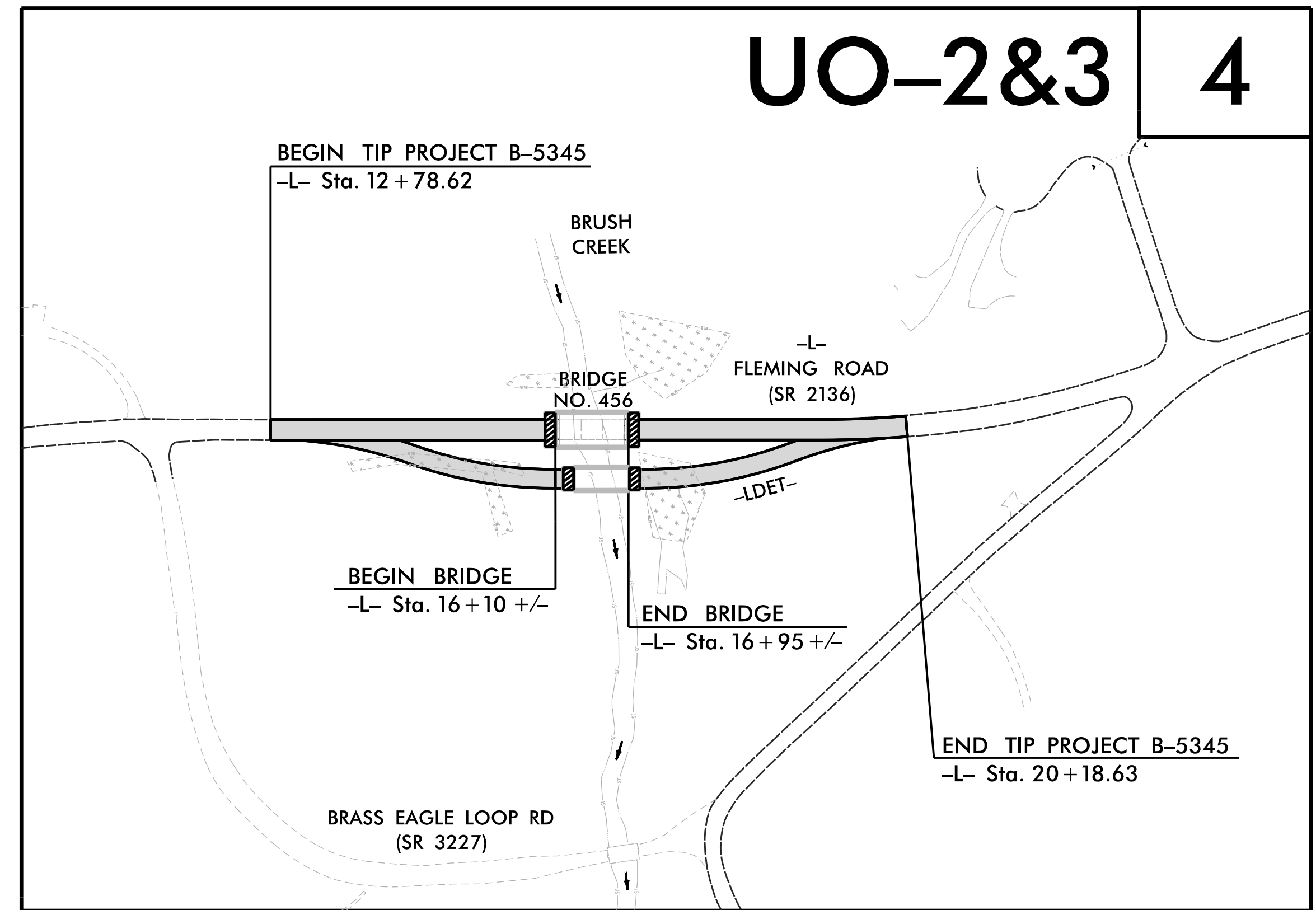
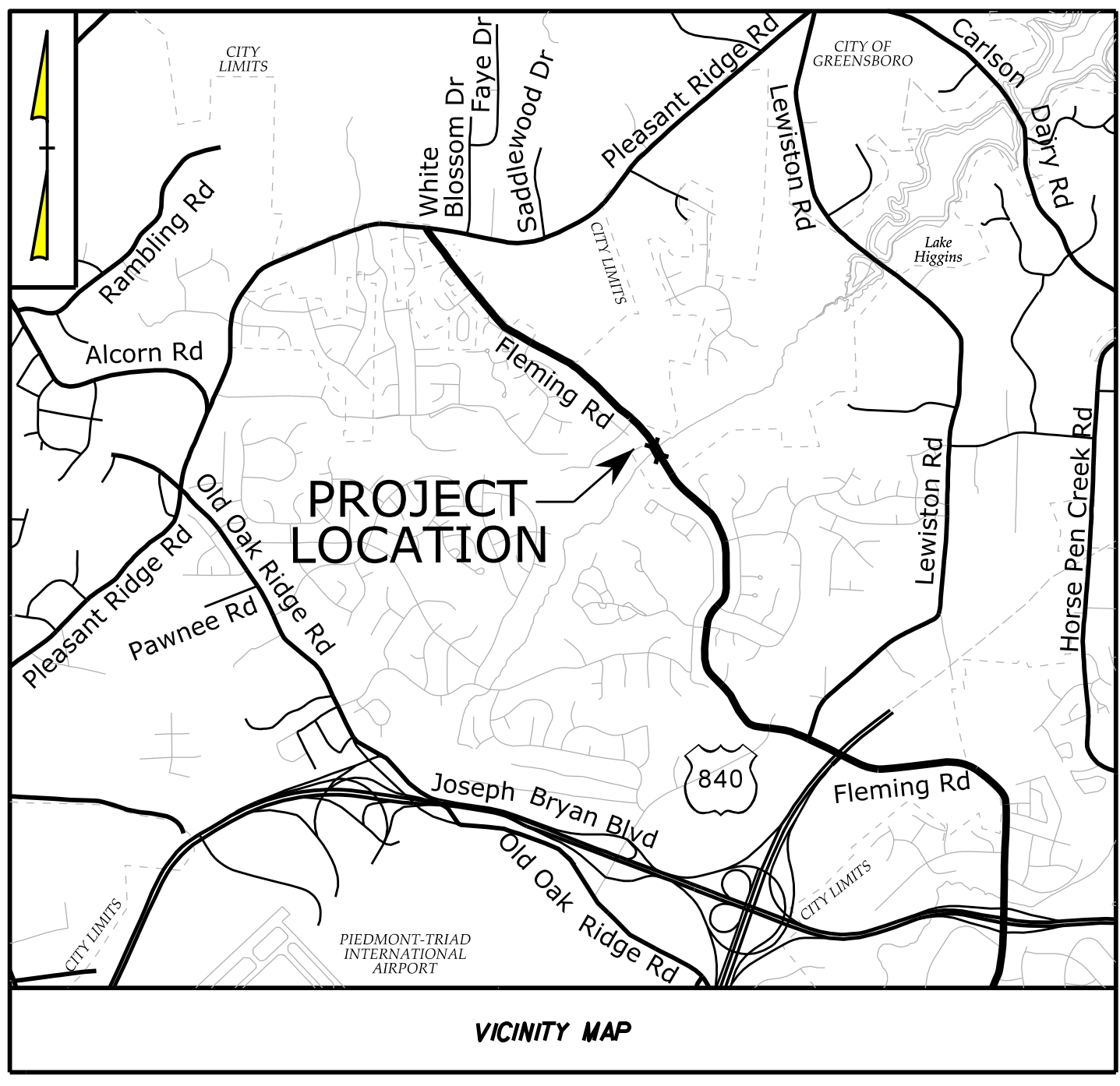
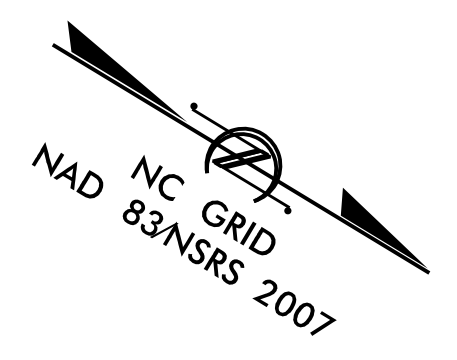
T.I.P. NO.	SHEET NO.
B-5345	UO-1

NOTE:
ALL UTILITY WORK SHOWN ON THIS SHEET IS DONE BY OTHERS.
NO PAYMENT WILL BE MADE TO THE CONTRACTOR FOR UTILITY WORK SHOWN ON THIS SHEET.

**UTILITIES BY OTHERS PLANS
GUILFORD COUNTY**

**LOCATION: BRIDGE NO. 456 OVER BRUSH CREEK
ON SR 2136 (FLEMING ROAD)**

**TYPE OF WORK: UNDERGROUND AND OVERHEAD TELEPHONE
RELOCATIONS AND GAS MAIN ADJUSTMENTS**



INDEX OF SHEETS	
SHEET NO.:	DESCRIPTION:
UO-1	TITLE SHEET
UO-2 THRU UO-3	UBO PLAN SHEETS

UTILITY OWNERS WITH CONFLICTS
(A) COMMUNICATIONS - AT&T
(B) GAS - PIEDMONT NATURAL GAS

PREPARED IN THE OFFICE OF:

JOHN FAISON UTILITY PROJECT MANAGER
JOSH BARBOUR PROJECT UTILITY COORDINATOR
JOSH BARBOUR PROJECT UTILITY XXXX

**DIVISION OF HIGHWAYS
UTILITIES UNIT**
 1555 MAIL SERVICES CENTER
 RALEIGH, NC 27699-1555
 PHONE (919) 707-6690
 FAX (919) 250-4151

DONNA JACKSON UTILITIES REGIONAL ENGINEER
J.T. YOON UTILITIES ENGINEER
ED REAMS UTILITIES AREA COORDINATOR
KYLE PLEASANT UTILITIES COORDINATOR

11:48:49 AM
290_001_B5345_ut_1.tbl_U001_psh.dgn
Division:

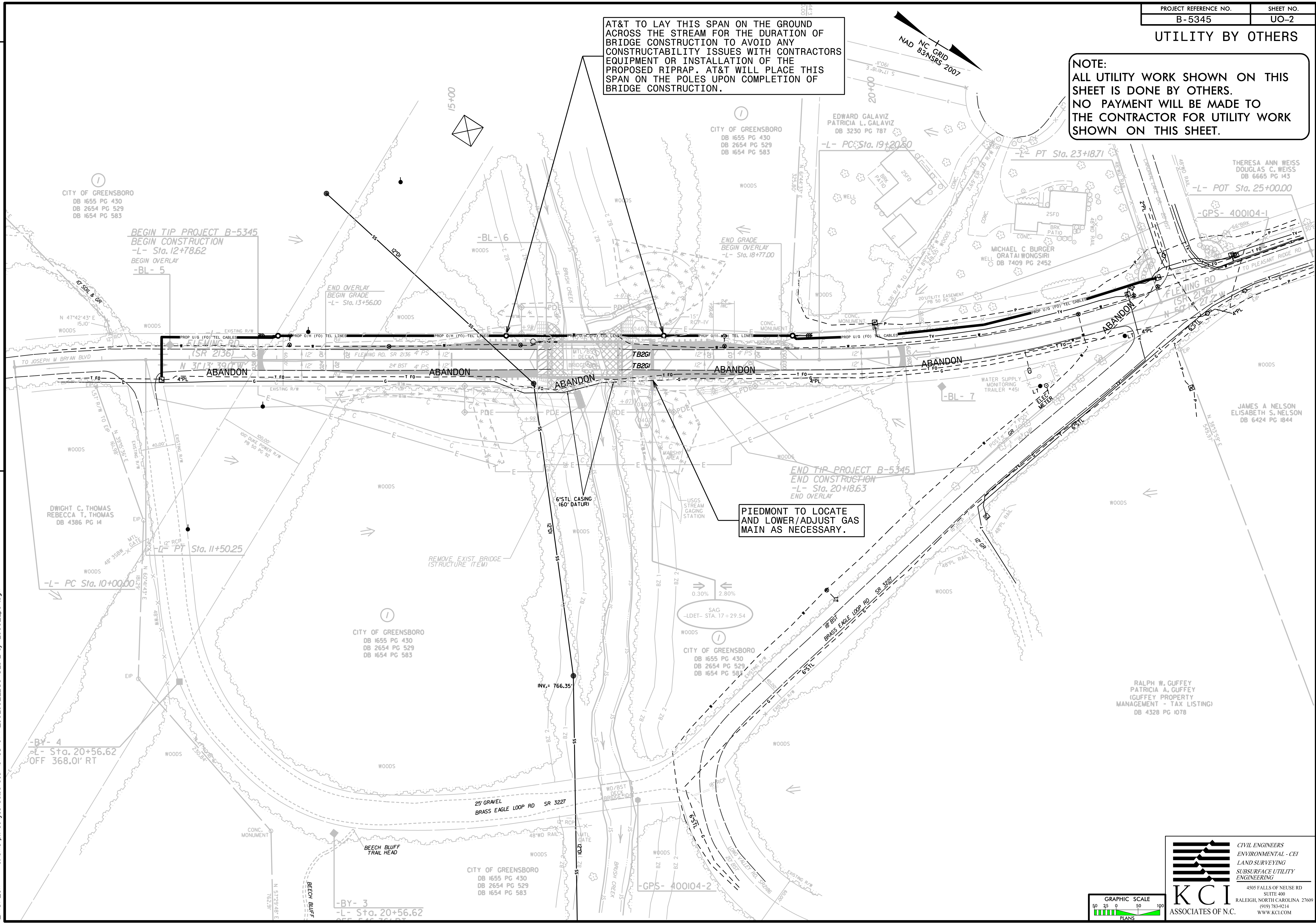
UTILITY BY OTHERS

NOTE:
ALL UTILITY WORK SHOWN ON THIS SHEET IS DONE BY OTHERS. NO PAYMENT WILL BE MADE TO THE CONTRACTOR FOR UTILITY WORK SHOWN ON THIS SHEET.

AT&T TO LAY THIS SPAN ON THE GROUND ACROSS THE STREAM FOR THE DURATION OF BRIDGE CONSTRUCTION TO AVOID ANY CONSTRUCTABILITY ISSUES WITH CONTRACTORS EQUIPMENT OR INSTALLATION OF THE PROPOSED RIPRAP. AT&T WILL PLACE THIS SPAN ON THE POLES UPON COMPLETION OF BRIDGE CONSTRUCTION.

PIEDMONT TO LOCATE AND LOWER/ADJUST GAS MAIN AS NECESSARY.

REVISIONS



CITY OF GREENSBORO
DB 1655 PG 430
DB 2654 PG 529
DB 1654 PG 583

BEGIN TIP PROJECT B-5345
BEGIN CONSTRUCTION
-L- Sta. 12+78.62
BEGIN OVERLAY
-BL- 5

END OVERLAY
BEGIN GRADE
-L- Sta. 13+56.00

END GRADE
BEGIN OVERLAY
-L- Sta. 18+77.00

END TIP PROJECT B-5345
END CONSTRUCTION
-L- Sta. 20+18.63
END OVERLAY

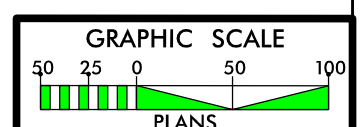
DWIGHT C. THOMAS
REBECCA T. THOMAS
DB 4386 PG 14

CITY OF GREENSBORO
DB 1655 PG 430
DB 2654 PG 529
DB 1654 PG 583

CITY OF GREENSBORO
DB 1655 PG 430
DB 2654 PG 529
DB 1654 PG 583

RALPH W. GUFFEY
PATRICIA A. GUFFEY
(GUFFEY PROPERTY
MANAGEMENT - TAX LISTING)
DB 4328 PG 1078

CITY OF GREENSBORO
DB 1655 PG 430
DB 2654 PG 529
DB 1654 PG 583



CIVIL ENGINEERS
ENVIRONMENTAL - CEI
LAND SURVEYING
SUBSURFACE UTILITY
ENGINEERING

KCI
ASSOCIATES OF N.C.

4505 FALLS OF NEUSE RD
SUITE 400
RALEIGH, NORTH CAROLINA 27609
(919) 783-9214
WWW.KCI.COM

2/13/2017 c:\dms\p\w\se\joshua\barbour\dms54074_290_002_B5345_of_044_U002_psh.dgn

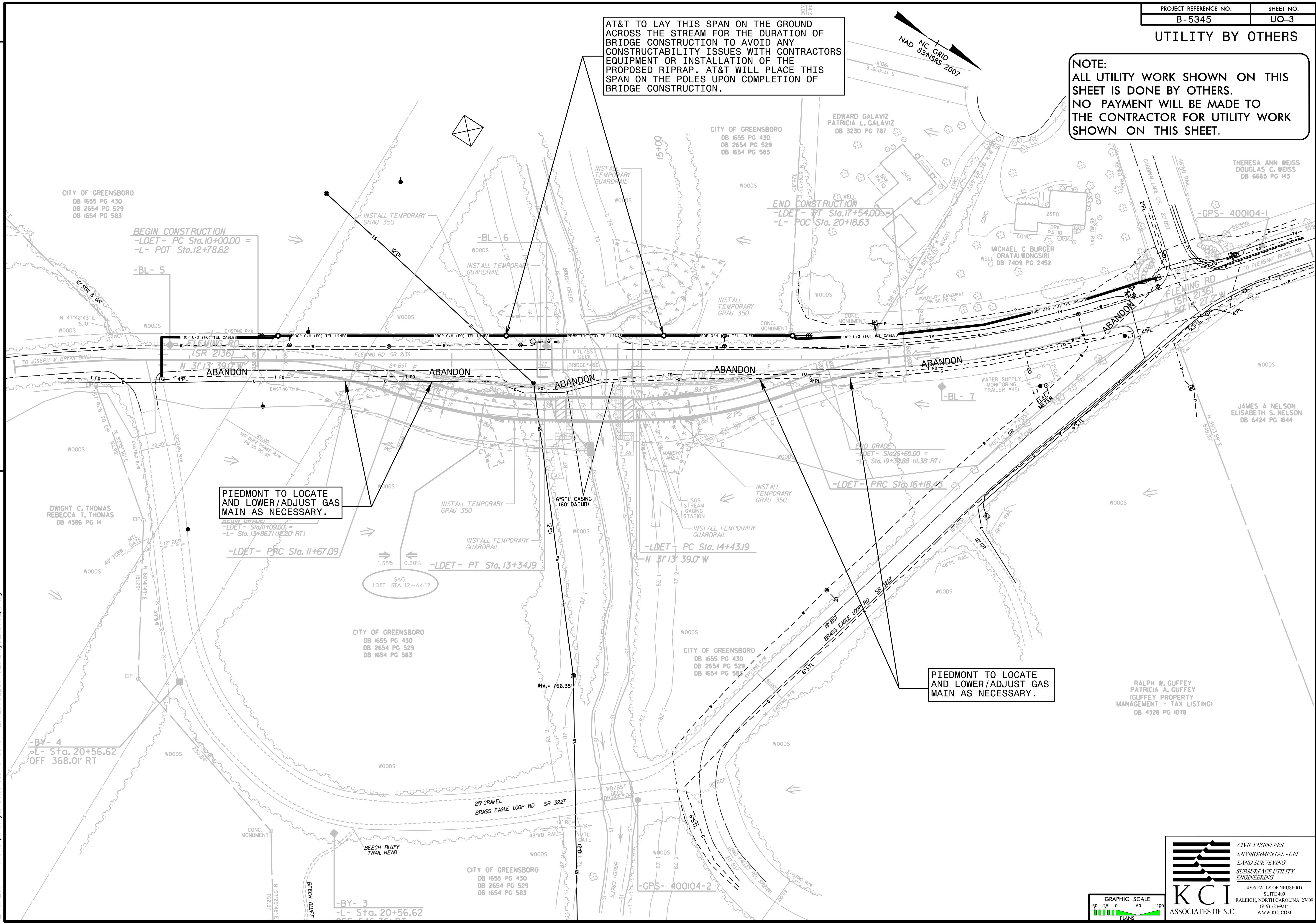
UTILITY BY OTHERS

NOTE:
ALL UTILITY WORK SHOWN ON THIS SHEET IS DONE BY OTHERS. NO PAYMENT WILL BE MADE TO THE CONTRACTOR FOR UTILITY WORK SHOWN ON THIS SHEET.

AT&T TO LAY THIS SPAN ON THE GROUND ACROSS THE STREAM FOR THE DURATION OF BRIDGE CONSTRUCTION TO AVOID ANY CONSTRUCTABILITY ISSUES WITH CONTRACTORS EQUIPMENT OR INSTALLATION OF THE PROPOSED RIPRAP. AT&T WILL PLACE THIS SPAN ON THE POLES UPON COMPLETION OF BRIDGE CONSTRUCTION.

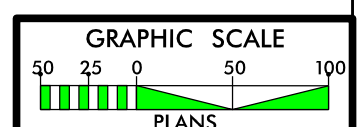
PIEDMONT TO LOCATE AND LOWER/ADJUST GAS MAIN AS NECESSARY.

PIEDMONT TO LOCATE AND LOWER/ADJUST GAS MAIN AS NECESSARY.



REVISIONS

2/13/2017 c:\dms\p\w\se\joshuabarbour\dms54074290_003_B5345_of_045_U003_pshdgn



KCI ASSOCIATES OF N.C.
CIVIL ENGINEERS
ENVIRONMENTAL - CEI
LAND SURVEYING
SUBSURFACE UTILITY ENGINEERING
4505 FALLS OF NEUSE RD
SUITE 400
RALEIGH, NORTH CAROLINA 27609
(919) 783-9214
WWW.KCI.COM