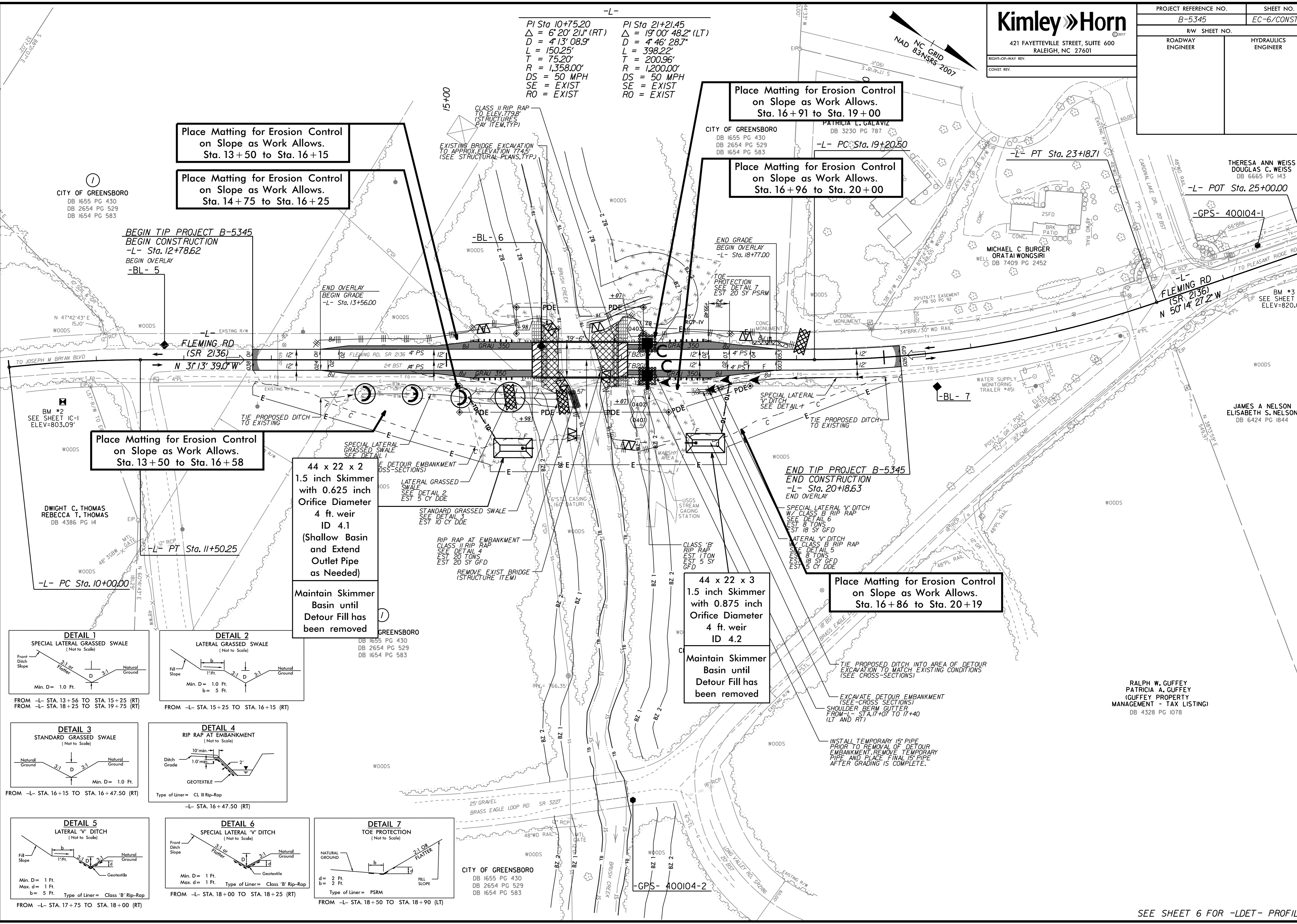
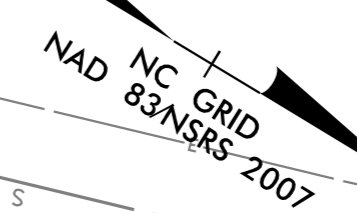


PROJECT REFERENCE NO. B-5345	SHEET NO. EC-6/CONST. 4
ROADWAY ENGINEER	HYDRAULICS ENGINEER

PI Sta 10+75.20 Δ = 6' 20" 21" (RT)
D = 4' 13" 08.9"
L = 150.25'
T = 75.20'
R = 1,358.00'
DS = 50 MPH
SE = EXIST
RO = EXIST

PI Sta 21+21.45 Δ = 19' 00" 48.2" (LT)
D = 4' 46" 28.7"
L = 398.22'
T = 200.96'
R = 1,200.00'
DS = 50 MPH
SE = EXIST
RO = EXIST



Place Matting for Erosion Control on Slope as Work Allows. Sta. 13+50 to Sta. 16+15

Place Matting for Erosion Control on Slope as Work Allows. Sta. 14+75 to Sta. 16+25

Place Matting for Erosion Control on Slope as Work Allows. Sta. 16+91 to Sta. 19+00

Place Matting for Erosion Control on Slope as Work Allows. Sta. 16+96 to Sta. 20+00

Place Matting for Erosion Control on Slope as Work Allows. Sta. 13+50 to Sta. 16+58

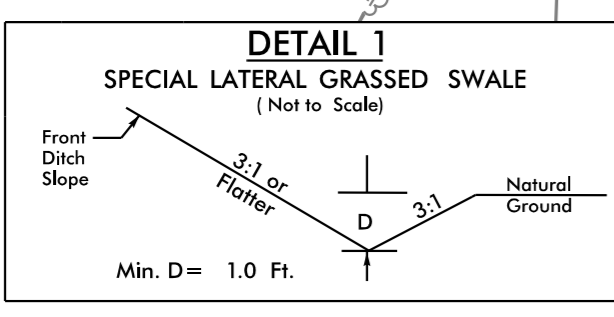
Place Matting for Erosion Control on Slope as Work Allows. Sta. 16+86 to Sta. 20+19

44 x 22 x 2
1.5 inch Skimmer with 0.625 inch Orifice Diameter
4 ft. weir
ID 4.1
(Shallow Basin and Extend Outlet Pipe as Needed)

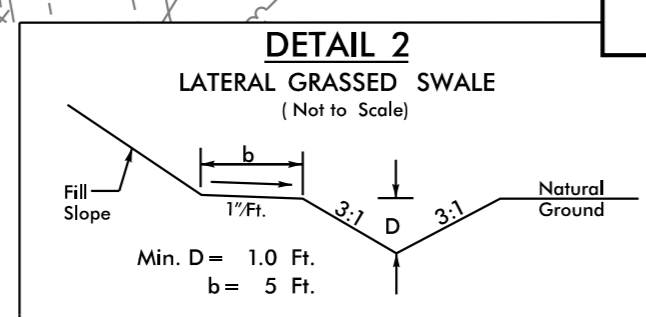
44 x 22 x 3
1.5 inch Skimmer with 0.875 inch Orifice Diameter
4 ft. weir
ID 4.2

Maintain Skimmer Basin until Detour Fill has been removed

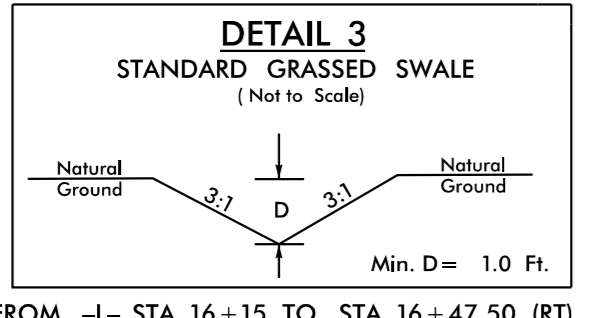
Maintain Skimmer Basin until Detour Fill has been removed



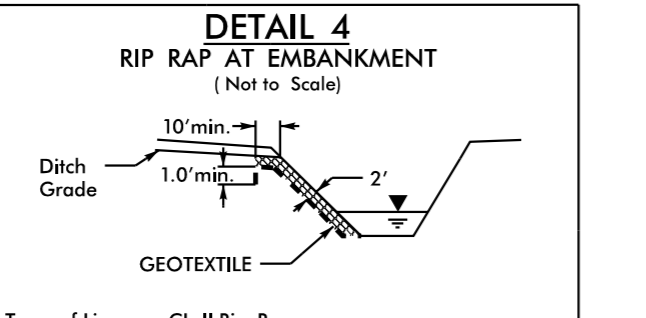
FROM -L- STA. 13+56 TO STA. 15+25 (RT)
FROM -L- STA. 18+25 TO STA. 19+75 (RT)



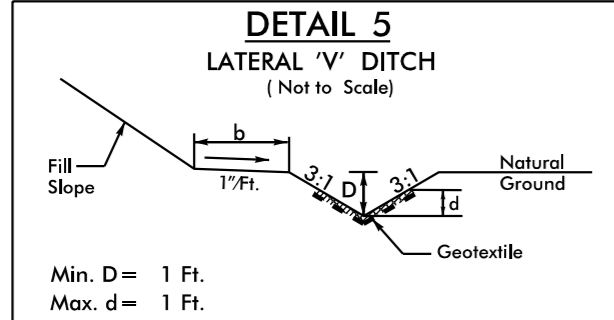
FROM -L- STA. 15+25 TO STA. 16+15 (RT)



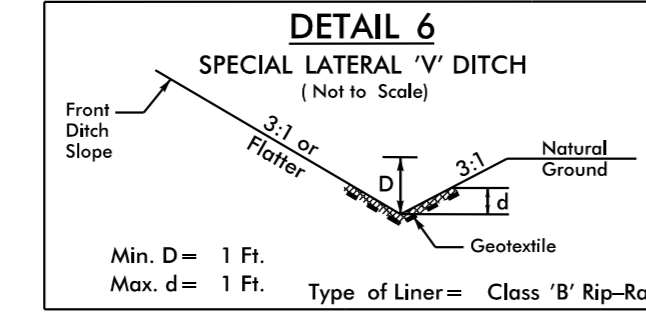
FROM -L- STA. 16+15 TO STA. 16+47.50 (RT)



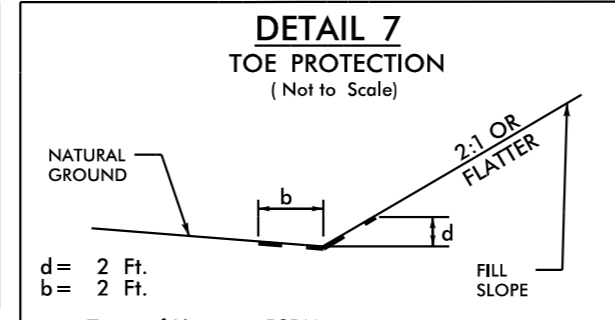
FROM -L- STA. 16+47.50 (RT)



FROM -L- STA. 17+75 TO STA. 18+00 (RT)



FROM -L- STA. 18+00 TO STA. 18+25 (RT)



FROM -L- STA. 18+50 TO STA. 18+90 (LT)

K:\PAL_Roadway\01036275 - B-5345\Erosion Control\B5345_ero_pst06.dgn 2/20/2017

RALPH W. GUFFEY
PATRICIA A. GUFFEY
(GUFFEY PROPERTY MANAGEMENT - TAX LISTING)
DB 4328 PG 1078