

PROJECT REFERENCE NO.		SHEET NO.	
B-5345		EC-2B	
ROADWAY DESIGN ENGINEER		HYDRAULICS ENGINEER	
421 FAYETTEVILLE STREET, SUITE 600 RALEIGH, NC 27601			
RIGHT-OF-WAY REV.			
CONST. REV.			

TEMPORARY ROCK SILT CHECK TYPE 'A' WITH EXCELSIOR MATTING AND POLYACRYLAMIDE (PAM)

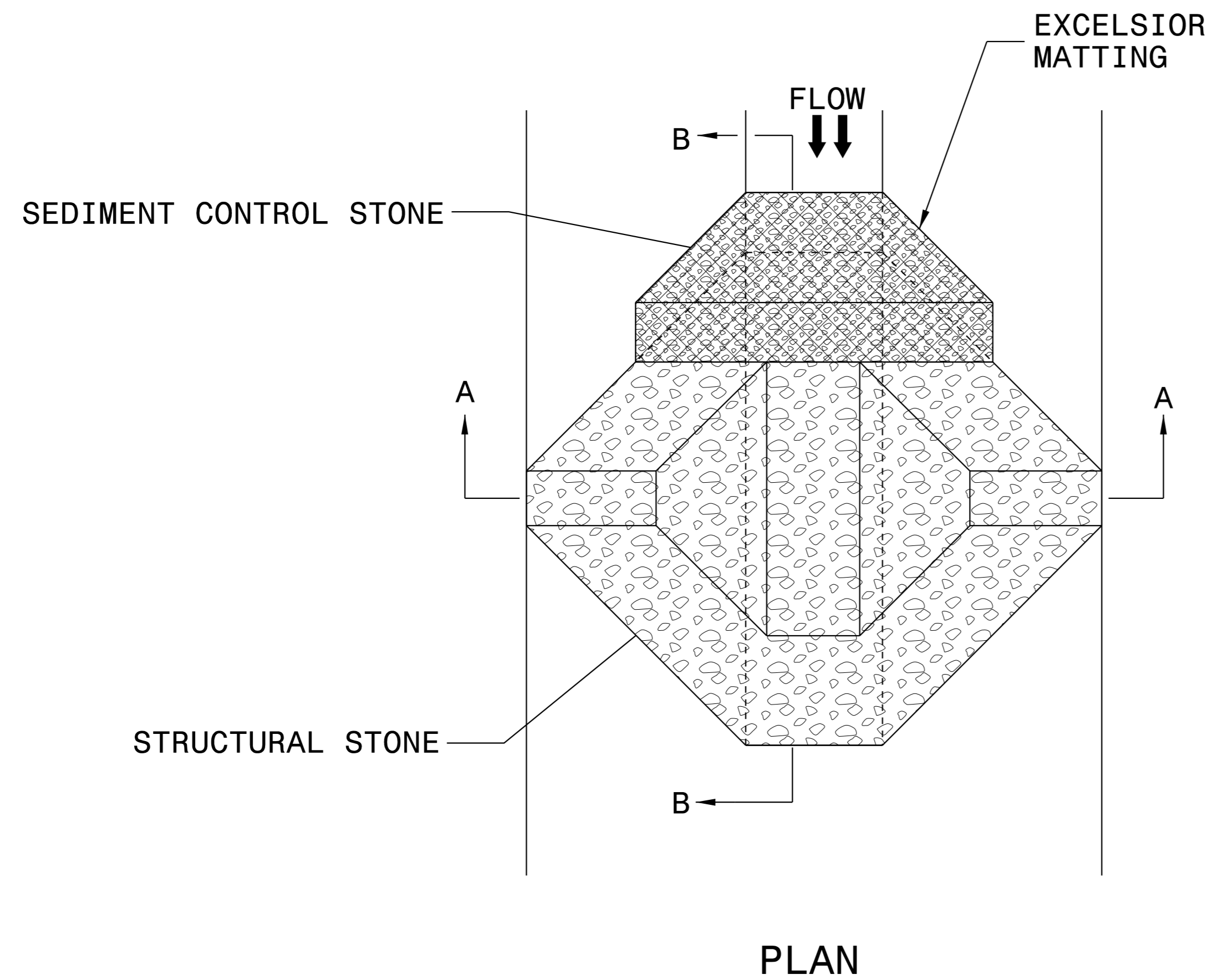
NOTES:

INSTALL TEMPORARY ROCK SILT CHECK TYPE A IN ACCORDANCE WITH ROADWAY STANDARD DRAWING NO. 1633.01.

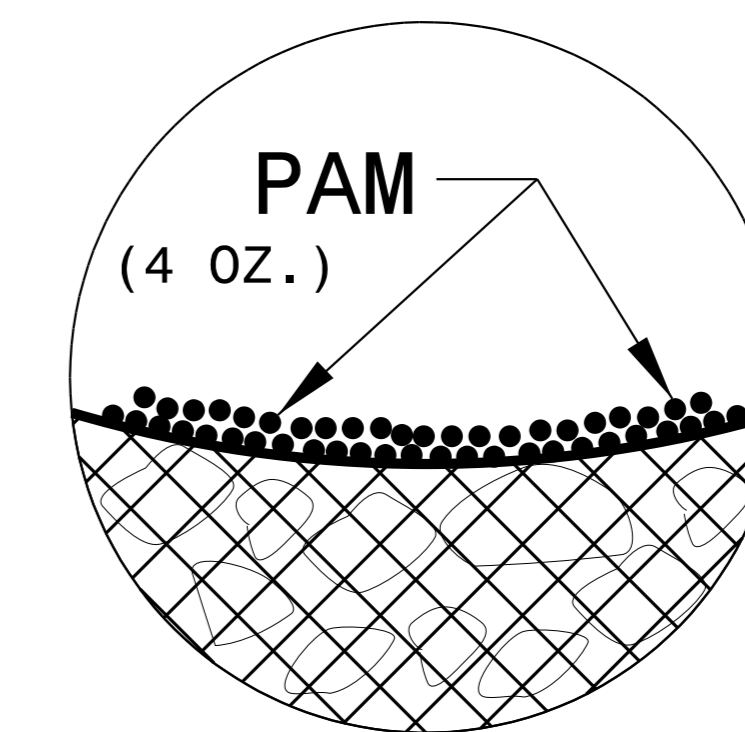
USE EXCELSIOR FOR MATTING MATERIAL AND ANCHOR MATTING SECTION AT TOP AND BOTTOM WITH CLASS B STONE.

PRIOR TO POLYACRYLAMIDE (PAM) APPLICATION, OBTAIN A SOIL SAMPLE FROM PROJECT LOCATION, AND FROM OFFSITE MATERIAL, AND ANALYZE FOR APPROPRIATE PAM FLOCCULANT TO BE APPLIED TO EACH ROCK SILT CHECK.

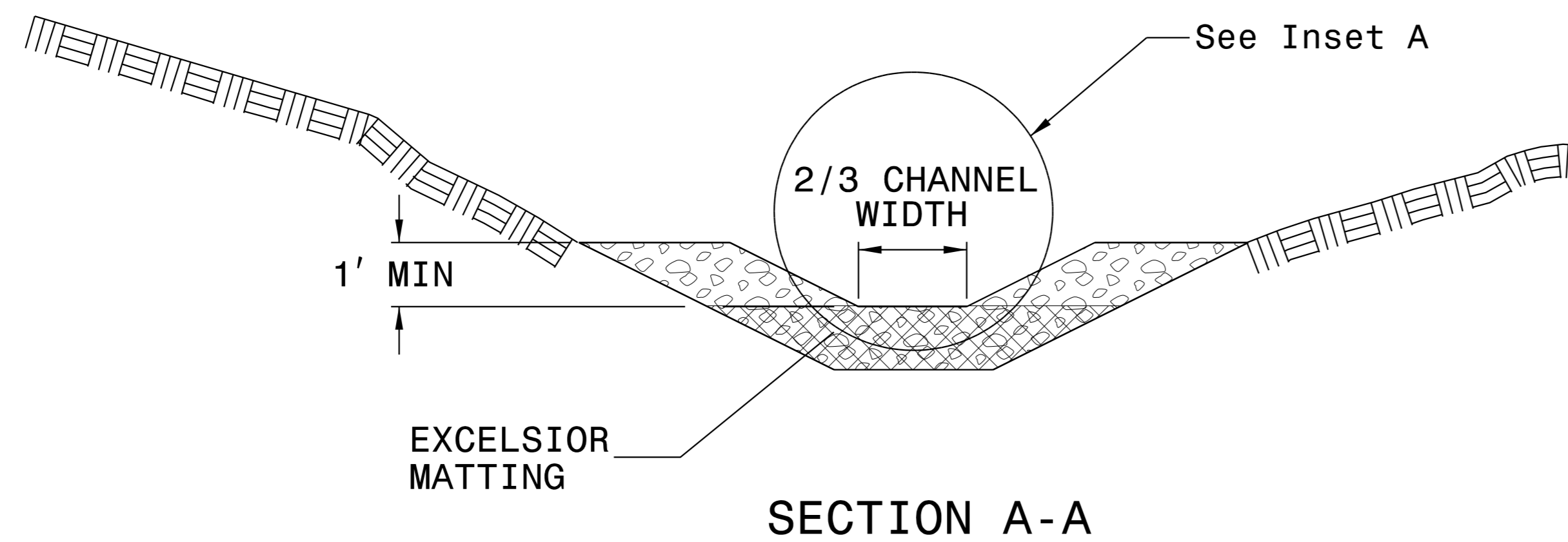
INITIALLY APPLY 4 OUNCES OF POLYACRYLAMIDE (PAM) TO TOP OF MATTING SECTION AND AFTER EVERY RAINFALL EVENT THAT EQUALS OR EXCEEDS 0.50 INCHES.



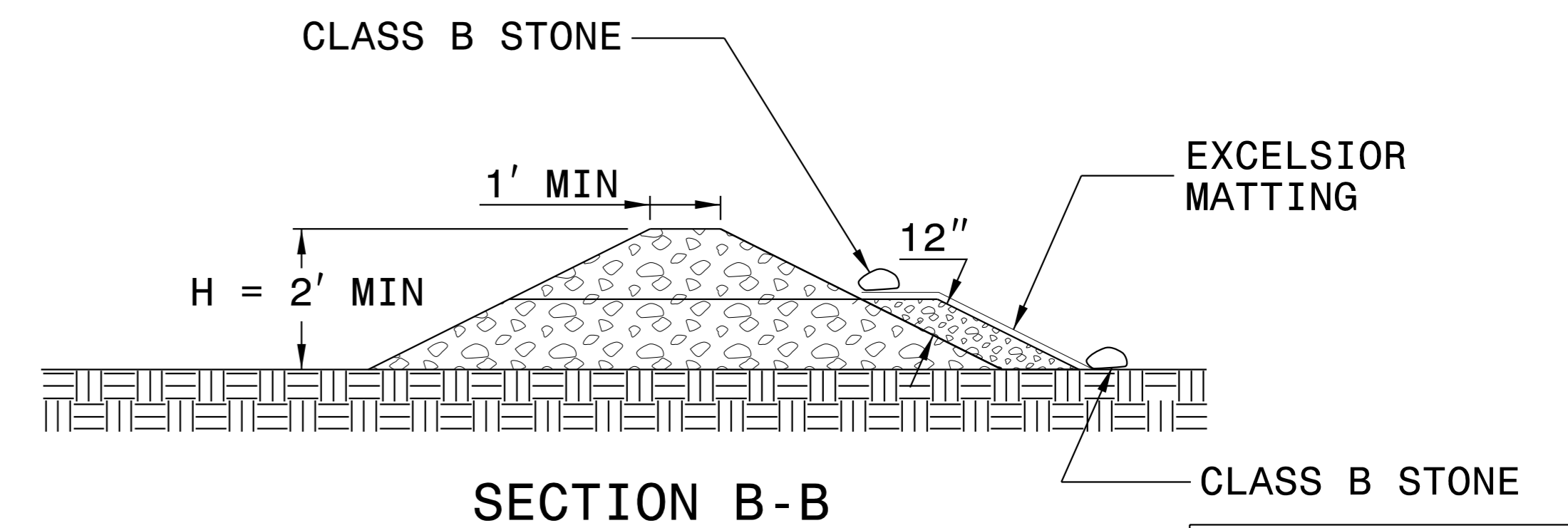
PLAN



INSET A



SECTION A-A



SECTION B-B

NOT TO SCALE

K:\RAL_Roadway\01036275 - B-5345\Erosion Control\B5345_ero_pst\EC02-RF1.dgn

2/3/2017