

REVISIONS

1
CITY OF GREENSBORO
DB 1655 PG 430
DB 2654 PG 529
DB 1654 PG 583

**BEGIN TIP PROJECT B-5345
BEGIN CONSTRUCTION**
-L- Sta. 12+78.62
BEGIN OVERLAY
-BL- 5

END OVERLAY
BEGIN GRADE
-L- Sta. 13+56.00

**END TIP PROJECT B-5345
END CONSTRUCTION**
-L- Sta. 20+18.63
END OVERLAY

DETAIL 1
SPECIAL LATERAL GRASSED SWALE
(Not to Scale)

DETAIL 2
LATERAL GRASSED SWALE
(Not to Scale)

DETAIL 3
STANDARD GRASSED SWALE
(Not to Scale)

DETAIL 4
RIP RAP AT EMBANKMENT
(Not to Scale)

DETAIL 5
LATERAL 'V' DITCH
(Not to Scale)

DETAIL 6
SPECIAL LATERAL 'V' DITCH
(Not to Scale)

DETAIL 7
TOE PROTECTION
(Not to Scale)

PI Sta 10+75.20
Δ = 6' 20" 21" (RT)
D = 4' 13' 08.9"
L = 150.25'
T = 75.20'
R = 1,358.00'
DS = 50 MPH
SE = EXIST
RO = EXIST

PI Sta 21+21.45
Δ = 19' 00" 48.2" (LT)
D = 4' 46' 28.7"
L = 398.22'
T = 200.96'
R = 1,200.00'
DS = 50 MPH
SE = EXIST
RO = EXIST

END GRADE
BEGIN OVERLAY
-L- Sta. 18+77.00

**END TIP PROJECT B-5345
END CONSTRUCTION**
-L- Sta. 20+18.63
END OVERLAY

DETAIL 1
SPECIAL LATERAL GRASSED SWALE
(Not to Scale)

DETAIL 2
LATERAL GRASSED SWALE
(Not to Scale)

DETAIL 3
STANDARD GRASSED SWALE
(Not to Scale)

DETAIL 4
RIP RAP AT EMBANKMENT
(Not to Scale)

DETAIL 5
LATERAL 'V' DITCH
(Not to Scale)

DETAIL 6
SPECIAL LATERAL 'V' DITCH
(Not to Scale)

DETAIL 7
TOE PROTECTION
(Not to Scale)

Kimley Horn

421 FAYETTEVILLE STREET, SUITE 600
RALEIGH, NC 27601

PROJECT REFERENCE NO. B-5345
SHEET NO. 4

ROADWAY ENGINEER
HYDRAULICS ENGINEER

RIGHT-OF-WAY REV. 3/18/16-21 S
CONST. REV.

DOCUMENT NOT CONSIDERED FINAL
UNLESS ALL SIGNATURES COMPLETED

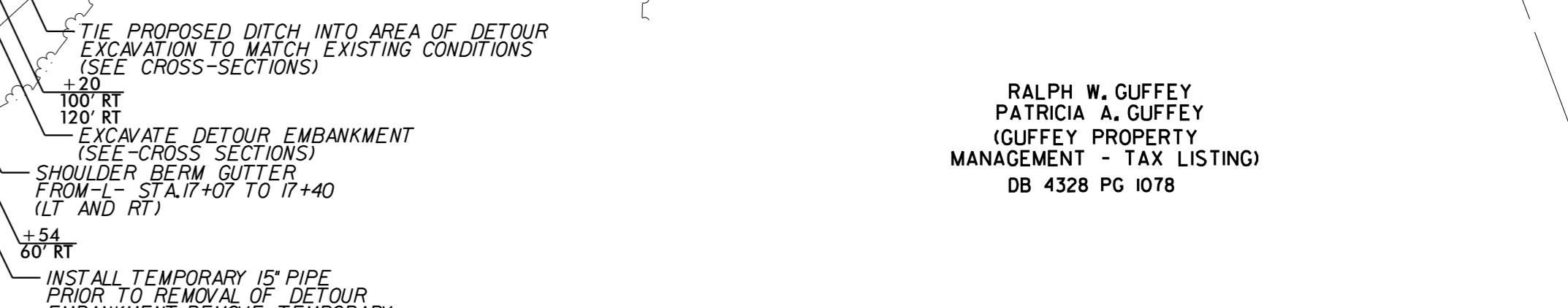
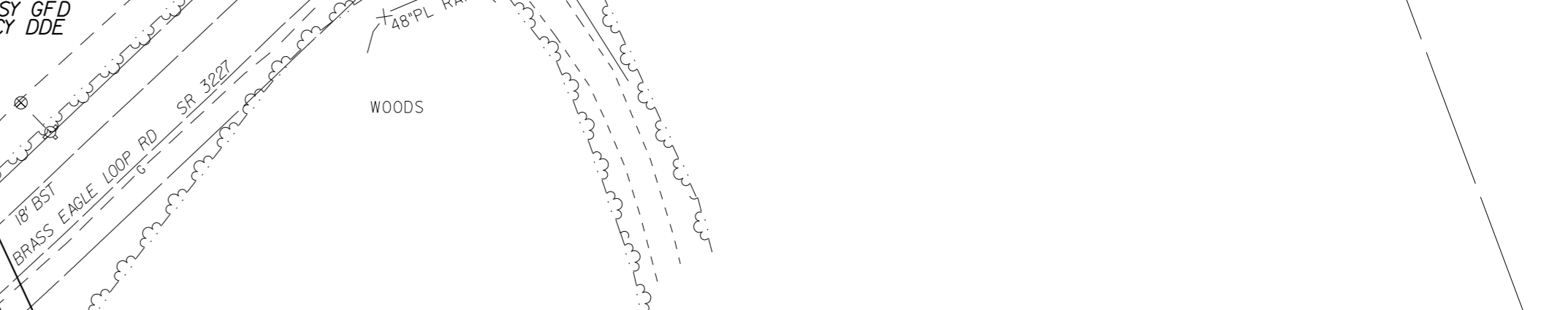
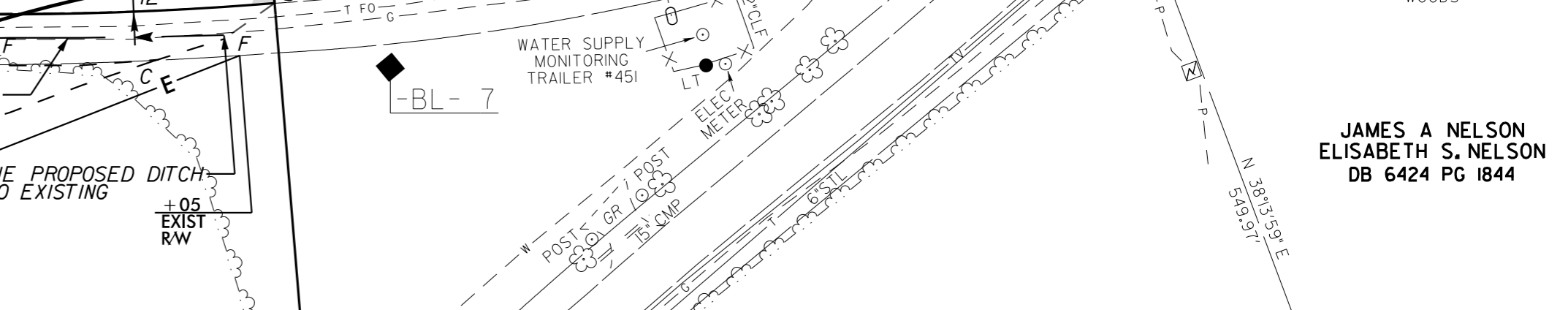
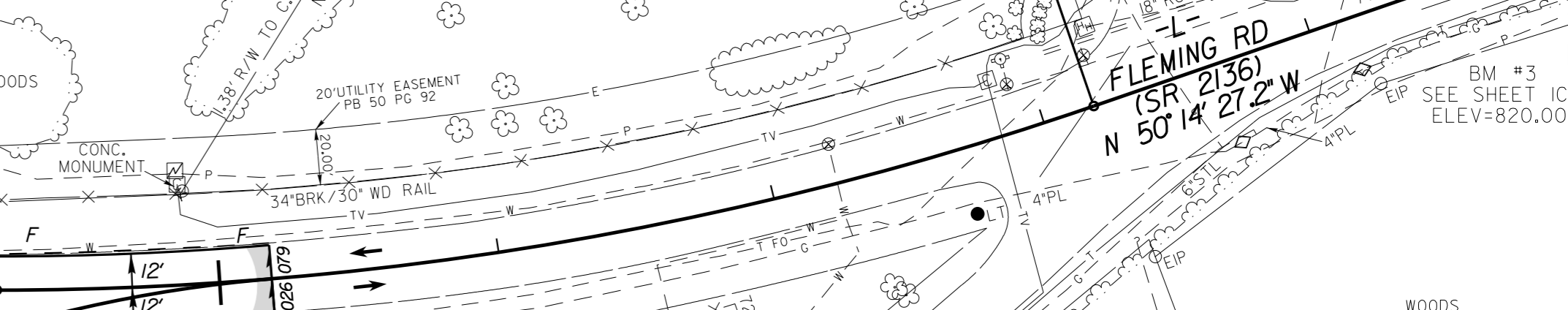
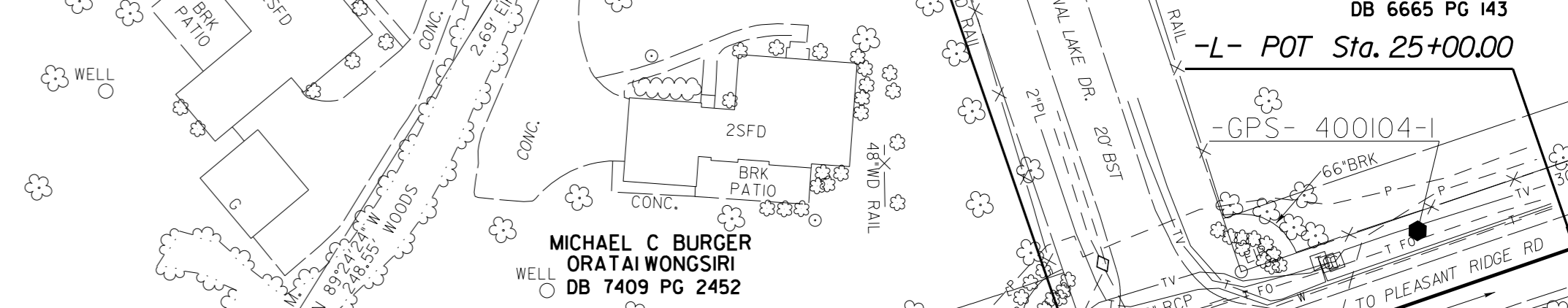
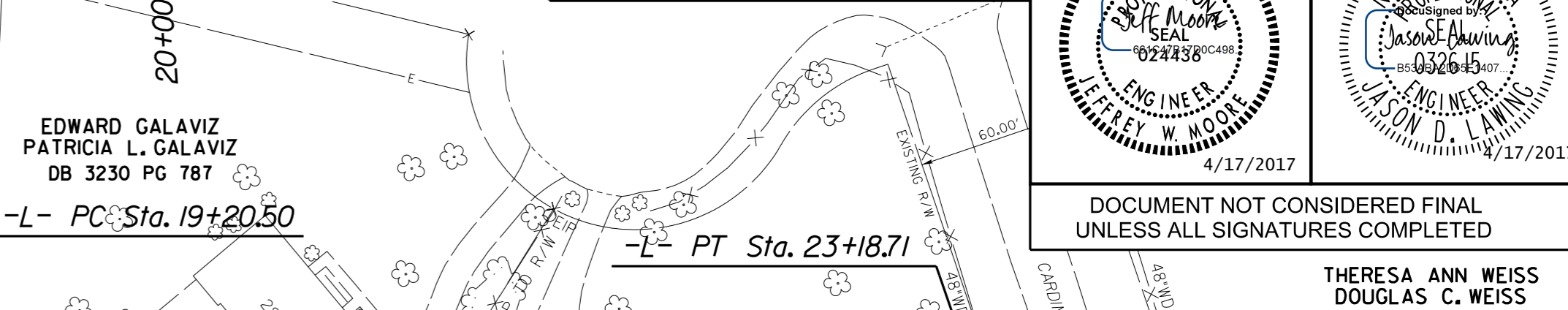
EDWARD GALAVIZ
PATRICIA L. GALAVIZ
DB 3230 PG 787

MICHAEL C BURGER
ORATAI WONGSIRI
DB 7409 PG 2452

THERESA ANN WEISS
DOUGLAS C. WEISS
DB 6665 PG 143

JAMES A NELSON
ELISABETH S. NELSON
DB 6424 PG 1844

RALPH W. GUFFEY
PATRICIA A. GUFFEY
(GUFFEY PROPERTY MANAGEMENT - TAX LISTING)
DB 4328 PG 1078



SEE SHEET 2B-1 FOR DETOUR
SEE SHEET 5 FOR -L- PROFILE
SEE SHEETS S-1 THRU S-19 FOR STRUCTURE PLANS

3/27/2017 K:\PAL_Roadway\01036275 - B-5345\Roadway\Proj\B5345_rdy_dsl104.dgn