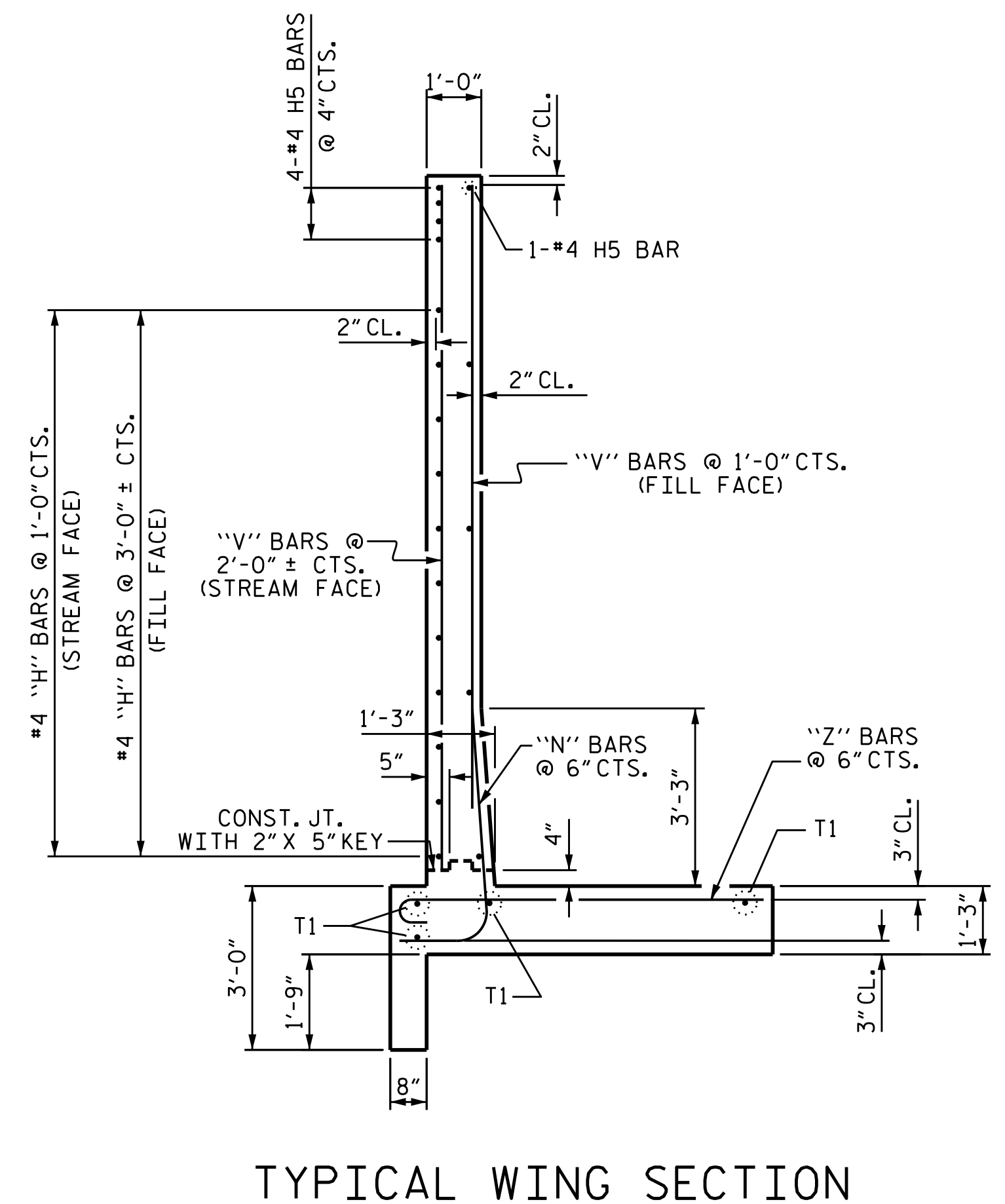
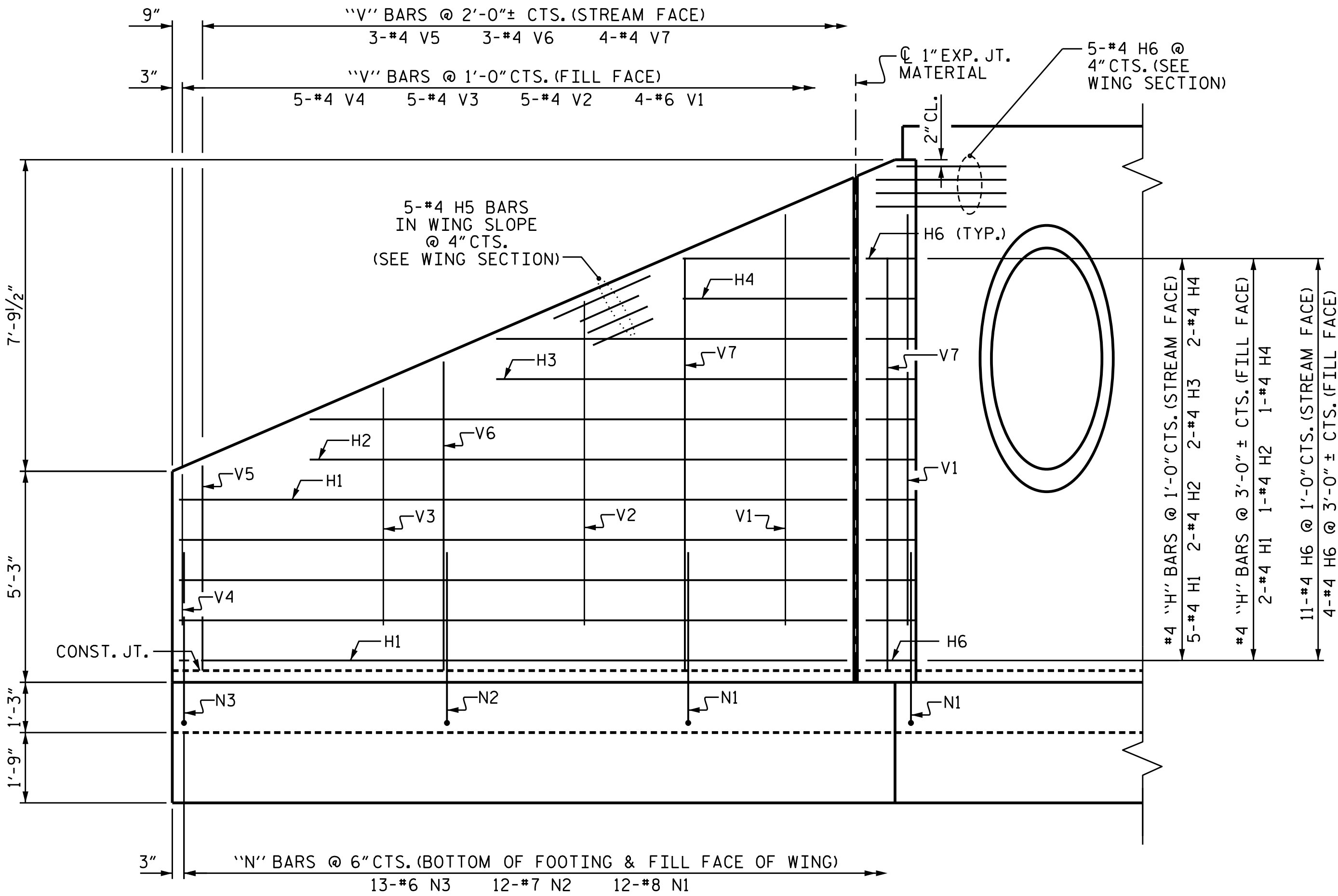
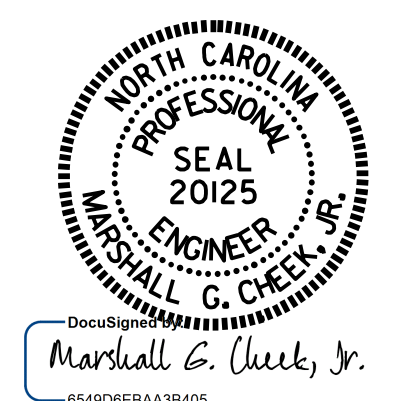


BILL OF MATERIAL					
BAR	NO.	SIZE	TYPE	LENGTH	WEIGHT
H1	7	#4	STR	16'- 7"	78
H2	3	#4	STR	13'- 4"	27
H3	2	#4	STR	8'- 8"	12
H4	3	#4	STR	3'-11"	8
H5	5	#4	STR	18'- 1"	60
H6	20	#4	1	3'- 3"	43
N1	12	#8	2	5'- 7"	179
N2	12	#7	2	5'- 7"	137
N3	13	#6	2	5'- 7"	109
S4	3	#6	STR	6'- 0"	27
T1	4	#5	STR	18'- 2"	76
V1	4	#6	STR	10'- 1"	61
V2	5	#4	STR	7'-11"	26
V3	5	#4	STR	5'- 10"	19
V4	5	#4	STR	3'- 9"	13
V5	3	#4	STR	4'-11"	10
V6	3	#4	STR	7'- 6"	15
V7	4	#4	STR	10'- 1"	27
Z1	7	#7	3	7'- 4"	105
Z2	10	#7	3	6'- 4"	129
Z3	10	#5	3	5'- 1"	53
Z4	10	#4	3	4'- 0"	27
REINFORCING STEEL FOR WING W1					LBS. 1241
CLASS A CONCRETE WING W1					C.Y. 15.8
CURTAIN WALL					C.Y. .8
TOTAL					C.Y. 16.6

NOTE: A 3 FOOT STRIP OF FILTER FABRIC SHALL BE ATTACHED TO THE FILL FACE OF THE WING COVERING THE ENTIRE LENGTH OF THE EXPANSION JOINT.



PROJECT NO. U-3633  
GASTON COUNTY  
 STATION: 54+22.00 -L-  
 SHEET 9 OF 13



STATE OF NORTH CAROLINA  
 DEPARTMENT OF TRANSPORTATION  
 RALEIGH  
**WING W1**  
 FOR  
**CONCRETE BOX CULVERT**  
 (LEFT EXTENSION)  
 H=12'-0" 90° SKEW SLOPE=2:1

DRAWN BY: H. A. LOCKLEAR DATE: 3-24-16  
 CHECKED BY: K. D. LAYNE DATE: 8/4/16  
 DESIGN ENGINEER OF RECORD: H. A. LOCKLEAR DATE: 11/16

\*\*\*\*\*SYSTEM\*\*\*\*\*  
 \*\*\*\*\*DCN\*\*\*\*\*  
 \*\*\*\*\*USERNAME\*\*\*\*\*

DOCUMENT NOT CONSIDERED  
 FINAL UNLESS ALL  
 SIGNATURES COMPLETED

REVISIONS						SHEET NO.
NO.	BY:	DATE:	NO.	BY:	DATE:	C-9
1			3			TOTAL SHEETS
2			4			13