

Prepared in the Office of:

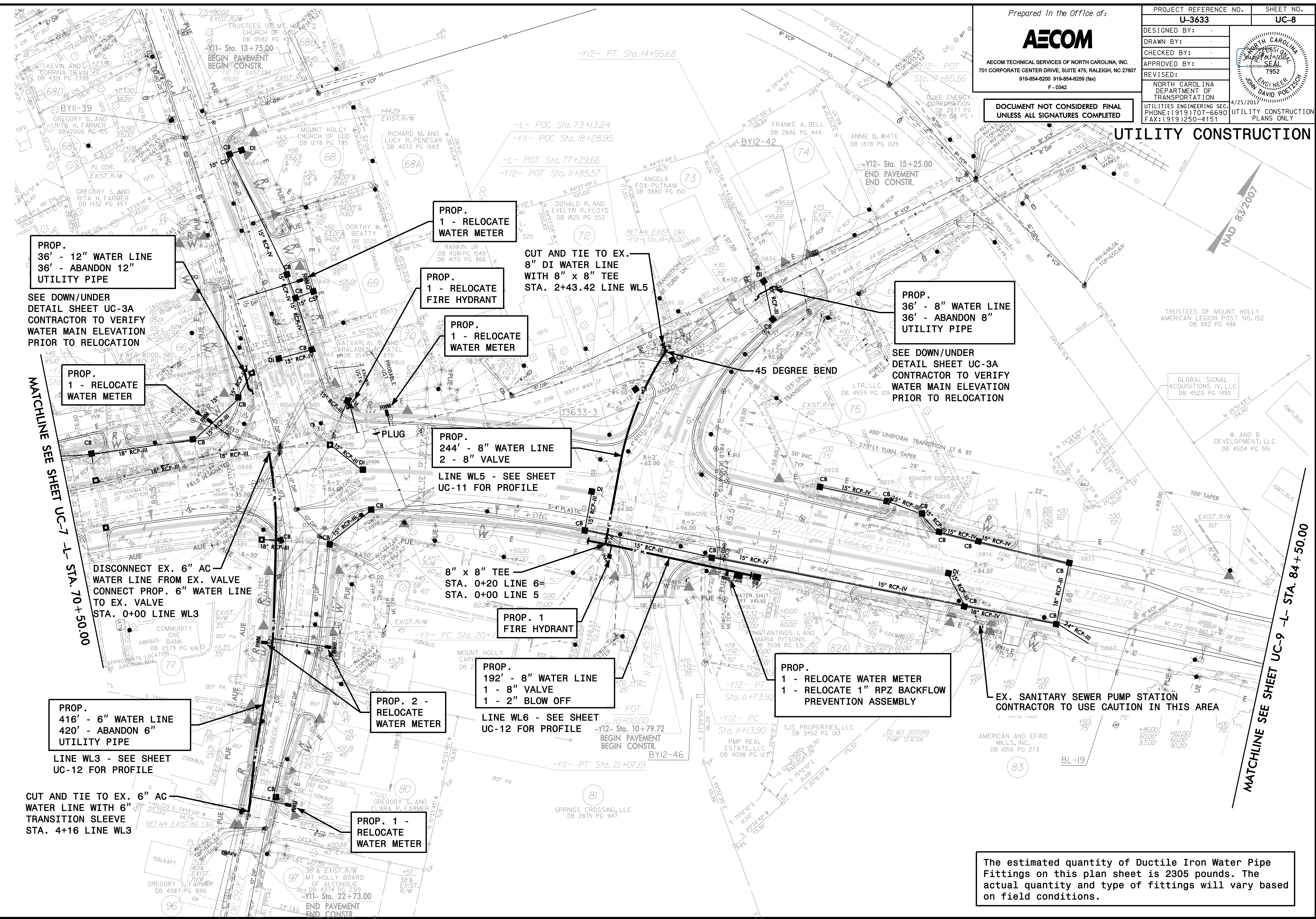


AECOM TECHNICAL SERVICES OF NORTH CAROLINA, INC.
701 CORPORATE CENTER DRIVE, SUITE 475, RALEIGH, NC 27607
919-854-6200 919-854-6259 (fax)
F-0342

PROJECT REFERENCE NO.	SHEET NO.
U-3633	UC-8
DESIGNED BY:	
DRAWN BY:	
CHECKED BY:	
APPROVED BY:	NORTH CAROLINA DEPARTMENT OF TRANSPORTATION
REVISED:	UTILITIES ENGINEERING SEC. PHONE: (919) 707-6690 FAX: (919) 250-4151
4/25/2017 UTILITY CONSTRUCTION PLANS ONLY	

DOCUMENT NOT CONSIDERED FINAL
UNLESS ALL SIGNATURES COMPLETED

UTILITY CONSTRUCTION



PROP.
36' - 12" WATER LINE
36' - ABANDON 12"
UTILITY PIPE

SEE DOWN/UNDER
DETAIL SHEET UC-3A
CONTRACTOR TO VERIFY
WATER MAIN ELEVATION
PRIOR TO RELOCATION

PROP.
1 - RELOCATE
WATER METER

MATCHLINE SEE SHEET UC-7 -L- STA. 70+50.00

DISCONNECT EX. 6" AC
WATER LINE FROM EX. VALVE
CONNECT PROP. 6" WATER LINE
TO EX. VALVE
STA. 0+00 LINE WL3

PROP.
416' - 6" WATER LINE
420' - ABANDON 6"
UTILITY PIPE

LINE WL3 - SEE SHEET
UC-12 FOR PROFILE

CUT AND TIE TO EX. 6" AC
WATER LINE WITH 6" AC
TRANSITION SLEEVE
STA. 4+16 LINE WL3

PROP.
1 - RELOCATE
WATER METER

PROP.
1 - RELOCATE
FIRE HYDRANT

PROP.
1 - RELOCATE
WATER METER

PROP.
244' - 8" WATER LINE
2 - 8" VALVE
LINE WL5 - SEE SHEET
UC-11 FOR PROFILE

PROP. 1
FIRE HYDRANT

PROP.
192' - 8" WATER LINE
1 - 8" VALVE
1 - 2" BLOW OFF
LINE WL6 - SEE SHEET
UC-12 FOR PROFILE

PROP. 2 -
RELOCATE
WATER METER

PROP. 1 -
RELOCATE
WATER METER

CUT AND TIE TO EX.
8" DI WATER LINE
WITH 8" x 8" TEE
STA. 2+43.42 LINE WL5

PROP.
36' - 8" WATER LINE
36' - ABANDON 8"
UTILITY PIPE

SEE DOWN/UNDER
DETAIL SHEET UC-3A
CONTRACTOR TO VERIFY
WATER MAIN ELEVATION
PRIOR TO RELOCATION

PROP.
1 - RELOCATE WATER METER
1 - RELOCATE 1" RPZ BACKFLOW
PREVENTION ASSEMBLY

EX. SANITARY SEWER PUMP STATION
CONTRACTOR TO USE CAUTION IN THIS AREA

The estimated quantity of Ductile Iron Water Pipe Fittings on this plan sheet is 2305 pounds. The actual quantity and type of fittings will vary based on field conditions.