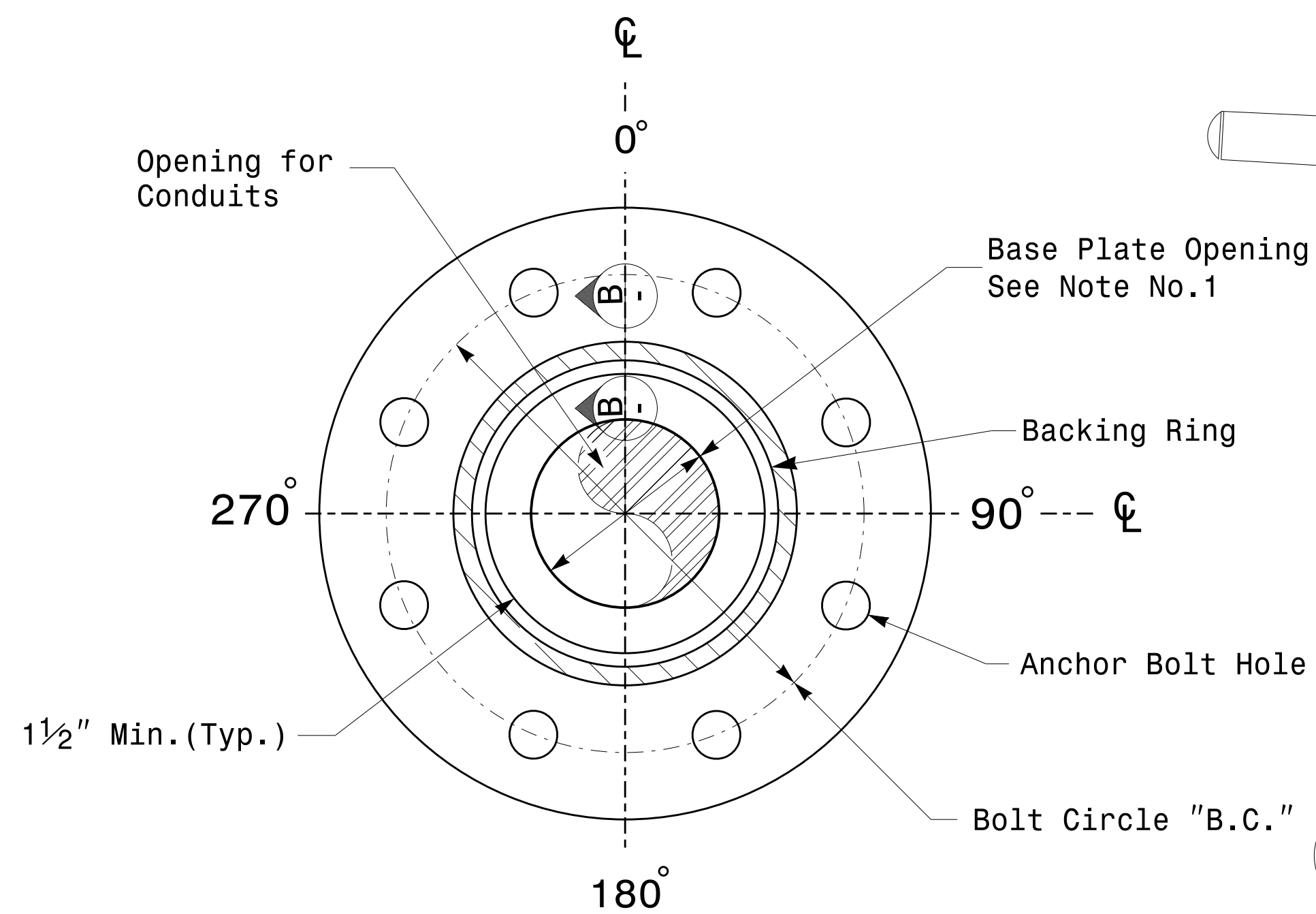
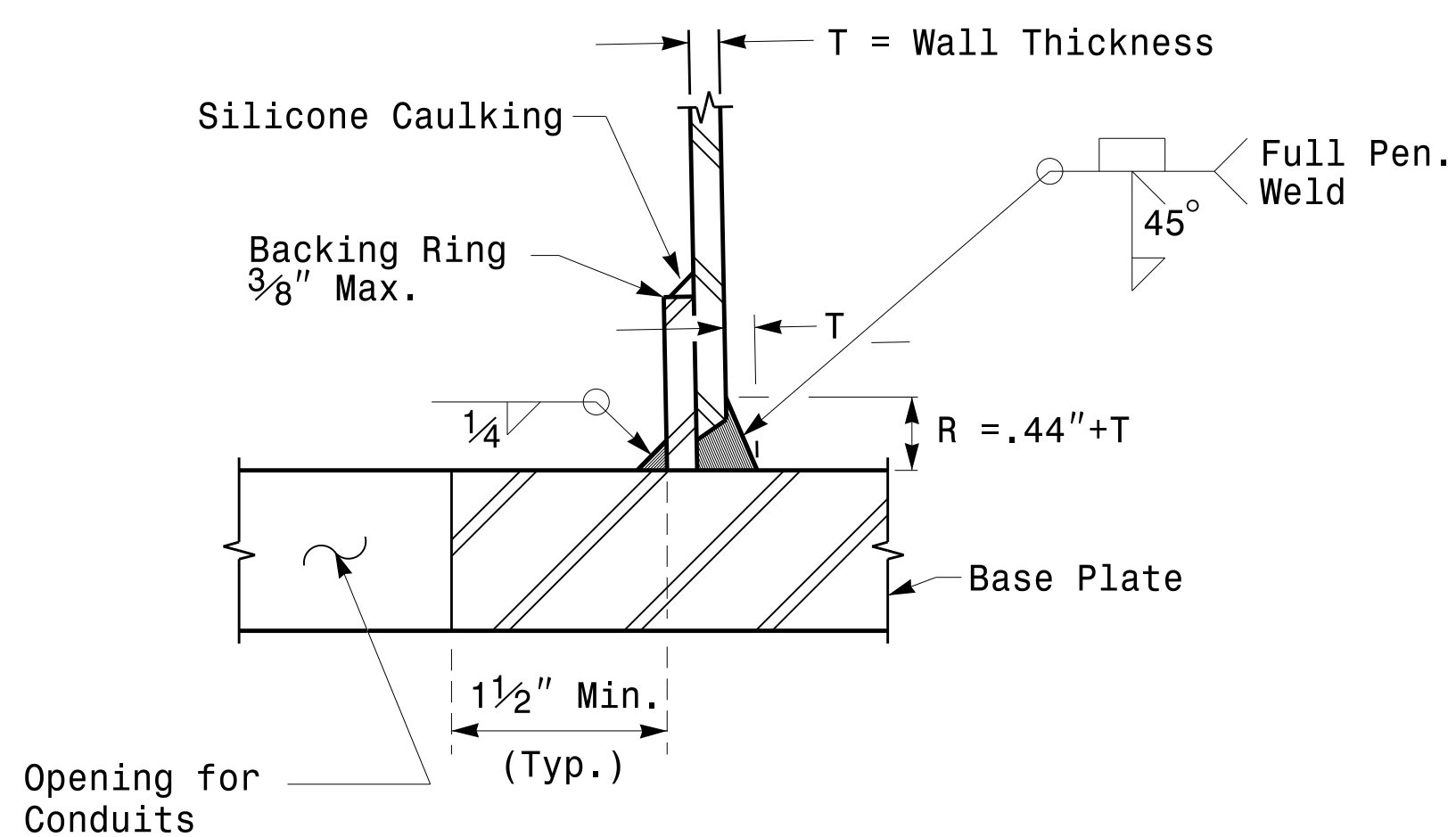


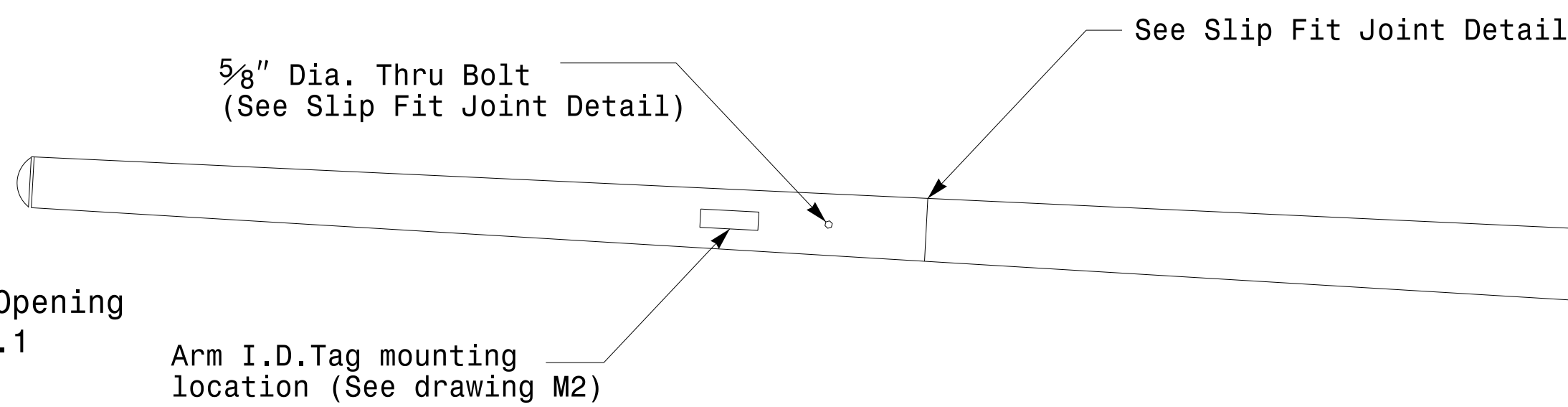
Note:
 1. Opening in pole base plate shall be equal to pole base inside diameter minus 3 1/2" but shall not be less than 8 1/2".



Section A-A
Pole Base Plate Details



Section B-B
 (Pole Attachment to Base Plate)
Full-Penetration Groove Weld Detail

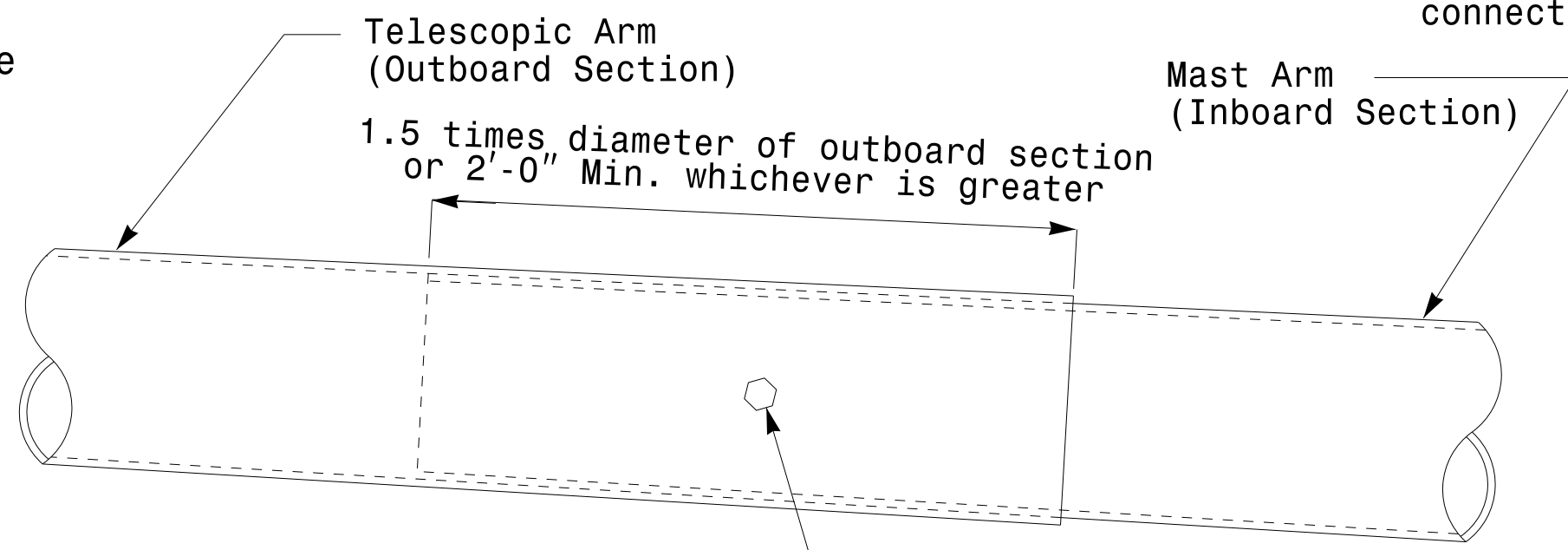


5/8" Dia. Thru Bolt
 (See Slip Fit Joint Detail)

See Slip Fit Joint Detail

Arm I.D.Tag mounting location (See drawing M2)

Arm I.D.Tag mounting location (See drawing M2)



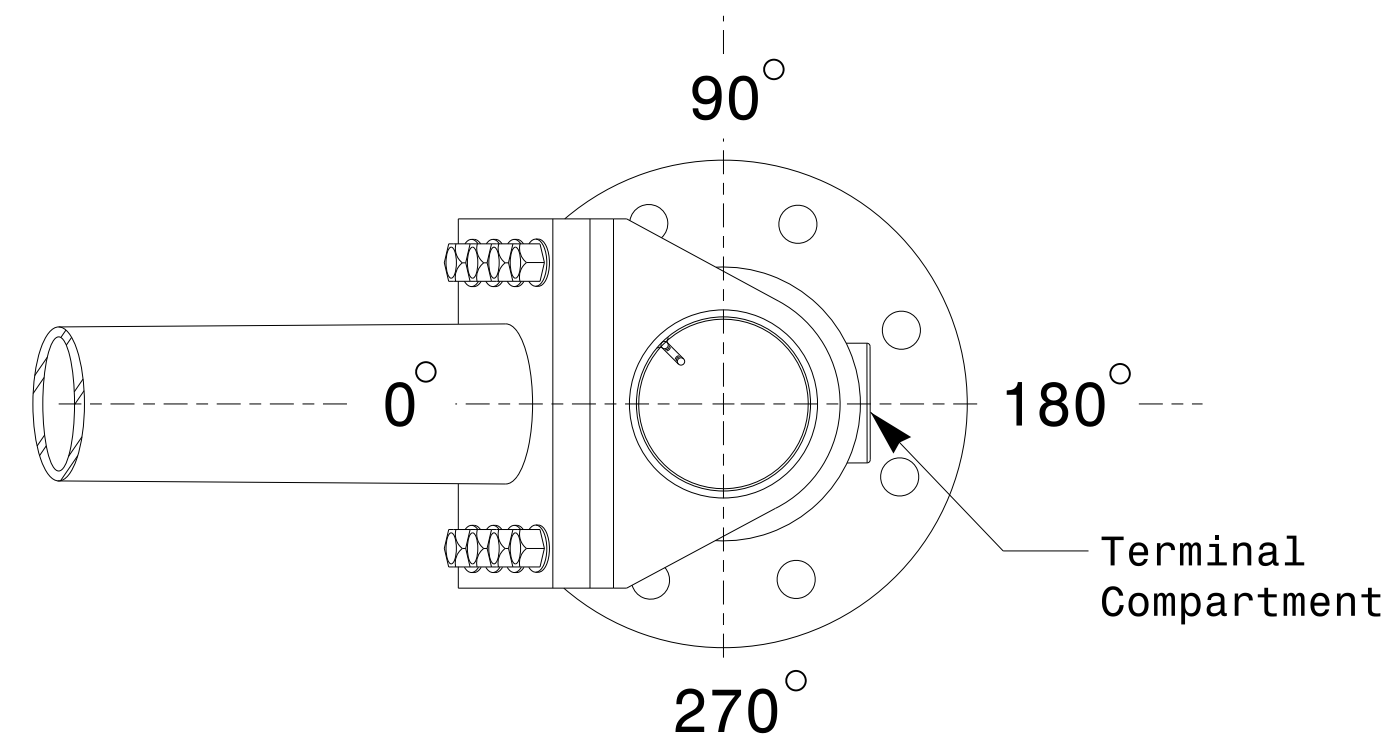
Telescopic Arm (Outboard Section)

Mast Arm (Inboard Section)

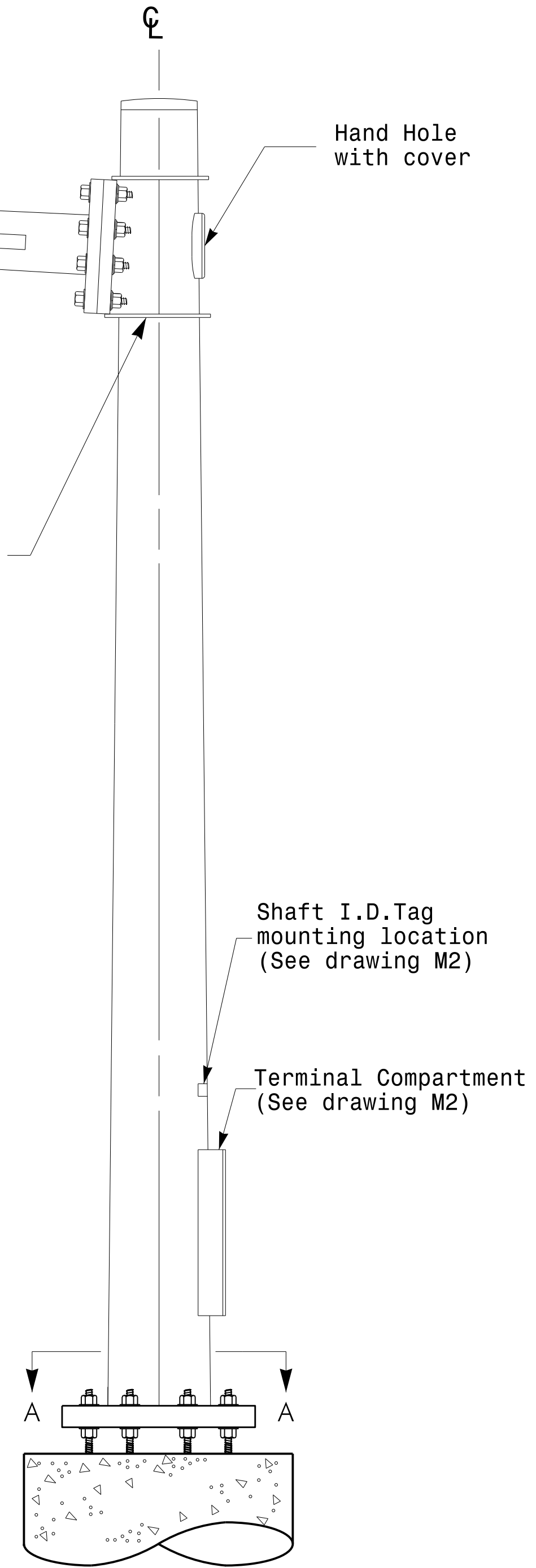
1.5 times diameter of outboard section or 2'-0" Min. whichever is greater

3/4" Factory Drilled Hole in Outboard Tube. Field Drill Inboard Tube. 5/8" Galvanized Thru Bolt with (2) Hex. Locknuts Each.

Slip Fit Joint Detail for Mast Arm



Mast Arm Radial Orientation



Mast Arm Pole

Prepared in the Offices of:

750 N. Greenfield Pkwy, Garner, NC 27529

SCALE: 0 NA NONE

Typical Fabrication Details For Mast Arm Poles			
PLAN DATE: FEBRUARY 2016	DESIGNED BY: K.C. DURIGON		
PREPARED BY: N. BITTING	REVIEWED BY: D.C. SARKAR		
REVISIONS	INIT.	DATE	

SEAL

DocuSigned by: *Dinesh C. Sarkar*

44E8E32E147E4C4...

2/17/2016

DATE

17-FEB-2016 16:05
 U:\CSG\W\15 Signal\sig\Design Section\Eastern Region\W\Sheets\2016\2014 Sig.M4 Std. Fabrication Detail\Mast Arm Poles.dgn
 3:01:02pm

Fabrication Details - Mast Arm Poles