

5/28/99

-L- NC 273 (SOUTH MAIN ST)

PROJECT REFERENCE NO. U-3633	SHEET NO. 12
ROADWAY DESIGN ENGINEER SEAL 022007 Andrew Jason Moore	HYDRAULICS ENGINEER SEAL 022100 STEPHEN R. MORGAN
DocuSigned by: Andrew Jason Moore 4/17/2017	DocuSigned by: Stephen R. Morgan 4/13/2017

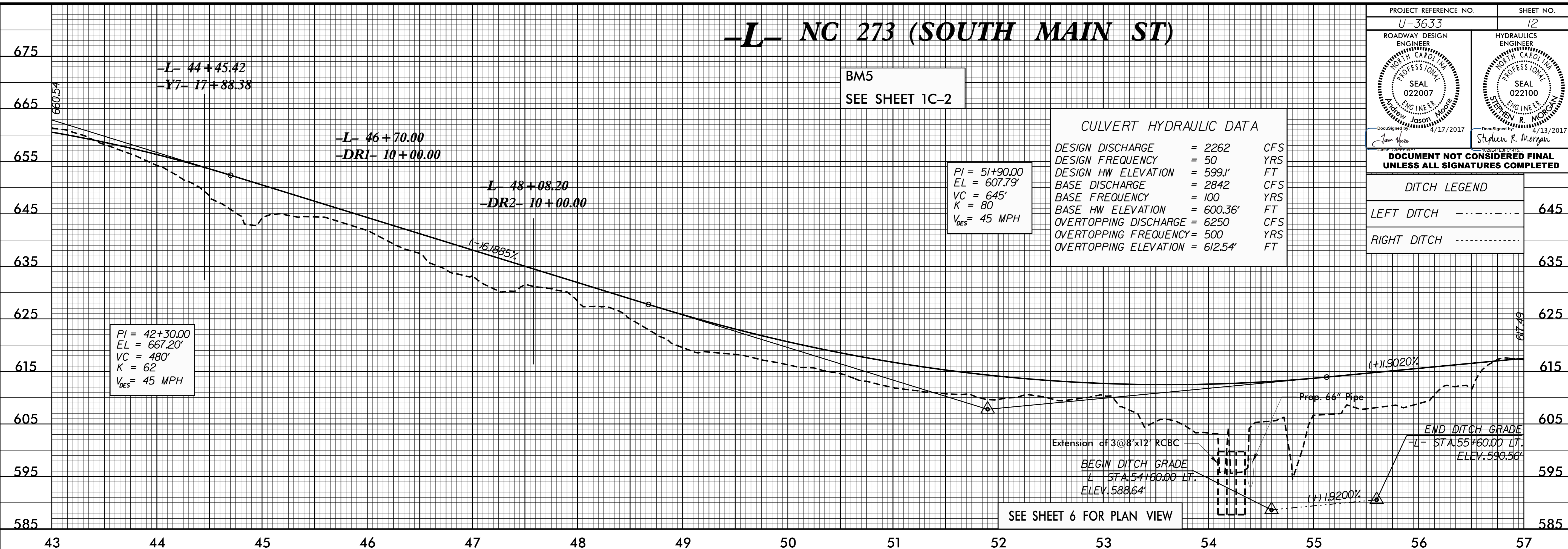
**DOCUMENT NOT CONSIDERED FINAL
UNLESS ALL SIGNATURES COMPLETED**

DITCH LEGEND	
LEFT DITCH	----- 645
RIGHT DITCH	----- 635

CULVERT HYDRAULIC DATA		
DESIGN DISCHARGE	= 2262	CFS
DESIGN FREQUENCY	= 50	YRS
DESIGN HW ELEVATION	= 599.1'	FT
BASE DISCHARGE	= 2842	CFS
BASE FREQUENCY	= 100	YRS
BASE HW ELEVATION	= 600.36'	FT
OVERTOPPING DISCHARGE	= 6250	CFS
OVERTOPPING FREQUENCY	= 500	YRS
OVERTOPPING ELEVATION	= 612.54'	FT

PI = 51+90.00
EL = 607.79'
VC = 645'
K = 80
V_{DES} = 45 MPH

PI = 42+30.00
EL = 667.20'
VC = 480'
K = 62
V_{DES} = 45 MPH



SEE SHEET 6 FOR PLAN VIEW

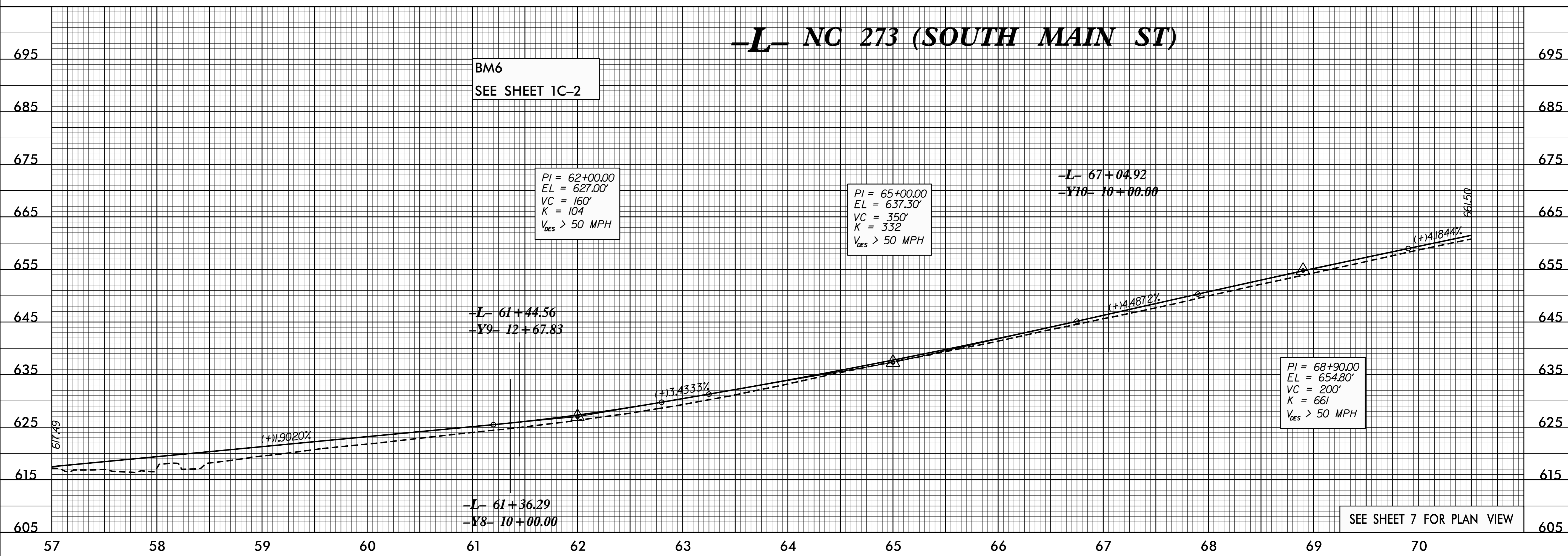
-L- NC 273 (SOUTH MAIN ST)

BM6
SEE SHEET 1C-2

PI = 62+00.00
EL = 627.00'
VC = 160'
K = 104
V_{DES} > 50 MPH

PI = 65+00.00
EL = 637.30'
VC = 350'
K = 332
V_{DES} > 50 MPH

PI = 68+90.00
EL = 654.80'
VC = 200'
K = 661
V_{DES} > 50 MPH



SEE SHEET 7 FOR PLAN VIEW

13-APR-2017 11:16 U:\3633_Pdu.pfl.dgn