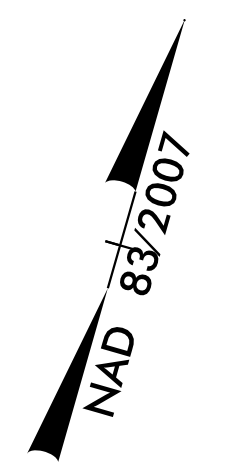


PROJECT REFERENCE NO. <i>U-3633</i>	SHEET NO. 9
RW SHEET NO.	
ROADWAY DESIGN ENGINEER SEAL 022007 <i>Jason Jones</i>	HYDRAULICS ENGINEER SEAL 022100 <i>Stephen R. Morgan</i>
DocuSigned by: <i>Jason Jones</i> 4/17/2017	DocuSigned by: <i>Stephen R. Morgan</i> 4/13/2017
DOCUMENT NOT CONSIDERED FINAL UNLESS ALL SIGNATURES COMPLETED	

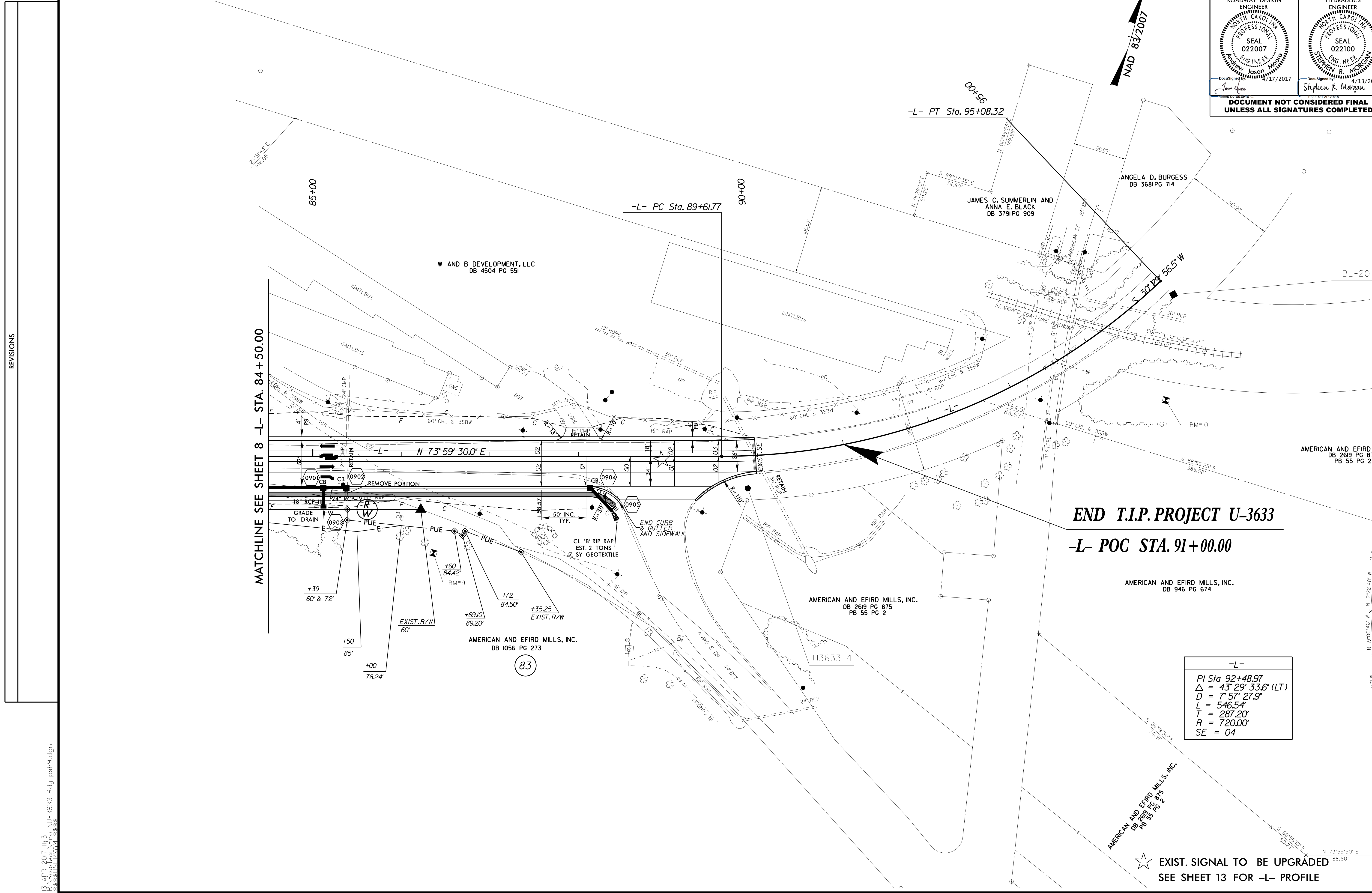


MATCHLINE SEE SHEET 8 -L- STA. 84+50.00

END T.I.P. PROJECT U-3633
-L- POC STA. 91+00.00

-L-
PI Sta 92+48.97
$\Delta = 43^{\circ}29'33.6"$ (LT)
$D = 7^{\circ}57'27.9"$
$L = 546.54'$
$T = 287.20'$
$R = 720.00'$
$SE = 04$

★ EXIST. SIGNAL TO BE UPGRADED
SEE SHEET 13 FOR -L- PROFILE



REVISIONS

8/17/99

P3-APR-2017 11:53
S:\PROJECTS\U-3633-Rd\U-3633-Rd.dgn