

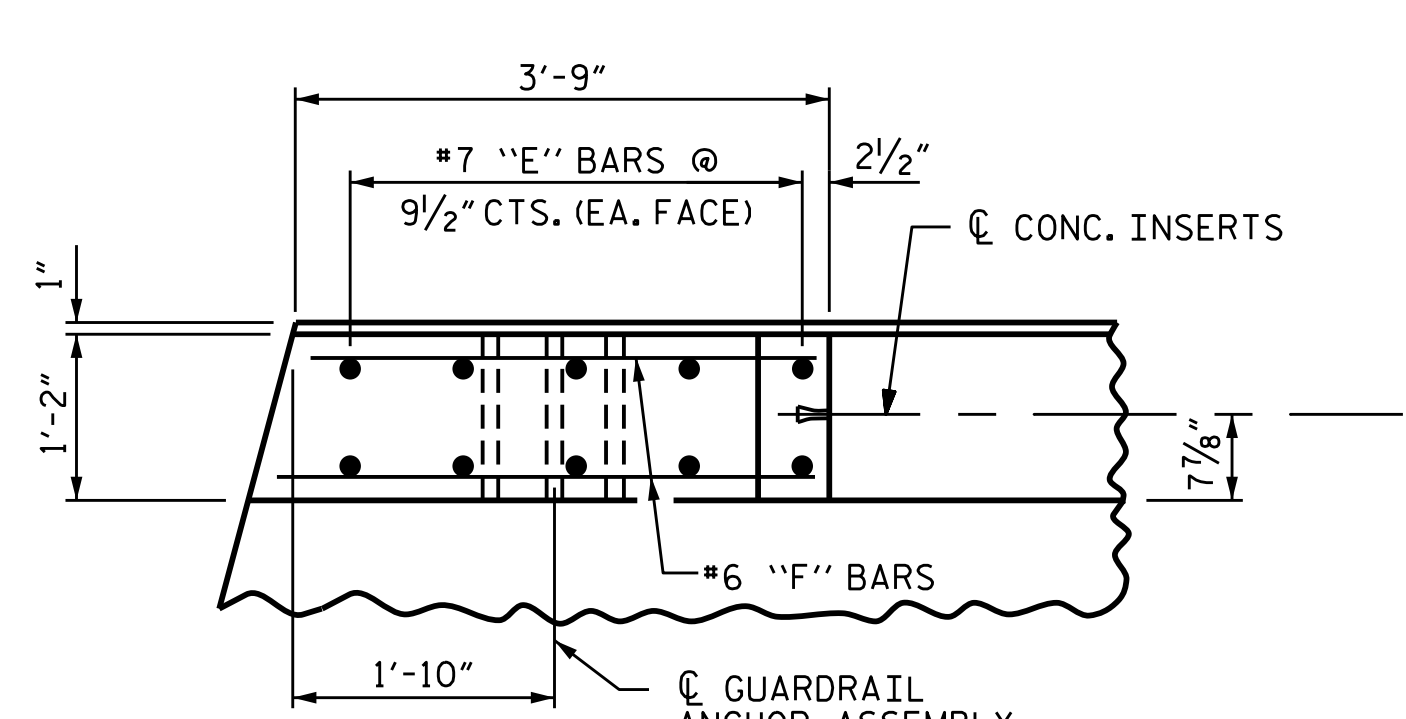
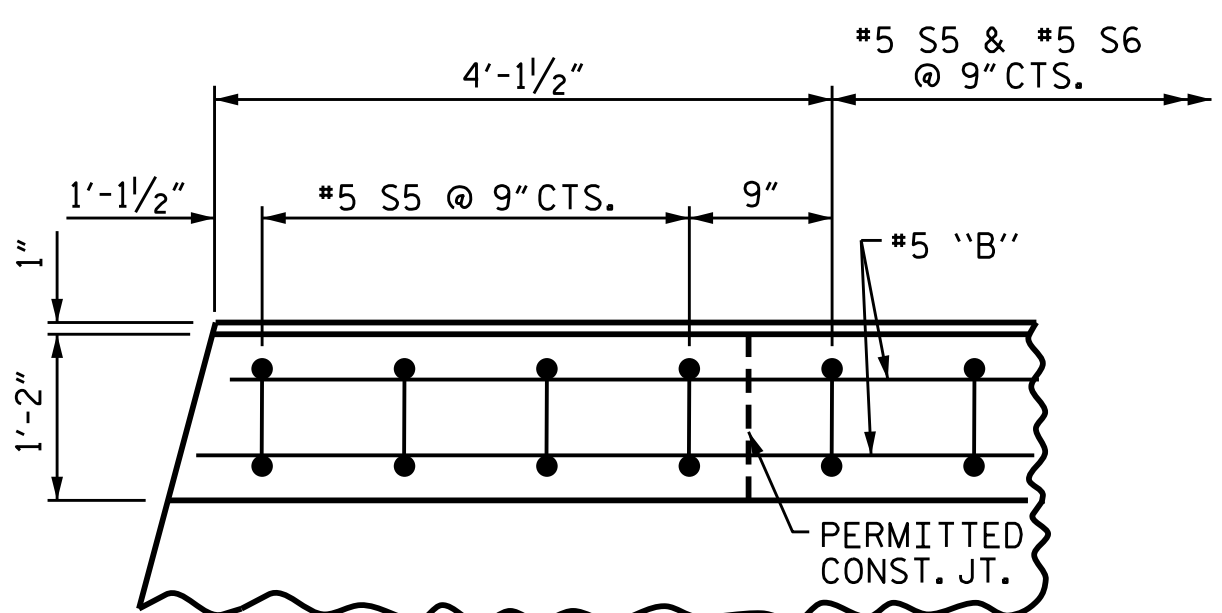
BAR TYPE		BILL OF MATERIAL FOR PARAPET & END POSTS						
BAR	BARS PER SPAN	SPAN A	SPAN B	TOTAL NO.	SIZE	TYPE	LENGTH	WEIGHT
*B7			64	64	#5	STR	16'-7"	1107
*B10	128			128	#5	STR	12'-10"	1713
*E1	4	4		8	#7	STR	3'-1"	50
*E2	4	4		8	#7	STR	3'-7"	59
*E3	4	4		8	#7	STR	4'-0"	65
*E4	4	4		8	#7	STR	4'-5"	72
*E5	4	4		8	#7	STR	4'-9"	78
*F1	4	4		8	#6	STR	2'-0"	24
*F2	2	2		4	#6	STR	3'-5"	21
*F3	2	2		4	#6	STR	3'-9"	23
*F4	2	2		4	#6	STR	3'-6"	21
*F5	2	2		4	#6	STR	3'-10"	23
*S6	226	146		372	#5	10	5'-8"	2199
* EPOXY COATED REINFORCING STEEL							LBS.	5455
CLASS AA CONCRETE							CU.YDS.	38.5
TOTAL LIN. FT. OF CONCRETE PARAPET								300.00



PLAN OF PARAPET

NOTES:

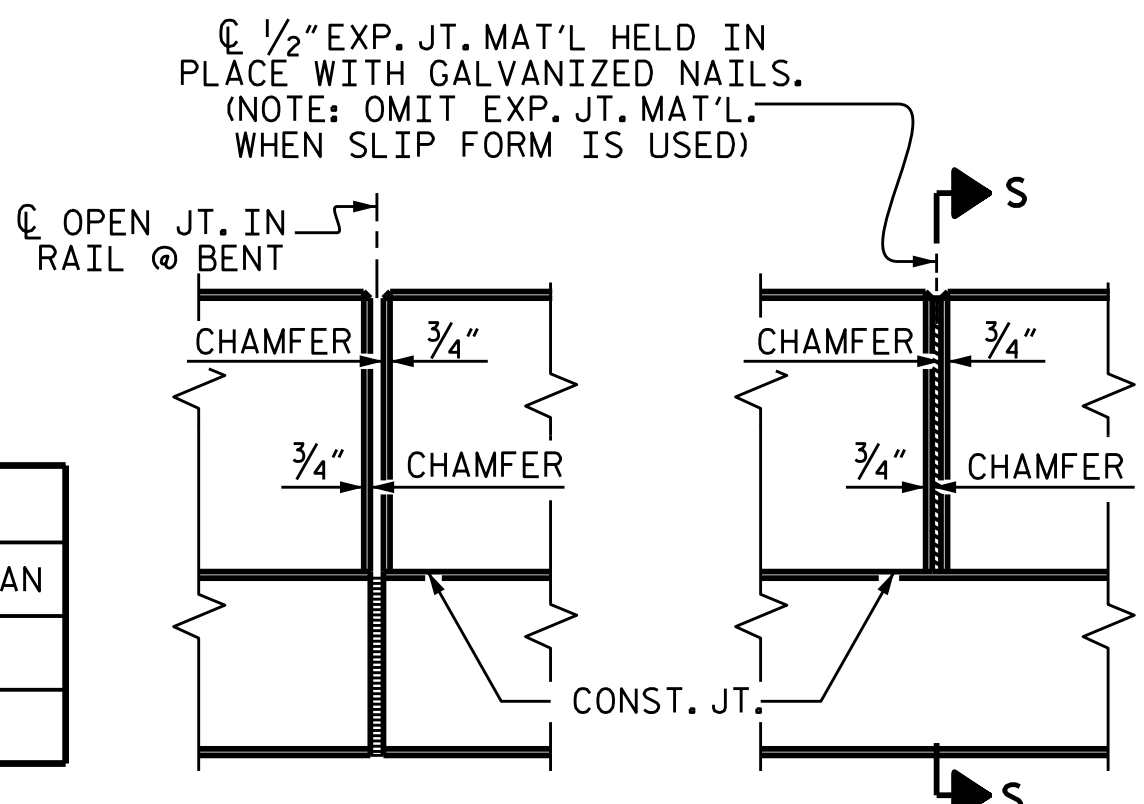
ALL REINFORCING STEEL IN THE PARAPETS AND END POSTS SHALL BE EPOXY COATED.
 #5 S5 BARS ARE INCLUDED IN THE BILL OF MATERIAL FOR BOX BEAM UNITS.



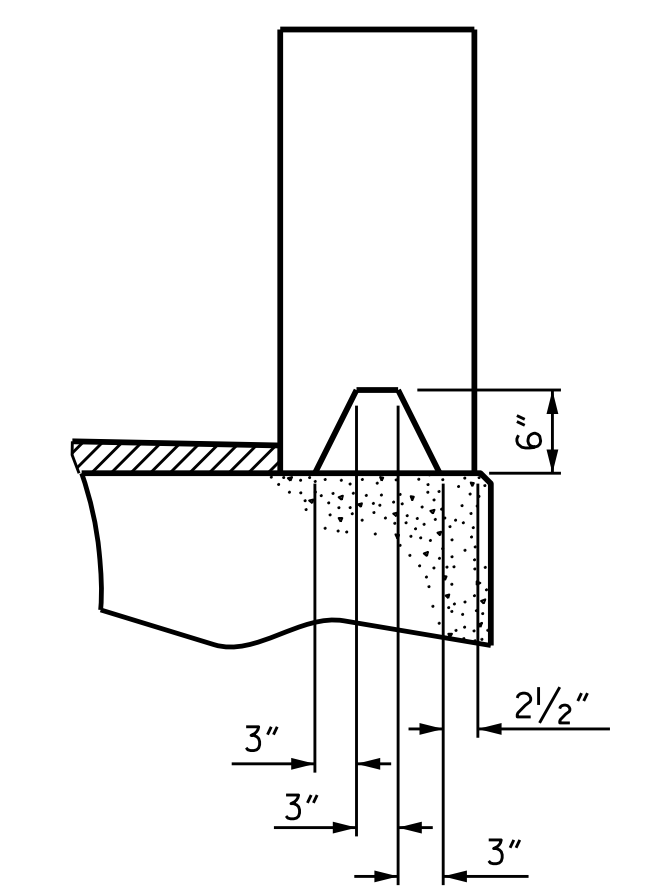
PLAN OF PARAPET AT END BENT 1, END BENT 2 SIMILAR

PLAN OF END POST

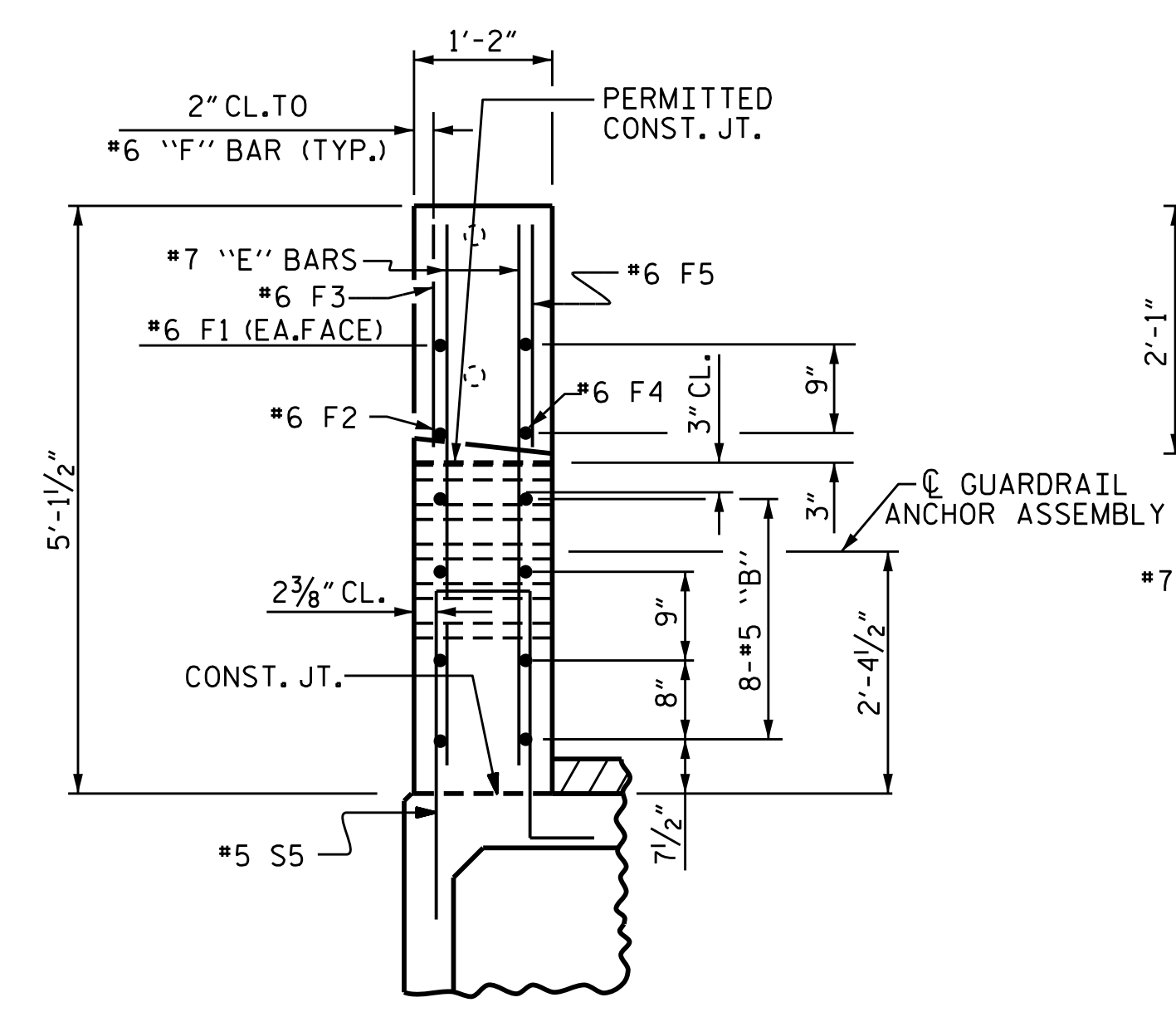
GUTTERLINE CONCRETE THICKNESS & PARAPET HEIGHT		
	CONCRETE OVERLAY THICKNESS @ MID-SPAN	PARAPET HEIGHT @ MID-SPAN
SPAN A (90' UNIT)	3 1/2"	2'-9 1/2"
SPAN B (60' UNIT)	4 5/16"	2'-10 5/16"



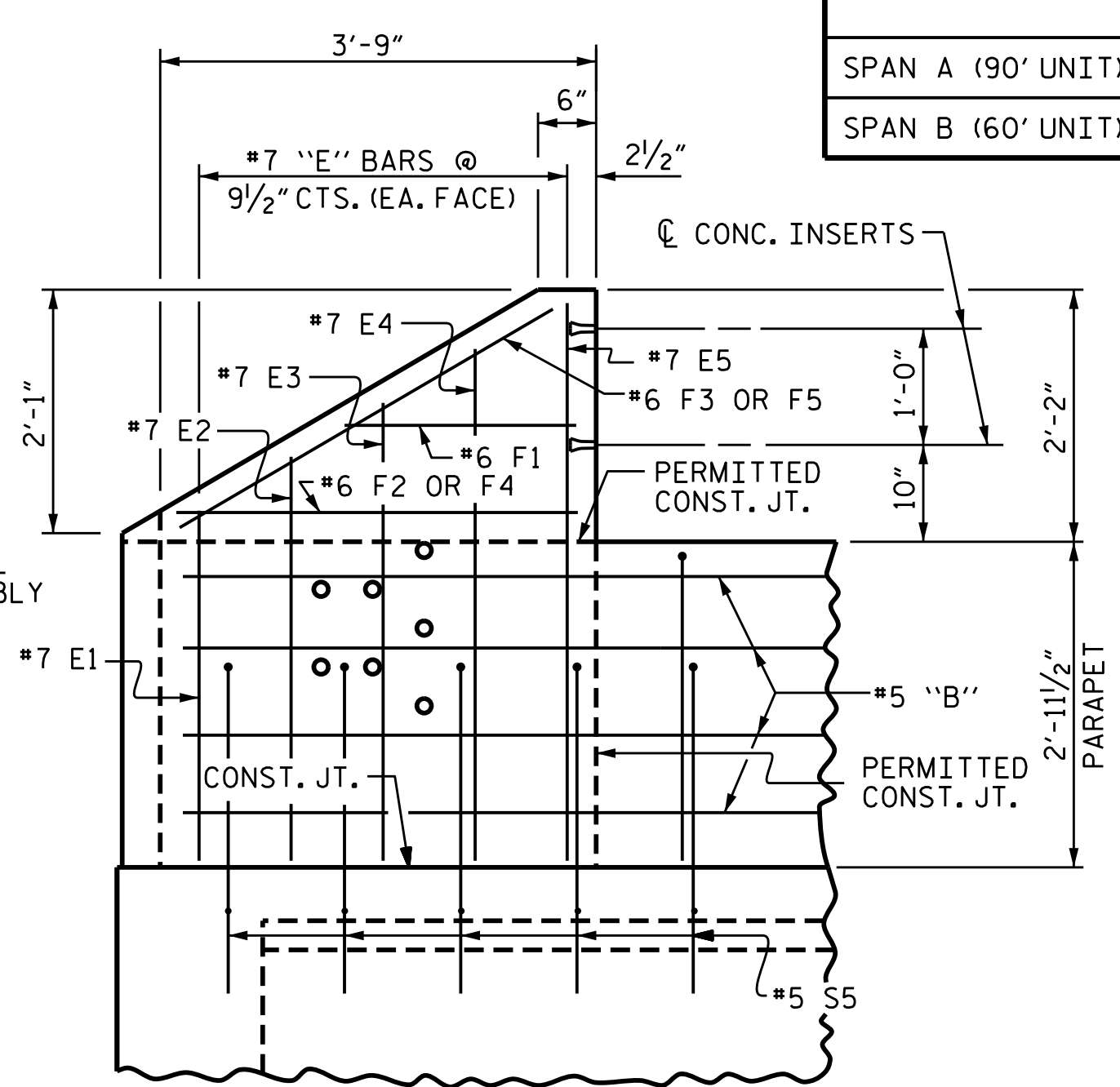
ELEVATION AT EXPANSION JOINTS



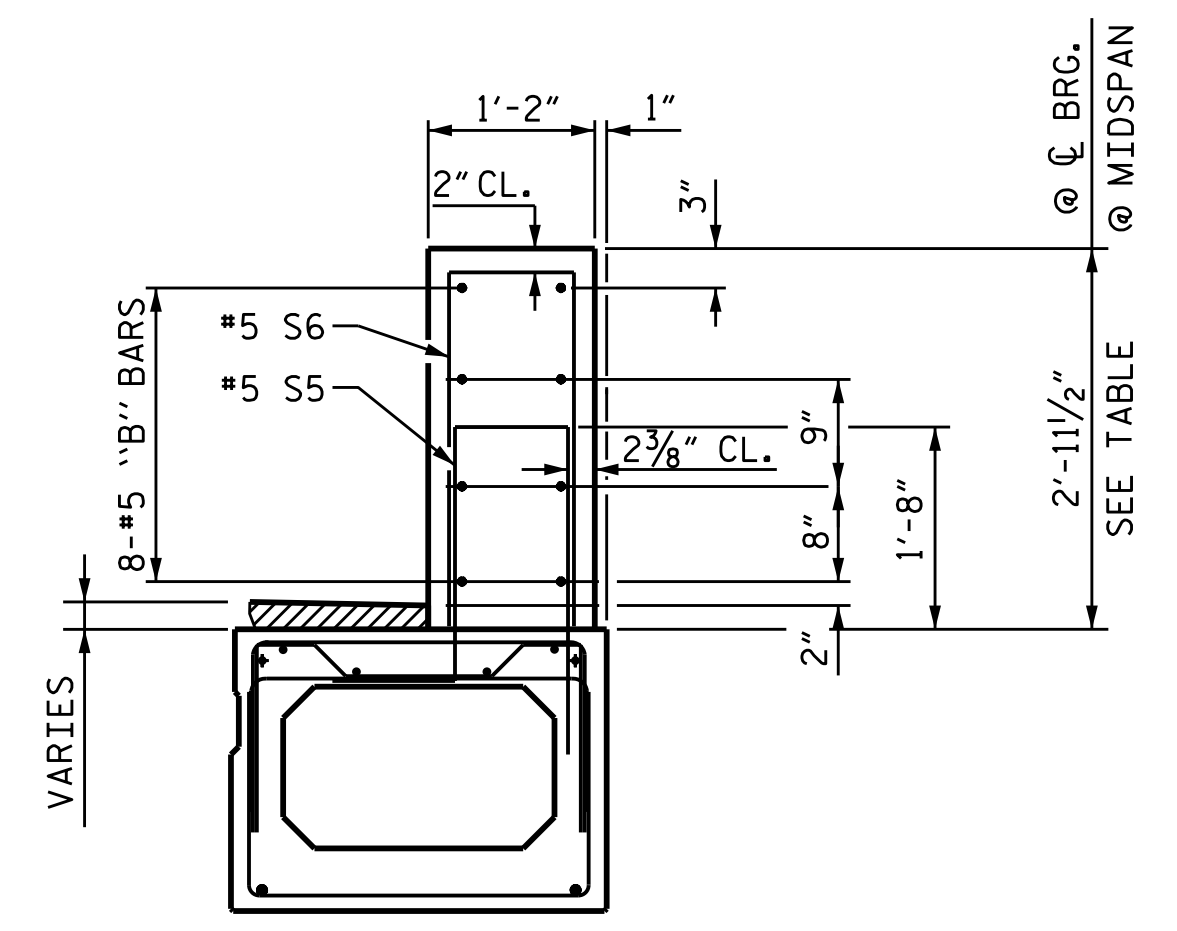
SECTION S-S AT DAM IN OPEN JOINT (THIS IS TO BE USED ONLY WHEN SLIP FORM IS USED)



END VIEW



ELEVATION

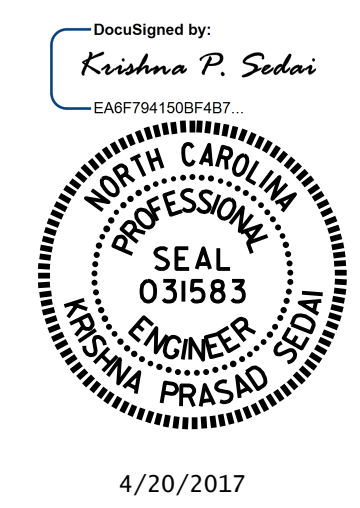


TWO BAR METAL RAIL PARAPET SECTION

DRAWN BY : H. B. DESAI DATE : 10/12/16
 CHECKED BY : T. L. AVERETTE DATE : 2/15/17
 DESIGN ENGINEER OF RECORD : K. P. SEDAİ DATE : 2/24/17

DOCUMENT NOT CONSIDERED FINAL UNLESS ALL SIGNATURES COMPLETED

PROJECT NO. B-5165
 DAVIDSON COUNTY
 STATION: 22+12.00 -L-



STATE OF NORTH CAROLINA
 DEPARTMENT OF TRANSPORTATION
 RALEIGH
 CONCRETE PARAPET AND END POST DETAILS

REVISIONS						SHEET NO.
NO.	BY:	DATE:	NO.	BY:	DATE:	S-15
1			3			TOTAL SHEETS 24
2			4			