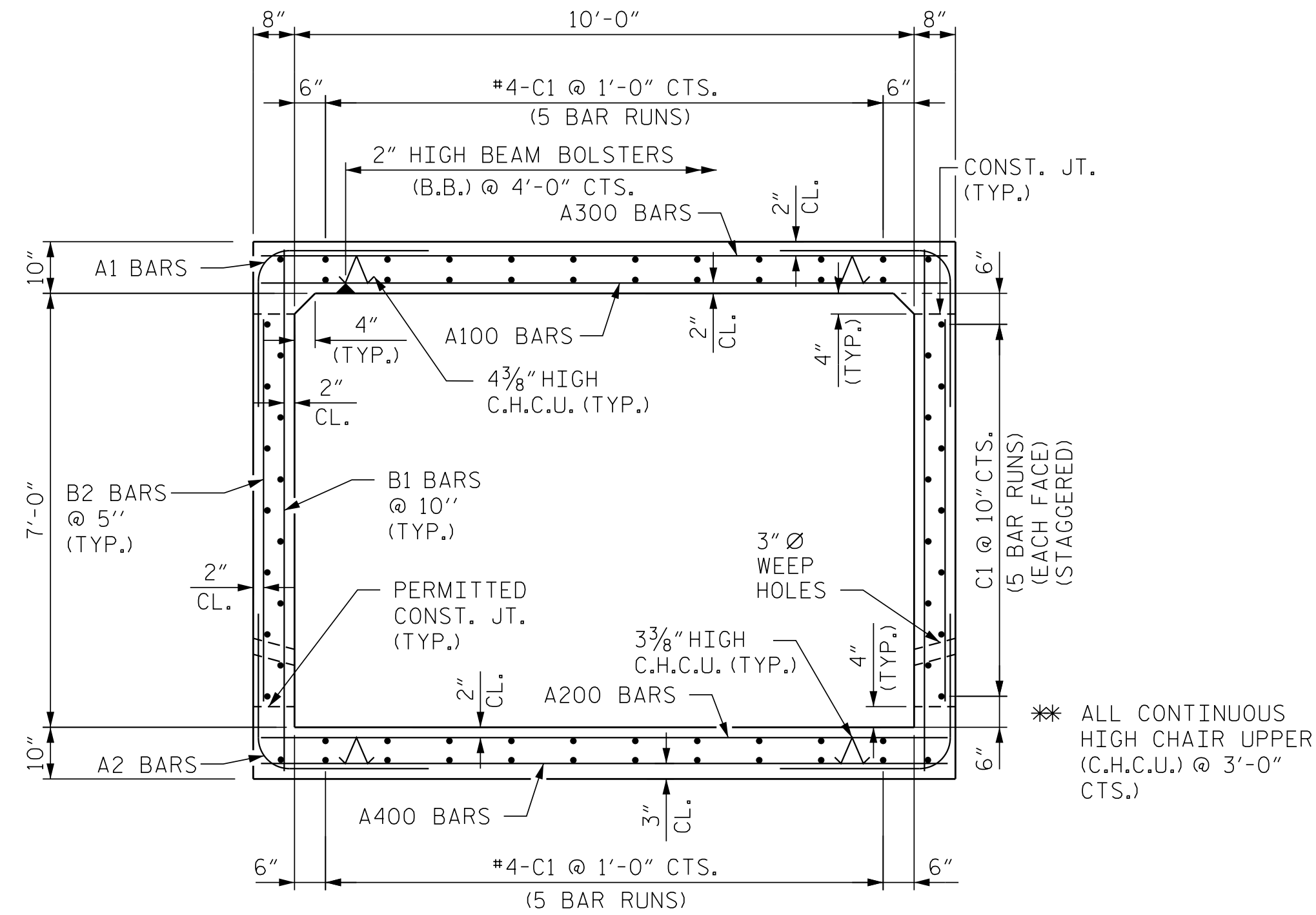
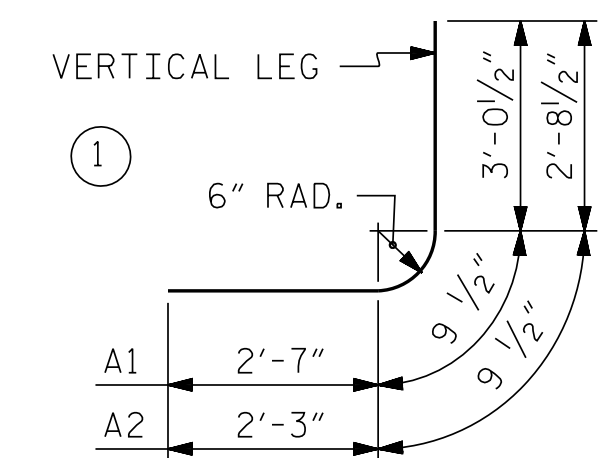


REINFORCING STEEL SCHEDULE											
BAR	NO.	SIZE	TYPE	LENGTH	WEIGHT	BAR	NO.	SIZE	TYPE	LENGTH	WEIGHT
A1	316	#4	(1)	6'-5"	1354	A300	152	#6	STR	11'-0"	2512
A2	316	#4	(1)	5'-9"	1214	A301	2	#6	STR	9'-4"	29
A100	303	#6	STR	11'-0"	5007	A302	2	#6	STR	7'-7"	23
A101	2	#6	STR	10'-2"	31	A303	2	#6	STR	5'-11"	18
A102	2	#6	STR	9'-4"	29	A304	2	#6	STR	4'-2"	13
A103	2	#6	STR	8'-5"	26	A305	2	#6	STR	2'-6"	8
A104	2	#6	STR	7'-7"	23	A306	2	#6	STR	0'-9"	3
A105	2	#6	STR	6'-9"	21	A400	152	#6	STR	11'-0"	2512
A106	2	#6	STR	5'-11"	18	A401	2	#6	STR	9'-4"	29
A107	2	#6	STR	5'-0"	16	A402	2	#6	STR	7'-7"	23
A108	2	#6	STR	4'-2"	13	A403	2	#6	STR	5'-11"	18
A109	2	#6	STR	3'-4"	11	A404	2	#6	STR	4'-2"	13
A110	2	#6	STR	2'-6"	8	A405	2	#6	STR	2'-6"	8
A111	2	#6	STR	1'-7"	5	A406	2	#6	STR	0'-9"	3
A112	2	#6	STR	0'-9"	3	B1	316	#4	STR	8'-5"	1756
A200	303	#6	STR	11'-0"	5007	B2	630	#4	STR	6'-2"	5836
A201	2	#6	STR	10'-2"	31	C1	350	#4	STR	27'-5"	6334
A202	2	#6	STR	9'-4"	29	D1	13	#6	STR	1'-5"	28
A203	2	#6	STR	8'-5"	26	D2	8	#6	STR	2'-5"	30
A204	2	#6	STR	7'-7"	23	G1	8	#5	STR	12'-3"	102
A205	2	#6	STR	6'-9"	21	S1	12	#7	STR	12'-3"	301
A206	2	#6	STR	5'-11"	18						
A207	2	#6	STR	5'-0"	16						
A208	2	#6	STR	4'-2"	13						
A209	2	#6	STR	3'-4"	11						
A210	2	#6	STR	2'-6"	8						
A211	2	#6	STR	1'-7"	5						
A212	2	#6	STR	0'-9"	3						
TOTAL EPOXY COATED REINFORCING STEEL										32589	

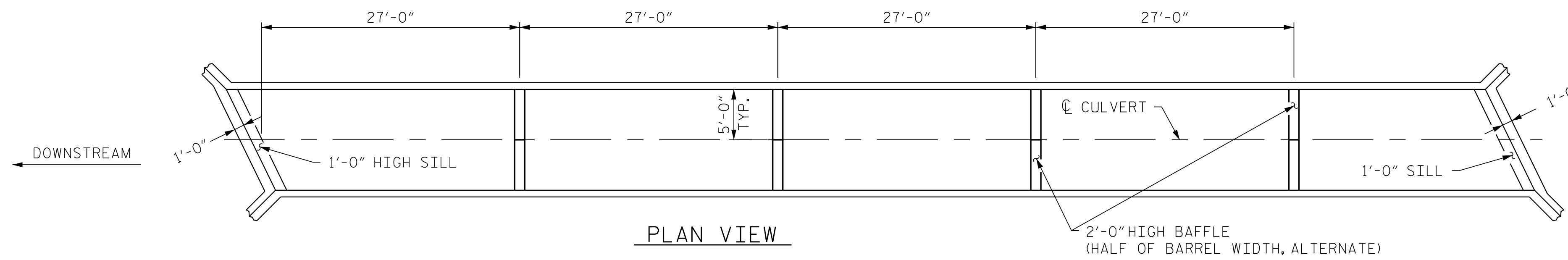


RIGHT ANGLE SECTION OF BARREL
(THERE ARE 70 "C" BARS IN SECTION OF BARREL)

SPLICE LENGTH CHART	
SIZE	SPLICE LENGTH
#4	1'-5"
#5	1'-9"
#6	2'-3"
#7	3'-1"
#8	4'-1"

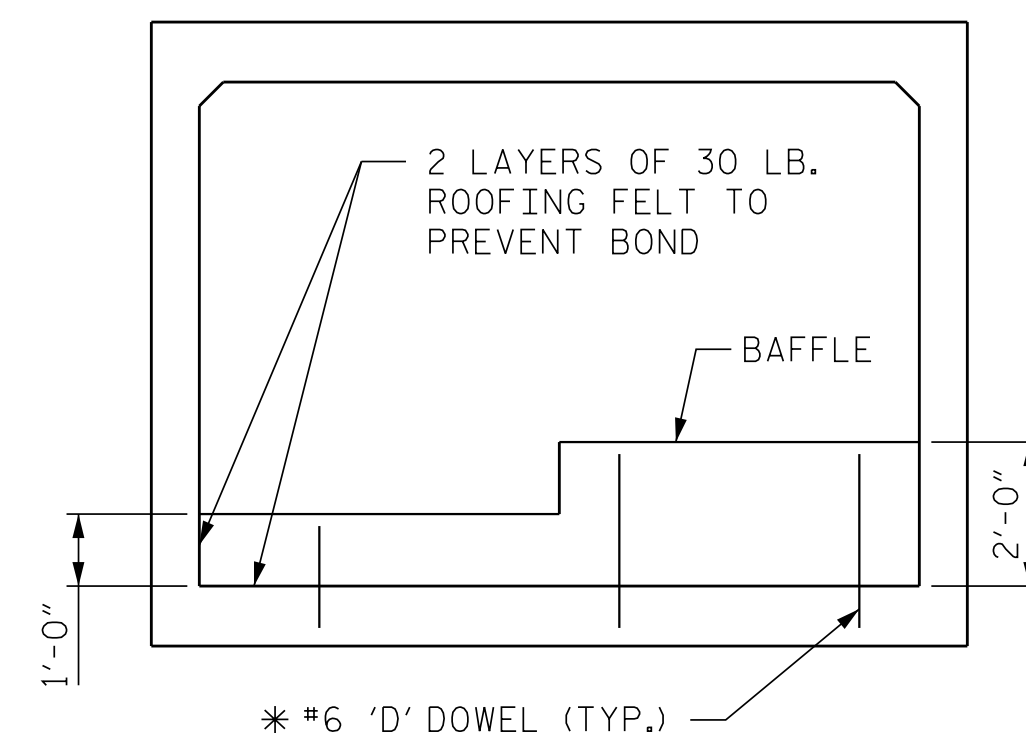


BAR TYPE
BAR DIMENSIONS ARE OUT TO OUT

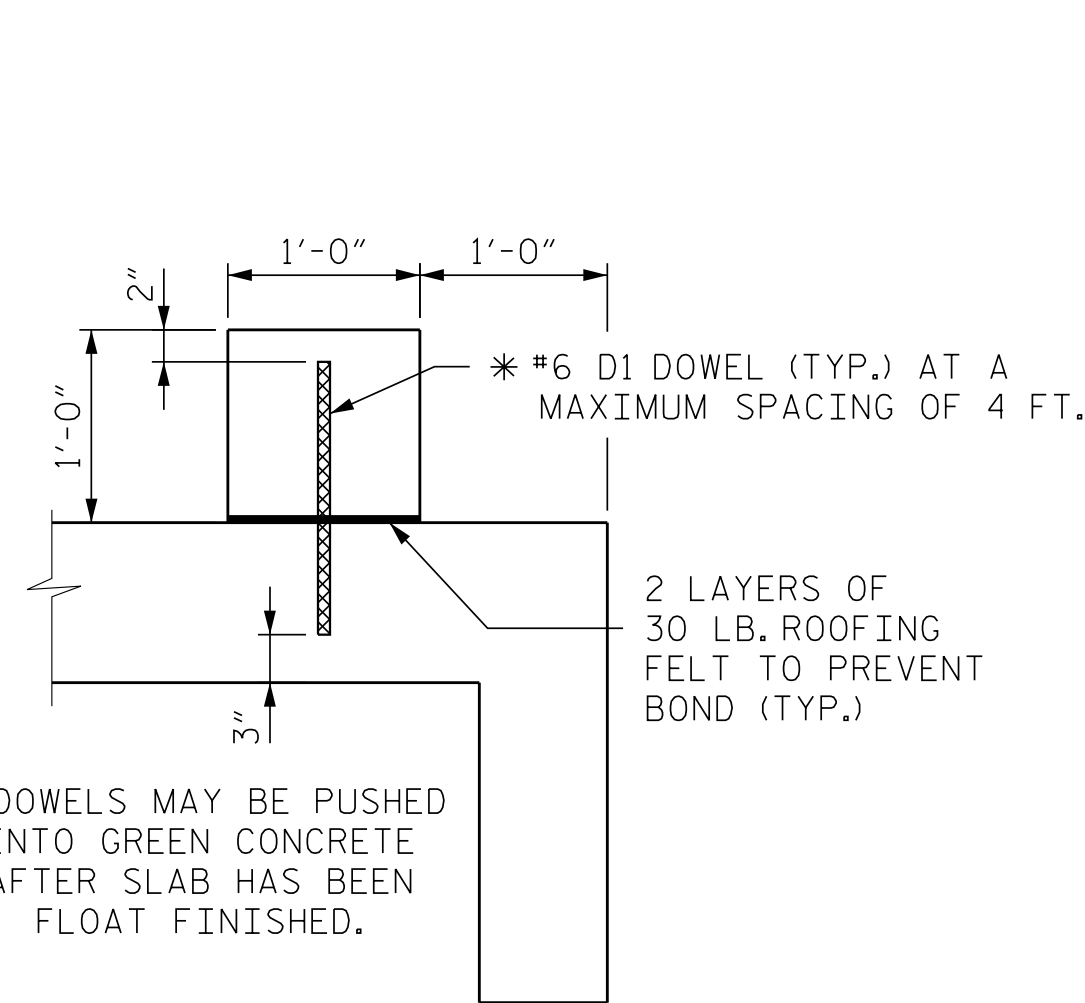


PLAN VIEW

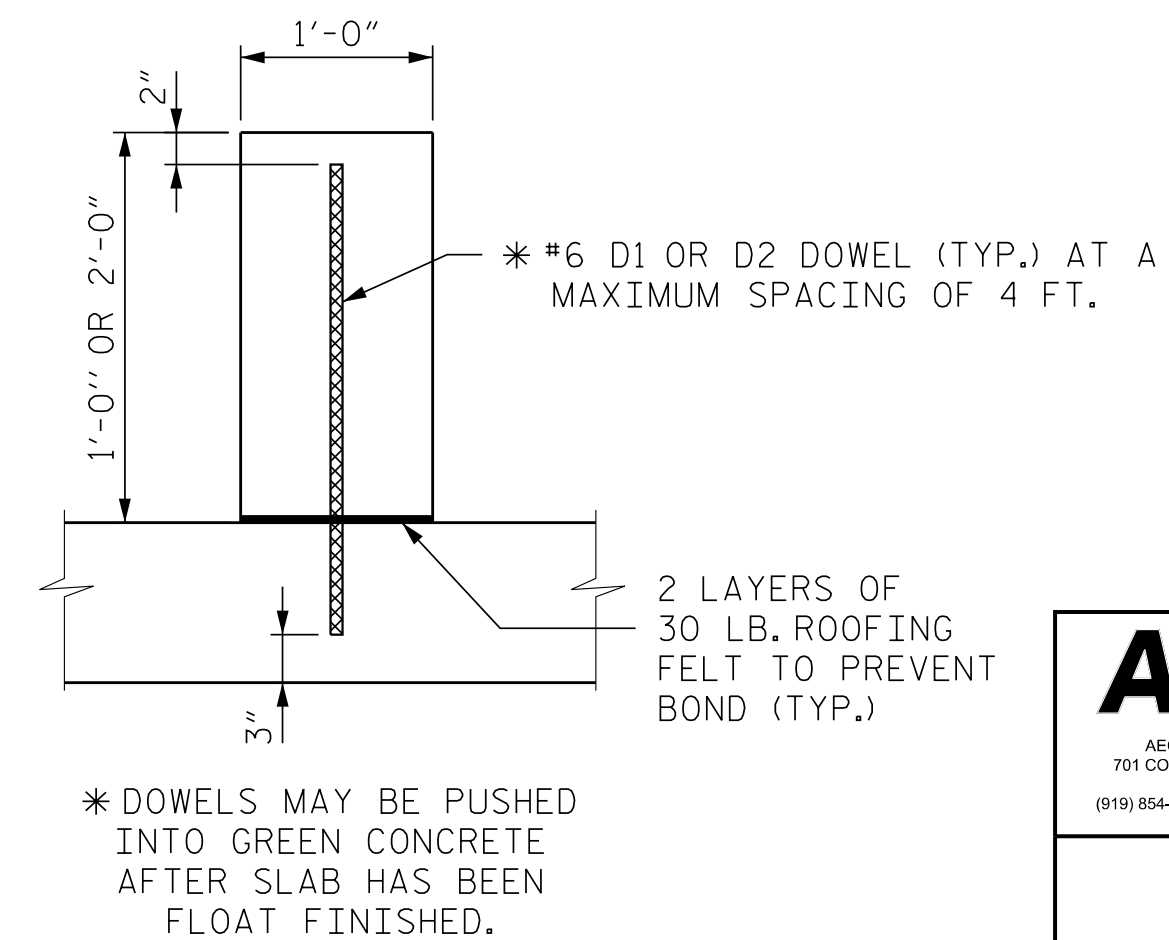
NOTE:
BACKFILL TO SILL HEIGHT WITH NATIVE BED MATERIAL EXCAVATED FROM STREAM BED DURING CULVERT EXCAVATION. ONLY MATERIAL EXCAVATED FROM STREAM BED MAY BE USED TO LINE THE CULVERT BARREL. NATIVE MATERIAL IS SUBJECT TO APPROVAL BY THE ENGINEER AND MAY BE SUBJECT TO PERMIT CONDITIONS.



ELEVATION



SECTION THROUGH SILL



SECTION THROUGH BAFFLE

CULVERT SILL AND BAFFLE DETAILS

PROJECT NO. R-5516
 CRAVEN COUNTY
 STATION: 26+94.23 -Y09A-

SHEET 4 OF 6

AECOM
 AECOM TECHNICAL SERVICES, INC.
 701 CORPORATE CENTER DRIVE, SUITE 475
 RALEIGH, NC 27607
 (919) 854-6200 www.aecom.com
 AECOM License No. F-0342

4/12/2017
 NORTH CAROLINA PROFESSIONAL SEAL
 030474
 JOHN C. MORRISON
 ENGINEER

STATE OF NORTH CAROLINA
 DEPARTMENT OF TRANSPORTATION
 RALEIGH
 SINGLE 10FT. X 7FT.
 CONCRETE BOX CULVERT
 116° SKEW

REVISIONS						SHEET NO.
NO.	BY:	DATE:	NO.	BY:	DATE:	C2-4
1			3			TOTAL SHEETS
2			4			6

DRAWN BY : NKB DATE : 03/16
 CHECKED BY : JCM DATE : 03/16
 DESIGN E.O.R. : JCM DATE : 05/16

DOCUMENT NOT CONSIDERED
 FINAL UNLESS ALL
 SIGNATURES COMPLETED

DATE: 4/7/2017
 TIME: 2:36:22 PM

USER: ncr1593
 DN: /c=US/e=jcm@aecom.com/ou=Engineering/ou=Structural/ou=Culverts/ou=C2-4-1/RSB6_SEC.dgn