

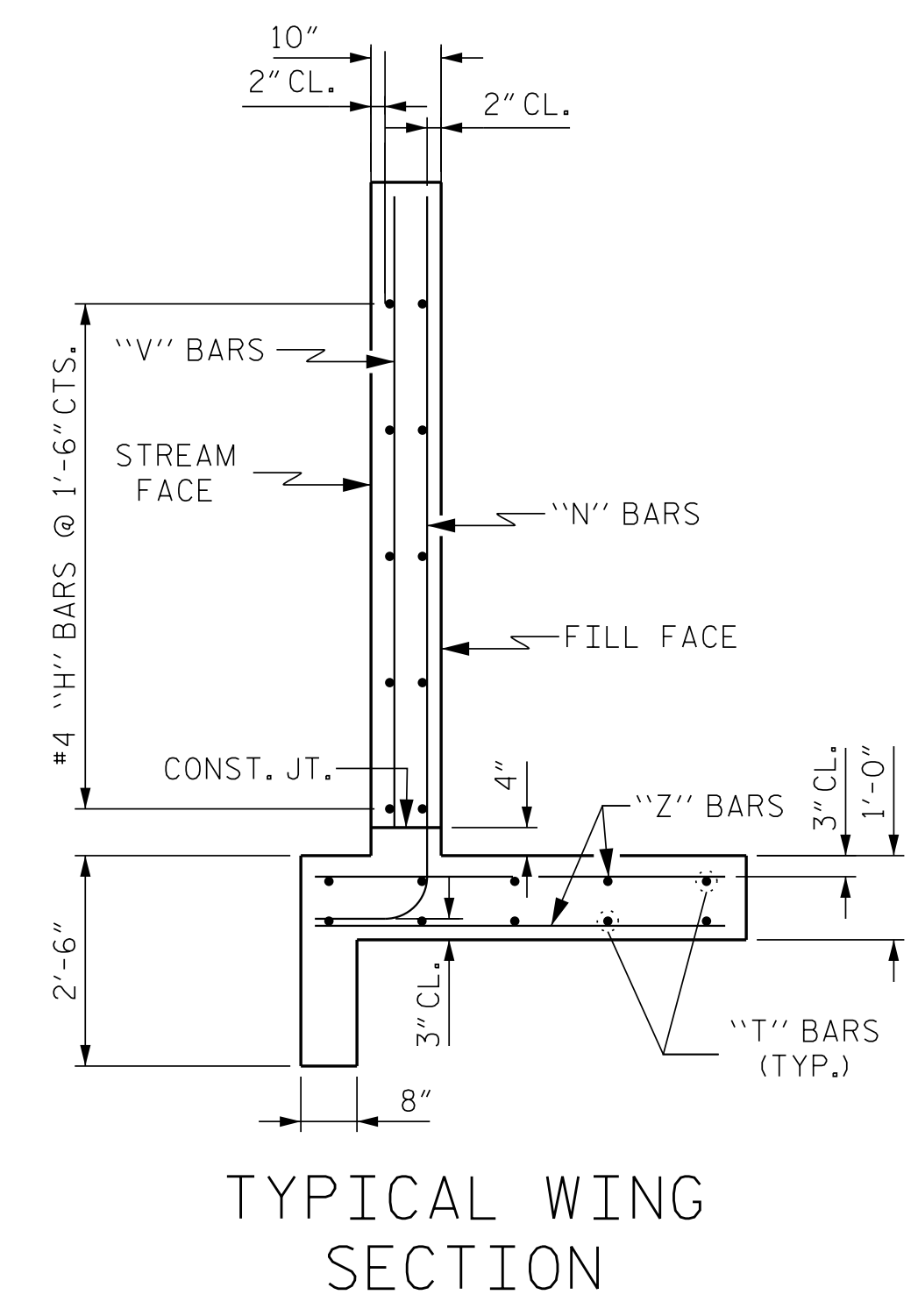
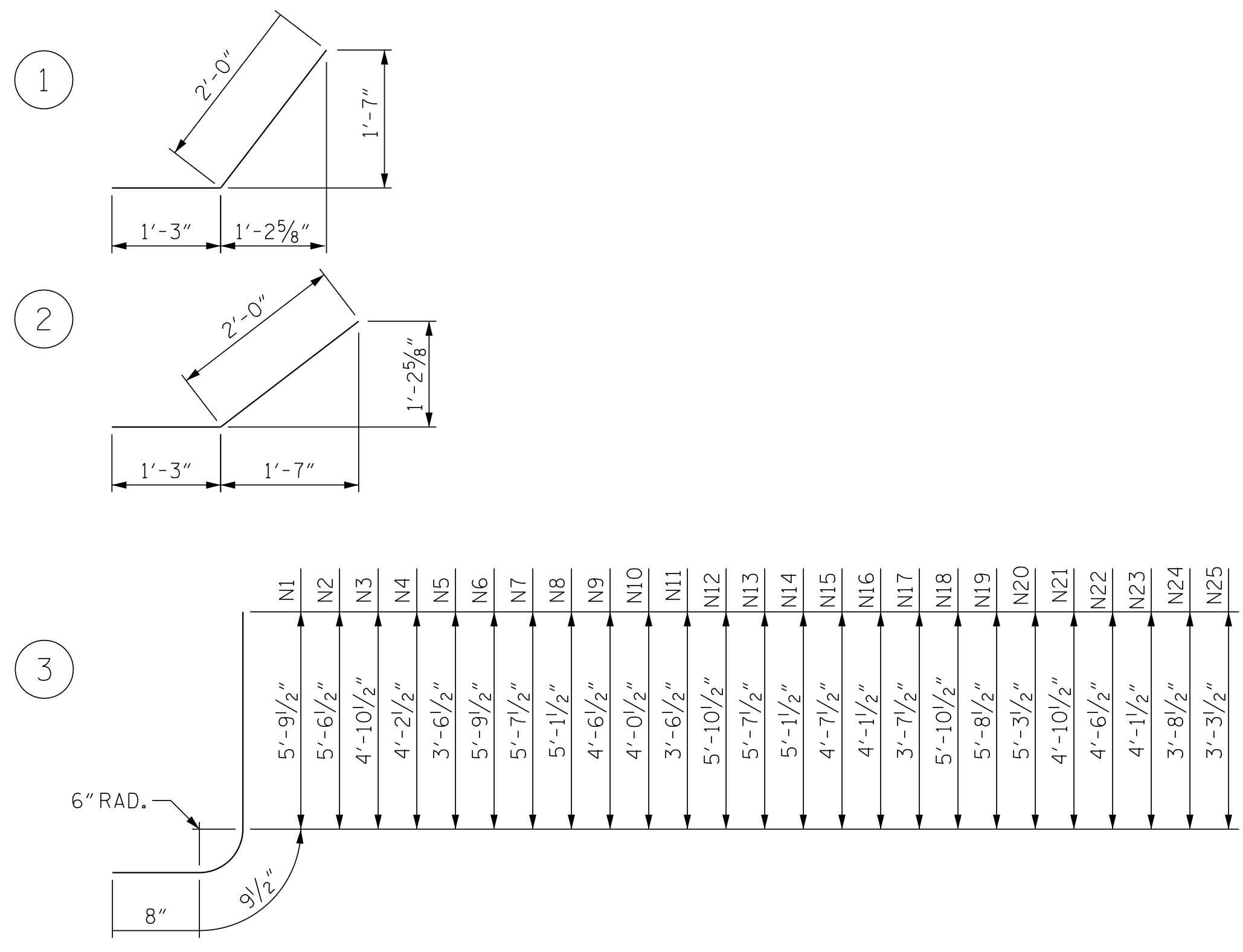
BILL OF MATERIAL

BAR	NO.	SIZE	TYPE	LENGTH	WEIGHT	BAR	NO.	SIZE	TYPE	LENGTH	WEIGHT
H1	6	#4	STR	9'-4"	37	V1	2	#4	STR	5'-3"	7
H2	2	#4	STR	7'-8"	10	V2	3	#4	STR	5'-0"	10
H3	2	#4	STR	3'-6"	5	V3	3	#4	STR	4'-4"	9
H4	12	#4	1	3'-3"	26	V4	3	#4	STR	3'-8"	7
H5	2	#4	STR	9'-7"	13	V5	2	#4	STR	3'-0"	4
H6	6	#4	STR	12'-10"	51	V6	2	#4	STR	5'-3"	7
H7	2	#4	STR	10'-8"	14	V7	3	#4	STR	5'-1"	10
H8	2	#4	STR	5'-2"	7	V8	3	#4	STR	4'-7"	9
H9	12	#4	2	3'-3"	26	V9	3	#4	STR	4'-0"	8
H10	2	#4	STR	13'-0"	17	V10	3	#4	STR	3'-6"	7
H11	6	#4	STR	13'-8"	54	V11	2	#4	STR	3'-0"	4
H12	2	#4	STR	11'-4"	15	V12	2	#4	STR	5'-4"	7
H13	2	#4	STR	5'-6"	7	V13	3	#4	STR	5'-1"	10
H14	12	#4	1	3'-3"	26	V14	3	#4	STR	4'-7"	9
H15	2	#4	STR	13'-10"	18	V15	3	#4	STR	4'-1"	8
H16	6	#4	STR	18'-0"	71	V16	3	#4	STR	3'-7"	7
H17	2	#4	STR	15'-1"	20	V17	3	#4	STR	3'-1"	6
H18	2	#4	STR	7'-7"	10	V18	2	#4	STR	5'-4"	7
H19	12	#4	2	3'-3"	26	V19	3	#4	STR	5'-2"	10
H20	2	#4	STR	18'-2"	24	V20	3	#4	STR	4'-9"	9
						V21	3	#4	STR	4'-4"	9
N1	2	#4	3	7'-3"	10	V22	3	#4	STR	4'-0"	8
N2	3	#4	3	7'-0"	14	V23	3	#4	STR	3'-7"	7
N3	3	#4	3	6'-4"	13	V24	3	#4	STR	3'-2"	6
N4	3	#4	3	5'-8"	11	V25	1	#4	STR	2'-9"	2
N5	2	#4	3	5'-0"	7						
N6	2	#4	3	7'-3"	10	Z1	4	#4	STR	4'-2"	11
N7	3	#4	3	7'-1"	14	Z2	6	#4	STR	4'-0"	16
N8	3	#4	3	6'-7"	13	Z3	6	#4	STR	3'-7"	14
N9	3	#4	3	6'-0"	12	Z4	6	#4	STR	3'-3"	13
N10	3	#4	3	5'-6"	11	Z5	4	#4	STR	3'-0"	8
N11	2	#4	3	5'-0"	7	Z6	4	#4	STR	4'-3"	11
N12	2	#4	3	7'-4"	10	Z7	6	#4	STR	4'-1"	16
N13	3	#4	3	7'-1"	14	Z8	6	#4	STR	3'-9"	15
N14	3	#4	3	6'-7"	13	Z9	6	#4	STR	3'-5"	14
N15	3	#4	3	6'-1"	12	Z10	6	#4	STR	3'-1"	12
N16	3	#4	3	5'-7"	11	Z11	4	#4	STR	2'-10"	7
N17	3	#4	3	5'-1"	10	Z12	4	#4	STR	4'-2"	11
N18	2	#4	3	7'-4"	10	Z13	6	#4	STR	4'-0"	16
N19	3	#4	3	7'-2"	14	Z14	6	#4	STR	3'-9"	15
N20	3	#4	3	6'-9"	13	Z15	6	#4	STR	3'-5"	14
N21	3	#4	3	6'-4"	13	Z16	6	#4	STR	3'-2"	13
N22	3	#4	3	6'-0"	12	Z17	6	#4	STR	2'-10"	11
N23	3	#4	3	5'-7"	11	Z18	4	#4	STR	4'-2"	11
N24	3	#4	3	5'-2"	10	Z19	6	#4	STR	4'-1"	16
N25	1	#4	3	4'-9"	3	Z20	6	#4	STR	3'-11"	16
						Z21	6	#4	STR	3'-8"	15
T1	10	#5	STR	11'-1"	116	Z22	6	#4	STR	3'-5"	14
T2	10	#5	STR	14'-8"	153	Z23	6	#5	STR	3'-2"	20
T3	10	#5	STR	15'-1"	157	Z24	6	#6	STR	2'-11"	26
T4	10	#5	STR	19'-11"	208	Z25	2	#7	STR	2'-8"	11

EPOXY COATED REINFORCING STEEL FOR 4 WINGS		1922	LBS
CLASS A CONCRETE			
4 WINGS		19.7	CY
2 HEADWALLS		0.6	CY
2 END CURTAIN WALLS		0.7	CY
<b>TOTAL</b>		<b>21.0</b>	<b>CY</b>

BAR TYPES

ALL BAR DIMENSIONS ARE OUT TO OUT.



DATE: 4/12/2017 TIME: 2:35:37 PM  
USER: jcm16032454-51000m Road400\_Technical\408\_Structure\Culverts\41\_035\_01\_T\_R5516\_SML\_WING.dgn

DRAWN BY : NKB DATE : 03/16  
CHECKED BY : JCM DATE : 03/16  
DESIGN E.O.R. : JCM DATE : 05/16

DOCUMENT NOT CONSIDERED FINAL UNLESS ALL SIGNATURES COMPLETED



PROJECT NO. R-5516  
 CRAVEN COUNTY  
 STATION: 78+08.84 -L-  
 SHEET 7 OF 7

STATE OF NORTH CAROLINA DEPARTMENT OF TRANSPORTATION RALEIGH					
WINGS FOR CONCRETE BOX CULVERT					
H = 5'-0" SLOPE = 3:1; 4:1 75° SKEW					
REVISIONS					SHEET NO.
NO.	BY:	DATE:	NO.	BY:	DATE:
1			3		
2			4		
					TOTAL SHEETS 7