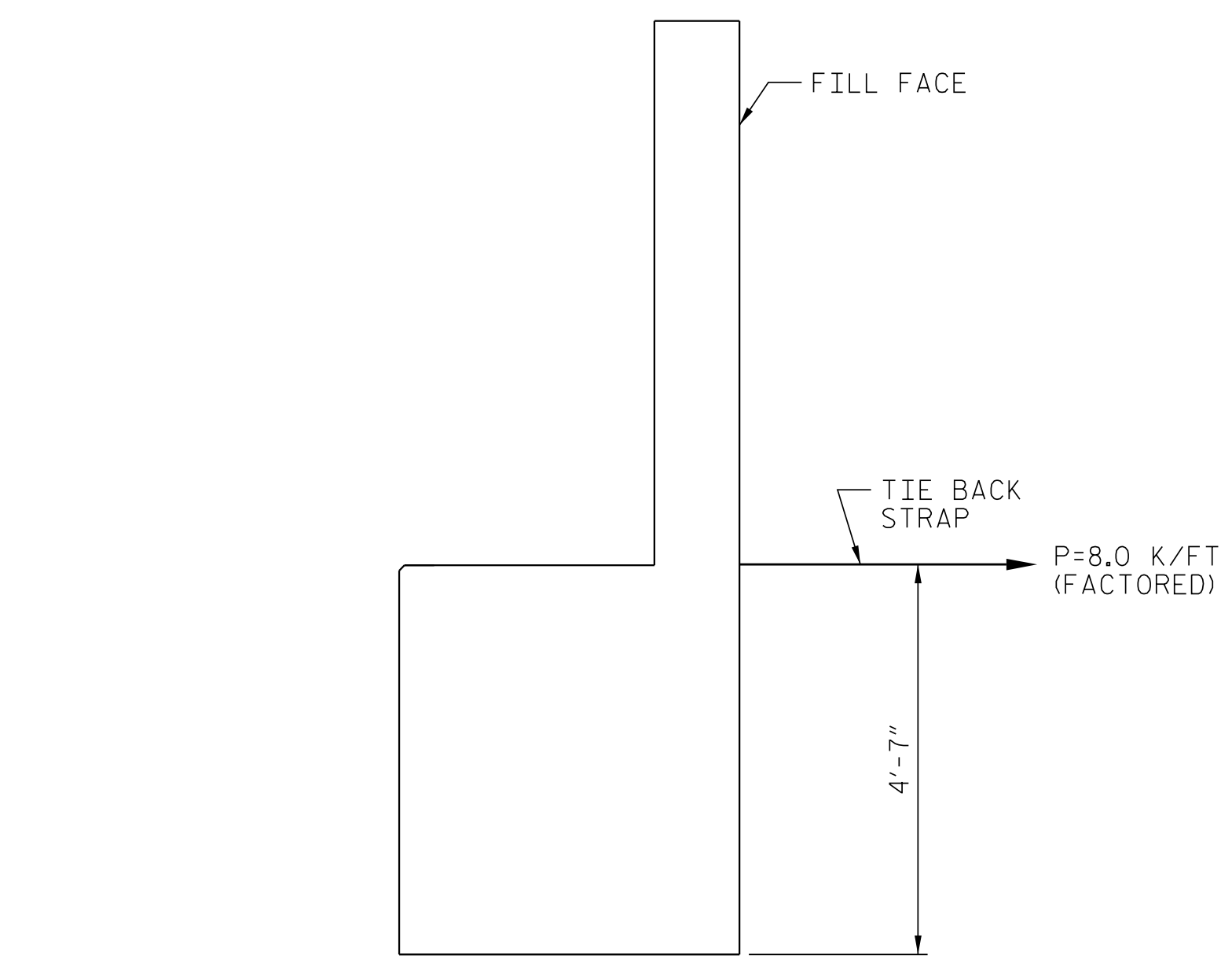
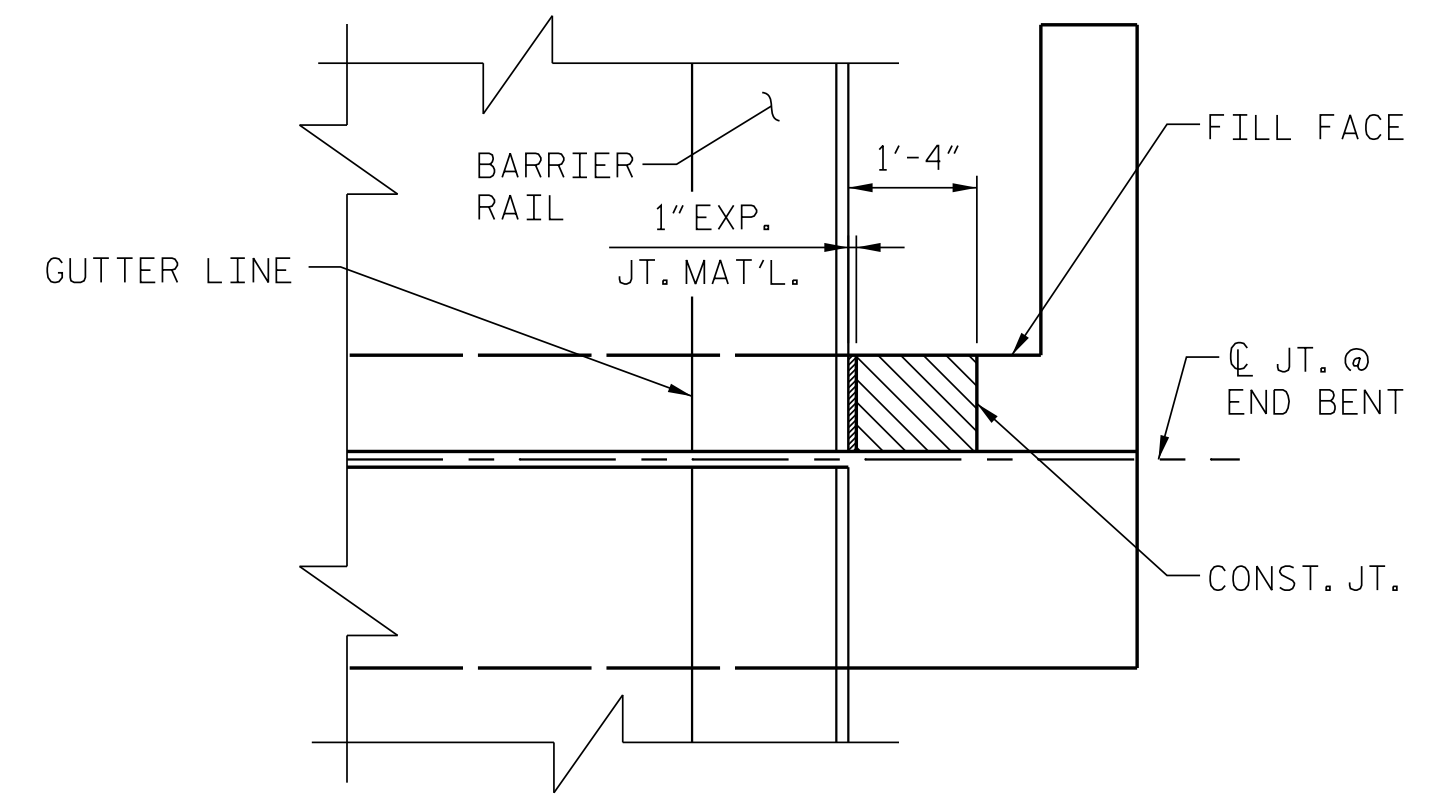


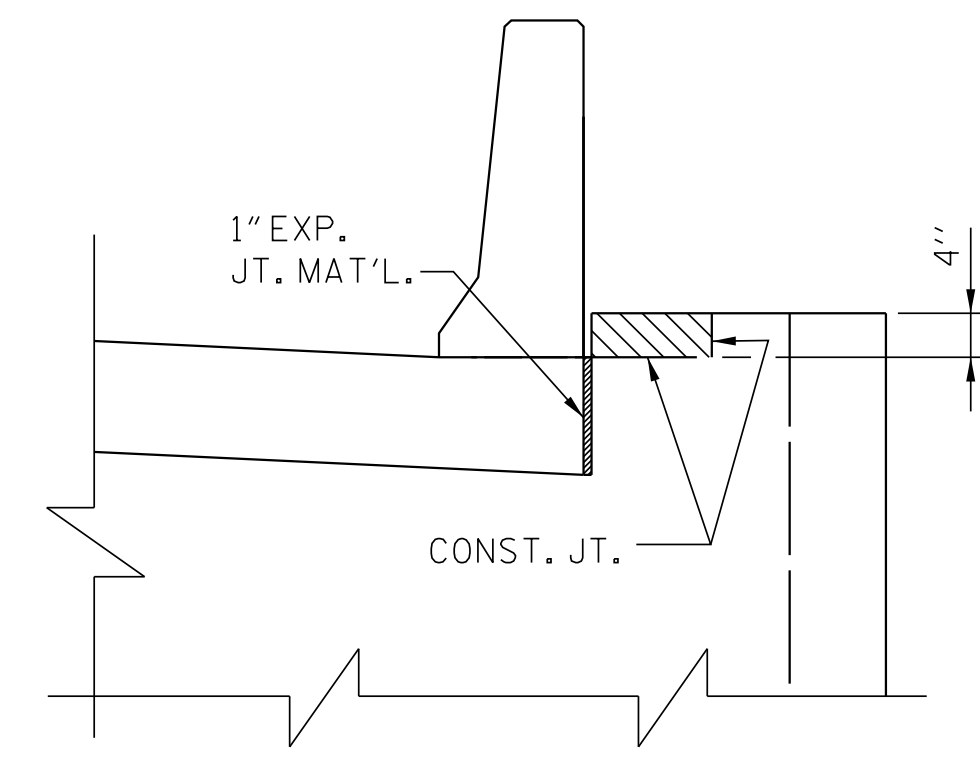
SECTION "A-A"



TIE BACK DETAILS
(RESTRAINT FOR END BENT 2)



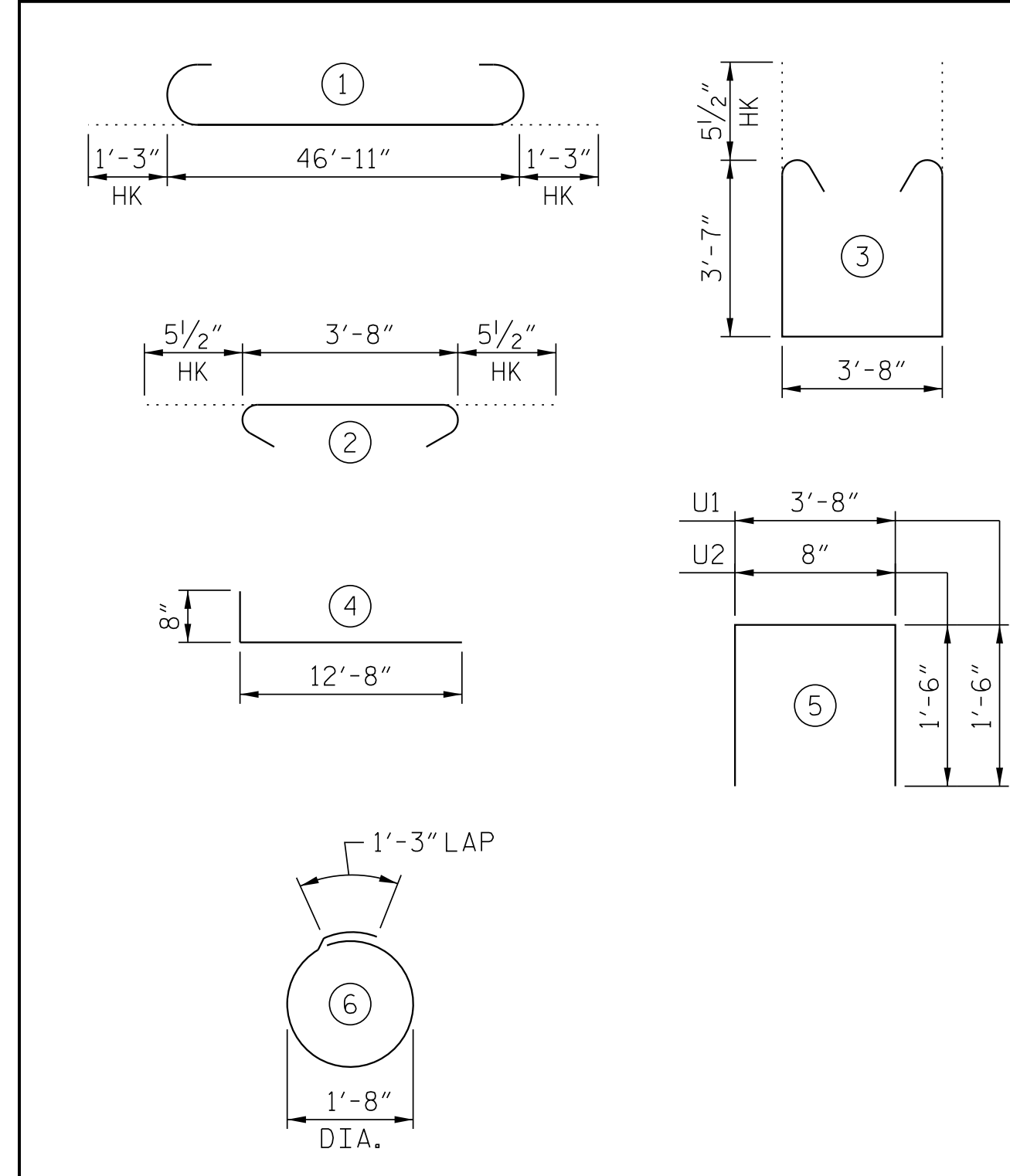
PLAN



ELEVATION

BLOCKOUT IN WINGWALL DETAILS

BAR TYPES



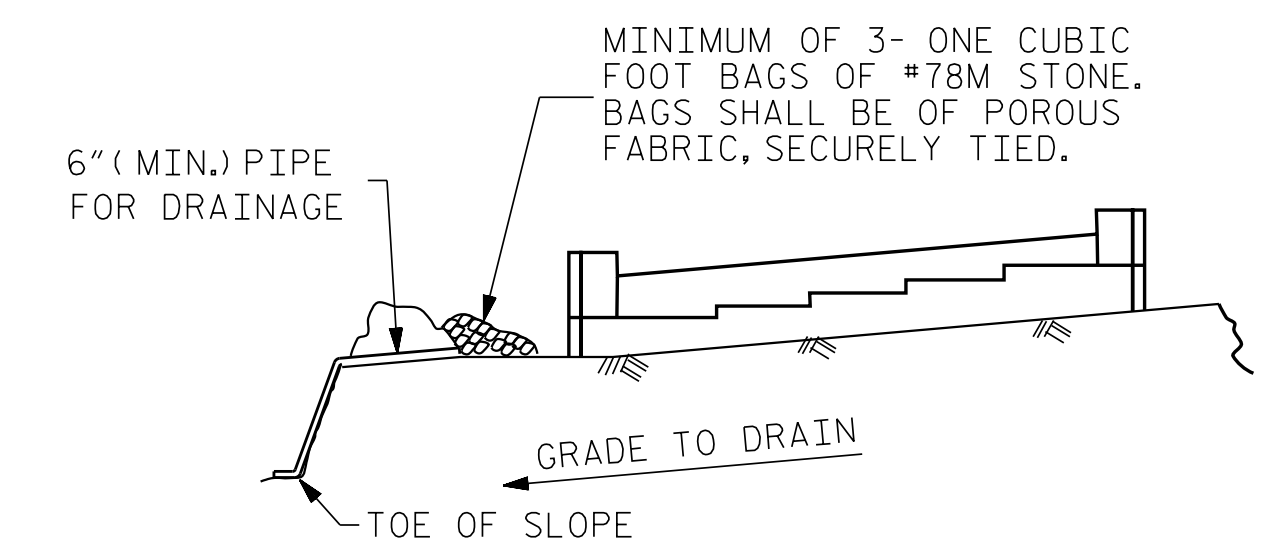
ALL BAR DIMENSIONS ARE OUT TO OUT.

BILL OF MATERIAL

END BENT 2					
BAR	NO.	SIZE	TYPE	LENGTH	WEIGHT
B1	12	#9	①	49'-5"	2016
B2	8	#6	STR	47'-0"	565
B3	12	#4	STR	3'-8"	29
B4	8	#4	STR	24'-9"	132
B5	6	#4	STR	12'-0"	48
B6	24	#4	STR	7'-0"	112
H1	56	#4	④	13'-4"	499
K1	28	#4	STR	24'-9"	463
K2	8	#4	STR	2'-7"	14
S1	58	#5	②	4'-7"	277
S2	58	#5	③	11'-9"	711
S3	36	#4	⑥	6'-6"	156
U1	28	#4	⑤	6'-8"	125
U2	41	#4	⑤	3'-8"	100
V1	82	#5	STR	10'-11"	934
V2	64	#5	STR	7'-5"	495
V3	64	#5	STR	7'-2"	478
TOTAL REINFORCING STEEL					LBS. 7154
END BENT 2 TOTAL QUANTITIES					
CLASS A CONCRETE					
POUR 1 (COLLARS, CAP & LOWER WING)					C.Y. 36.0
POUR 2 (BACKWALL & UPPER WING)					C.Y. 19.1
TOTAL					C.Y. 55.1
HP 12x53 STEEL PILES					NO. 9
PIPE DRIVING EQUIPMENT SETUP FOR HP 12X53 STEEL PILES					LIN. FT. 990
					NO. 12

DATE: 4/11/2017
TIME: 5:47:35 PM

USER: merrissoc
DIR: R:\6332444-Syncum-Road\400-Technical\408-Structure\Coord\401_223_545_P516_SML\EB20.dgn



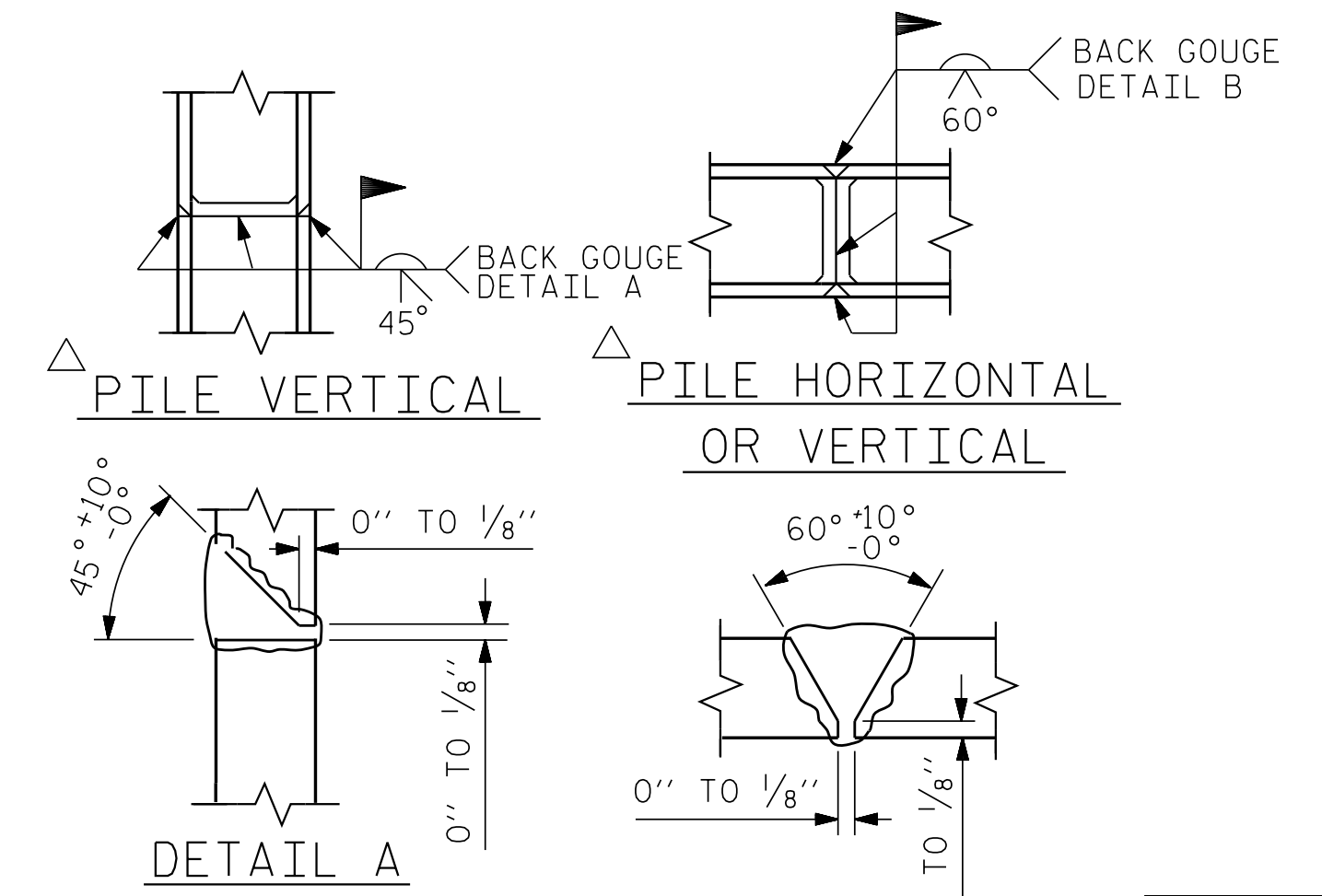
BAGGED STONE AND PIPE SHALL BE PLACED IMMEDIATELY AFTER COMPLETION OF END BENT EXCAVATION. PIPE MAY BE EITHER CONCRETE, CORRUGATED STEEL, CORRUGATED ALUMINUM ALLOY, OR CORRUGATED PLASTIC. PERFORATED PIPE WILL NOT BE ALLOWED.

BAGGED STONE SHALL REMAIN IN PLACE UNTIL THE ENGINEER DIRECTS THAT IT BE REMOVED. THE CONTRACTOR SHALL REMOVE AND DISPOSE OF SILT ACCUMULATIONS AT BAGGED STONE WHEN SO DIRECTED BY THE ENGINEER. BAGS SHALL BE REMOVED AND REPLACED WHENEVER THE ENGINEER DETERMINES THAT THEY HAVE DETERIORATED AND LOST THEIR EFFECTIVENESS.

NO SEPARATE PAYMENT WILL BE MADE FOR THIS WORK AND THE ENTIRE COST OF THIS WORK SHALL BE INCLUDED IN THE UNIT CONTRACT PRICE BID FOR THE SEVERAL PAY ITEMS.

TEMPORARY DRAINAGE AT END BENT

DRAWN BY :	MKT	DATE :	04/17
CHECKED BY :	JCM	DATE :	04/17
DESIGN E.O.R. :	JCM	DATE :	04/17



PILE SPLICE DETAILS

PROJECT NO. R-5516
CRAVEN COUNTY
STATION: 32+25.84 -YEB01-
75+13.29 -L-
SHEET 3 OF 3

AECOM
AECOM TECHNICAL SERVICES, INC.
701 CORPORATE CENTER DRIVE, SUITE 475
RALEIGH, NC 27607
(919) 854-6200 www.aecom.com
AECOM License No. F-0342

4/12/2017
NORTH CAROLINA PROFESSIONAL SEAL
030474
ENGINEER
JOHN C. MORRISON

DocuSign by
John C. Morrison
A2FDE142C2F4AB

STATE OF NORTH CAROLINA DEPARTMENT OF TRANSPORTATION RALEIGH					
SUBSTRUCTURE					
END BENT 2 SECTIONS & DETAILS					
REVISIONS					
NO.	BY:	DATE:	NO.	BY:	DATE:
1			3		
2			4		
SHEET NO. S-45					TOTAL SHEETS 51

DOCUMENT NOT CONSIDERED FINAL UNLESS ALL SIGNATURES COMPLETED