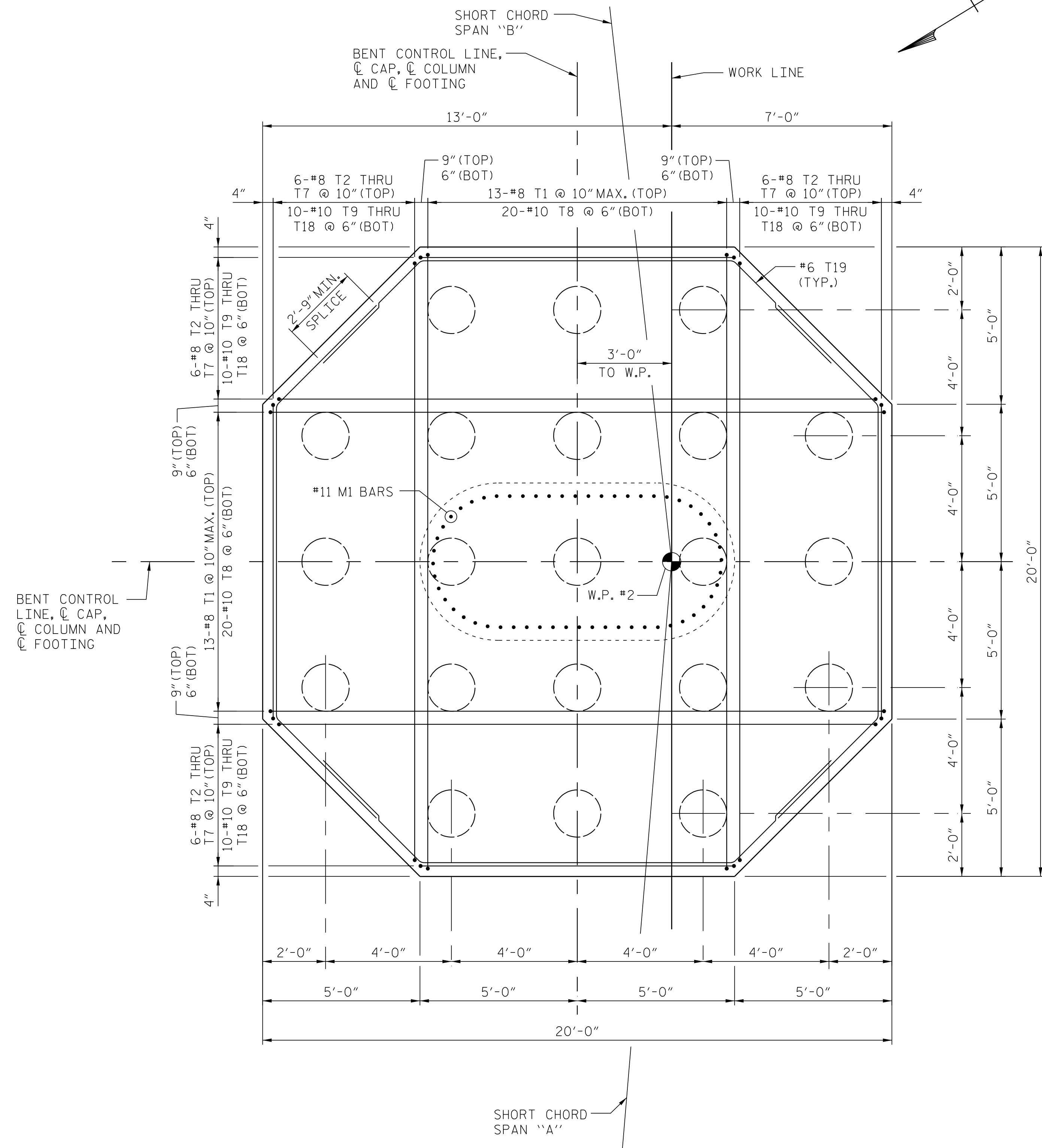
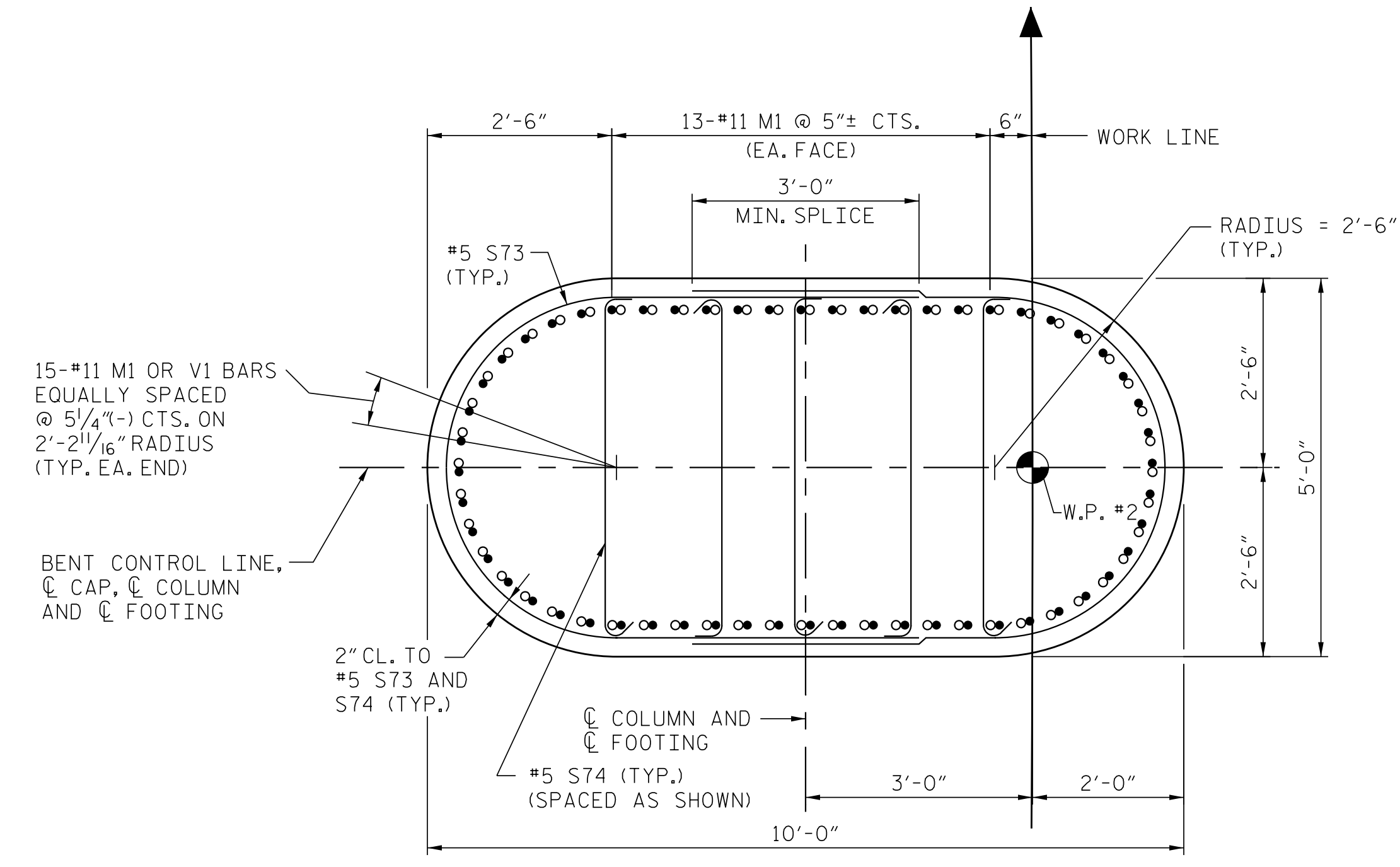


DATE: 4/12/2017  
TIME: 5:43:50 PM

USER: jcm1503  
DIR: R:\632444-Sigcom-Road\400-Technical\408-Structure\Cada\401\_B0\_S3B\_R6516\_SJK\_B102.dgn



FOOTING PLAN



SECTION A-A

- = M1 BAR
- = V1 BAR

DRAWN BY : SGS DATE : 2/16  
 CHECKED BY : JCM DATE : 2/16  
 DESIGN E.O.R. : JCM DATE : 2/16

PROJECT NO. R-5516  
 CRAVEN COUNTY  
 STATION: 32+25.84 -YEB01-  
 75+13.29 -L-  
 SHEET 2 OF 3

**AECOM**  
AECOM TECHNICAL SERVICES, INC.  
 701 CORPORATE CENTER DRIVE, SUITE 475  
 RALEIGH, NC 27607  
 (919) 854-6200 www.aecom.com  
 AECOM License No. F-0342

4/12/2017  
 NORTH CAROLINA  
 PROFESSIONAL  
 SEAL  
 030474  
 ENGINEER  
 JOHN C. MORRISON

DocuSigned by  
 John C. Morrison  
 A2FDE142C82F4A8

STATE OF NORTH CAROLINA					
DEPARTMENT OF TRANSPORTATION					
RALEIGH					
SUBSTRUCTURE					
BENT 1					
SECTIONS AND DETAILS					
REVISIONS					
NO.	BY:	DATE:	NO.	BY:	DATE:
1			3		
2			4		
SHEET NO.					S-38
TOTAL SHEETS					51

DOCUMENT NOT CONSIDERED  
 FINAL UNLESS ALL  
 SIGNATURES COMPLETED