

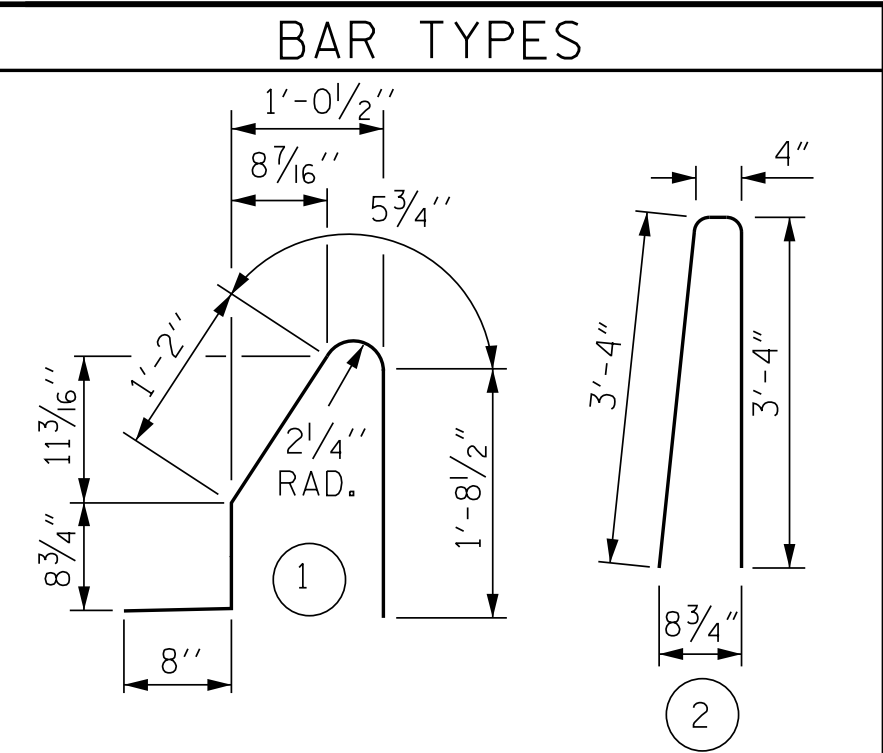
USER: nrc1503; DGN: R:\6232\444_Sincum_Road\500_Deliverables\27_Structure_Data\2017-04-12\4-5516_S1\STRUCTURE_dgn_FILES\401_445_S23_4516_SML_CBR\BRM67_84547.dwg DATE: 4/12/2017 AM

NOTES

THE BARRIER RAIL IN A CONTINUOUS UNIT SHALL NOT BE CAST UNTIL ALL SLAB CONCRETE IN THAT SPAN HAS BEEN CAST AND HAS REACHED A MINIMUM COMPRESSIVE STRENGTH OF 3,000 PSI.

ALL REINFORCING STEEL IN BARRIER RAILS SHALL BE EPOXY COATED.

GROOVED CONTRACTION JOINTS, 1/2" IN DEPTH, SHALL BE TOOLED IN ALL EXPOSED FACES OF THE BARRIER RAIL AND IN ACCORDANCE WITH ARTICLE 825-10(B) OF THE STANDARD SPECIFICATIONS, THE CONTRACTION JOINT SHALL BE LOCATED AT EACH THIRD POINT BETWEEN BARRIER RAIL EXPANSION JOINTS. ONLY ONE CONTRACTION JOINT IS REQUIRED AT MIDPOINT OF BARRIER RAIL SEGMENTS LESS THAN 20 FEET IN LENGTH AND NO CONTRACTION JOINTS ARE REQUIRED FOR THOSE SEGMENTS LESS THAN 10 FEET IN LENGTH.



ALL BAR DIMENSIONS ARE OUT TO OUT

BILL OF MATERIAL

FOR CONCRETE BARRIER RAIL ONLY

BAR	NO.	SIZE	TYPE	LENGTH	WEIGHT
* B1	187	#5	STR	14'-7"	2844
* B2	88	#5	STR	15'-4"	1407
* B3	77	#5	STR	13'-11"	1118
* B4	22	#5	STR	15'-0"	344

* S1	924	#5	1	4'-9"	4578
* S2	924	#5	2	7'-0"	6746

* EPOXY COATED REINFORCING STEEL	17037 LBS.
* CLASS AA CONCRETE	6783.4 CU. YDS.
CONCRETE BARRIER RAIL SUPERSTRUCTURE	922.32 LIN. FT.

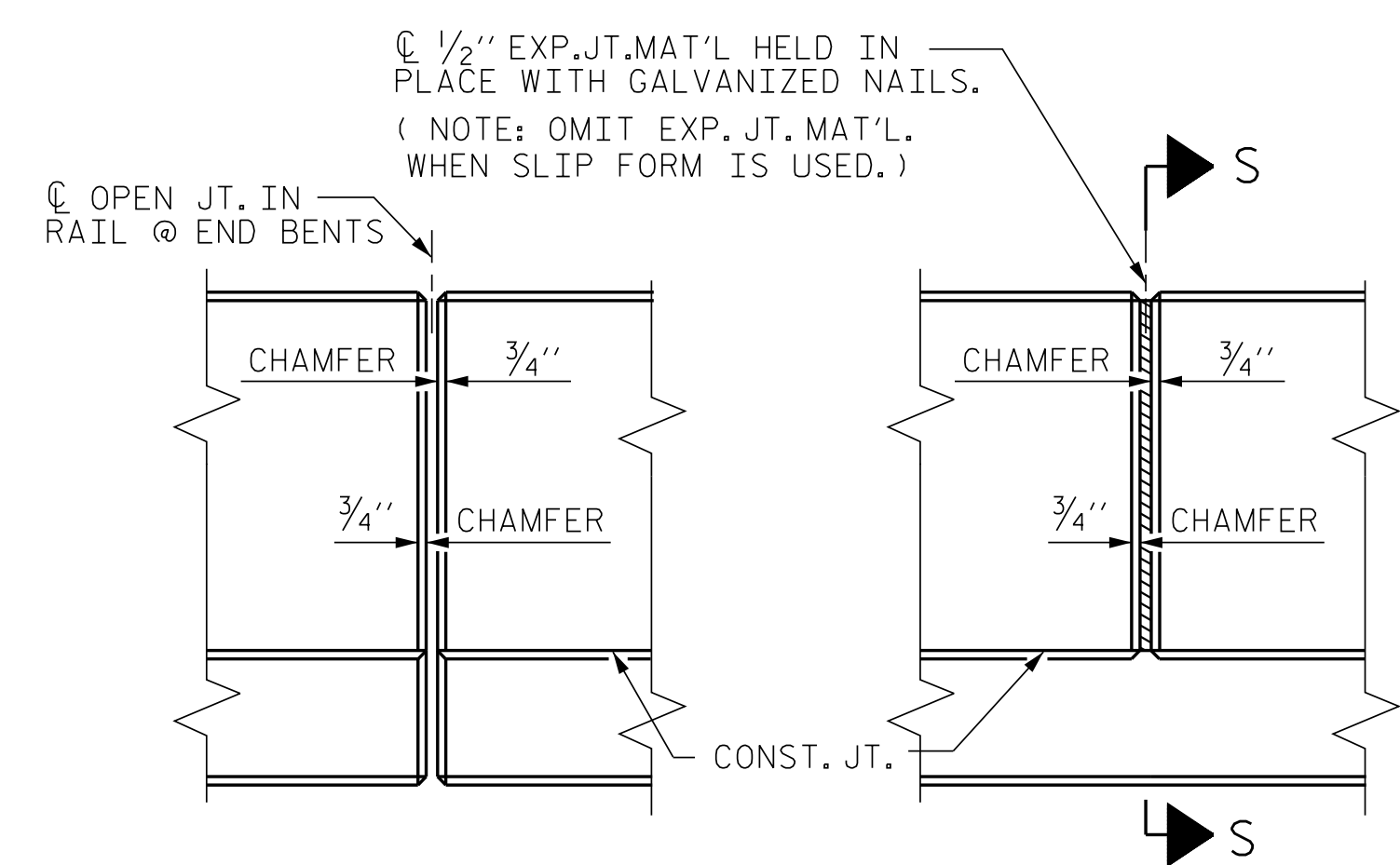
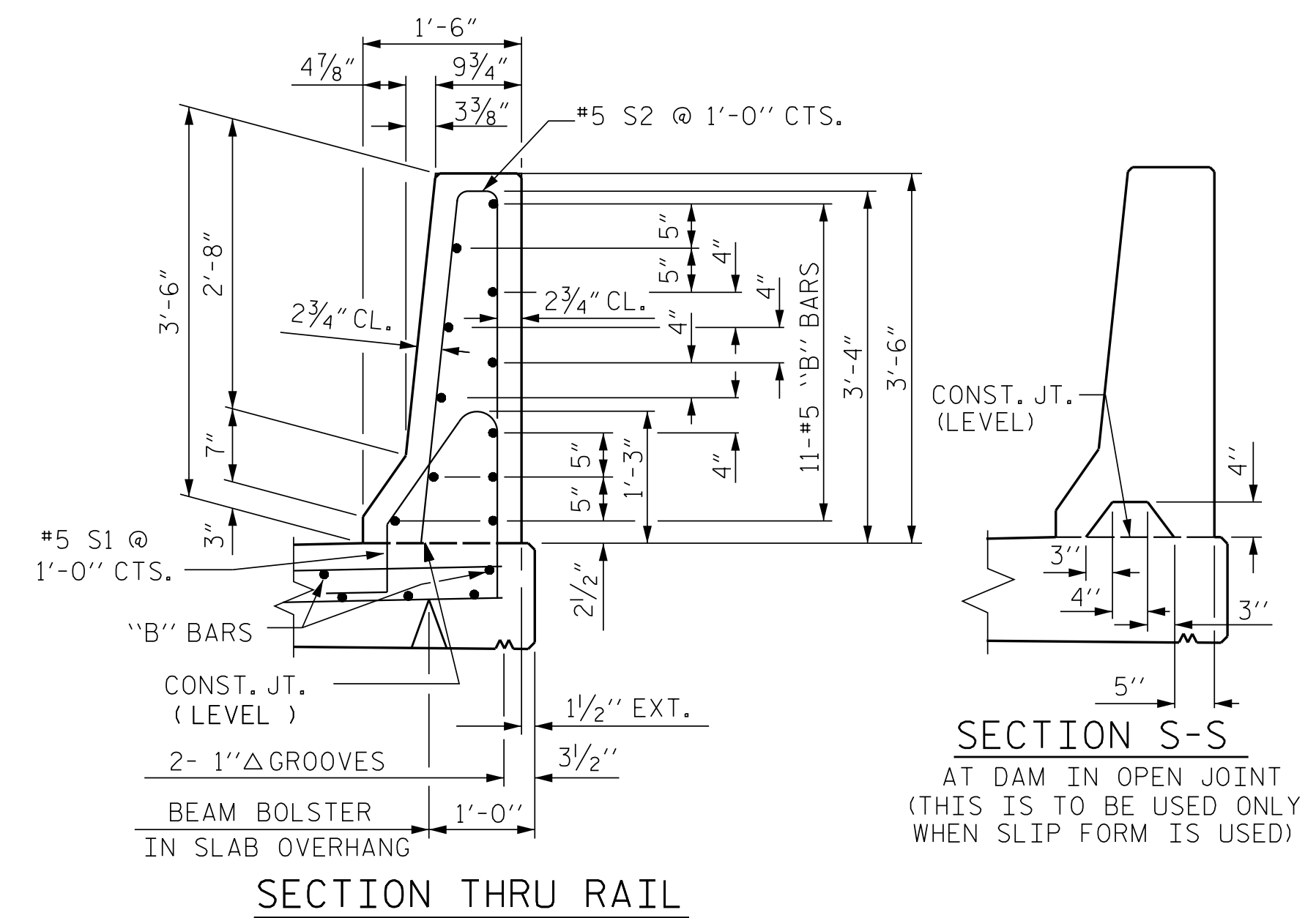
* THE QUANTITIES FOR BARRIER RAIL ON APPROACH SLABS IS NOT INCLUDED, FOR BARRIER RAIL ON APPROACH SLABS, SEE "BRIDGE APPROACH SLAB DETAILS"

PROJECT NO. R-5516

CRAVEN COUNTY

STATION: 32+25.84 -YEBO1-
75+13.29 -L-

SHEET 2 OF 2



ELEVATION AT EXPANSION JOINTS BARRIER RAIL DETAILS

ASSEMBLED BY : SGS	DATE : 09/15	
CHECKED BY : JCM	DATE : 09/15	
DRAWN BY : ARB 5/87	REV. 10/1/11	MAA/GM
CHECKED BY : SJD 9/87	REV. 7/12	MAA/GM
	REV. 6/13	MAA/GM

DOCUMENT NOT CONSIDERED FINAL UNLESS ALL SIGNATURES COMPLETED

STATE OF NORTH CAROLINA DEPARTMENT OF TRANSPORTATION RALEIGH STANDARD CONCRETE BARRIER RAIL					
REVISIONS					
NO.	BY:	DATE:	NO.	BY:	DATE:
1			3		
2			4		

SHEET NO. S-29
TOTAL SHEETS 51