

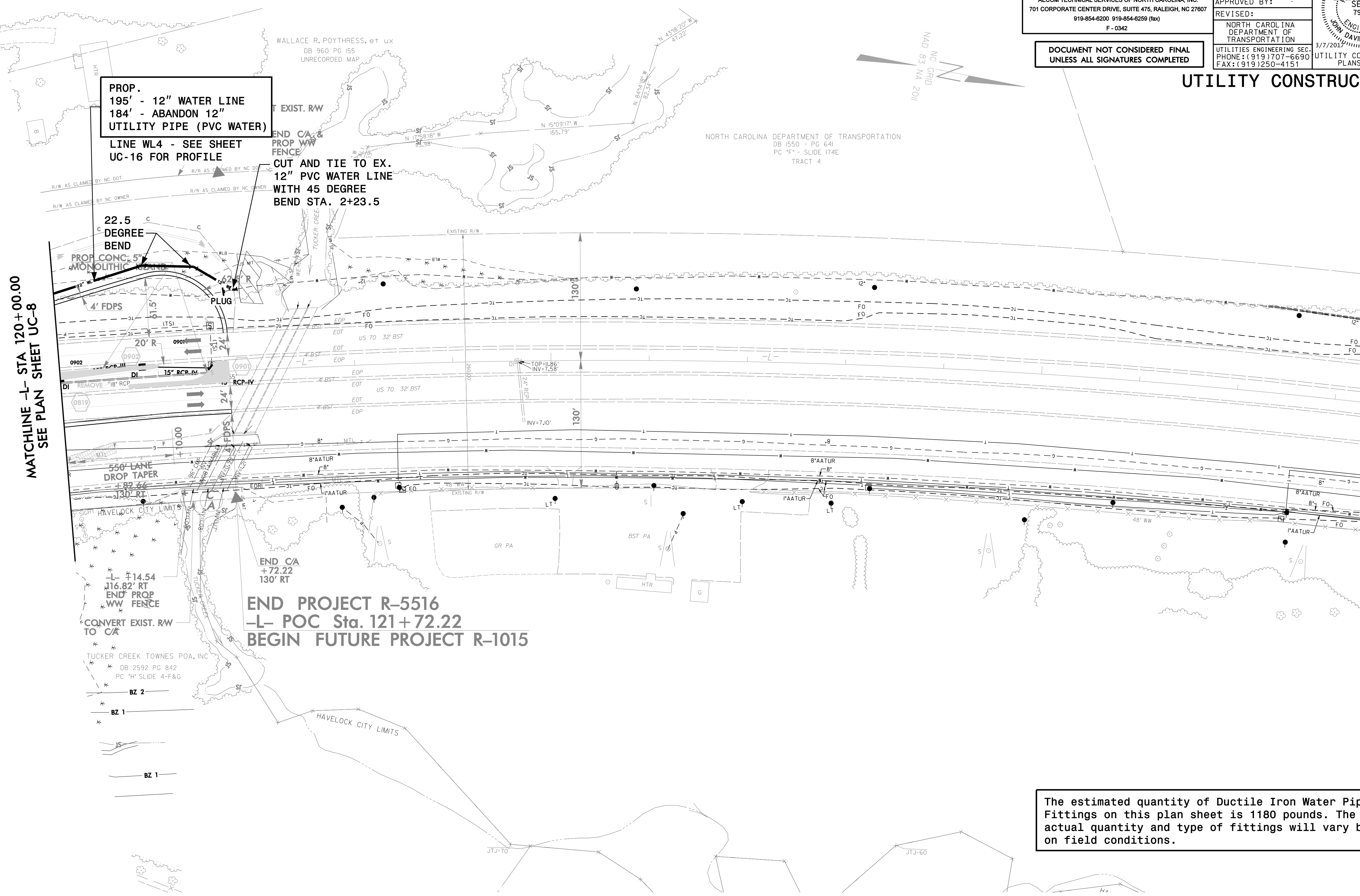
Prepared in the Office of:

AECOM

AECOM TECHNICAL SERVICES OF NORTH CAROLINA, INC.
701 CORPORATE CENTER DRIVE, SUITE 475, RALEIGH, NC 27607
919-854-6200 919-854-6259 (fax)
F-0342

PROJECT REFERENCE NO. R-5516	SHEET NO. UC-9
DESIGNED BY:	
DRAWN BY:	
CHECKED BY:	
APPROVED BY:	
REVISED:	NORTH CAROLINA DEPARTMENT OF TRANSPORTATION UTILITIES ENGINEERING SEC. PHONE: (919) 707-6690 FAX: (919) 250-4151
DOCUMENT NOT CONSIDERED FINAL UNLESS ALL SIGNATURES COMPLETED	

UTILITY CONSTRUCTION



**PROP.
195' - 12" WATER LINE
184' - ABANDON 12"
UTILITY PIPE (PVC WATER)
LINE WL4 - SEE SHEET
UC-16 FOR PROFILE**

**END CA &
PROP WW
FENCE
CUT AND TIE TO EX.
12" PVC WATER LINE
WITH 45 DEGREE
BEND STA. 2+23.5**

**MATCHLINE -L- STA 120+00.00
SEE PLAN SHEET UC-8**

**END PROJECT R-5516
-L- POC Sta. 121+72.22
BEGIN FUTURE PROJECT R-1015**

The estimated quantity of Ductile Iron Water Pipe Fittings on this plan sheet is 1180 pounds. The actual quantity and type of fittings will vary based on field conditions.