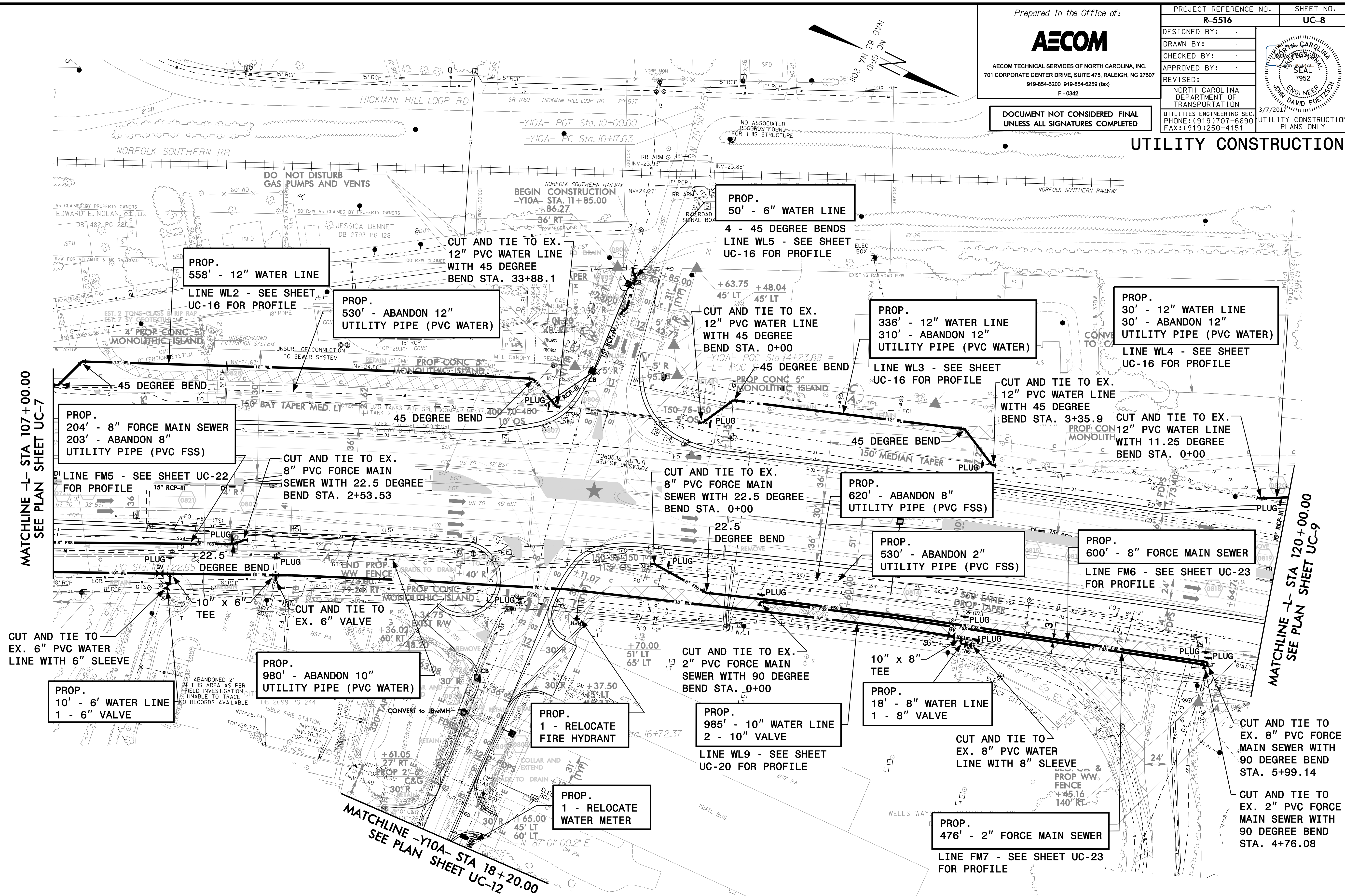


PROJECT REFERENCE NO.	SHEET NO.
R-5516	UC-8
DESIGNED BY:	
DRAWN BY:	
CHECKED BY:	
APPROVED BY:	
REVISED:	3/7/2011
NORTH CAROLINA DEPARTMENT OF TRANSPORTATION	
UTILITIES ENGINEERING SEC. PHONE: (919) 707-6690 FAX: (919) 250-4151	
UTILITY CONSTRUCTION PLANS ONLY	

UTILITY CONSTRUCTION



MATCHLINE -L- STA 107+00.00
SEE PLAN SHEET UC-7

MATCHLINE -L- STA 120+00.00
SEE PLAN SHEET UC-9

The estimated quantity of Ductile Iron Sewer Pipe Fittings on this plan sheet is 730 pounds. The actual quantity and type of fittings will vary based on field conditions.

The estimated quantity of Ductile Iron Water Pipe Fittings on this plan sheet is 4125 pounds. The actual quantity and type of fittings will vary based on field conditions.

DATE: 3/6/2011
TIME: 3:00:55 PM
DRAWN: 15516 uc-wah.dwg