



AECOM TECHNICAL SERVICES OF NORTH CAROLINA, INC.
701 CORPORATE CENTER DRIVE, SUITE 475, RALEIGH, NC 27607
919-854-6200 919-854-6259 (fax)
F-0342

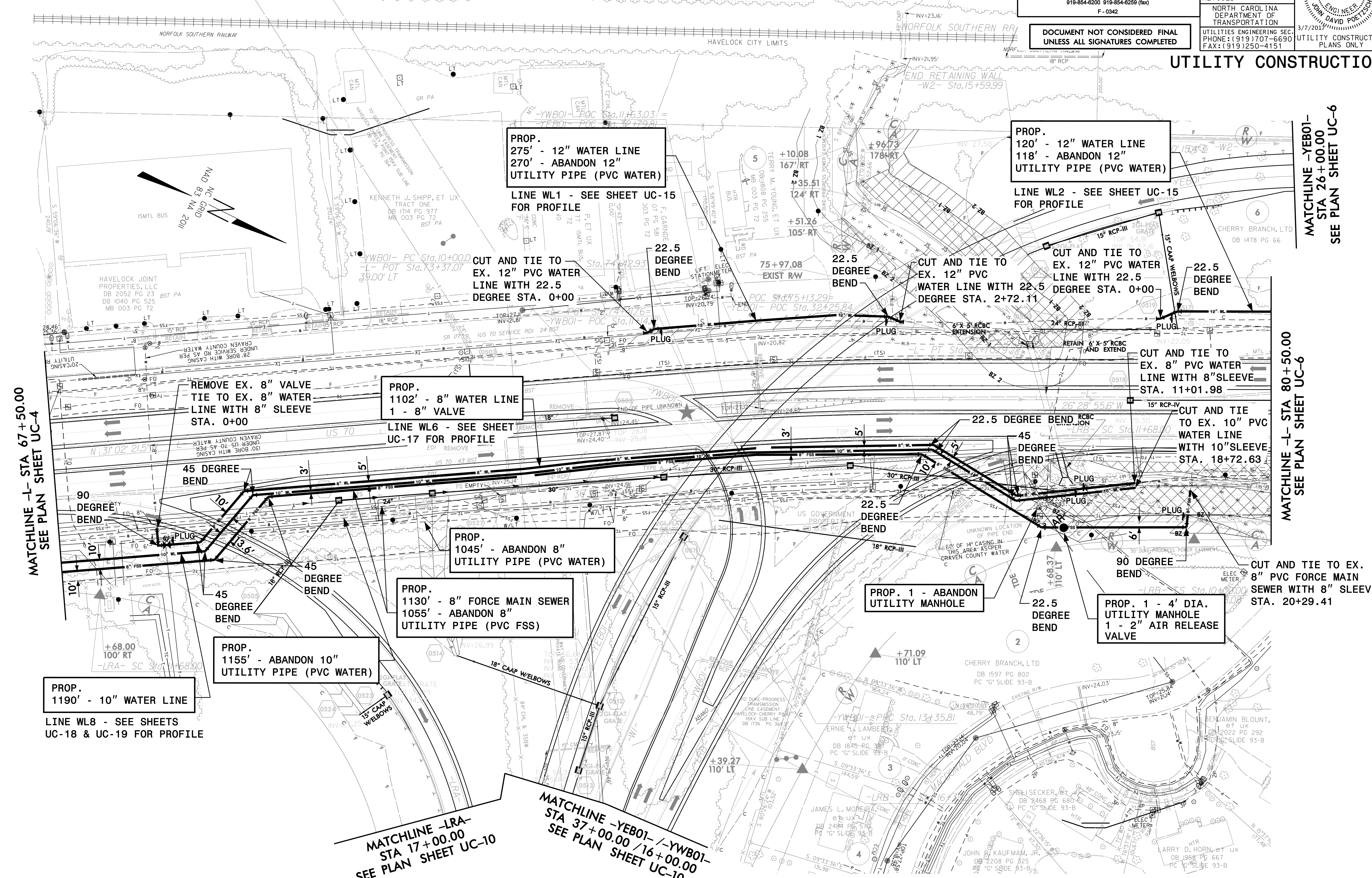
| | |
|--|--------------------------|
| PROJECT REFERENCE NO. R-5516 | SHEET NO. UC-5 |
| DESIGNED BY: | |
| DRAWN BY: | |
| CHECKED BY: | |
| APPROVED BY: | |
| REVISION: | 3/7/2011 |
| NORTH CAROLINA DEPARTMENT OF TRANSPORTATION | |
| UTILITIES ENGINEERING SEC. PHONE: (919) 707-6690 FAX: (919) 250-4151 | |
| UTILITY CONSTRUCTION PLANS ONLY | |

**DOCUMENT NOT CONSIDERED FINAL
UNLESS ALL SIGNATURES COMPLETED**

UTILITY CONSTRUCTION

The estimated quantity of Ductile Iron Sewer Pipe Fittings on this plan sheet is 915 pounds. The actual quantity and type of fittings will vary based on field conditions.

The estimated quantity of Ductile Iron Water Pipe Fittings on this plan sheet is 3205 pounds. The actual quantity and type of fittings will vary based on field conditions.



MATCHLINE -L- STA 67+50.00
SEE PLAN SHEET UC-4

MATCHLINE -YEB01-
STA 26+00.00
SEE PLAN SHEET UC-6

MATCHLINE -L- STA 80+50.00
SEE PLAN SHEET UC-6

MATCHLINE -LRA-
STA 17+00.00
SEE PLAN SHEET UC-10

MATCHLINE -YEB01- /-YWB01-
STA 37+00.00 /16+00.00
SEE PLAN SHEET UC-10

PROP. 1190' - 10" WATER LINE
LINE WL8 - SEE SHEETS UC-18 & UC-19 FOR PROFILE

PROP. 1155' - ABANDON 10" UTILITY PIPE (PVC WATER)

PROP. 1130' - 8" FORCE MAIN SEWER
1055' - ABANDON 8" UTILITY PIPE (PVC FSS)

PROP. 1045' - ABANDON 8" UTILITY PIPE (PVC WATER)

PROP. 1102' - 8" WATER LINE
1 - 8" VALVE
LINE WL6 - SEE SHEET UC-17 FOR PROFILE

PROP. 275' - 12" WATER LINE
270' - ABANDON 12" UTILITY PIPE (PVC WATER)
LINE WL1 - SEE SHEET UC-15 FOR PROFILE

PROP. 120' - 12" WATER LINE
118' - ABANDON 12" UTILITY PIPE (PVC WATER)
LINE WL2 - SEE SHEET UC-15 FOR PROFILE

CUT AND TIE TO EX. 8" PVC FORCE MAIN SEWER WITH 8" SLEEVE STA. 20+29.41

PROP. 1 - 4" DIA. UTILITY MANHOLE
1 - 2" AIR RELEASE VALVE

PROP. 1 - ABANDON UTILITY MANHOLE