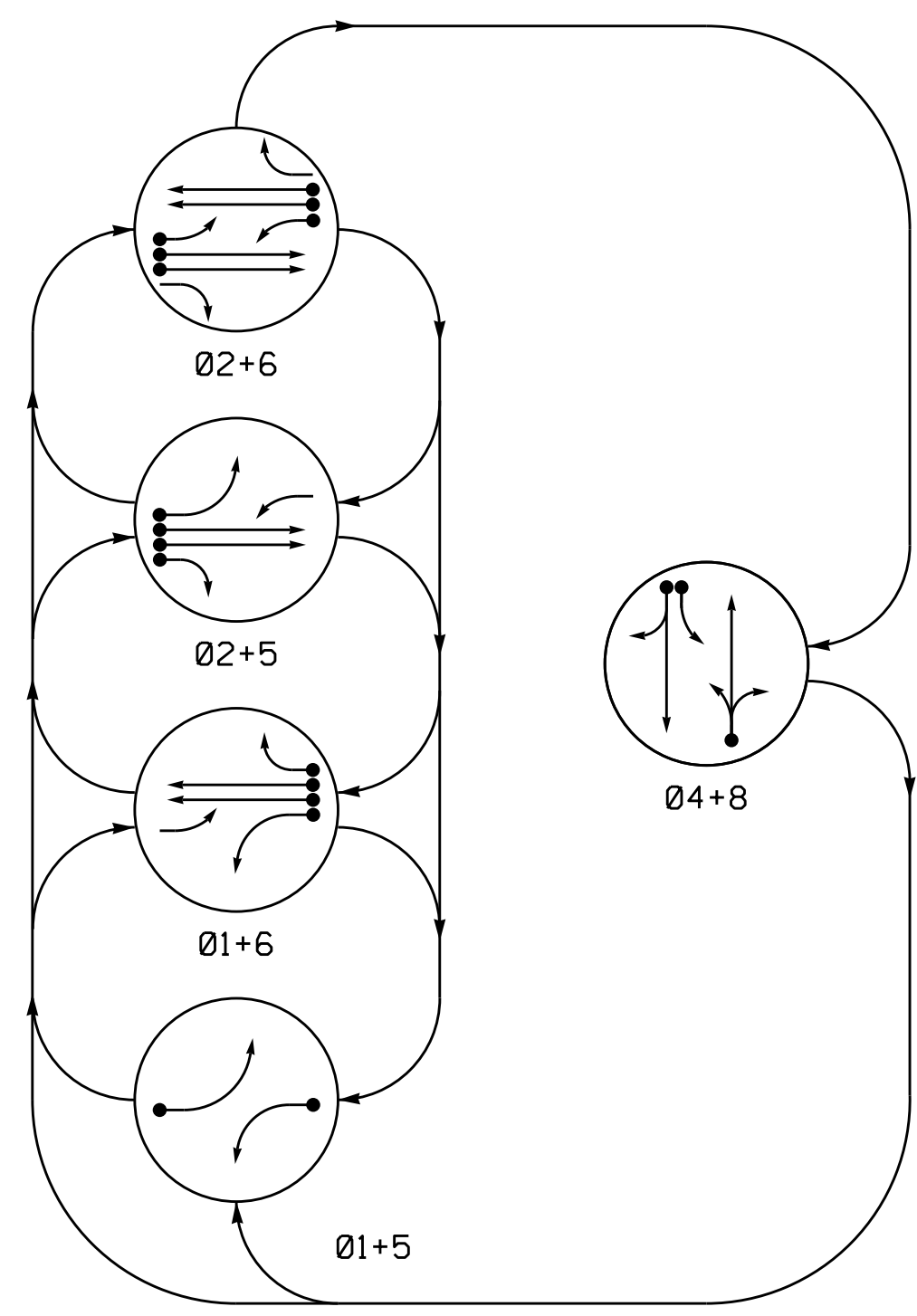


PHASING DIAGRAM



EV PREEMPT PHASES

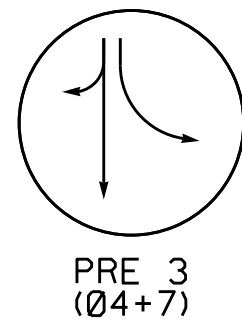
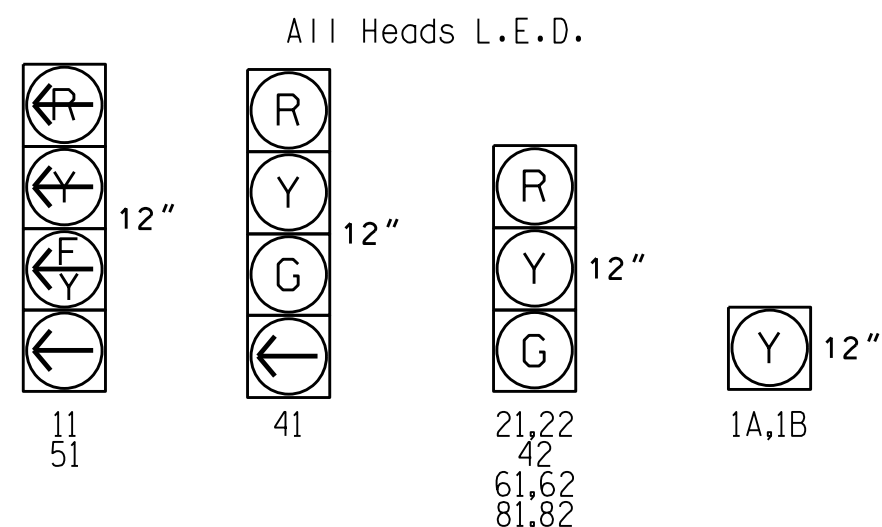


TABLE OF OPERATION

SIGNAL FACE	PHASE						
	01+5	02+5	02+6	04+8	P	F	H
11	←	←	←	←	←	←	←
21,22	R	R	G	G	R	R	Y
41	R	R	R	R	G	G	R
42	R	R	R	R	G	G	R
51	←	←	←	←	←	←	←
61,62	R	G	R	G	R	R	Y
81,82	R	R	R	R	G	R	R

SIGNAL FACE I.D.



OASIS 2070 LOOP & DETECTOR INSTALLATION CHART

LOOP	SIZE (FT)	DISTANCE FROM STOPBAR (FT)	TURNS	NEW LOOP	DETECTOR PROGRAMMING					SYSTEM LOOP	NEW CARD	
					PHASE	CALLING	EXTENSION	FULL TIME DELAY	STRETCH TIME			DELAY TIME
1A	6X60	0	*	Y	1	Y	Y	-	-	20	-	Y
2A	6X6	420	*	Y	2	Y	Y	-	-	-	-	Y
2B	6X6	420	*	Y	2	Y	Y	-	-	-	-	Y
2C	6X60	0	*	Y	2	Y	Y	5.0	2	-	-	Y
2D	6X60	0	*	Y	2	Y	Y	5.0	2	-	-	Y
4A	6X30	0	*	Y	4	Y	Y	-	-	3	-	Y
4B	6X30	0	*	Y	4	Y	Y	-	-	10	-	Y
4C	6X30	0	*	Y	4	Y	Y	-	-	10	-	Y
4D	6X30	0	*	Y	4	Y	Y	-	-	10	-	Y
4E	6X30	0	*	Y	4	Y	Y	-	-	10	-	Y
5A	6X60	0	*	Y	5	Y	Y	-	-	20	-	Y
6A	6X6	420	*	Y	6	Y	Y	-	-	-	-	Y
6B	6X6	420	*	Y	6	Y	Y	-	-	-	-	Y
6C	6X60	0	*	Y	6	Y	Y	5.0	2	-	-	Y
6D	6X60	0	*	Y	6	Y	Y	5.0	2	-	-	Y
8A	6X40	0	*	Y	8	Y	Y	-	-	10	-	Y

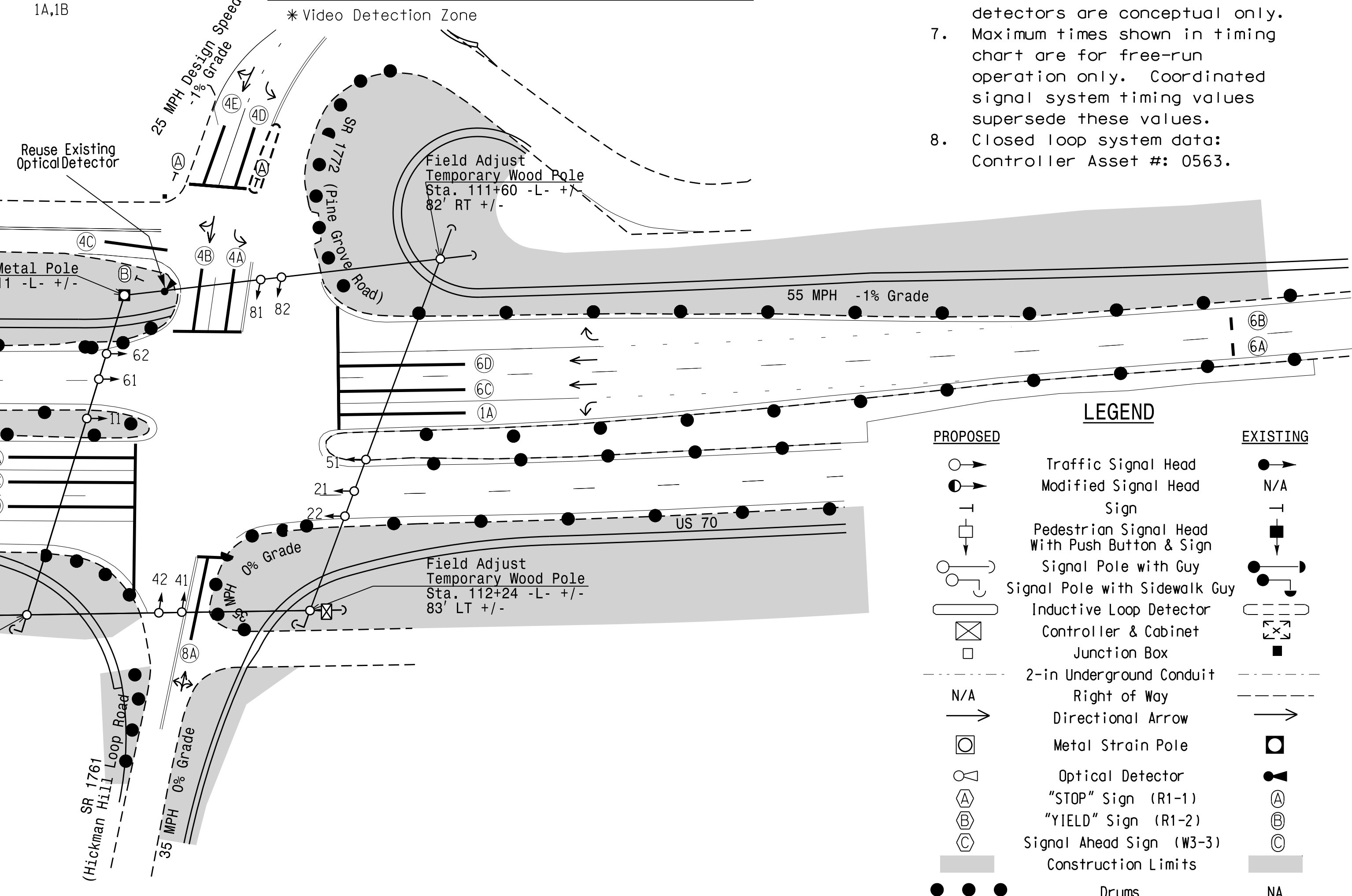
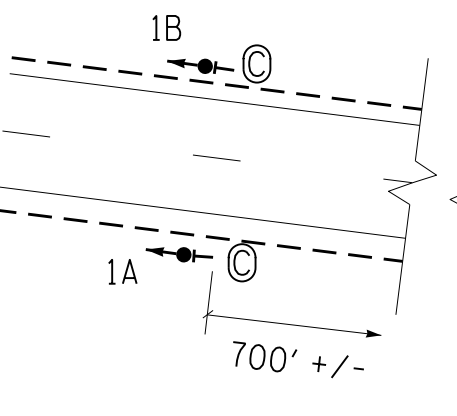
5 Phase Fully Actuated w/ EV Preempt US 70 (Havelock) CLS

NOTES

- Refer to "Roadway Standard Drawings NCDOT" dated January 2012 and "Standard Specifications for Roads and Structures" dated January 2012.
- Do not program signal for late night flashing operation unless otherwise directed by the Engineer.
- Set all detector units to presence mode.
- Locate new cabinet so as not to obstruct sight distance of vehicles turning right on red.
- Flash beacon 1A, 1B continuously.
- This intersection features an optical preemption system. Shown locations of optical detectors are conceptual only.
- Maximum times shown in timing chart are for free-run operation only. Coordinated signal system timing values supersede these values.
- Closed loop system data: Controller Asset #: 0563.

PHASING DIAGRAM DETECTION LEGEND

- DETECTED MOVEMENT
- UNDETECTED MOVEMENT (OVERLAP)
- UNSIGNALIZED MOVEMENT
- PEDESTRIAN MOVEMENT



LEGEND

PROPOSED	EXISTING
Traffic Signal Head	N/A
Modified Signal Head	N/A
Sign	N/A
Pedestrian Signal Head With Push Button & Sign	N/A
Signal Pole with Guy	N/A
Signal Pole with Sidewalk Guy	N/A
Inductive Loop Detector	N/A
Controller & Cabinet	N/A
Junction Box	N/A
2-in Underground Conduit	N/A
Right of Way	N/A
Directional Arrow	N/A
Metal Strain Pole	N/A
Optical Detector	N/A
"STOP" Sign (R1-1)	N/A
"YIELD" Sign (R1-2)	N/A
Signal Ahead Sign (W3-3)	N/A
Construction Limits	N/A
Drums	NA

OASIS 2070 TIMING CHART

FEATURE	PHASE						
	1	2	4	5	6	8	
Min Green 1 *	7	14	7	7	14	7	
Extension 1 *	2.0	6.0	3.0	2.0	6.0	3.0	
Max Green 1 *	15	90	25	15	90	25	
Yellow Clearance	3.0	5.3	3.8	3.0	5.3	3.8	
Red Clearance	3.1	1.2	2.9	3.1	1.2	2.9	
Walk 1 *	-	-	-	-	-	-	
Don't Walk 1	-	-	-	-	-	-	
Seconds Per Actuation *	-	-	-	-	-	-	
Max Variable Initial *	-	-	-	-	-	-	
Time Before Reduction *	-	15	-	-	15	-	
Time To Reduce *	-	45	-	-	45	-	
Minimum Gap	-	3.4	-	-	3.4	-	
Recall Mode	-	MIN RECALL	-	-	MIN RECALL	-	
Vehicle Call Memory	-	-	-	-	-	-	
Dual Entry	-	-	ON	-	-	ON	
Simultaneous Gap	ON	ON	ON	ON	ON	ON	

OASIS 2070 EV PREEMPT

FUNCTION	PRE 3
Interval 1 - Dwell Green	255
Interval 1 - Dwell Yellow	3.8
Interval 1 - Dwell Red	2.9
Interval 5 - Exit Green	1
Interval 5 - Yellow	0.0
Interval 5 - Red	0.0
Exit Phase(s)	2,6
Priority	Medium
Delay Time	0.0
Min Green Before Pre	1
Ped Clear Before Pre	0
Yellow Clear Before Pre	0.0*
Red Clear Before Pre	0.0*
Dwell Min Time	7
Enable Backup Protection	Y
Ped Clear Through Yellow	N
Omit Overlaps	-
Preempt Extend**	2

* These values may be field adjusted. Do not adjust Min Green and Extension times for phases 2 and 6 lower than what is shown. Min Green for all other phases should not be lower than 4 seconds.

** Time defaults to time used for phase during normal operation. Program Timing on Optical Detection Unit.

Signal Upgrade - Temporary Design (Phase II)

US 70 at SR 1761 (Hickman Hill Loop Rd.) / SR 1772 (Pine Grove Rd.)

Division 2 Craven County Havelock

PLAN DATE: October 2016 REVIEWED BY: JPG

PREPARED BY: KGP, Jr. REVIEWED BY:

REVISIONS: INIT. DATE

SCALE: 1"=40'

750 N. Greenfield Pkwy, Garner, NC 27529

DOCUMENT NOT CONSIDERED FINAL UNLESS ALL SIGNATURES COMPLETED

SEAL: NORTH CAROLINA PROFESSIONAL ENGINEER JASON P. GALLOWAY SEAL 029904

2/2/2017 DATE

SIG. INVENTORY NO. 02-0563T

02-FEB-2017 11:49 C:\Users\jgallows\Documents\02-0563\020563_sigs.dgn - 2016modL_temp.dgn