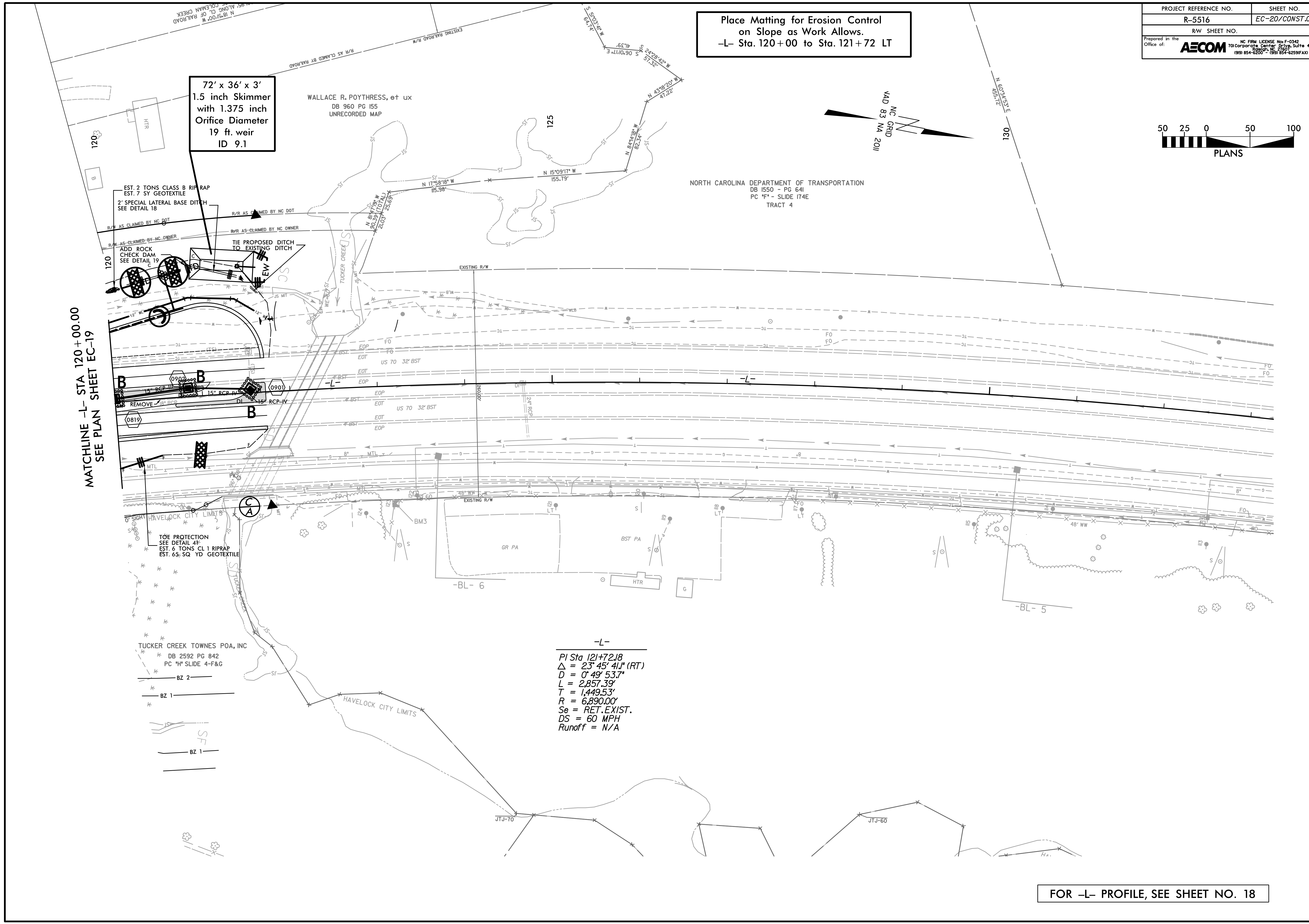
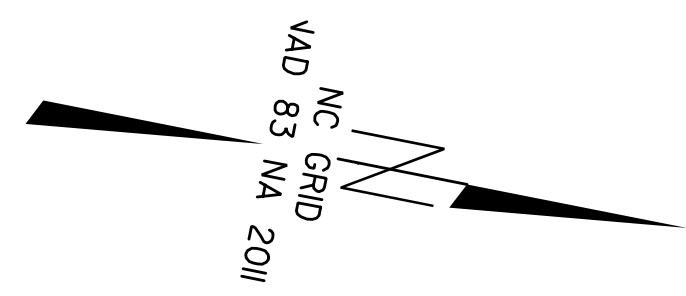
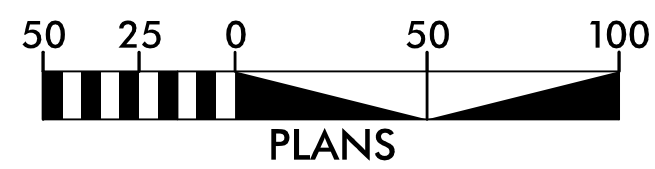


Place Matting for Erosion Control  
on Slope as Work Allows.  
-L- Sta. 120+00 to Sta. 121+72 LT



72' x 36' x 3'  
1.5 inch Skimmer  
with 1.375 inch  
Orifice Diameter  
19 ft. weir  
ID 9.1

MATCHLINE -L- STA 120+00.00  
SEE PLAN SHEET EC-19

EST. 2 TONS CLASS B RIP RAP  
EST. 7 SY GEOTEXTILE  
2" SPECIAL LATERAL BASE DITCH  
SEE DETAIL 18

ADD ROCK CHECK DAM  
SEE DETAIL 19

REMOVE R/W

TOE PROTECTION  
SEE DETAIL 41  
EST. 6 TONS CL 1 RIPRAP  
EST. 65 SQ YD GEOTEXTILE

TUCKER CREEK TOWNES POA, INC  
DB 2592 PG 842  
PC \*H\* SLIDE 4-F&G

BZ 2  
BZ 1

BZ 1

-L-  
PI Sta 121+72.18  
 $\Delta = 23^{\circ} 45' 41''$  (RT)  
 $D = 0^{\circ} 49' 53.7''$   
 $L = 2,857.39'$   
 $T = 1,449.53'$   
 $R = 6,890.00'$   
 $Se = RET. EXIST.$   
 $DS = 60 MPH$   
 $Runoff = N/A$

FOR -L- PROFILE, SEE SHEET NO. 18