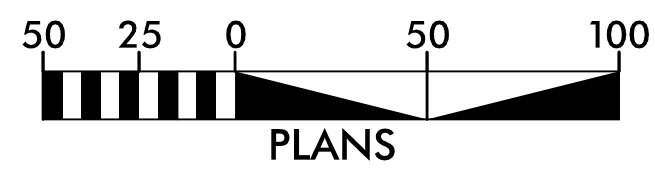
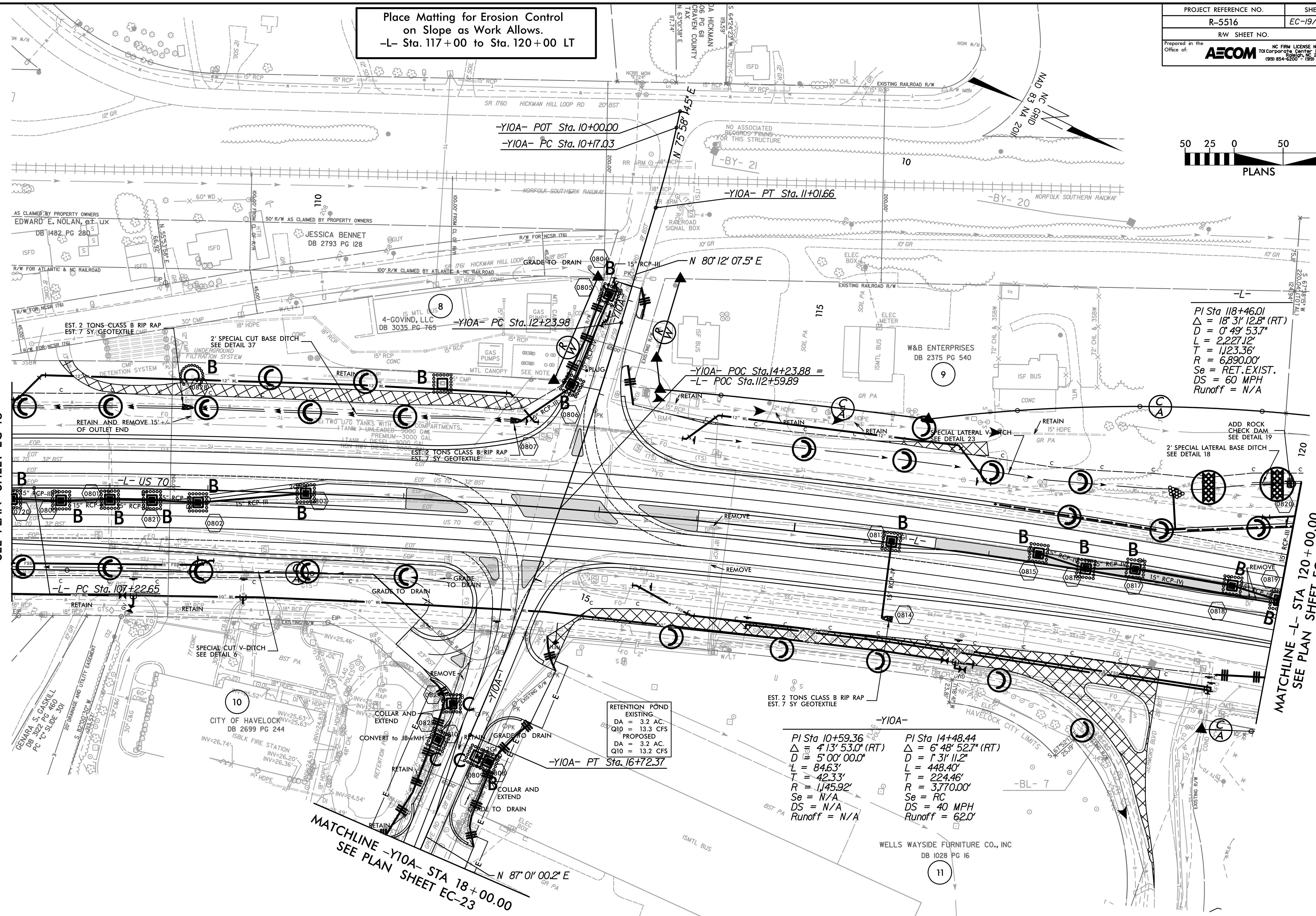


Place Matting for Erosion Control on Slope as Work Allows.
 -L- Sta. 117+00 to Sta. 120+00 LT



MATCHLINE -L- STA 107+00.00
SEE PLAN SHEET EC-18

MATCHLINE -L- STA 120+00.00
SEE PLAN SHEET EC-20



-L-
 PI Sta. 118+46.01
 $\Delta = 18' 31'' 12.8''$ (RT)
 $D = 0' 49' 53.7''$
 $L = 2,227.12'$
 $T = 1,123.36'$
 $R = 6,890.00'$
 $Se = RET. EXIST.$
 $DS = 60 MPH$
 $Runoff = N/A$

-Y10A-
 PI Sta. 10+59.36
 $\Delta = 4' 13' 53.0''$ (RT)
 $D = 5' 00' 00.0''$
 $L = 84.63'$
 $T = 42.33'$
 $R = 1,145.92'$
 $Se = N/A$
 $DS = N/A$
 $Runoff = N/A$

PI Sta. 14+48.44
 $\Delta = 6' 48' 52.7''$ (RT)
 $D = 1' 31' 11.2''$
 $L = 448.40'$
 $T = 224.46'$
 $R = 3,770.00'$
 $Se = RC$
 $DS = 40 MPH$
 $Runoff = 62.0'$

MATCHLINE -Y10A- STA 18+00.00
SEE PLAN SHEET EC-23

- ★ PROPOSED TRAFFIC SIGNAL
- ▣ PROPOSED PAVEMENT REMOVAL
- FOR -L- PROFILE, SEE SHEET NO. 17
- FOR -Y10A- PROFILE, SEE SHEET NO. 24