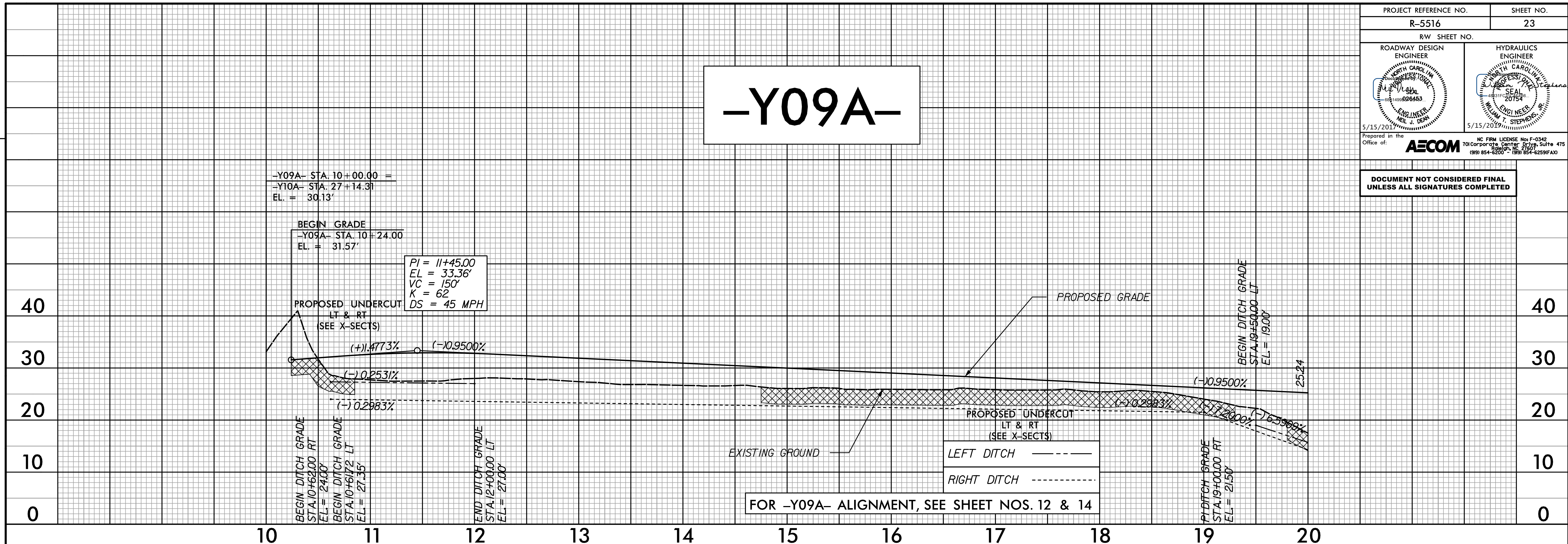
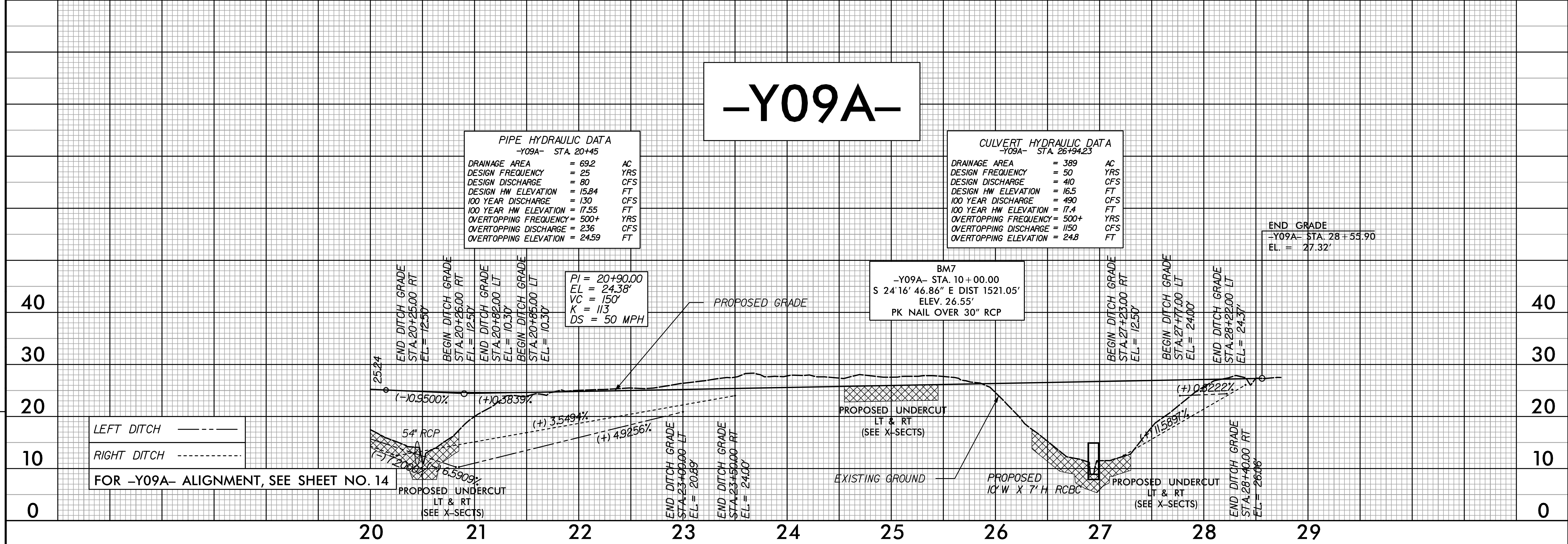


PROJECT REFERENCE NO. R-5516	SHEET NO. 23
RW SHEET NO.	
ROADWAY DESIGN ENGINEER 	HYDRAULICS ENGINEER 
Prepared in the Office of: <b>AECOM</b> 701 Corporate Center Drive, Raleigh, NC 27607 (919) 854-6200 • (919) 854-6259 FAX	

DOCUMENT NOT CONSIDERED FINAL  
UNLESS ALL SIGNATURES COMPLETED



FOR -Y09A- ALIGNMENT, SEE SHEET NOS. 12 & 14



PIPE HYDRAULIC DATA  
-Y09A- STA. 20+45

DRAINAGE AREA	= 69.2	AC
DESIGN FREQUENCY	= 25	YRS
DESIGN DISCHARGE	= 80	CFS
DESIGN HW ELEVATION	= 15.84	FT
100 YEAR DISCHARGE	= 130	CFS
100 YEAR HW ELEVATION	= 17.55	FT
OVERTOPPING FREQUENCY	= 500+	YRS
OVERTOPPING DISCHARGE	= 236	CFS
OVERTOPPING ELEVATION	= 24.59	FT

CULVERT HYDRAULIC DATA  
-Y09A- STA. 26+94.23

DRAINAGE AREA	= 389	AC
DESIGN FREQUENCY	= 50	YRS
DESIGN DISCHARGE	= 410	CFS
DESIGN HW ELEVATION	= 16.5	FT
100 YEAR DISCHARGE	= 490	CFS
100 YEAR HW ELEVATION	= 17.4	FT
OVERTOPPING FREQUENCY	= 500+	YRS
OVERTOPPING DISCHARGE	= 1150	CFS
OVERTOPPING ELEVATION	= 24.8	FT

BM7  
-Y09A- STA. 10+00.00  
S 24°16' 46.86" E DIST 1521.05'  
ELEV. 26.55'  
PK NAIL OVER 30" RCP

LEFT DITCH -----  
RIGHT DITCH .....  
FOR -Y09A- ALIGNMENT, SEE SHEET NO. 14

REVISIONS  
 R/W REVISION (10/16/15) - REVISED PROFILE DUE TO RE-ALIGNED -Y09A-- TH  
 Date: R:\Roadway\Proj\5516\2015\10\16\15\101615\_11.dwg  
 DATE/TIME: 11/6/15 AM