

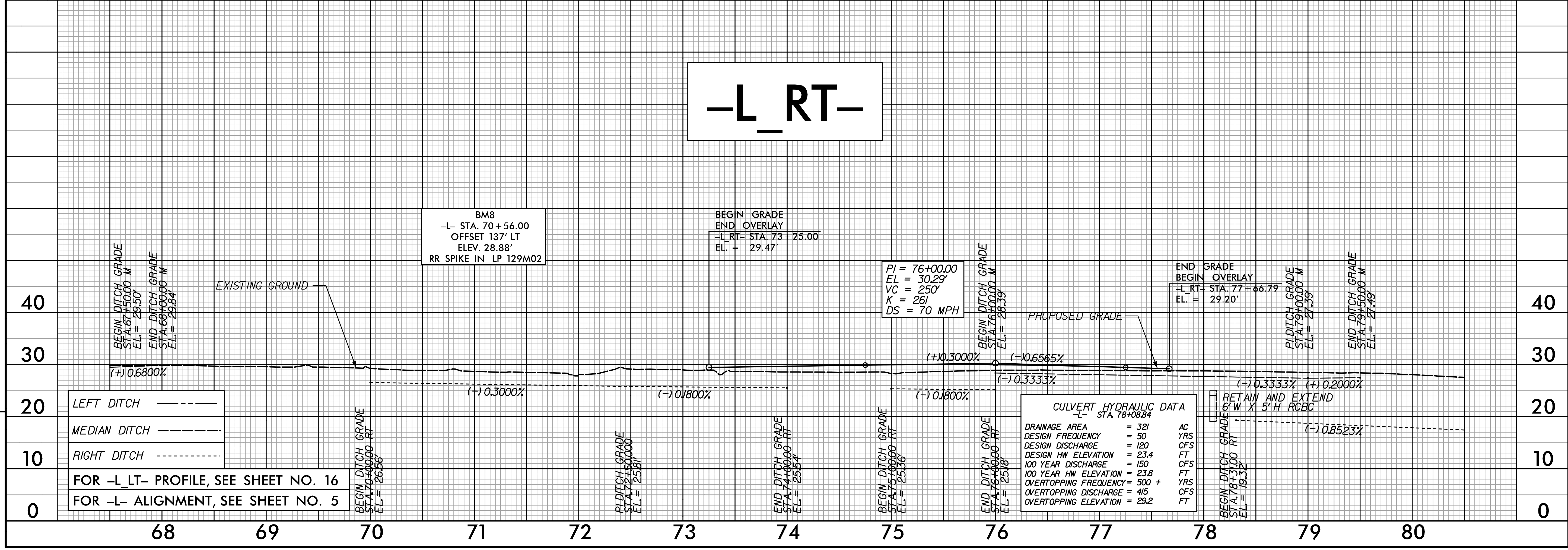
PROJECT REFERENCE NO. R-5516	SHEET NO. 15
RW SHEET NO.	
ROADWAY DESIGN ENGINEER 	HYDRAULICS ENGINEER 
Prepared in the Office of: <b>AECOM</b> NC FIRM LICENSE No. F-0342 701 Corporate Center Drive, Suite 475 Raleigh, NC 27607 (919) 854-6200 • (919) 854-6259(FAX)	

**DOCUMENT NOT CONSIDERED FINAL UNLESS ALL SIGNATURES COMPLETED**



LEFT DITCH -----  
 MEDIAN DITCH -----  
 RIGHT DITCH -----  
 FOR -L- ALIGNMENT, SEE SHEET NO. 4

# -L\_RT-



PI = 76+00.00  
 EL = 30.29'  
 VC = 250'  
 K = 261  
 DS = 70 MPH

CULVERT HYDRAULIC DATA		
-L- STA. 78+08.84		
DRAINAGE AREA	= 321	AC
DESIGN FREQUENCY	= 50	YRS
DESIGN DISCHARGE	= 120	CFS
DESIGN HW ELEVATION	= 23.4	FT
100 YEAR DISCHARGE	= 150	CFS
100 YEAR HW ELEVATION	= 23.8	FT
OVERTOPPING FREQUENCY	= 500 +	YRS
OVERTOPPING DISCHARGE	= 415	CFS
OVERTOPPING ELEVATION	= 29.2	FT

FOR -L\_RT- PROFILE, SEE SHEET NO. 16  
 FOR -L- ALIGNMENT, SEE SHEET NO. 5

REVISIONS

DSN: R:\Roadway\Proj\5516\_L\01\_L15.dgn  
 DATE/TIME: 11/26/07 AM