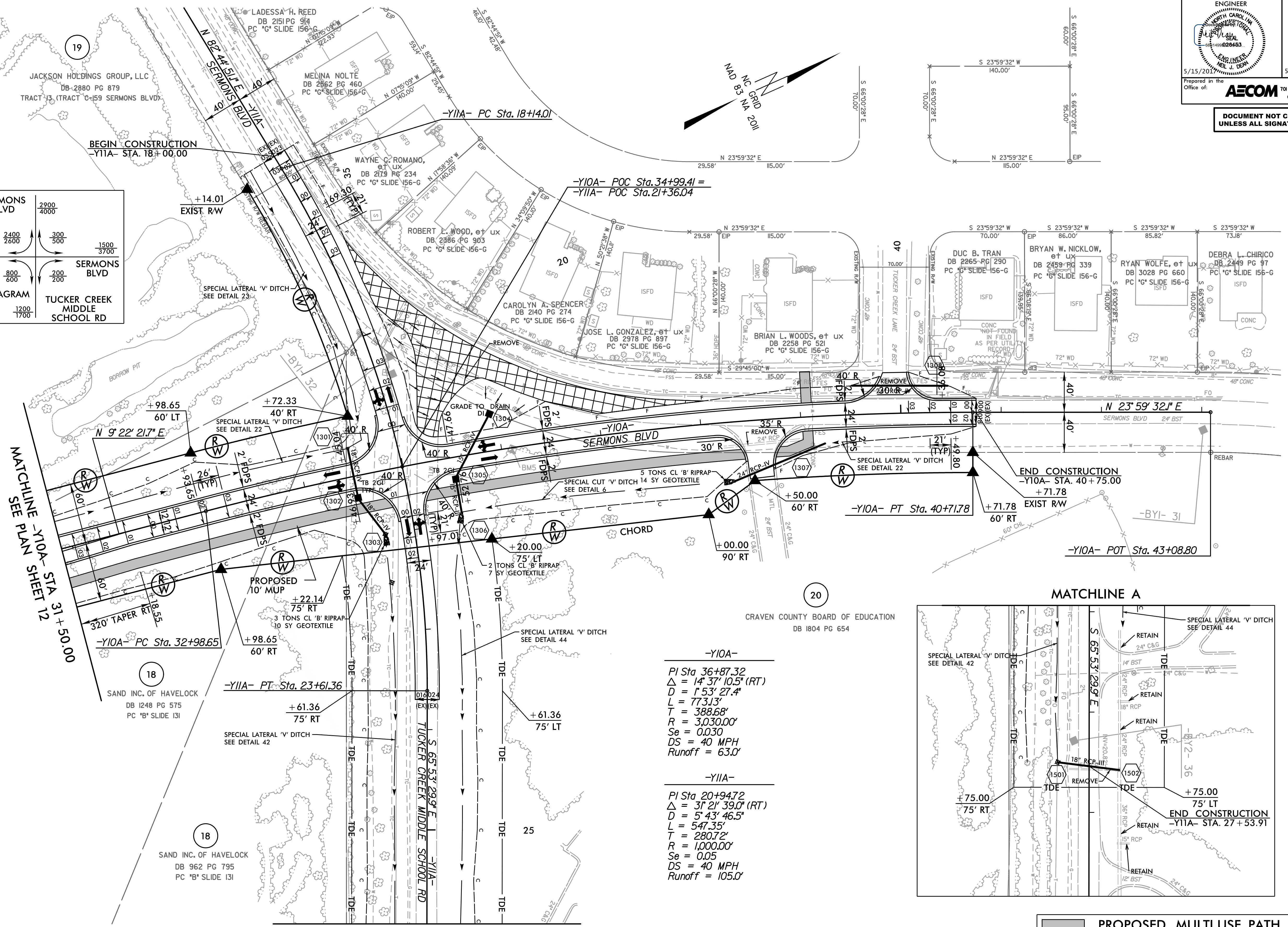
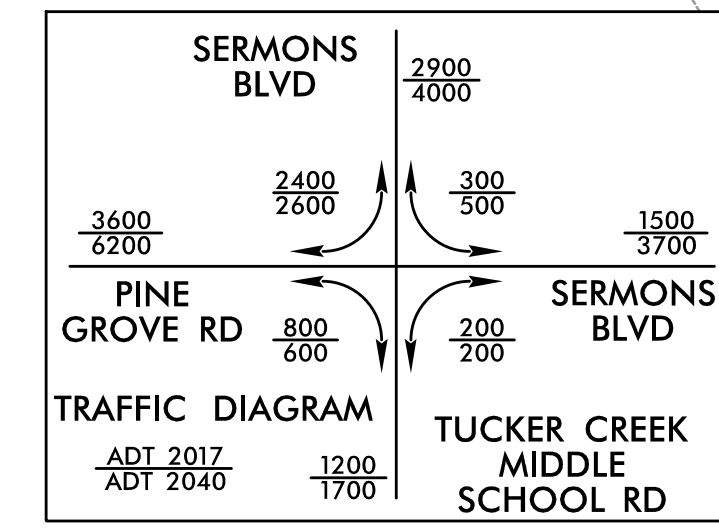


PROJECT REFERENCE NO. <b>R-5516</b>	SHEET NO. <b>13</b>
RW SHEET NO.	
ROADWAY DESIGN ENGINEER 	HYDRAULICS ENGINEER 
5/15/2017	5/15/2017
Prepared in the Office of: <b>AECOM</b> 701 Corporate Center Drive, Suite 475 Raleigh, NC 27607 (919) 854-6200 • (919) 854-6259 FAX	
<b>DOCUMENT NOT CONSIDERED FINAL UNLESS ALL SIGNATURES COMPLETED</b>	



**-Y10A-**

PI Sta 36+87.32  
 $\Delta = 14' 37" 10.5" (RT)$   
 $D = 1' 53" 27.4"$   
 $L = 773.13'$   
 $T = 388.68'$   
 $R = 3,030.00'$   
 $Se = 0.030$   
 $DS = 40 MPH$   
 $Runoff = 63.0'$

**-Y11A-**

PI Sta 20+94.72  
 $\Delta = 31' 21" 39.0" (RT)$   
 $D = 5' 43" 46.5"$   
 $L = 547.35'$   
 $T = 280.72'$   
 $R = 1,000.00'$   
 $Se = 0.05$   
 $DS = 40 MPH$   
 $Runoff = 105.0'$

	PROPOSED MULTI USE PATH
	PROPOSED PAVEMENT REMOVAL
FOR -Y10A- PROFILE, SEE SHEET NO. 25	
FOR -Y11A- PROFILE, SEE SHEET NO. 25	

REVISIONS

DATE/TIME: 11/06/05 AM  
2016: R:\Roadway\Projects\5516\5516\_r09\_sch\_13.dgn