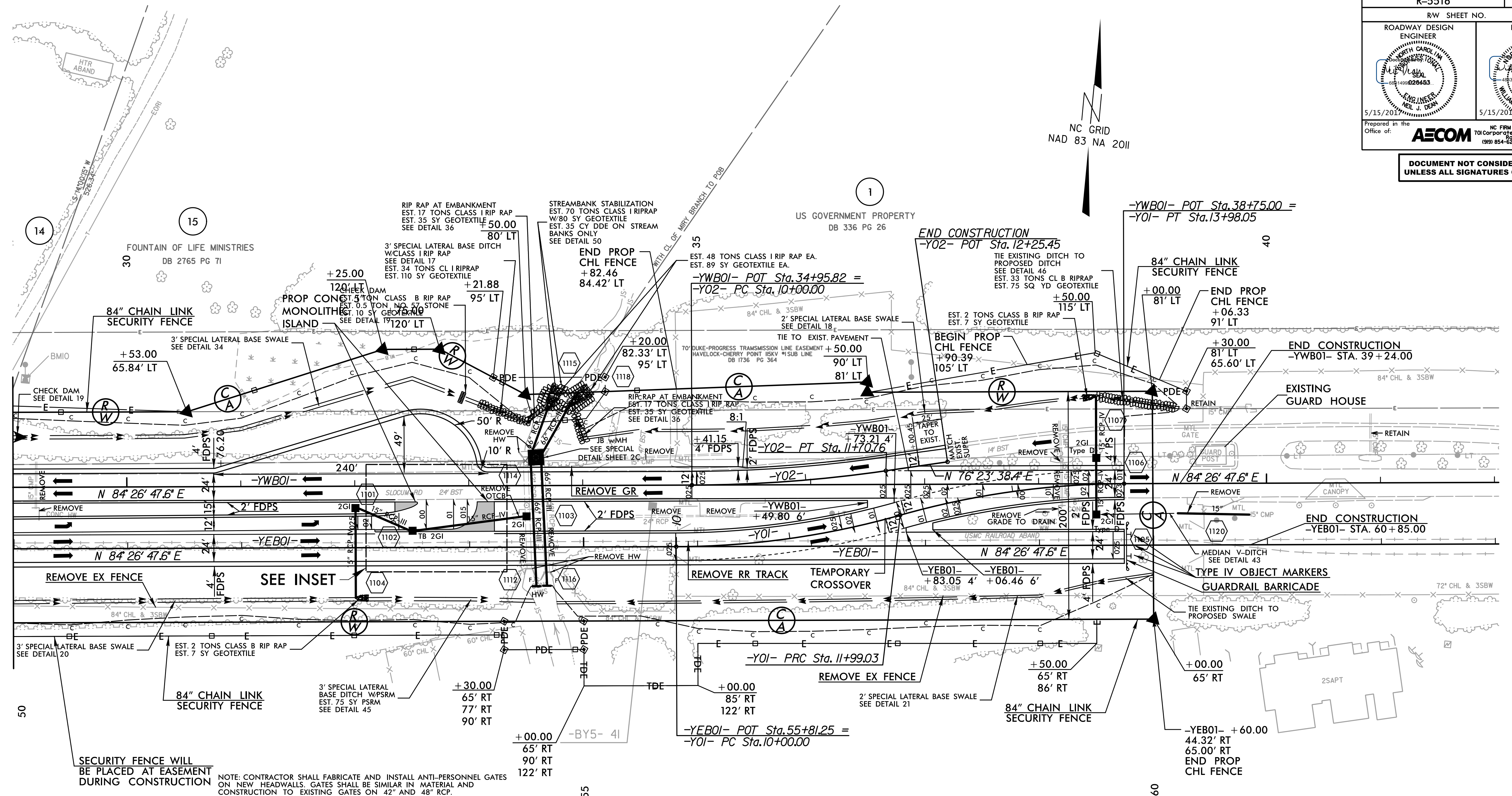


PROJECT REFERENCE NO. R-5516	SHEET NO. 11
RW SHEET NO.	
ROADWAY DESIGN ENGINEER 	HYDRAULICS ENGINEER
Prepared in the Office of: AECOM 701 Corporate Center Drive, Suite 475 Raleigh, NC 27607 (919) 854-6200 • (919) 854-6259 FAX	
DOCUMENT NOT CONSIDERED FINAL UNLESS ALL SIGNATURES COMPLETED	

NC GRID
NAD 83 NA 2011

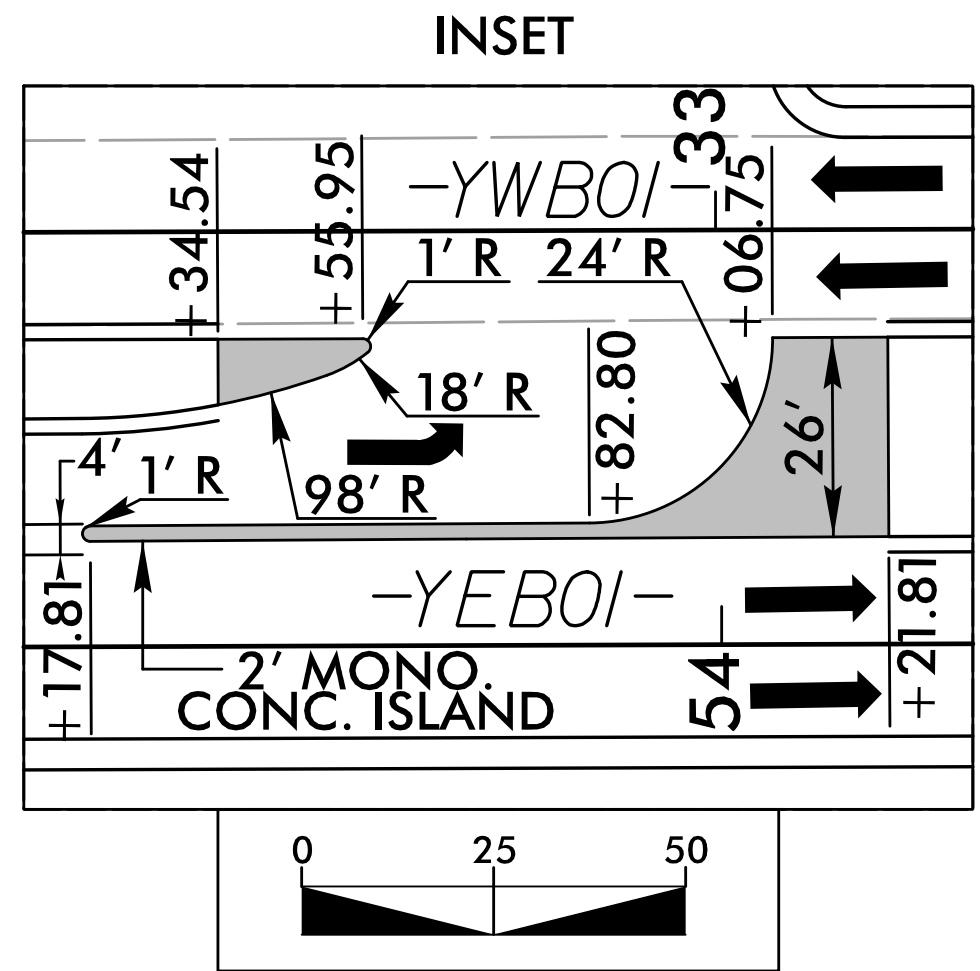
MATCHLINE -YEB01-
STA 50+00.00
SEE PLAN SHEET 10



SECURITY FENCE WILL BE PLACED AT EASEMENT DURING CONSTRUCTION

NOTE: CONTRACTOR SHALL FABRICATE AND INSTALL ANTI-PERSONNEL GATES ON NEW HEADWALLS. GATES SHALL BE SIMILAR IN MATERIAL AND CONSTRUCTION TO EXISTING GATES ON 42\"/>

NOTE: THE PROPOSED 84\"/>



US GOVERNMENT PROPERTY
DB 336 PG 26

-Y01-	-Y02-
PI Sta 11+00.14	PI Sta 12+99.16
$\Delta = 15^\circ 38' 32.9\" (LT)$	$\Delta = 15^\circ 38' 32.9\" (RT)$
$D = 7^\circ 51' 34.2\"$	$D = 7^\circ 51' 34.2\"$
$L = 199.03'$	$L = 199.03'$
$T = 100.14'$	$T = 100.14'$
$R = 729.00'$	$R = 729.00'$
$Se = VARIES$	$Se = VARIES$
$DS = 40 MPH$	$DS = 40 MPH$
$Runoff = 84.0'$	$Runoff = 84.0'$

FOR -YEB01- PROFILE, SEE SHEET NO. 21
 FOR -YWB01- PROFILE, SEE SHEET NO. 22
 FOR -Y01- PROFILE, SEE SHEET NO. 26
 FOR -Y02- PROFILE, SEE SHEET NO. 26

REVISIONS

DATE/TIME: 11/06/02 AM
 2016: R:\Roadway\Pro\NC\5516\rd_sht_11.dgn