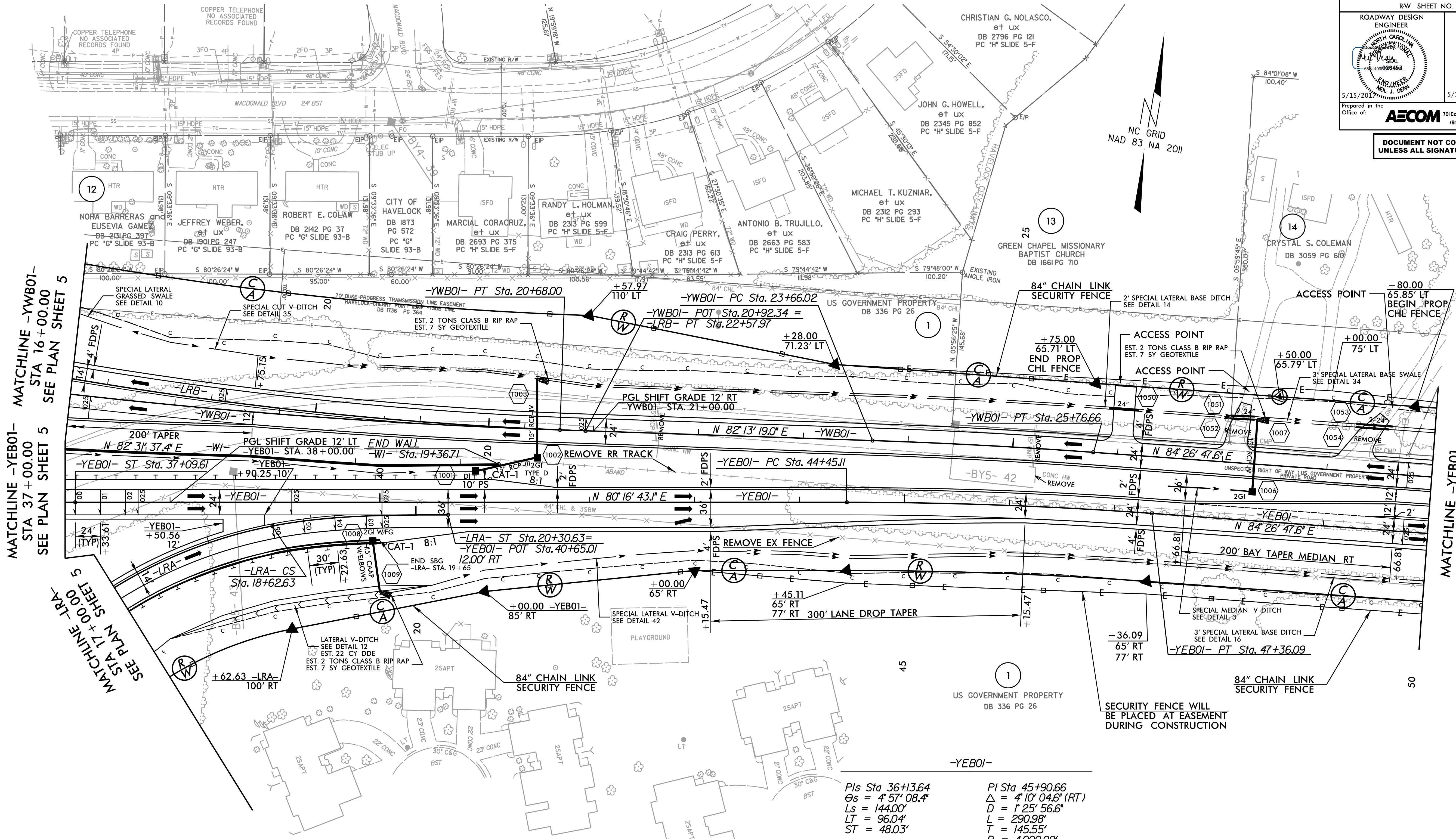


PROJECT REFERENCE NO. R-5116	SHEET NO. 10
RW SHEET NO.	
ROADWAY DESIGN ENGINEER MICHAEL T. STEPHENS 5/15/2017	HYDRAULICS ENGINEER MICHAEL T. STEPHENS 5/15/2017
Prepared in the Office of: AECOM NC FIRM LICENSE NO. F-0342 70 Corporate Center Drive, Suite 415 1909 854-6200 • 800 854-6259 FAX	

DOCUMENT NOT CONSIDERED FINAL
UNLESS ALL SIGNATURES COMPLETED



MATCHLINE -WB01- STA 16+00.00 SEE PLAN SHEET 5

MATCHLINE -YEB01- STA 37+00.00 SEE PLAN SHEET 5

MATCHLINE -LRA- STA 17+00.00 SEE PLAN SHEET 5

MATCHLINE -YEB01- STA 50+00.00 SEE PLAN SHEET 11

REVISIONS

-LRA-	-LRB-
PI Sta 16+09.21 Δ = 89° 38' 18.4" (RT) D = 12' 54' 16.0" L = 694.63' T = 441.21' R = 444.00' Se = 0.08 DS = 40 MPH Runoff = 168.0'	PI Sta 19+18.82 Δ = 10° 50' 23.1" Ls = 168.00' LT = 112.21' ST = 56.19'
	PI Sta 19+49.36 Δ = 9° 40' 46.0" (LT) D = 1' 33' 52.1" L = 618.70' T = 310.09' R = 3,662.29' Se = RC DS = 40 MPH Runoff = 121.5'

-LRA-	-LRB-
PIs Sta 36+3.64 Δs = 4° 57' 08.4" Ls = 144.00' LT = 96.04' ST = 48.03'	PI Sta 45+90.66 Δ = 4° 10' 04.6" (RT) D = 1' 25' 56.6" L = 290.98' T = 145.55' R = 4,000.00' Se = 0.025 DS = 40 MPH Runoff = 144.0'
	-YEB01-
PI Sta 17+02.36 Δ = 6° 59' 27.5" (LT) D = 0' 57' 17.3" L = 732.19' T = 366.55' R = 6,000.83' Se = 0.025 DS = 40 MPH Runoff = N/A	PI Sta 24+71.35 Δ = 2° 13' 28.6" (RT) D = 1' 03' 22.1" L = 210.64' T = 105.33' R = 5,425.00' Se = 0.025 DS = 40 MPH Runoff = N/A

FOR -W1- PROFILE, SEE SHEET NO. W1

FOR -LRA- PROFILE, SEE SHEET NO. 18

FOR -LRB- PROFILE, SEE SHEET NO. 19

FOR -WB01- PROFILE, SEE SHEET NO. 22

FOR -YEB01- PROFILE, SEE SHEET NOS. 20 & 21

ALL DRIVEWAY TURNOUT RADII ARE 10'
UNLESS OTHERWISE NOTED

DATE/TIME: 10/30/17 AM
DWG: R:\Roadway\Proj\5516_rdw\plan_10.dgn