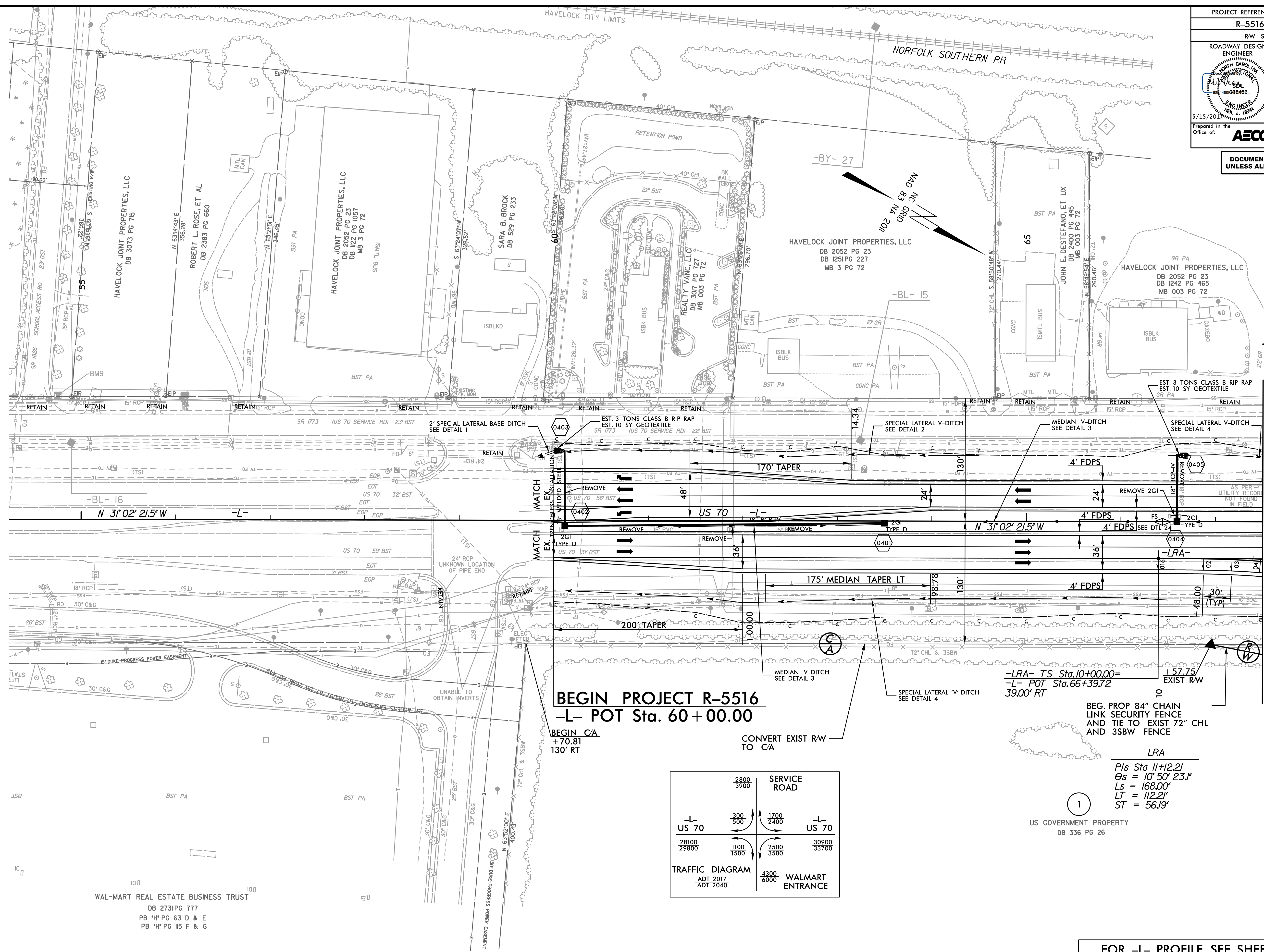


PROJECT REFERENCE NO. <b>R-5516</b>	SHEET NO. <b>4</b>
RW SHEET NO.	
ROADWAY DESIGN ENGINEER <i>[Signature]</i> 5/15/2011	HYDRAULICS ENGINEER <i>[Signature]</i> 5/15/2011
Prepared in the Office of: <b>AECOM</b> NC FIRM LICENSE No F-0342 70 Corporate Center Drive, Suite 415 Raleigh, NC 27603 (919) 854-6200 (F) (919) 854-6259(FAX)	

DOCUMENT NOT CONSIDERED FINAL  
UNLESS ALL SIGNATURES COMPLETED

REVISIONS



MATCHLINE -L- STA 67 + 50.00  
SEE PLAN SHEET 5

**BEGIN PROJECT R-5516**  
**-L- POT Sta. 60+00.00**

BEGIN CA  
+ 70.81  
130' RT

CONVERT EXIST RW  
TO CA

-LRA- TS Sta. 10+00.00 =  
-L- POT Sta. 66+39.72  
39.00' RT

BEG. PROP 84" CHAIN  
LINK SECURITY FENCE  
AND TIE TO EXIST 72" CHL  
AND 35BW FENCE

LRA  
Pis Sta 11+12.21  
Os = 10' 50" 23.1"  
Ls = 168.00'  
LT = 112.21'  
ST = 56.19'

US GOVERNMENT PROPERTY  
DB 336 PG 26

	2800 3900	SERVICE ROAD	
-L- US 70	300 500	1700 2400	-L- US 70
28100 29800	1100 1500	2500 3500	30900 33700
TRAFFIC DIAGRAM ADI 2017 ADT 2040		4300 6000	WALMART ENTRANCE

WAL-MART REAL ESTATE BUSINESS TRUST  
DB 2731 PG 777  
PB 'H' PG 63 D & E  
PB 'H' PG 115 F & G

FOR -L- PROFILE, SEE SHEET NO. 15  
FOR -LRA- PROFILE, SEE SHEET NO. 18

DATE/TIME: 10/25/11 AM  
DWG: R:\Roadway\Proj\R-5516\_rdw\plan\_04.dwg