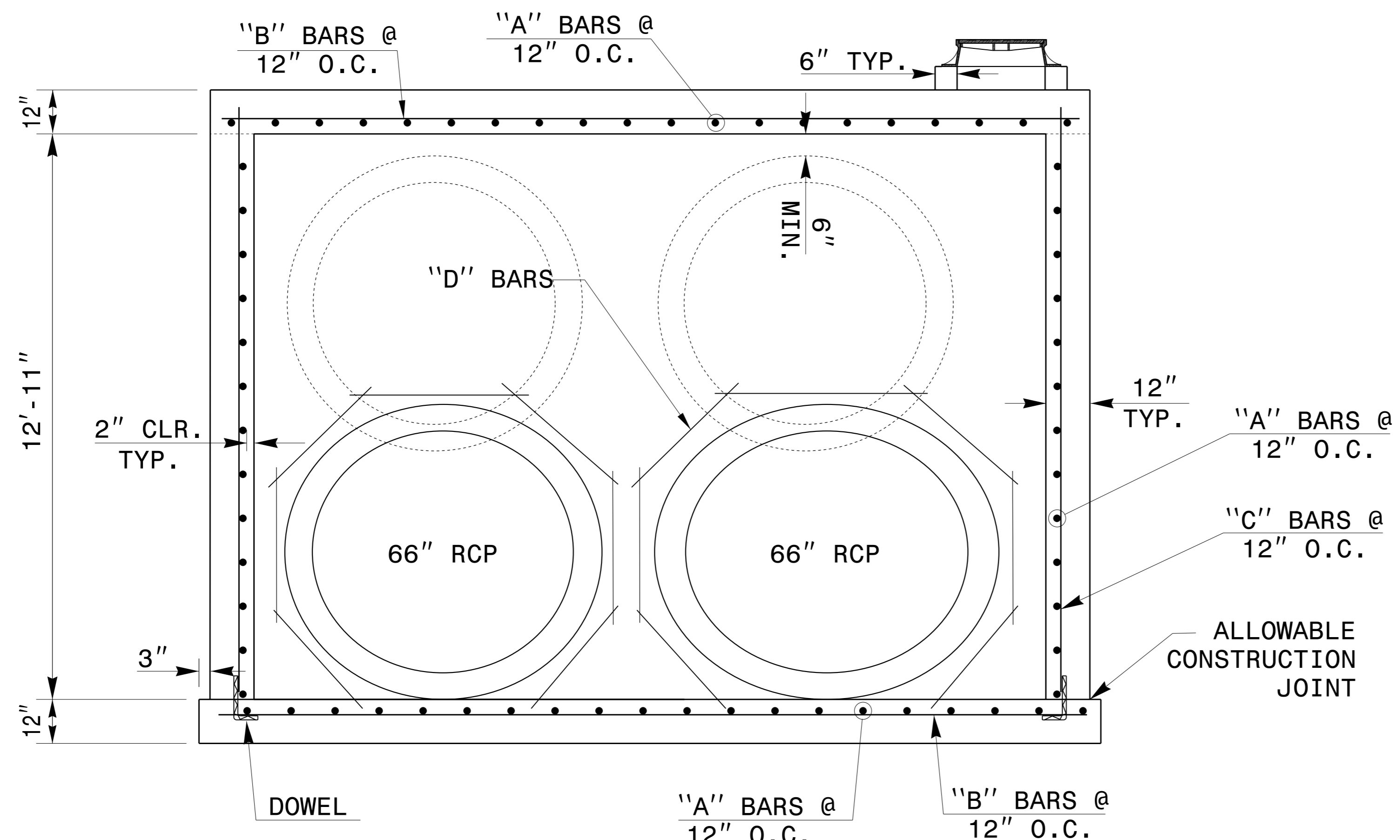


PLAN



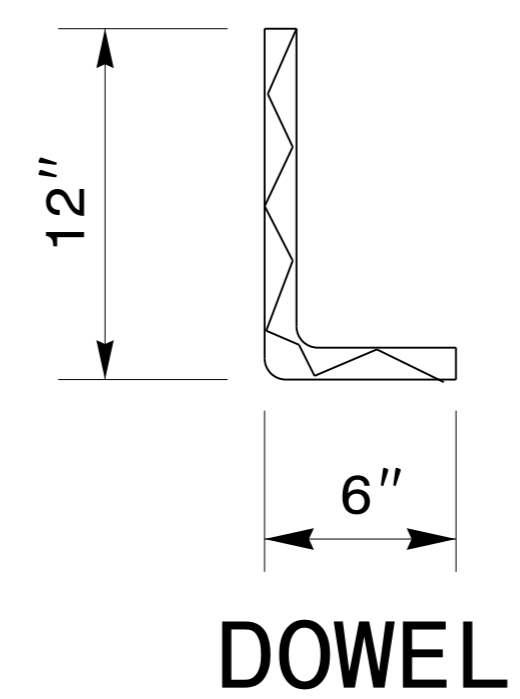
SECTION A-A

GENERAL NOTES:

- CONSTRUCT THE BASE SLAB BY FORMING.
- SEE STD. DWG. 840.00 FOR CONSTRUCTION OF BASE SLAB IF PIPE IS SET INTO BASE SLAB.
- USE CLASS 'B' CONCRETE THROUGHOUT.
- CONSTRUCTION OPTIONS: MONOLITHIC POUR, 2" KEYWAY, OR #5 BAR DOWELS AT 12" CENTERS AS DIRECTED BY THE ENGINEER.
- CUT, BEND OR RELOCATE REINFORCING STEEL TO POSITION PIPE AS DIRECTED BY THE ENGINEER.
- CHAMFER ALL EXPOSED CORNERS 1".
- CONTRACTOR MAY ADJUST DIMENSIONS OF BOX AS FIELD CONDITIONS DICTATE OR AS DIRECTED BY THE ENGINEER.

BILL OF MATERIAL

BAR	NO.	SIZE	LENGTH	WEIGHT
A	70	#5	5'-8"	414
B	14	#5	19'-8"	288
C	14	#5	13'-6"	198
D	30	#5	4'-0"	126
TOTAL REINF. STEEL (lbs.)				1026
CLASS "B" CONC. (cu. yds.)				30.8
NO DEDUCTIONS FOR PIPES				



5/15/2017

CONTRACTS STANDARDS AND DEVELOPMENT UNIT
Office 919-707-6950 FAX 919-250-4119

DETAIL OF SPECIAL JUNCTION BOX

ORIGINAL BY: K. KEMPF	DATE: 1-11-08
MODIFIED BY: K. KEMPF	DATE: 5-11-15
CHECKED BY:	DATE:
FILE SPEC.: \\kkempf\english\R5516\jbttwo66wMH.dgn	

C:\TIME\DESIGN\CON\JOB\USER\NAME\$\$\$\$\$