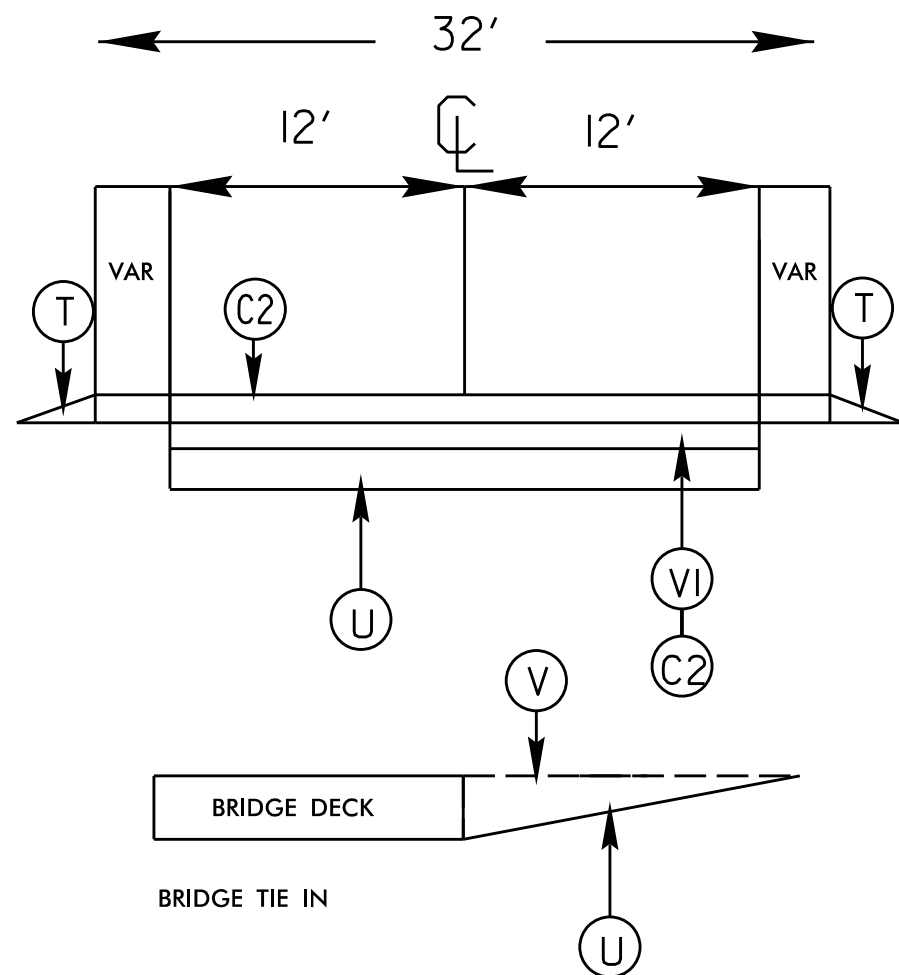
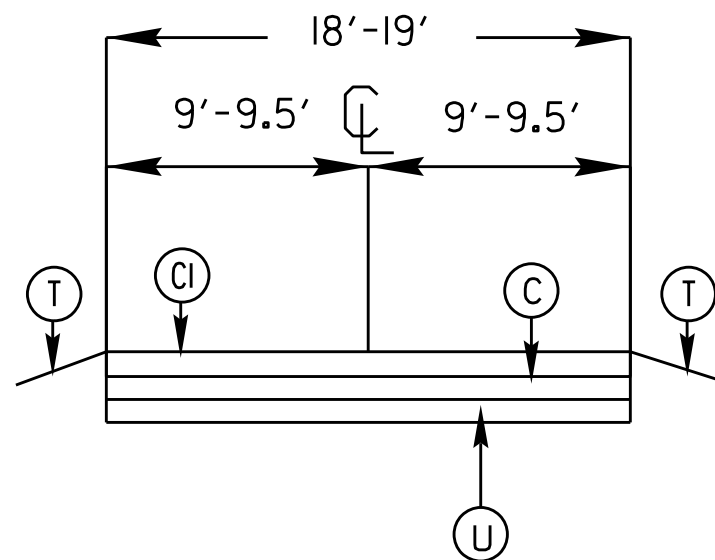


PROJECT REFERENCE NO.		SHEET NO.	
2018CPT.14.07.10201.		4	
STATE PROJECT	F.A. PROJECT NO.	DESCRIPTION	
2018CPT.14.07.20201.1			

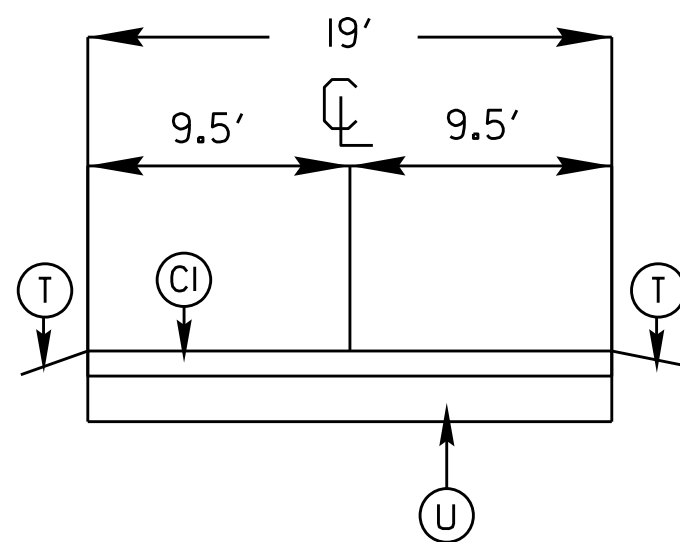
TYPICAL 1



TYPICAL 2



TYPICAL 3



SURFACING SCHEDULE

ITEM NO	DESCRIPTION
C	PROP. APPROX. 3/4" ASPHALT CONCRETE SURFACE COURSE, (LEVELING) TYPE SF9.5A AT AN AVERAGE RATE OF 82.5 LBS.PER.SQ.YD
C1	PROP. APPROX. 1 1/4" ASPHALT CONCRETE SURFACE COURSE, TYPE SF9.5A AT AN AVERAGE RATE OF 137.5 LBS.PER.SQ.YD
C2	PROP. APPROX. 1 1/2" ASPHALT CONCRETE SURFACE COURSE, TYPE S9.5B AT AN AVERAGE RATE OF 168 LBS.PER.SQ.YD
T	SHOULDER RECONSTRUCTION
V	MILLED ASPHALT PAVEMENT 0 TO 1 1/2" IN DEPTH IN LOCATIONS AS DIRECTED BY PROJECT ENGINEER
VI	MILLED ASPHALT PAVEMENT 1 1/2" IN DEPTH IN LOCATIONS AS DIRECTED BY PROJECT ENGINEER
U	EXISTING ASPHALT