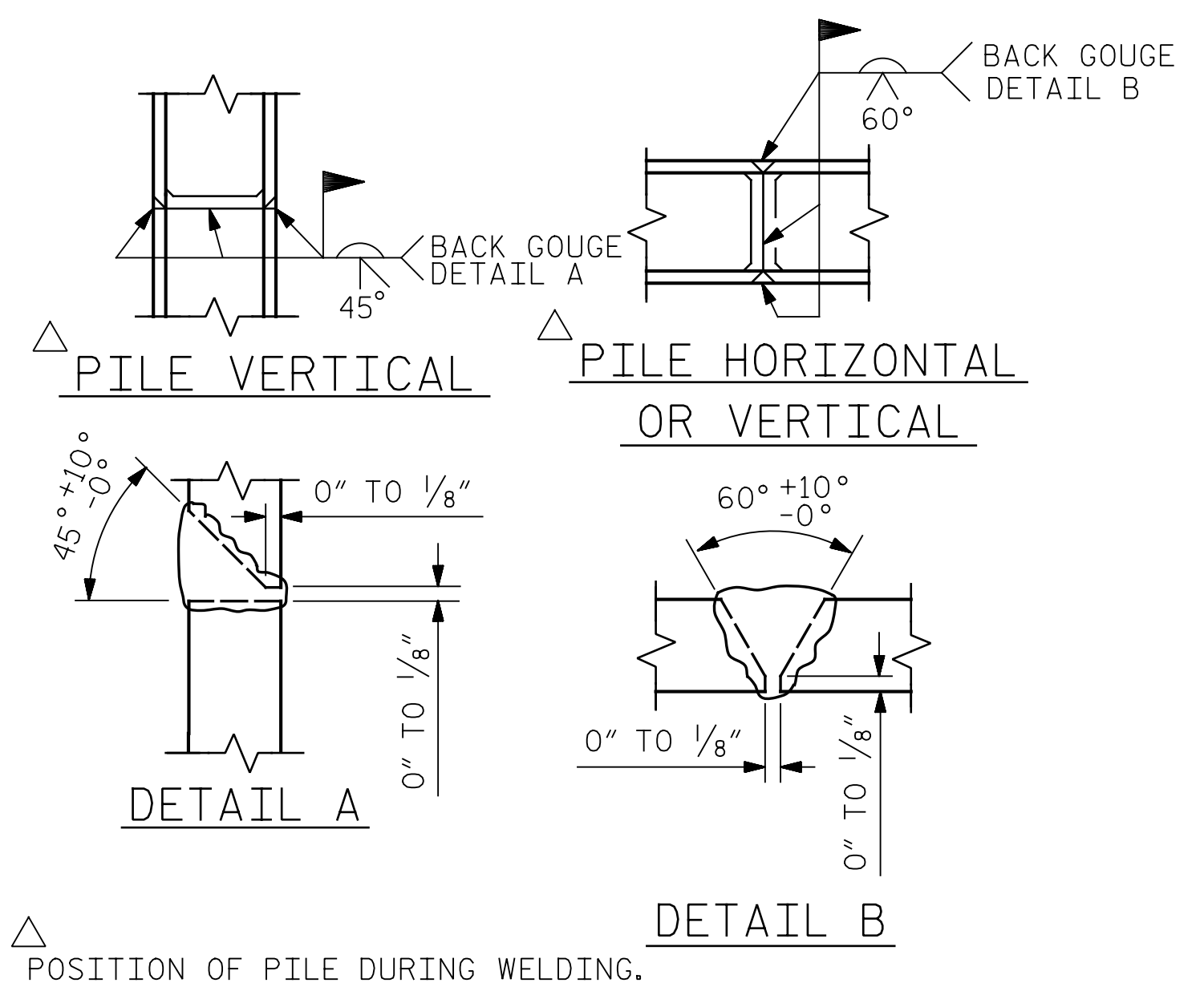


BAGGED STONE AND PIPE SHALL BE PLACED IMMEDIATELY AFTER COMPLETION OF END BENT EXCAVATION. PIPE MAY BE EITHER CONCRETE, CORRUGATED STEEL, CORRUGATED ALUMINUM ALLOY, OR CORRUGATED PLASTIC. PERFORATED PIPE WILL NOT BE ALLOWED.

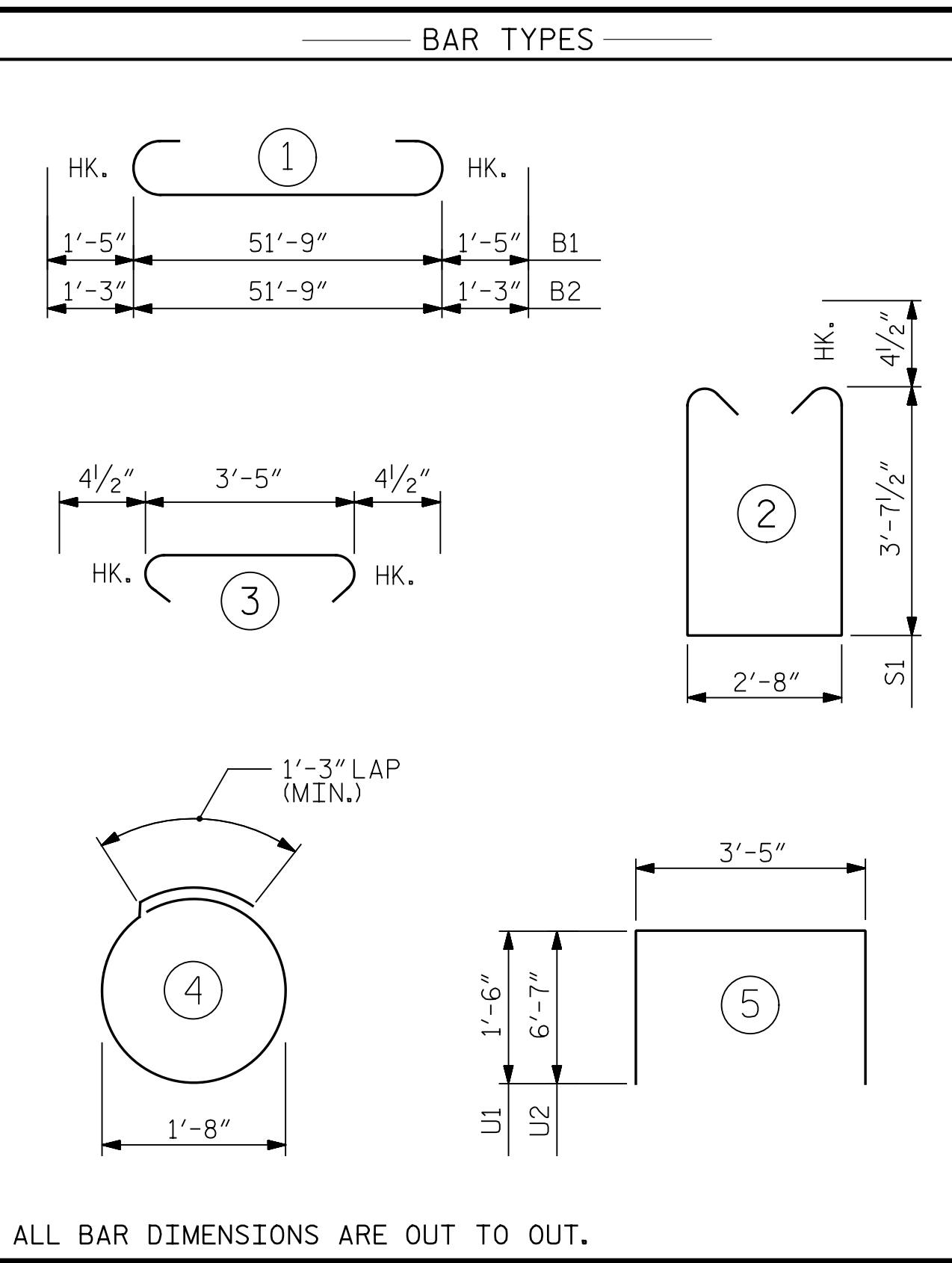
BAGGED STONE SHALL REMAIN IN PLACE UNTIL THE ENGINEER DIRECTS THAT IT BE REMOVED. THE CONTRACTOR SHALL REMOVE AND DISPOSE OF SILT ACCUMULATIONS AT BAGGED STONE WHEN SO DIRECTED BY THE ENGINEER. BAGS SHALL BE REMOVED AND REPLACED WHENEVER THE ENGINEER DETERMINES THAT THEY HAVE DETERIORATED AND LOST THEIR EFFECTIVENESS.

NO SEPARATE PAYMENT WILL BE MADE FOR THIS WORK AND THE ENTIRE COST OF THIS WORK SHALL BE INCLUDED IN THE UNIT CONTRACT PRICE BID FOR THE SEVERAL PAY ITEMS.

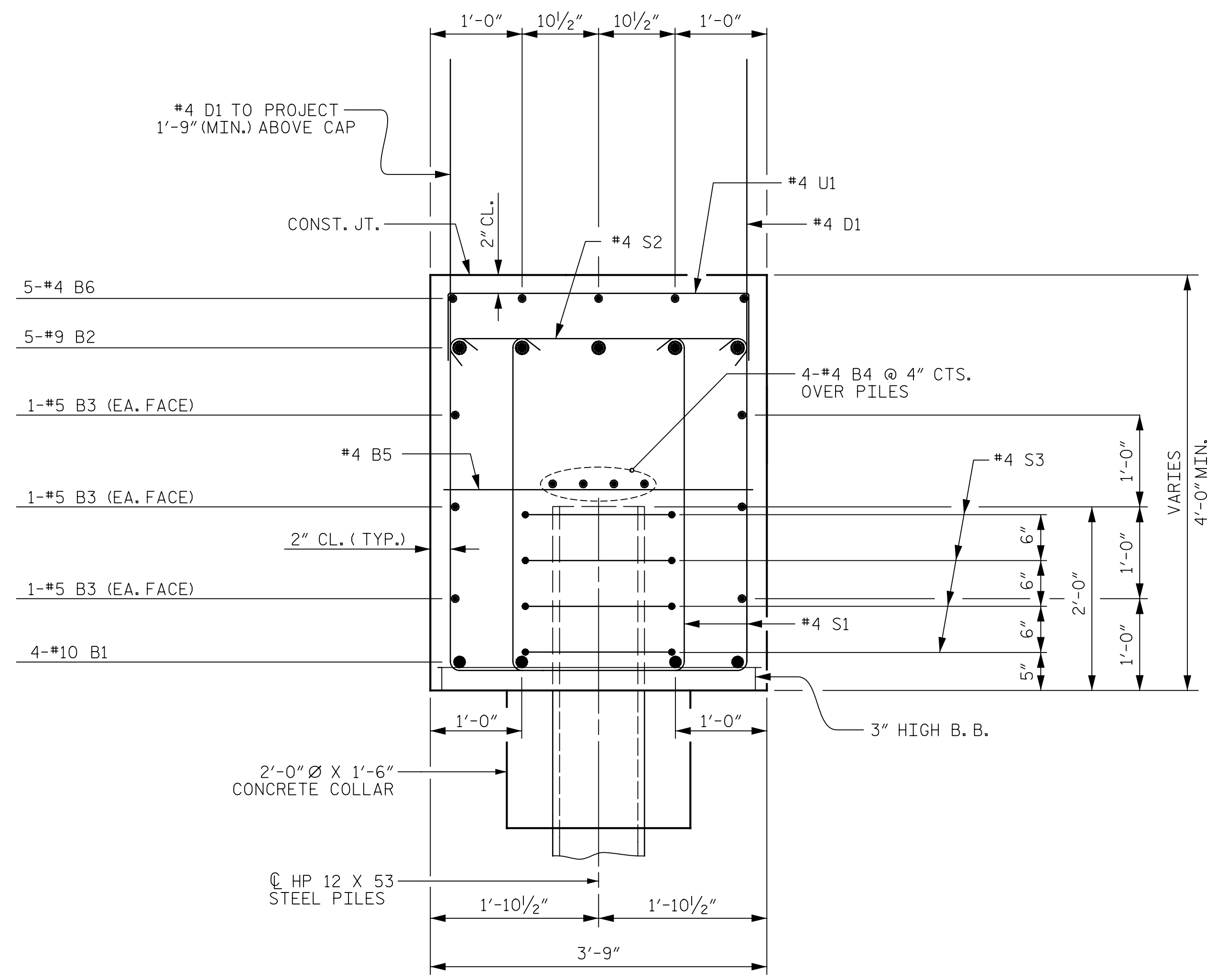
TEMPORARY DRAINAGE AT END BENT



PILE SPLICE DETAILS

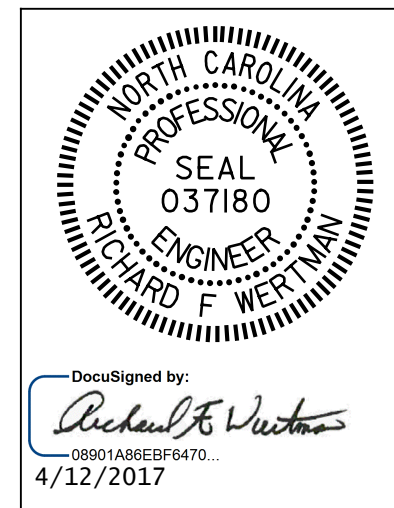


BILL OF MATERIAL					
END BENT #1					
BAR	No.	SIZE	TYPE	LENGTH	WEIGHT
B1	4	#10	1	54'-7"	940
B2	5	#9	1	54'-3"	922
B3	6	#5	STR	51'-9"	324
B4	8	#4	STR	27'-1"	145
B5	13	#4	STR	3'-5"	30
B6	5	#4	STR	19'-0"	63
B7	1	#4	STR	7'-7"	5
B8	1	#4	STR	7'-9"	5
B9	1	#4	STR	7'-11"	5
B10	1	#4	STR	8'-0"	5
B11	1	#4	STR	8'-2"	5
D1	84	#4	STR	6'-5"	360
H1	23	#5	STR	15'-3"	366
H2	23	#5	STR	15'-2"	364
H3	22	#5	STR	15'-0"	344
H4	22	#5	STR	15'-1"	346
K6	12	#4	STR	2'-8"	21
S1	108	#4	2	10'-8"	770
S2	54	#4	3	4'-2"	150
S3	44	#4	4	6'-6"	191
U1	13	#4	5	6'-5"	56
U2	6	#4	5	16'-7"	66
V1	28	#5	STR	11'-3"	329
V2	28	#5	STR	10'-6"	307



SECTION A-A

PROJECT NO. B-4447
BURKE COUNTY
 STATION: 25+85.40 -L-
15+67.23 -Y-
 SHEET 4 OF 4



STATE OF NORTH CAROLINA
 DEPARTMENT OF TRANSPORTATION
 RALEIGH
 SUBSTRUCTURE
 INTEGRAL
 END BENT #1
 EASTBOUND LANE

DRAWN BY : T.J. KIRSCHBAUM DATE : 1/6/16
 CHECKED BY : R.F. WERTMAN DATE : 4/6/16
 DESIGN ENGINEER OF RECORD : R.F. WERTMAN DATE : 4/6/16

PLANS PREPARED BY:
Gannett Fleming
 Excellence Delivered As Promised

2610 Wycliff Road
 Suite 102
 Raleigh, NC 27607-3073
 (919) 420-7660
 NC Lic. No. F-0270

DOCUMENT NOT CONSIDERED FINAL UNLESS ALL SIGNATURES COMPLETED

REVISIONS					
NO.	BY:	DATE:	NO.	BY:	DATE:
1			3		
2			4		

SHEET NO. S02-20
 TOTAL SHEETS 28