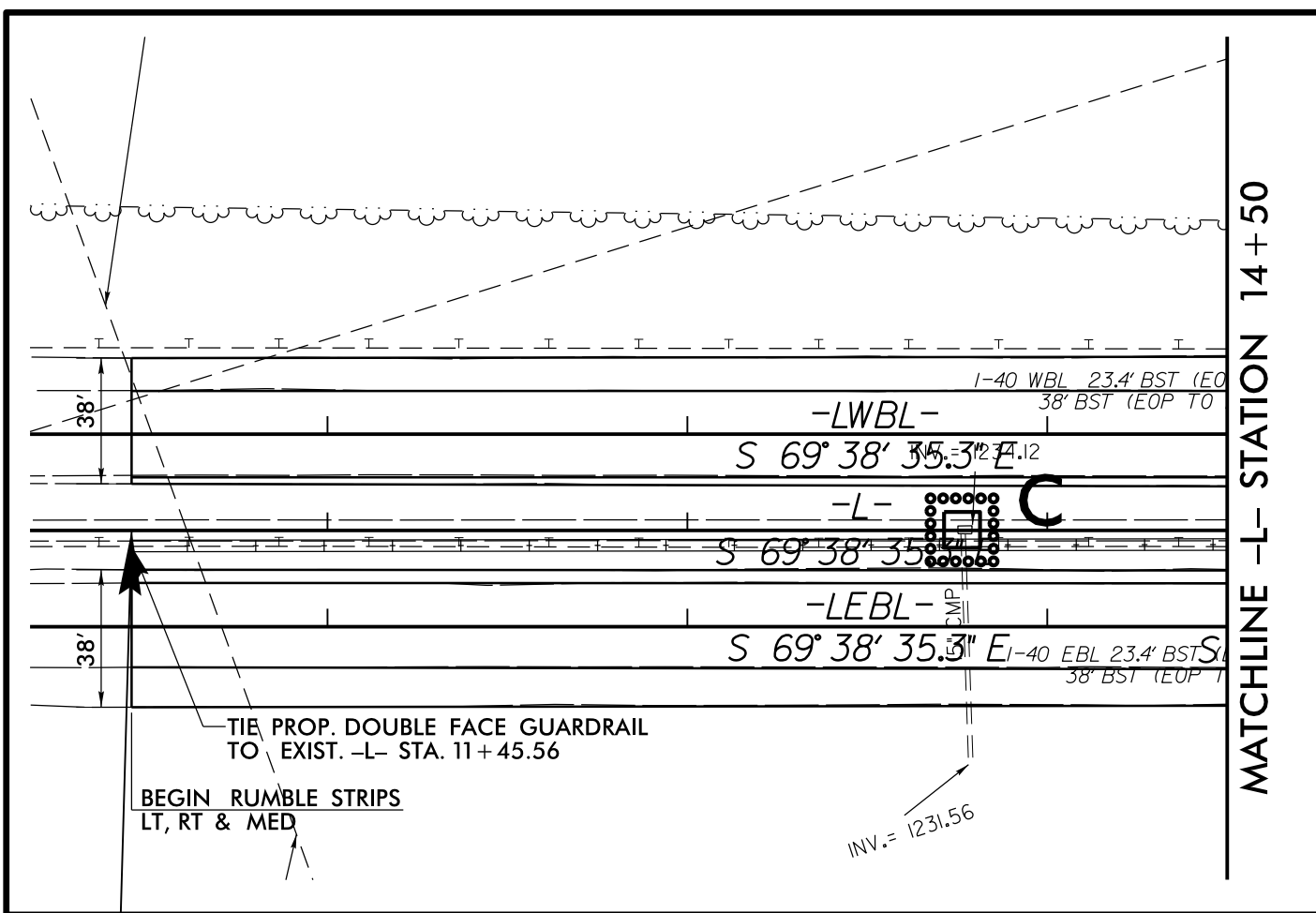


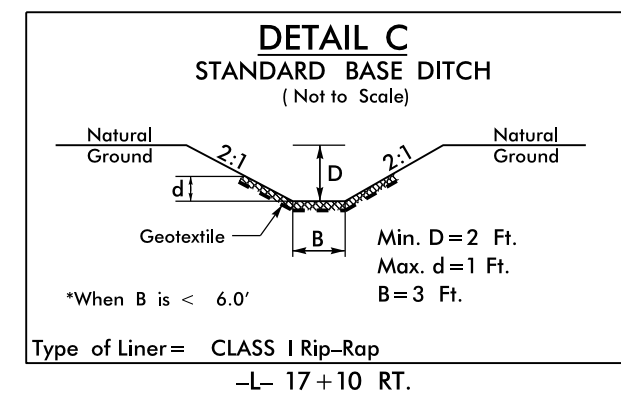
PROJECT REFERENCE NO.	SHEET NO.
B-4447	EC-II/CONST.4
RW SHEET NO.	4
ROADWAY DESIGN ENGINEER	HYDRAULICS ENGINEER

INSET A



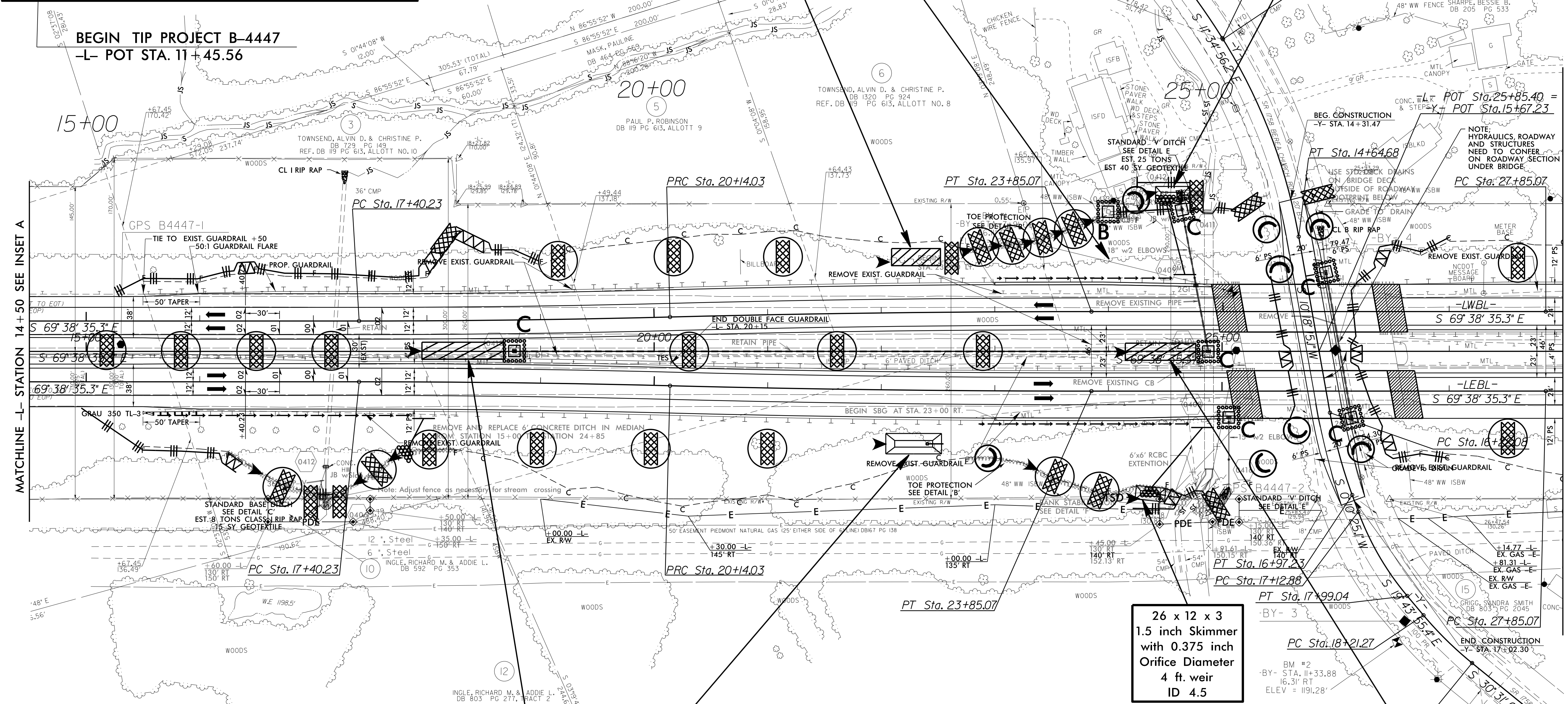
BEGIN TIP PROJECT B-4447
-L- POT STA. 11+45.56

Place Matting for Erosion Control
on Slope as Work Allows.
Sta. 23+00 to Sta. 25+00 LT & RT



43 x 15 x 3
ID 4.1

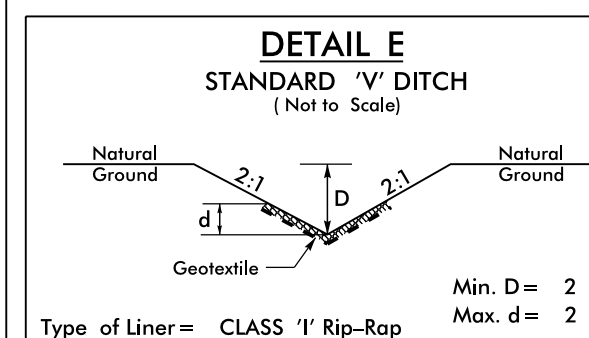
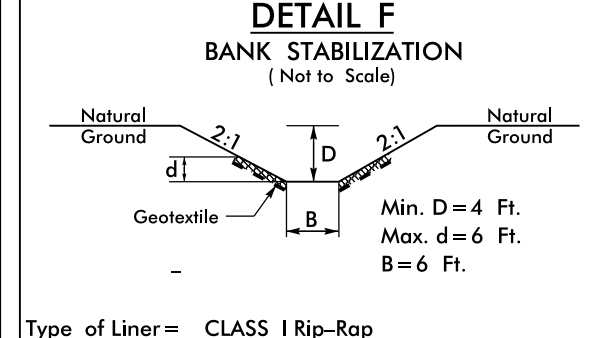
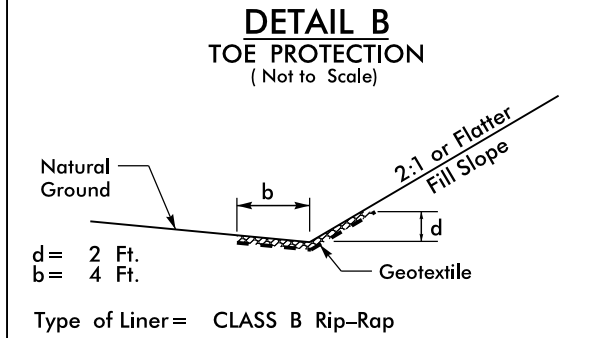
30 x 15 x 3
1.5 inch Skimmer
with 0.5 inch
Orifice Diameter
4 ft. weir
ID 4.2



MATCHLINE -L- STATION 14+50 SEE INSET A

MATCHLINE -L- STATION 28+00 SEE SHEET 5

49 x 18 x 3
1.5 inch Skimmer
with 0.750 inch
Orifice Diameter
4 ft. weir
ID 4.4



26 x 12 x 3
1.5 inch Skimmer
with 0.375 inch
Orifice Diameter
4 ft. weir
ID 4.5

72 x 15 x 2
ID 4.3

62 x 15 x 3
ID 4.6

FROM -L- STA. 16+25 TO STA. 18+50 RT.
FROM -L- STA. 23+50 TO STA. 24+50 LT.
FROM -L- STA. 22+75 TO STA. 24+68 RT.
FROM -L- STA. 32+25 TO STA. 33+00 RT.

-L- STA. 24+50 RT.
EST. 40 TONS CLASS I
EST. 60 SY GEOTEXTILE
30 CY DDE

-L- STA. 24+75 LT.
-L- STA. 25+00 RT.

8/17/99

I:\FEB-2017\0223\Drawings\B4447-EC-Inst-4.dgn