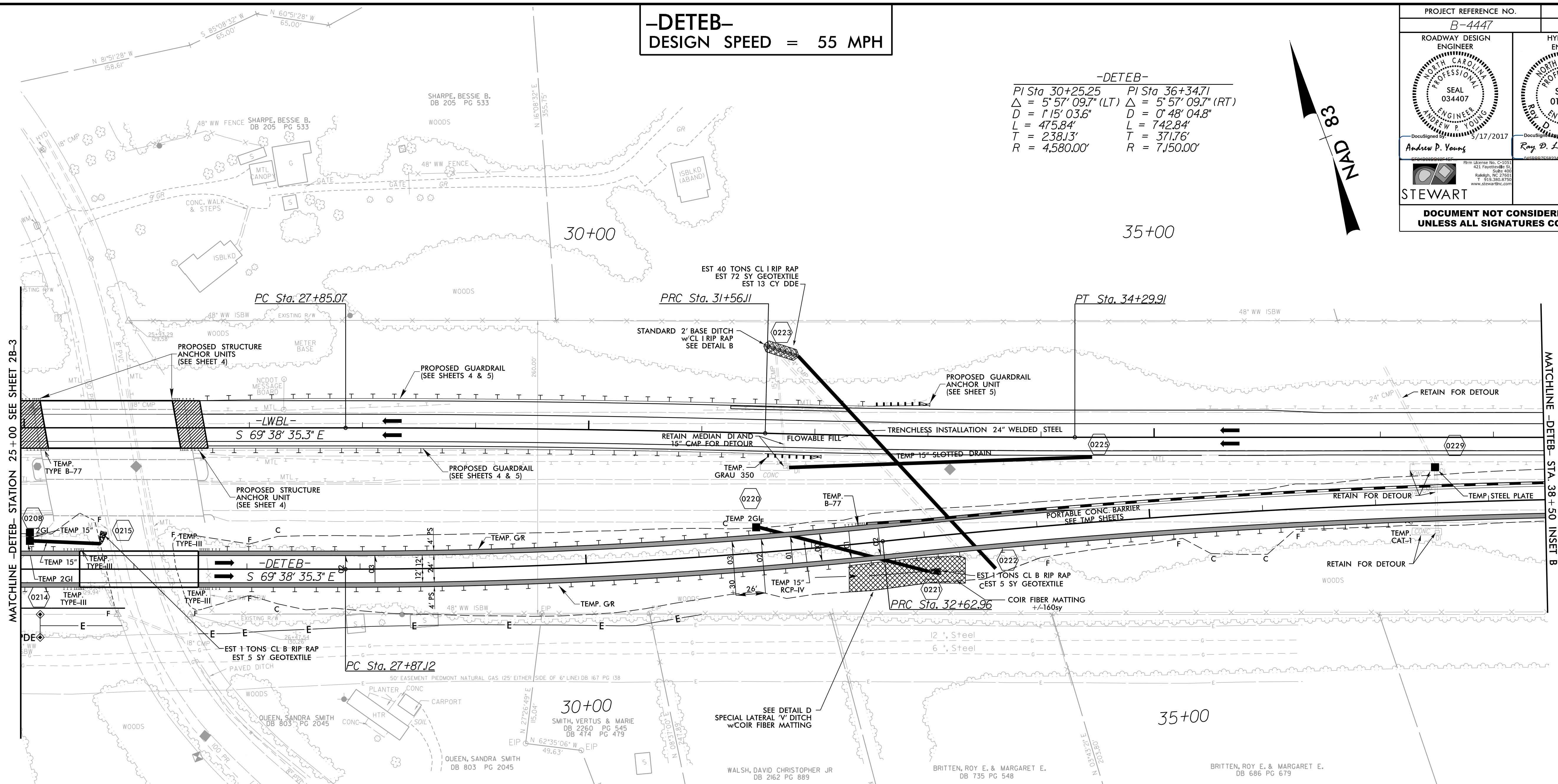


**-DETEB-**  
**DESIGN SPEED = 55 MPH**

**-DETEB-**  
 PI Sta 30+25.25 PI Sta 36+34.71  
 $\Delta = 5^\circ 57' 09.7" (LT)$   $\Delta = 5^\circ 57' 09.7" (RT)$   
 $D = 115' 03.6"$   $D = 0' 48' 04.8"$   
 $L = 475.84'$   $L = 742.84'$   
 $T = 238.13'$   $T = 371.76'$   
 $R = 4,580.00'$   $R = 7,150.00'$

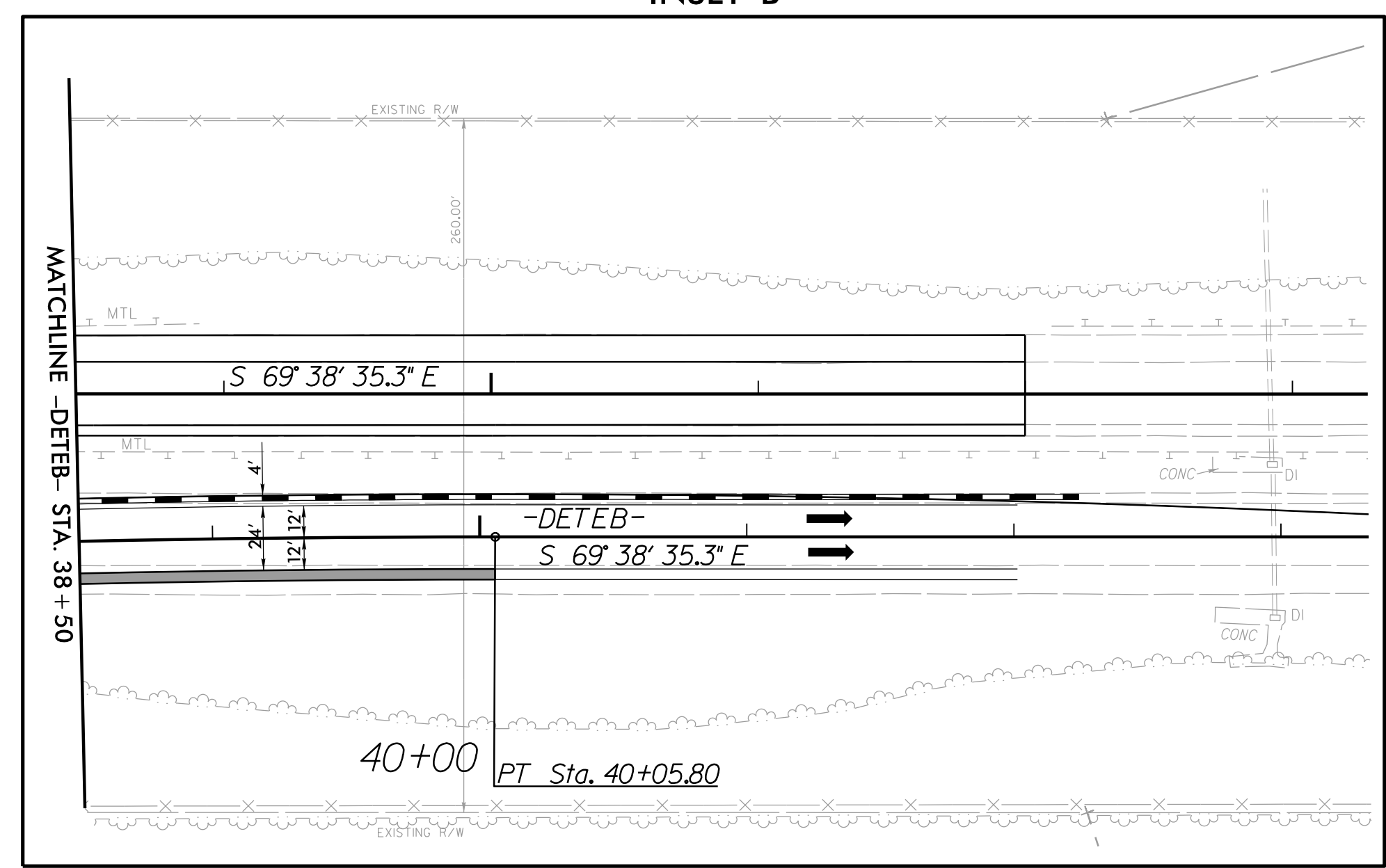
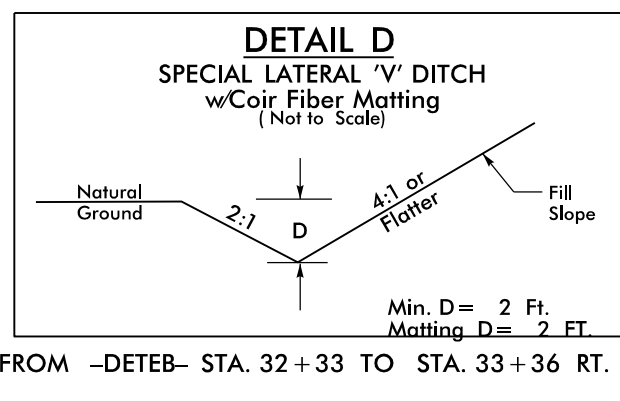
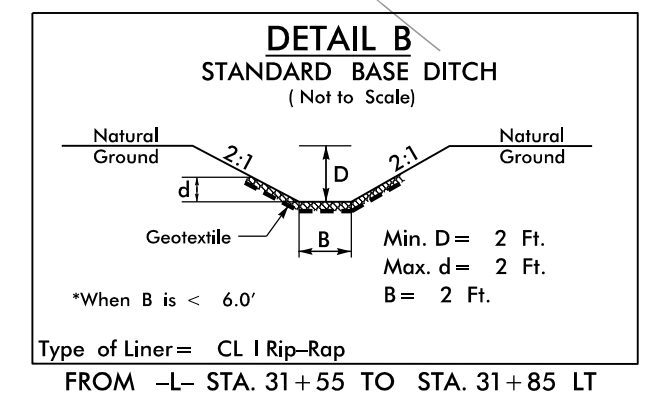
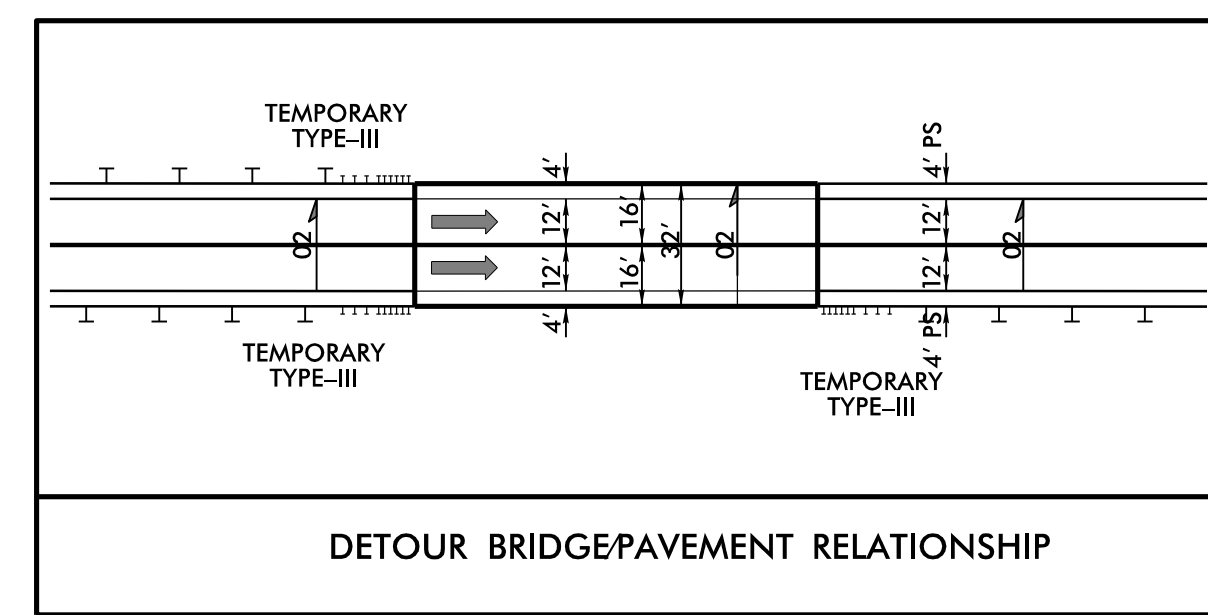
PROJECT REFERENCE NO. B-4447	SHEET NO. 2B-4
ROADWAY DESIGN ENGINEER ANDREW P. YOUNG SEAL 034407 NORTH CAROLINA PROFESSIONAL ENGINEER DocuSigned by: Andrew P. Young 5/17/2017	HYDRAULICS ENGINEER RAY D. LOVINGOOD SEAL 019775 NORTH CAROLINA PROFESSIONAL ENGINEER DocuSigned by: Ray D. Lovingood 5/18/2017
STEWART	
DOCUMENT NOT CONSIDERED FINAL UNLESS ALL SIGNATURES COMPLETED	



REVISIONS

MATCHLINE -DETEB- STATION 25+00 SEE SHEET 2B-3

MATCHLINE -DETEB- STA. 38+50 INSET B



SEE SHEET 5 FOR -LWBL- PLAN VIEW  
 SEE SHEET 6 FOR -LWBL- PROFILE  
 SEE SHEET 8 FOR -DETEB- PROFILE  
 SEE SHEET S01-1 THRU S01-28 FOR -LWBL- STRUCTURE PLANS

5/8/2017 10:44:47 AM Rdwy\_dete\_2B-4.dgn  
 USER: JREK