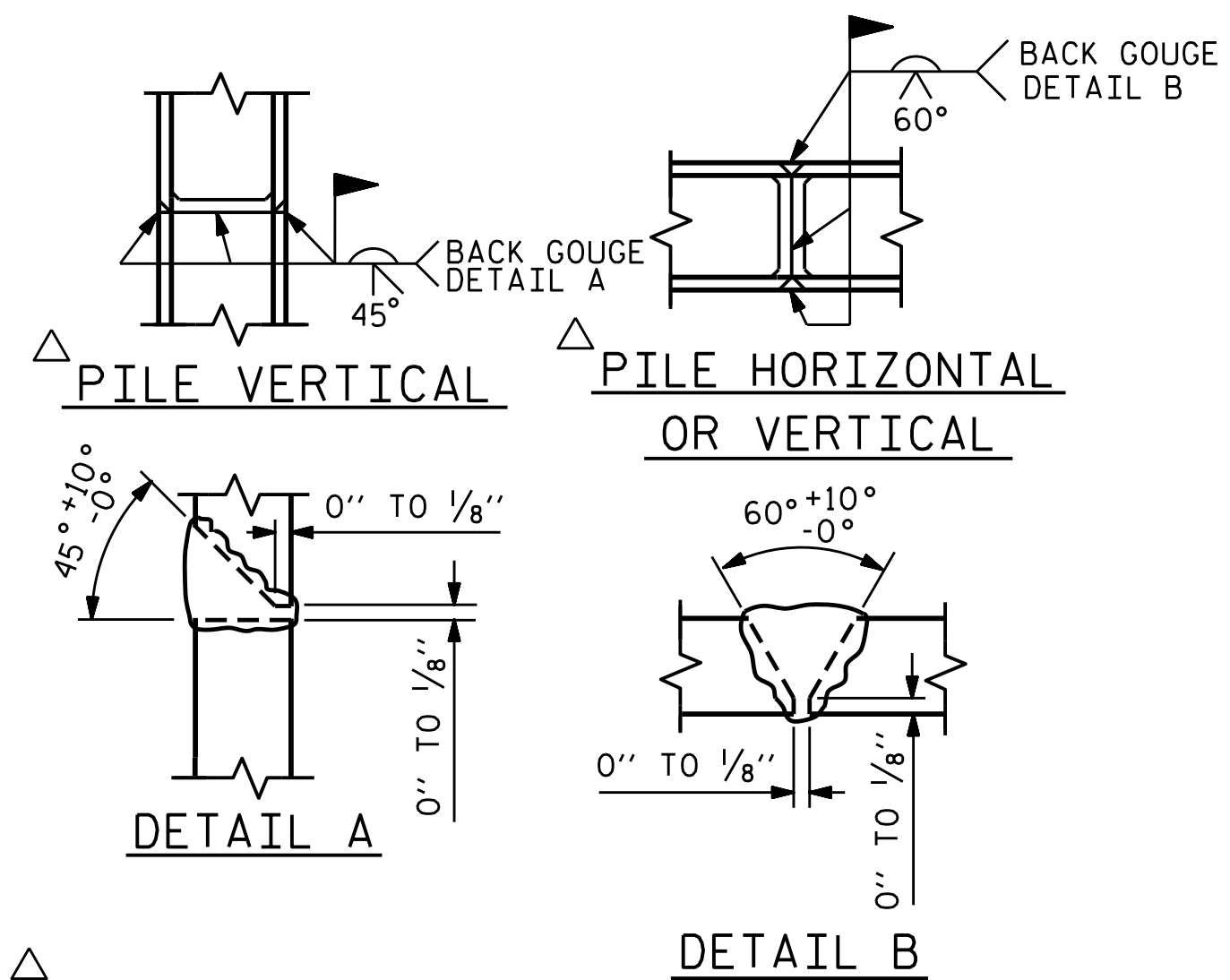


BAGGED STONE AND PIPE SHALL BE PLACED IMMEDIATELY AFTER COMPLETION OF END BENT EXCAVATION. PIPE MAY BE EITHER CONCRETE, CORRUGATED STEEL, CORRUGATED ALUMINUM ALLOY, OR CORRUGATED PLASTIC. PERFORATED PIPE WILL NOT BE ALLOWED.

BAGGED STONE SHALL REMAIN IN PLACE UNTIL THE ENGINEER DIRECTS THAT IT BE REMOVED. THE CONTRACTOR SHALL REMOVE AND DISPOSE OF SILT ACCUMULATIONS AT BAGGED STONE WHEN SO DIRECTED BY THE ENGINEER. BAGS SHALL BE REMOVED AND REPLACED WHENEVER THE ENGINEER DETERMINES THAT THEY HAVE DETERIORATED AND LOST THEIR EFFECTIVENESS.

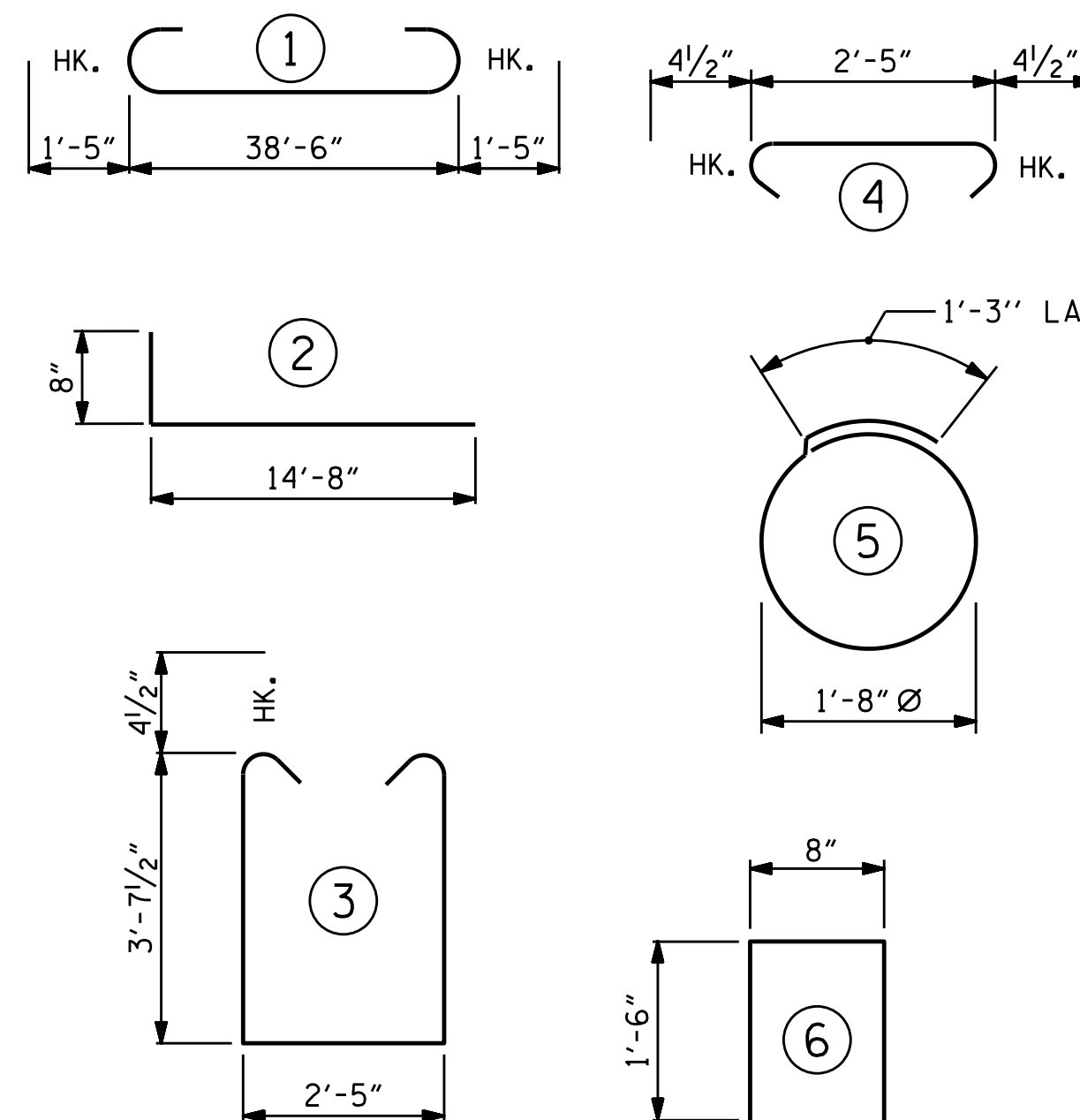
NO SEPARATE PAYMENT WILL BE MADE FOR THIS WORK AND THE ENTIRE COST OF THIS WORK SHALL BE INCLUDED IN THE UNIT CONTRACT PRICE BID FOR THE SEVERAL PAY ITEMS.

TEMPORARY DRAINAGE AT END BENT



PILE SPLICE DETAILS

BAR TYPES



ALL BAR DIMENSIONS ARE OUT TO OUT.

END BENT 1		END BENT 2	
HP 12 X 53 STEEL PILES	NO: 7	HP 12 X 53 STEEL PILES	NO: 7
LIN. FT.= 105		LIN. FT.= 105	
STEEL PILE POINTS	7 EA.	STEEL PILE POINTS	7 EA.
PILE DRIVING EQUIPMENT SETUP FOR HP 12 X 53 STEEL PILES	7 EA.	PILE DRIVING EQUIPMENT SETUP FOR HP 12 X 53 STEEL PILES	7 EA.

BILL OF MATERIAL

FOR ONE END BENT

BAR	NO.	SIZE	TYPE	LENGTH	WEIGHT
B1	8	#10	STR	41'-4"	1423
B2	28	#4	STR	20'-7"	385
B3	10	#4	STR	2'-5"	16
D1	22	#8	STR	2'-3"	132
H1	64	#6	STR	15'-4"	1474
K1	12	#4	STR	2'-11"	23
K2	12	#4	STR	20'-7"	165
S1	38	#4	STR	10'-5"	264
S2	38	#4	STR	3'-2"	80
S3	28	#4	STR	6'-6"	122
U1	33	#4	STR	3'-8"	81
V1	76	#4	STR	7'-8"	389
V2	66	#4	STR	5'-9"	254

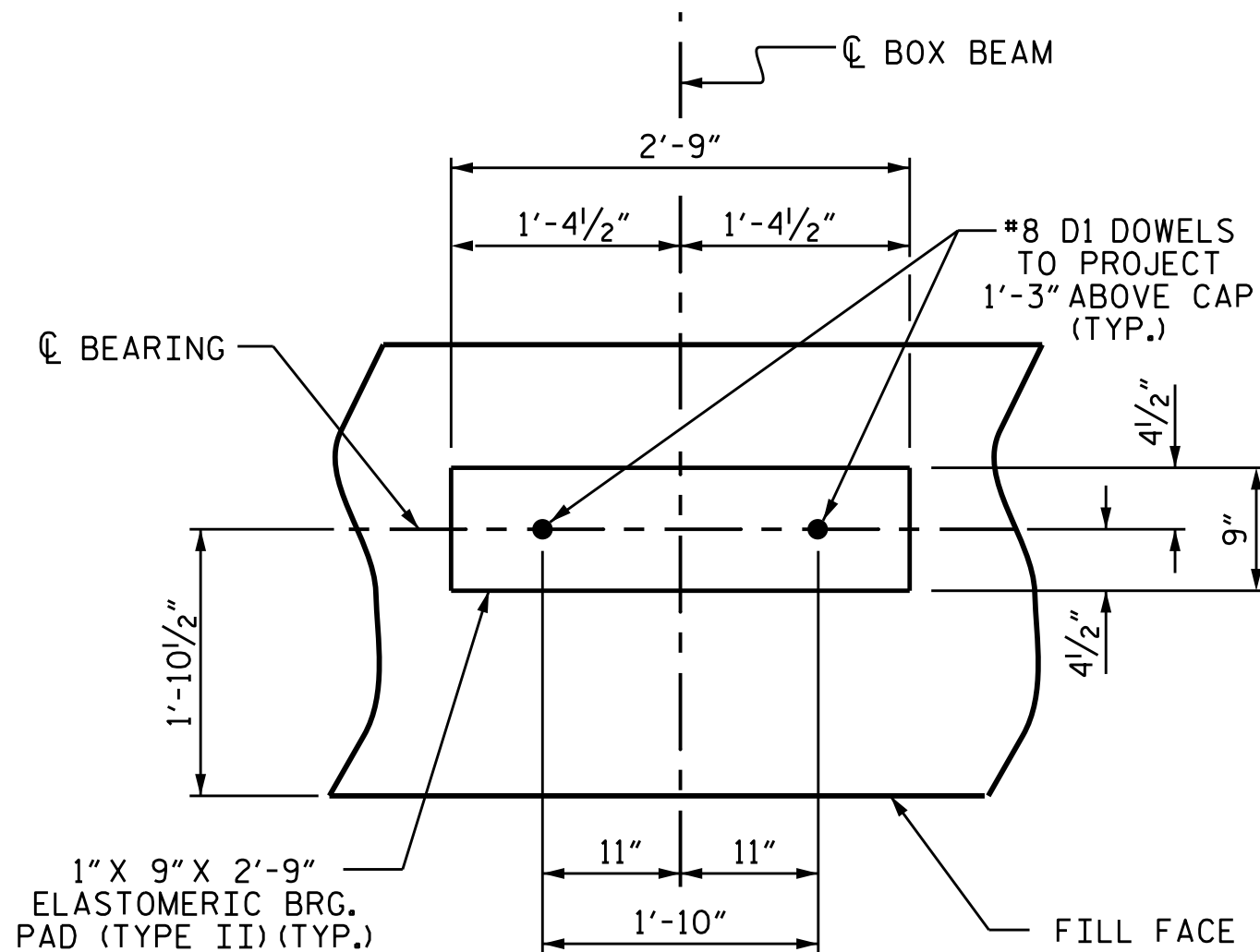
REINFORCING STEEL (FOR ONE END BENT) LBS. 4808

CLASS A CONCRETE BREAKDOWN (FOR ONE END BENT)

POUR #1 CAP, LOWER PART OF WINGS & COLLARS C.Y. 21.3

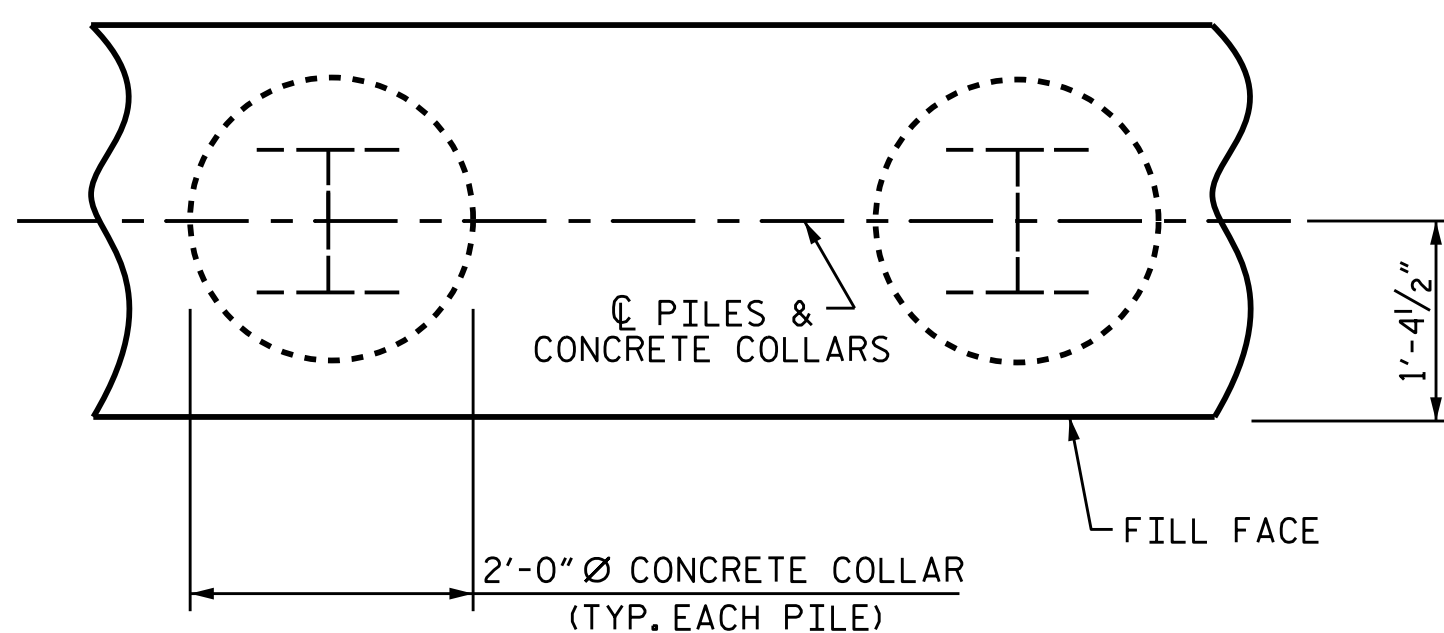
POUR #2 BACKWALL & UPPER PART OF WINGS C.Y. 7.7

TOTAL CLASS A CONCRETE C.Y. 29.0



DETAIL "A"

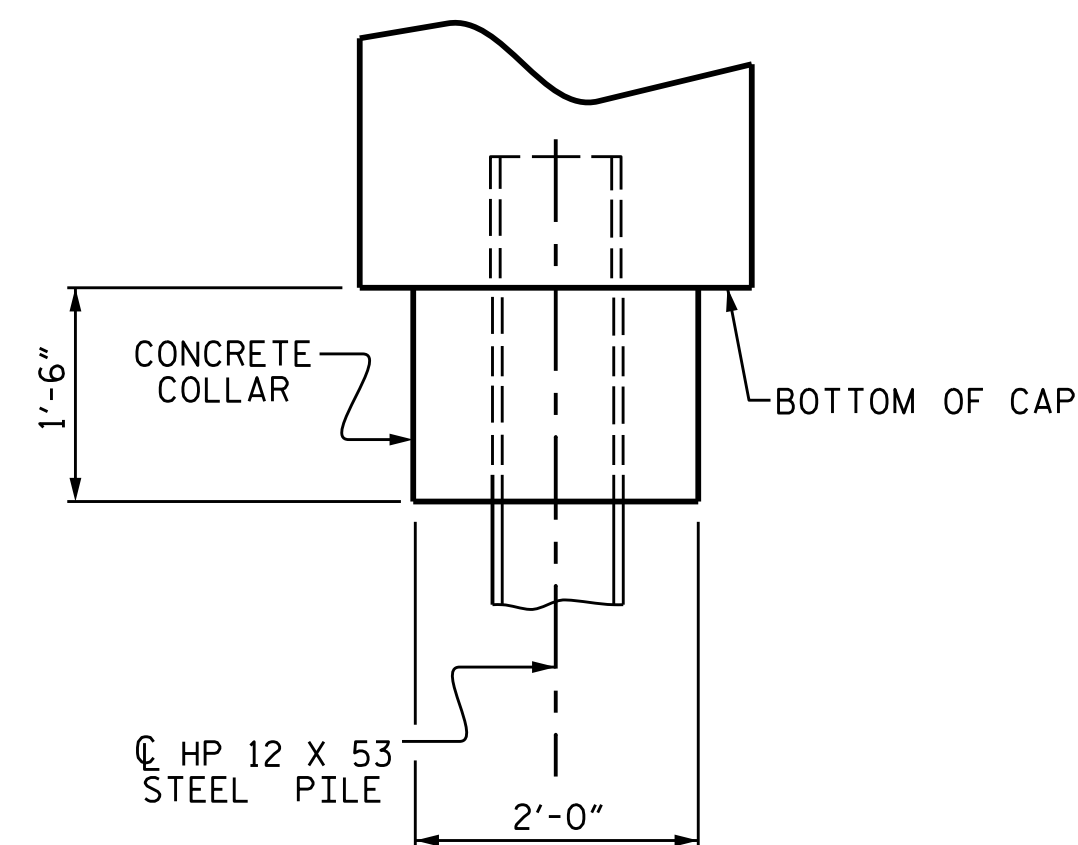
(END BENT 1 SHOWN, END BENT 2 SIMILAR BY ROTATION)



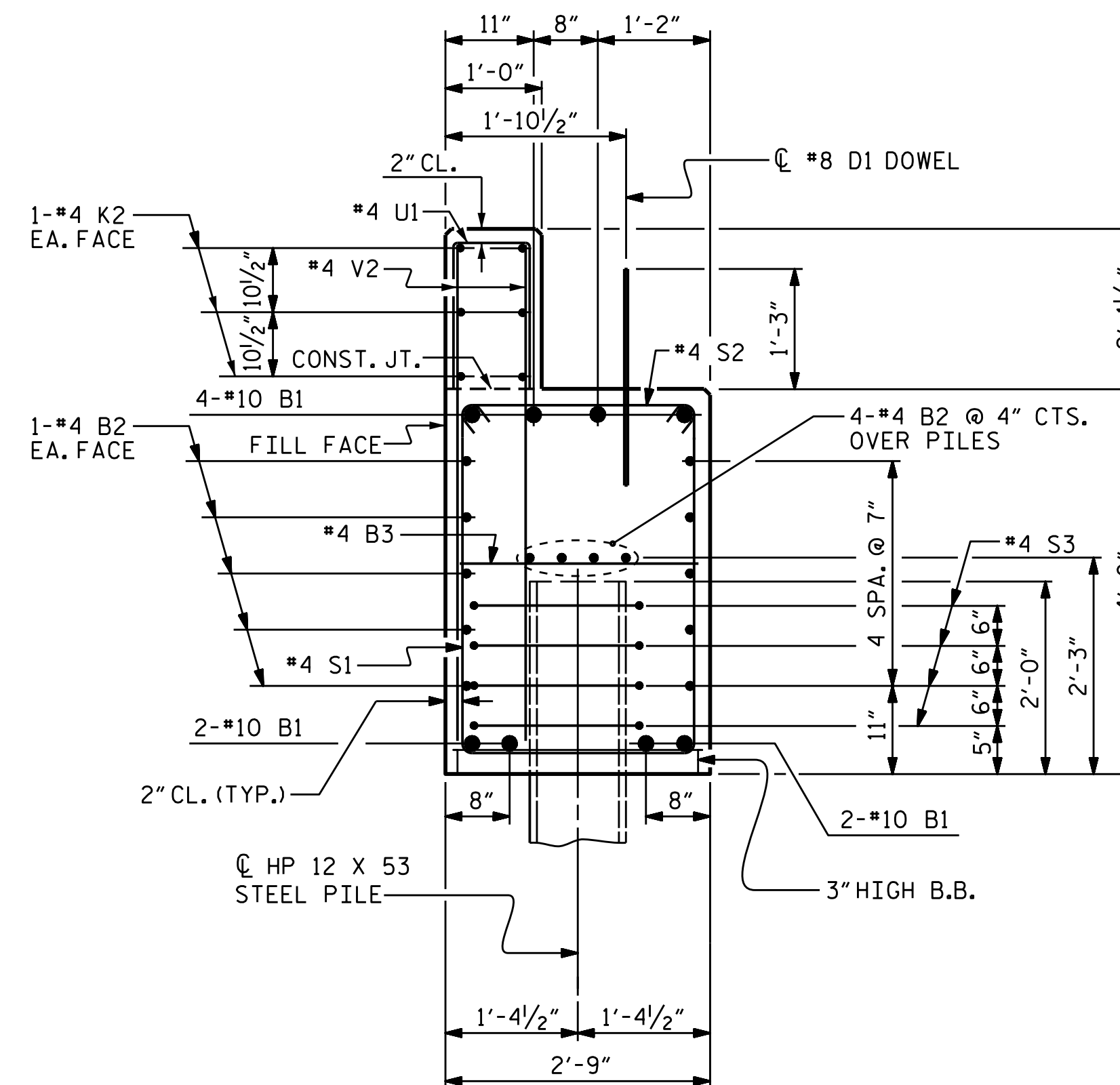
PLAN

CORROSION PROTECTION FOR STEEL PILES DETAIL

(END BENT 1 SHOWN, END BENT 2 SIMILAR BY ROTATION)



ELEVATION



SECTION A-A

(CONCRETE COLLAR NOT SHOWN FOR CLARITY. SEE "CORROSION PROTECTION FOR STEEL PILES DETAIL.")

PROJECT NO. B-4830

WAKE COUNTY

STATION: 15+32.50 -L-

SHEET 4 OF 4

STATE OF NORTH CAROLINA
DEPARTMENT OF TRANSPORTATION
RALEIGH

SUBSTRUCTURE

END BENT 1 & 2
DETAILS



DocuSigned by:
393872617

DRAWN BY : R. P. PATEL
CHECKED BY : H. P. KIM
DATE : 10/29/15
DATE : 01/05/16
DESIGN ENGINEER OF RECORD:
R. P. PATEL
DATE : 5/2/16

DOCUMENT NOT CONSIDERED
FINAL UNLESS ALL
SIGNATURES COMPLETED

REVISIONS						SHEET NO.	
NO.	BY:	DATE:	NO.	BY:	DATE:	S-14	
1			3			TOTAL SHEETS	
2			4			16	