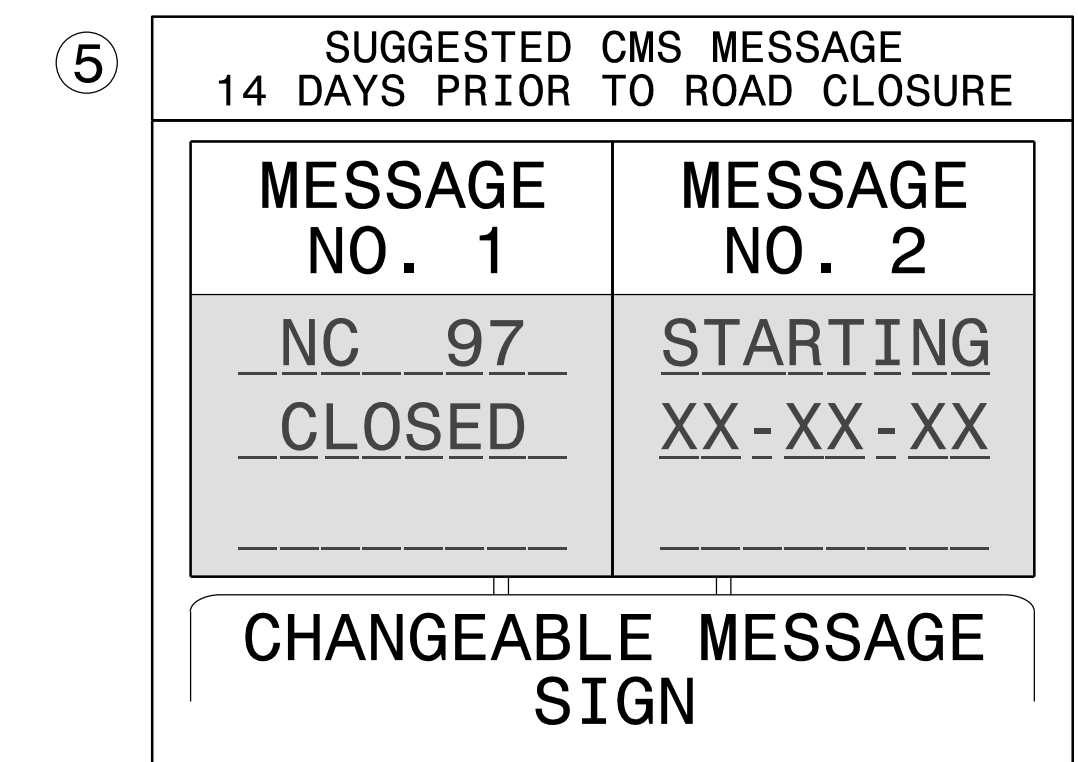
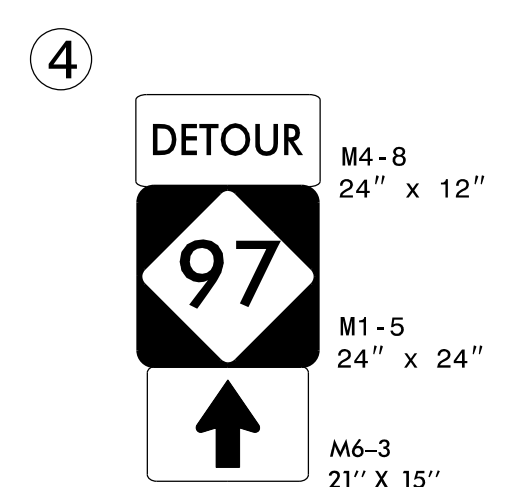
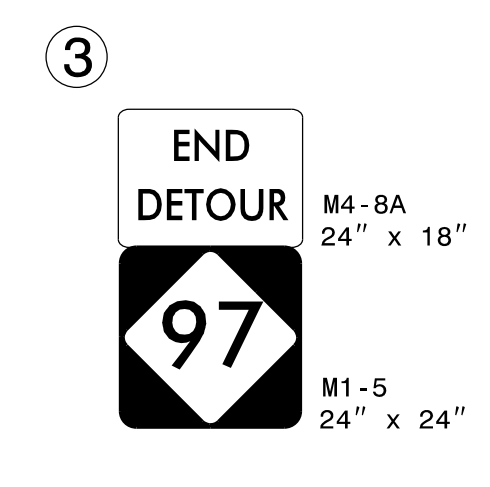
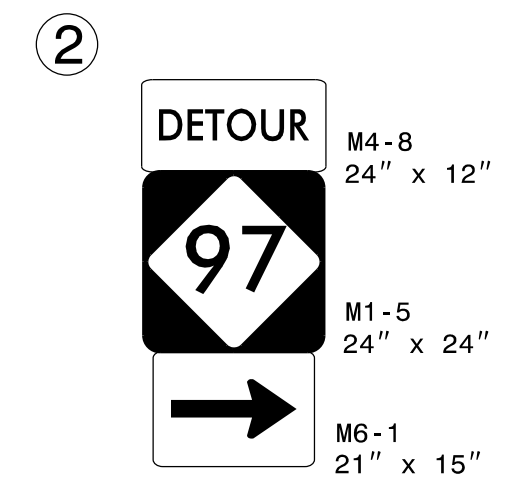
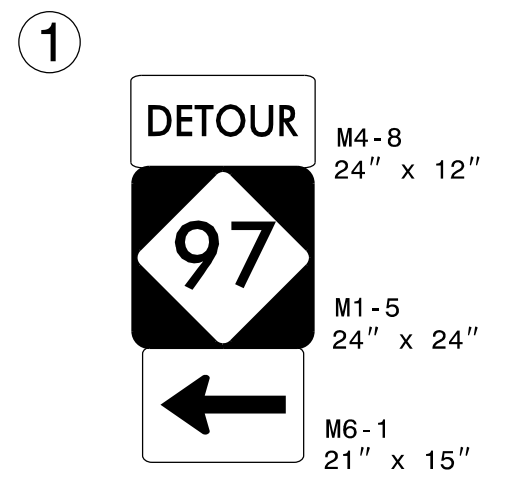
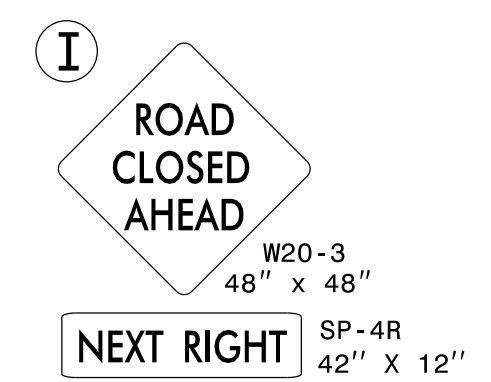
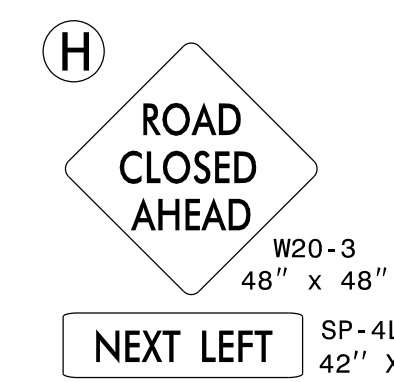
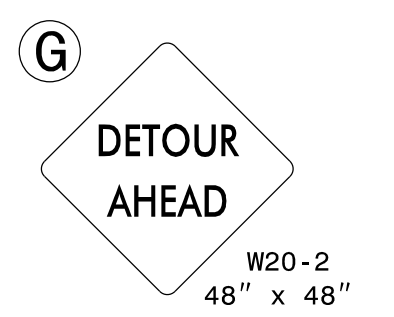
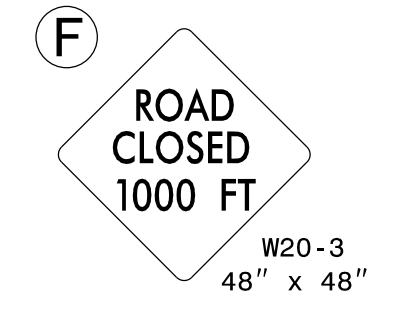
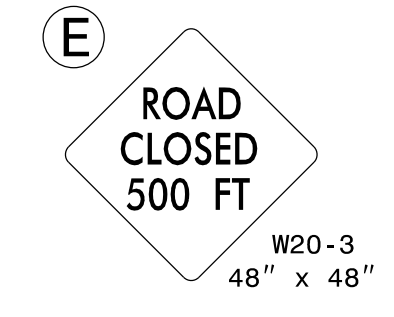
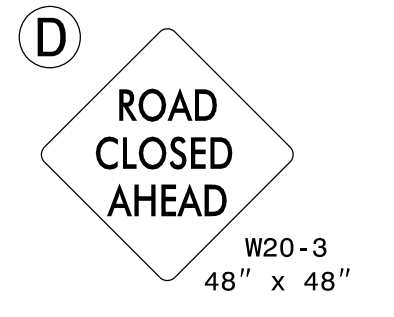
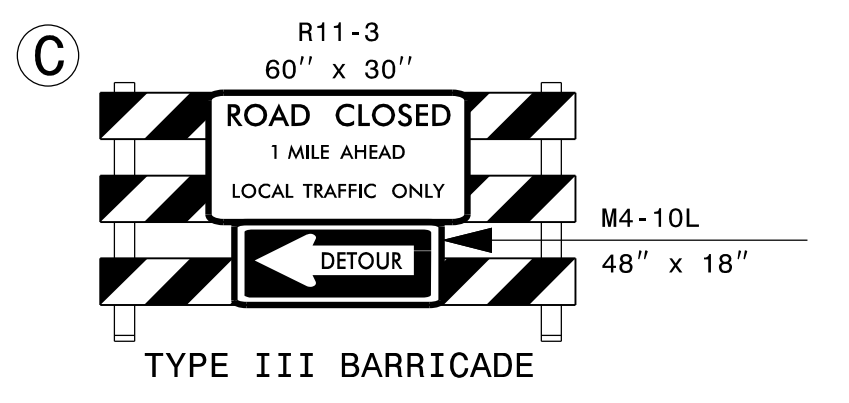
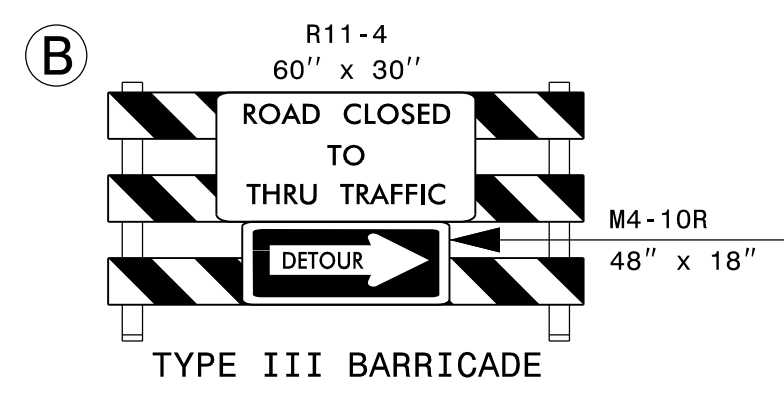
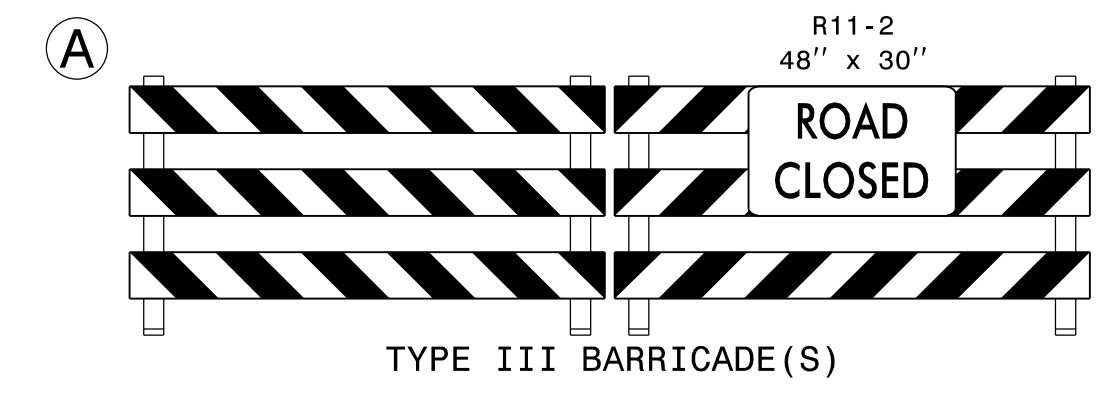


INSET "A" NOT TO SCALE

REFER TO ROADWAY STANDARD
DRAWING 1101.03, SHEET 1 OF 9
FOR APPLICABLE NOTES.



NOTE: DURING ROAD CLOSURE CMS'S ARE NOT REQUIRED.

7/5/2016 10:48:30 AM TC_TMP_2.dgn USER:keys

STEWART

Firm License No. C-1051
421 Fayetteville St., Suite 400
Raleigh, NC 27601
T 919.380.8750
www.stewartinc.com

APPROVED: *Andrew P. Young*
DATE: 7/5/2016

SEAL

DOCUMENT NOT CONSIDERED FINAL
UNLESS ALL SIGNATURES COMPLETED

DIVISION OF HIGHWAYS
STATE OF NORTH CAROLINA
DEPARTMENT OF TRANSPORTATION
WORK ZONE TRAFFIC CONTROL

**OFF-SITE
DETOUR ROUTE &
ROAD CLOSURE**