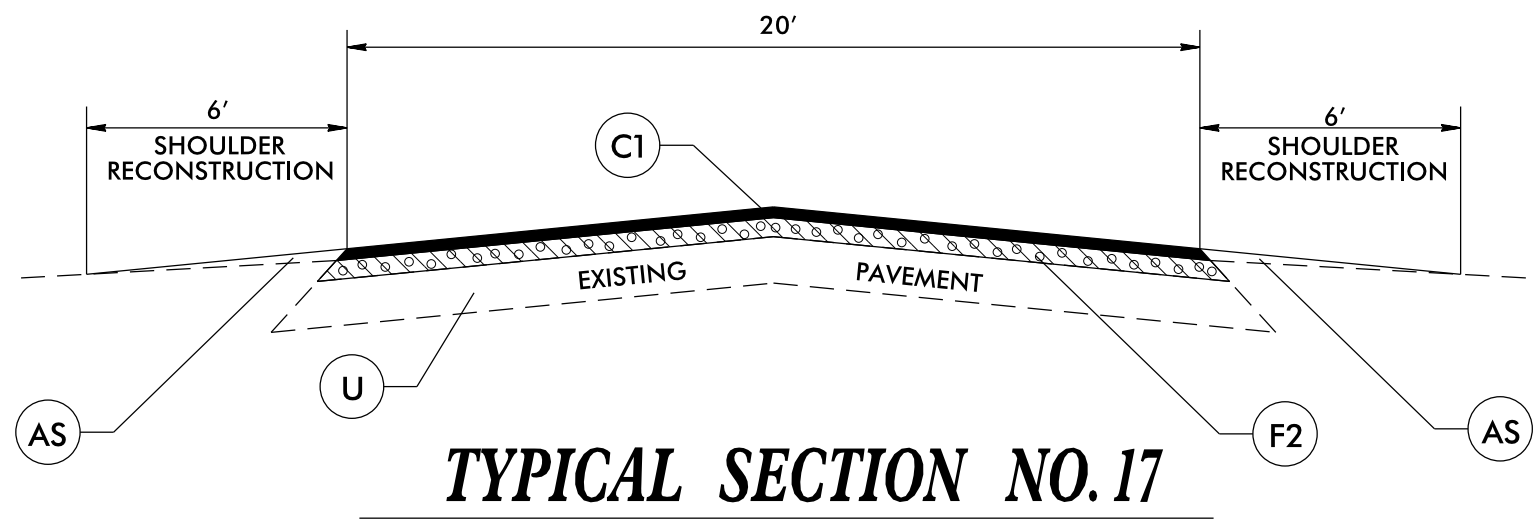
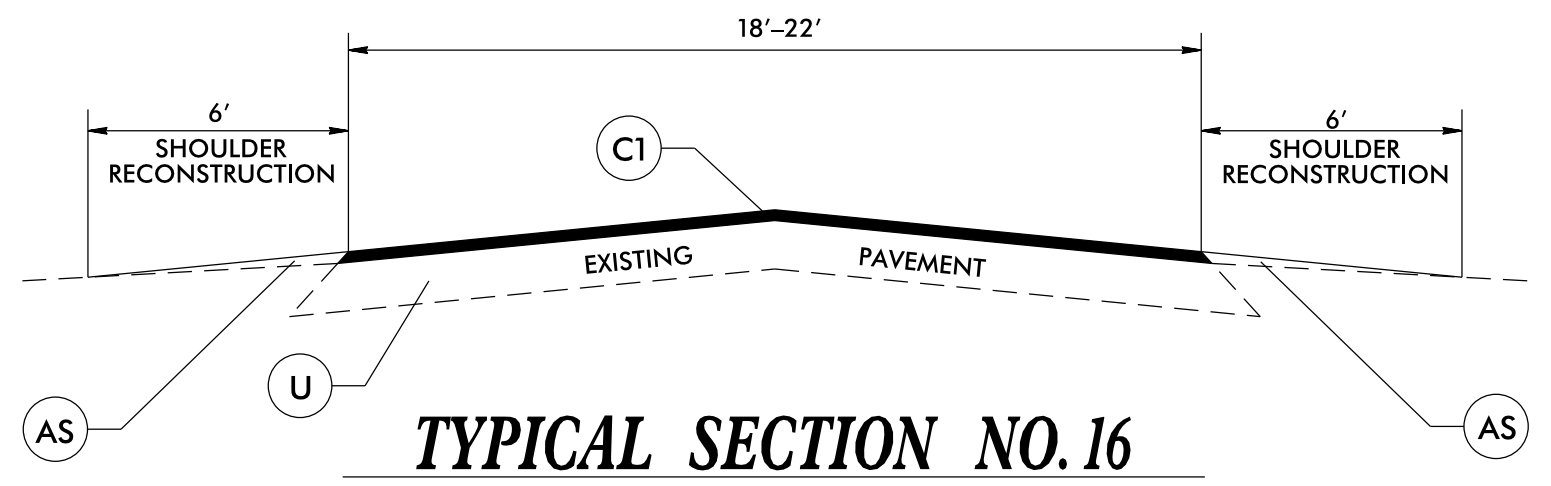
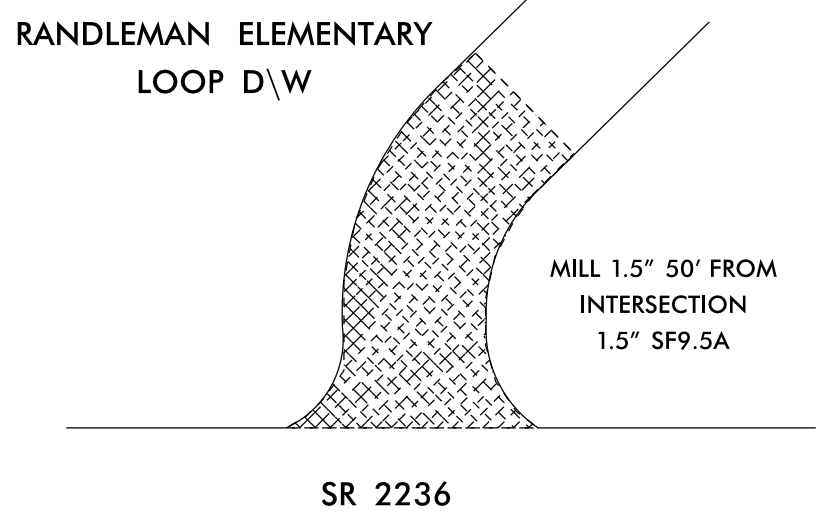
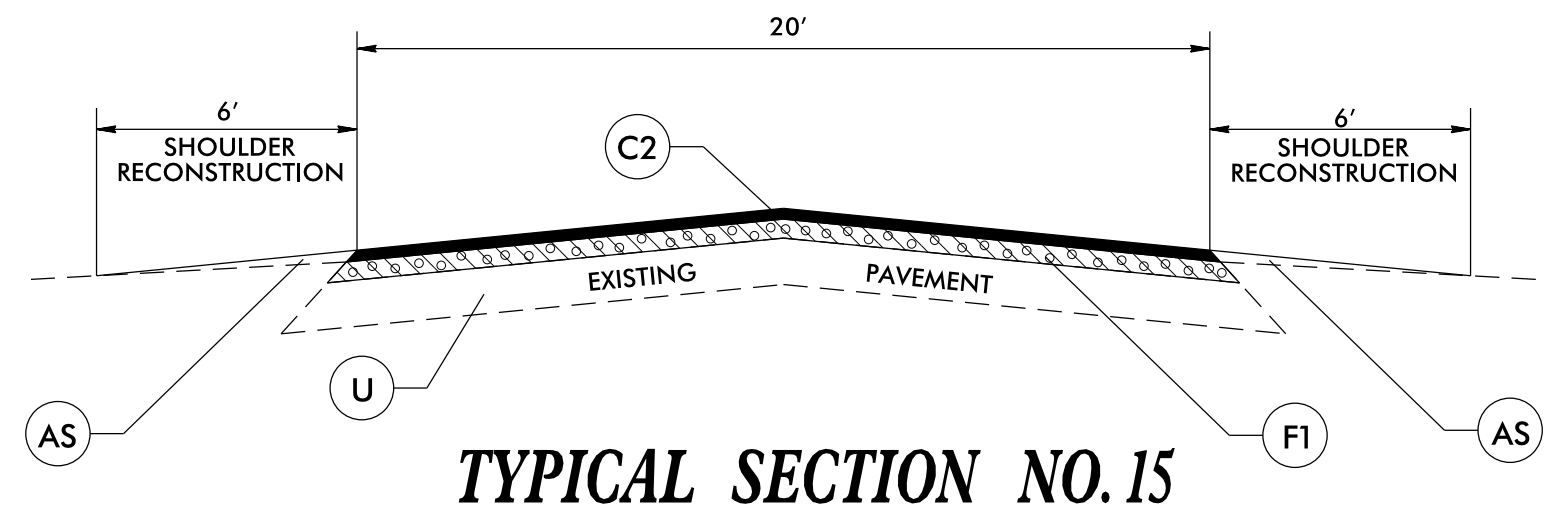
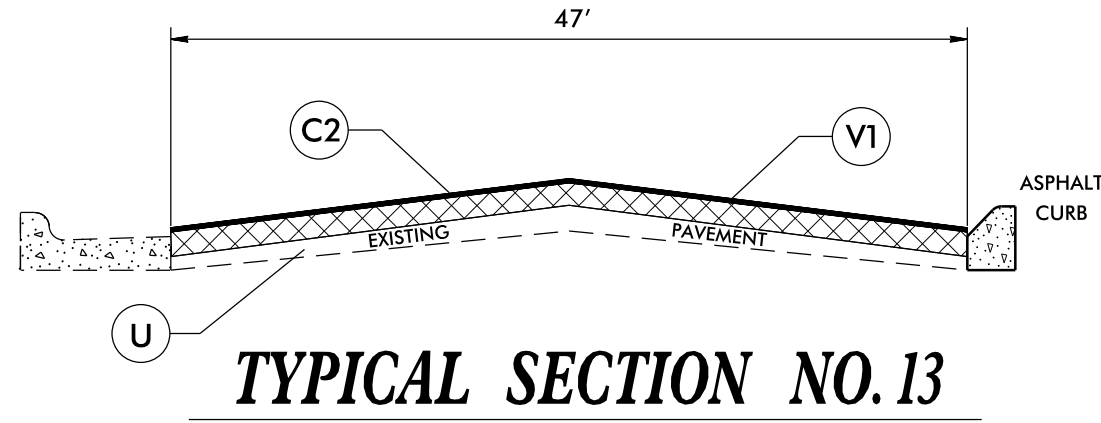


040397

WBS ELEMENT	SHEET NO.
2017CPT.08.26.10761 2017CPT.08.26.20761	9



PAVEMENT SCHEDULE	
C1	PROP. APPROX. 1.25" ASPHALT CONCRETE SURFACE COURSE, TYPE SF9.5A, AT AN AVERAGE RATE OF 137.5 LBS. PER SQ. YD.
C2	PROP. APPROX. 1.5" ASPHALT CONCRETE SURFACE COURSE, TYPE SF9.5A, AT AN AVERAGE RATE OF 165 LBS. PER SQ. YD.
C3	PROP. APPROX. 1.5" ASPHALT CONCRETE SURFACE COURSE, TYPE S9.5B, AT AN AVERAGE RATE OF 168 LBS. PER SQ. YD.
C4	PROP. APPROX. 2.0" ASPHALT CONCRETE SURFACE COURSE, TYPE S9.5B, AT AN AVERAGE RATE OF 224 LBS. PER SQ. YD.
D1	PROP. APPROX. 2.5" ASPHALT CONCRETE INTERMEDIATE COURSE, TYPE I19.0B, AT AN AVERAGE RATE OF 285LBS. PER SQ. YD.
E1	PROP. APPROX. 5" ASPHALT CONCRETE BASE COURSE, TYPE B25.0B, AT AN AVERAGE RATE OF 570 LBS. PER SQ. YD.
F1	PROPOSED ASPHALT SURFACE TREATMENT, MAT COAT WITH #67 STONE
F2	PROPOSED ASPHALT SURFACE TREATMENT, MAT COAT WITH #78 STONE
AS	AGGREGATE SHOULDER BORROW
U	EXISTING PAVEMENT.
V1	MILLING 1.5" IN DEPTH