

**This electronic collection of documents is provided  
for the convenience of the user  
and is Not a Certified Document –**

**The documents contained herein were originally issued  
and sealed by the individuals whose names and license  
numbers appear on each page, on the dates appearing  
with their signature on that page.**

**This file or an individual page  
shall not be considered a certified document.**

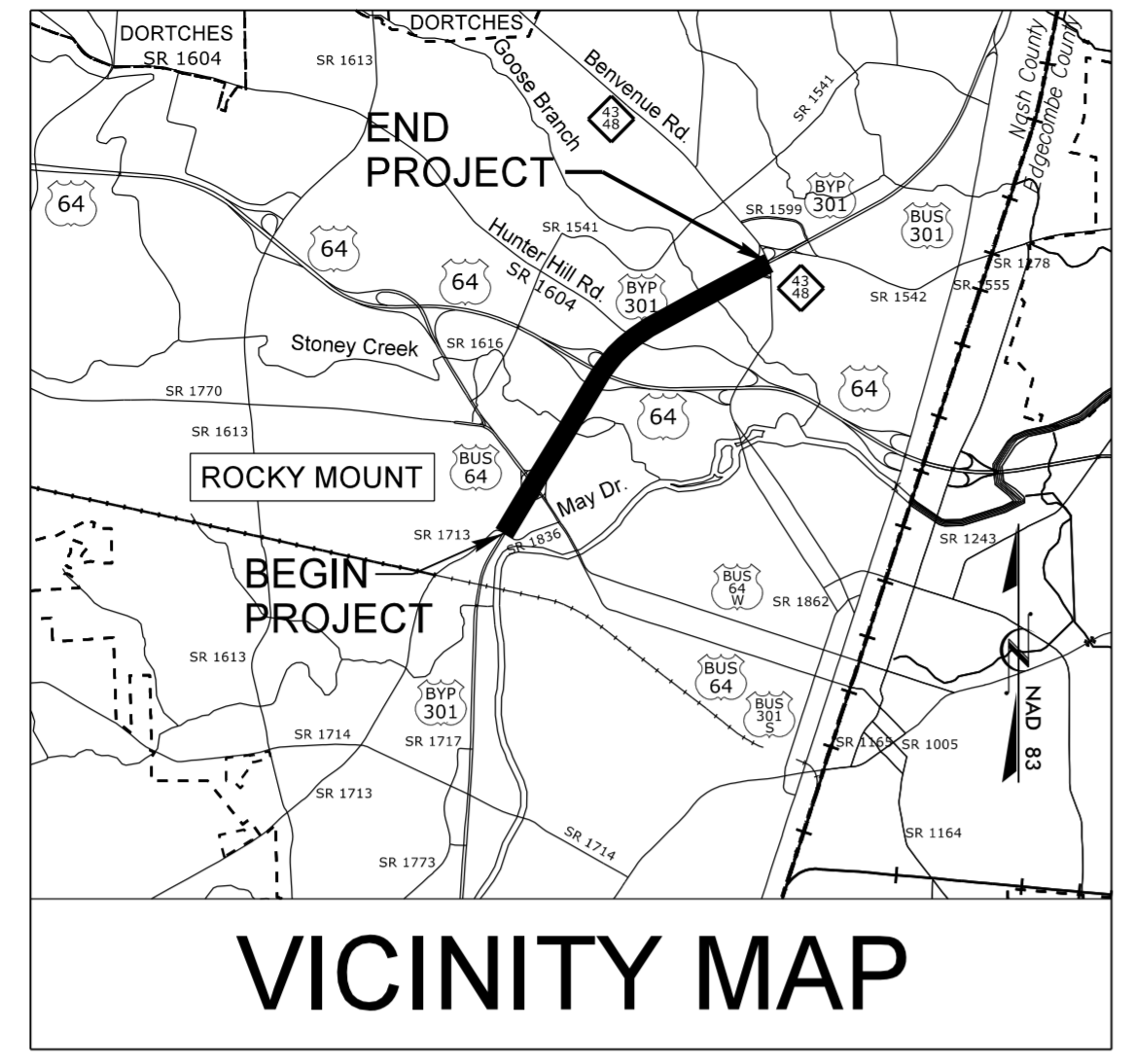
09/08/99

TIP PROJECT: U-3330

# STATE OF NORTH CAROLINA DIVISION OF HIGHWAYS

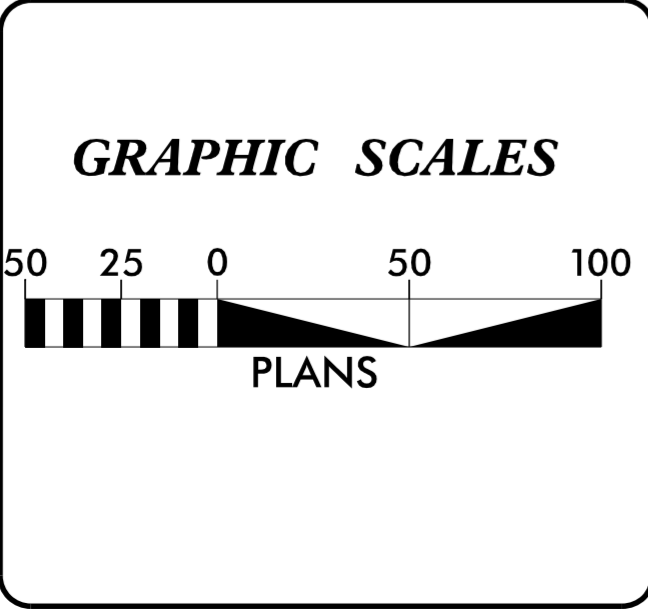
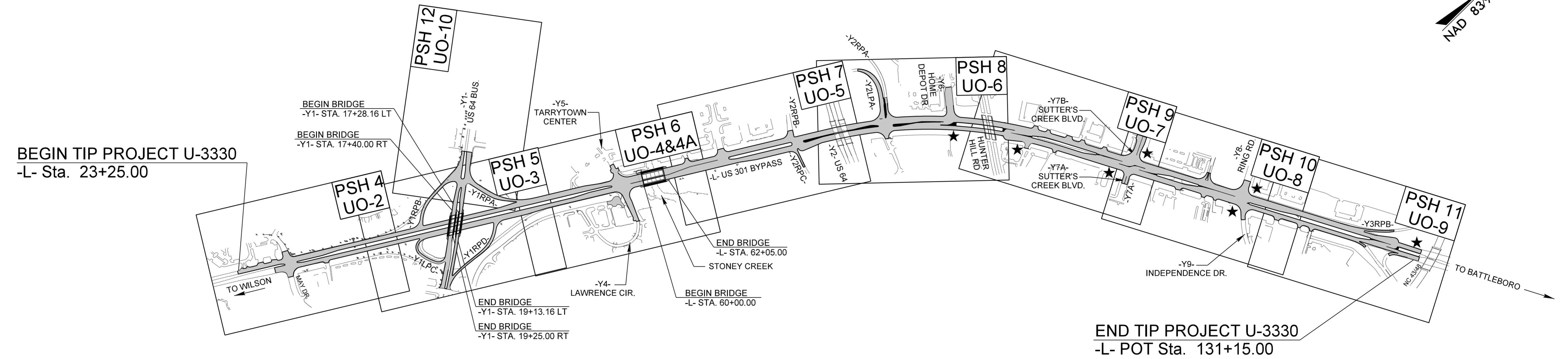
T.I.P. NO.	SHEET NO.
U-3330	UO-1

## UTILITIES BY OTHERS PLANS NASH COUNTY



**LOCATION: ROCKY MOUNT – US 301 BYPASS FROM SR 1836 (MAY DRIVE) TO NC 43-48 (BENVENUE ROAD) INTERCHANGE**

**TYPE OF WORK: POWER DISTRIBUTION, POWER TRANSMISSION, TELEPHONE, CATV, COMMUNICATIONS & GAS RELOCATION**



SHEET NO.	DESCRIPTION
UO-1	TITLE SHEET
UO-2 thru UO-10	UBO PLAN SHEETS

- UTILITY OWNERS ON PROJECT**
- (A) POWER – CITY OF ROCKY MOUNT ENERGY
  - RESOURCES DEPARTMENT ELECTRIC DIVISION (CORME)
  - (B) GAS – CITY OF ROCKY MOUNT ENERGY
  - RESOURCES DEPARTMENT NATURAL GAS DIVISION (CORMG)
  - (C) TELEPHONE – CENTURYLINK
  - (D) CATV FIBER OPTIC – SUDDENLINK
  - (E) TELEPHONE – AT&T TRANSMISSION
  - (F) COMMUNICATIONS – MCNC
  - (G) COMMUNICATIONS – LEVEL 3
  - (H) COMMUNICATIONS – LMK COMMUNICATIONS
  - (I) COMMUNICATIONS – CONTERRA ULTRA BROADBAND
  - (J) COMMUNICATIONS – INTELIPORT INC.

PLANS PREPARED BY:

3220 GLEN ROYAL RD. RALEIGH, NC 27617  
TELE 919.788.0224 FAX 919.788.0232  
NC LICENSE #P-0189

UTILITIES PROJECT ENGINEER  
Mary Jo Lee, P.E.

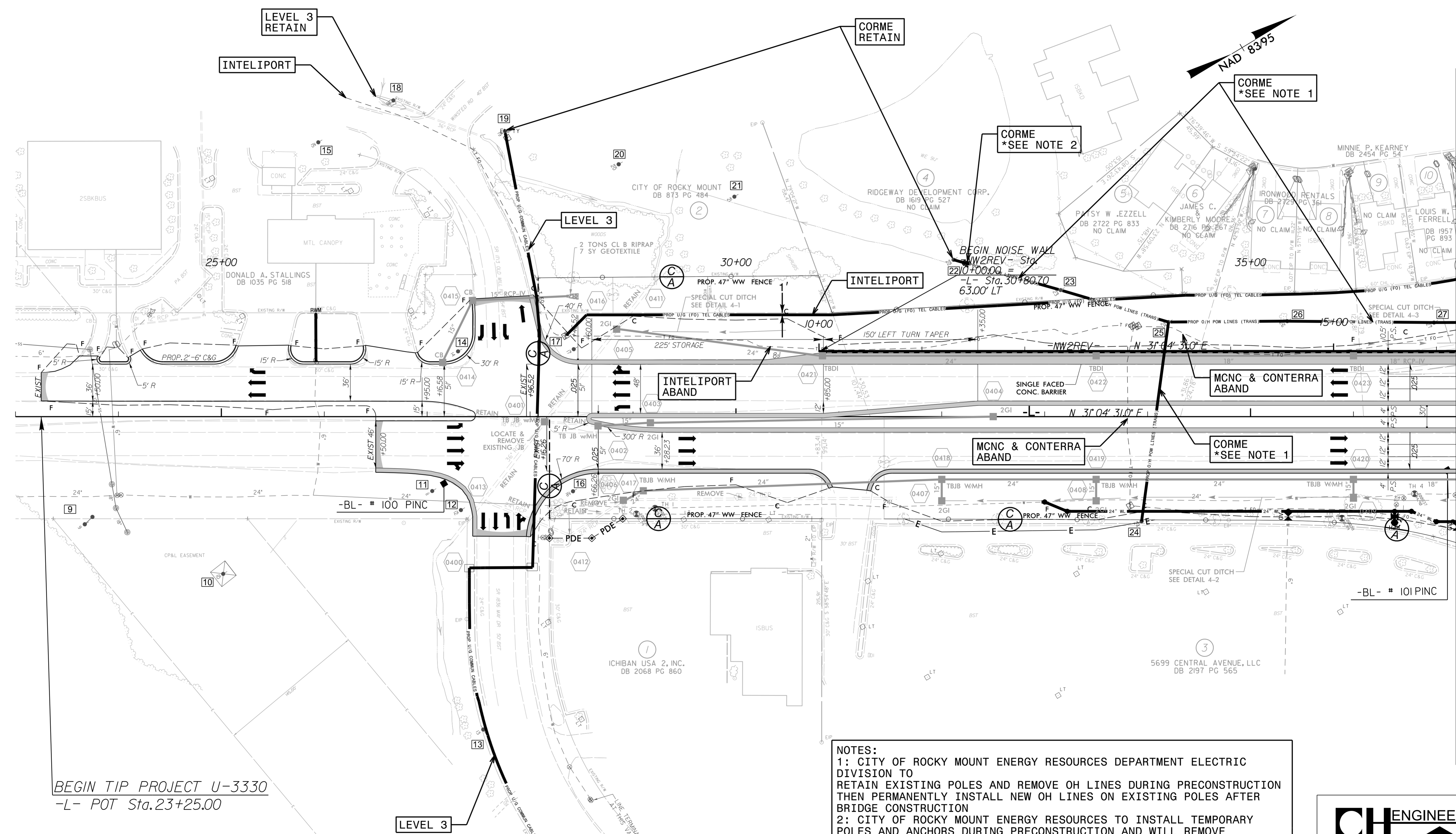
DIVISION OF HIGHWAYS  
UTILITIES UNIT  
1555 MAIL SERVICES CENTER  
RALEIGH NC 27699-1555  
PHONE (919) 707-6690  
FAX (919) 250-4151

BO HEMPHILL, PE UTILITIES REGIONAL ENGINEER  
KIFAH KAMIL UTILITIES ENGINEER  
KYLE PLEASANT UTILITIES AREA COORDINATOR  
LARRY JAMES UTILITIES COORDINATOR

3/14/2017  
P:\Utilities\Engineering\UBO\Proj\U3330\_ut\_tsh\_u001\_psh.dgn  
-USERNAME-

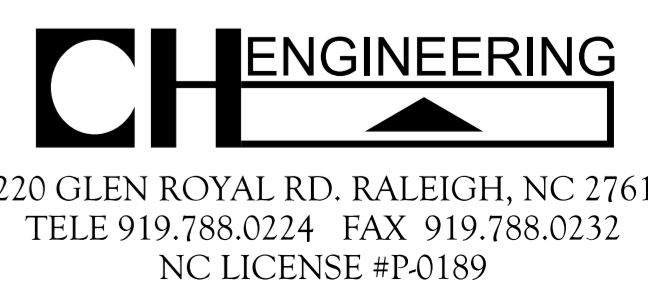
### UTILITIES BY OTHERS

NOTE:  
 ALL PROPOSED UTILITY WORK SHOWN ON THIS SHEET WILL BE DONE BY OTHERS. NO PAYMENT WILL BE MADE TO THE CONTRACTOR FOR PROPOSED UTILITY WORK SHOWN ON THIS SHEET.



BEGIN TIP PROJECT U-3330  
 -L- POT Sta. 23+25.00

NOTES:  
 1: CITY OF ROCKY MOUNT ENERGY RESOURCES DEPARTMENT ELECTRIC DIVISION TO RETAIN EXISTING POLES AND REMOVE OH LINES DURING PRECONSTRUCTION THEN PERMANENTLY INSTALL NEW OH LINES ON EXISTING POLES AFTER BRIDGE CONSTRUCTION  
 2: CITY OF ROCKY MOUNT ENERGY RESOURCES TO INSTALL TEMPORARY POLES AND ANCHORS DURING PRECONSTRUCTION AND WILL REMOVE AFTER BRIDGE CONSTRUCTION



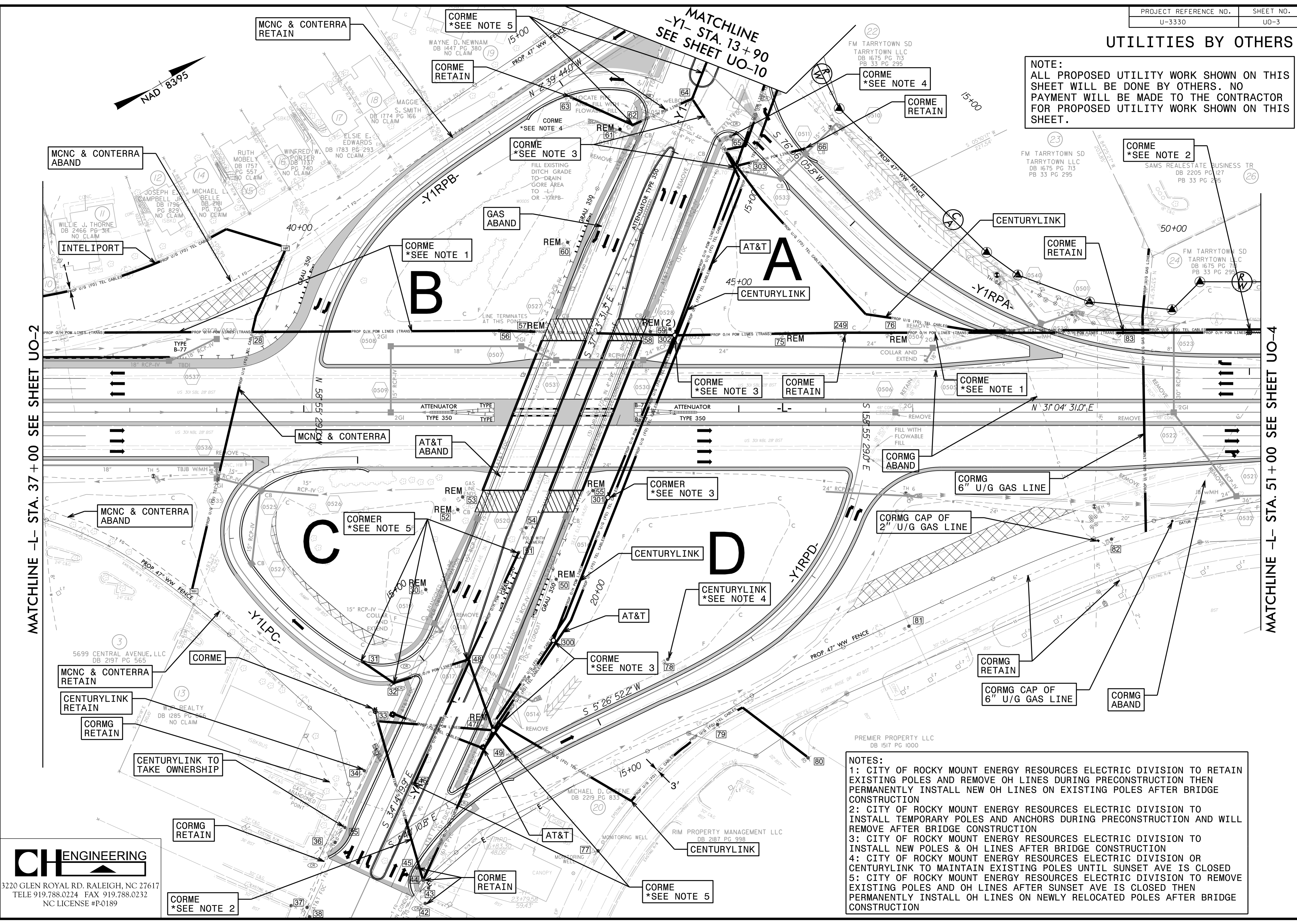
MATCHLINE -L- STA. 37+00 SEE SHEET UO-3

5/14/19 3/13/2017 P:\Projects\Engineering\UBD\Proj\U3330\ut\_l\_rdy\04\_U002\_psh.dgn

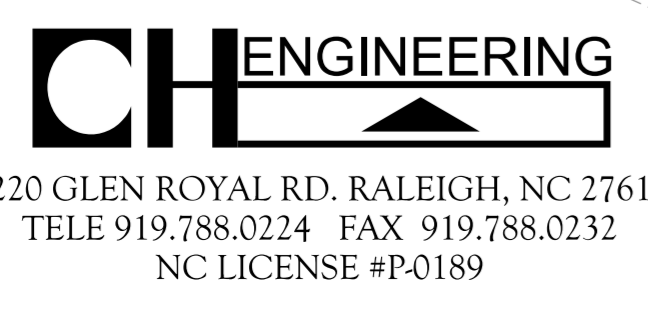


### UTILITIES BY OTHERS

NOTE:  
ALL PROPOSED UTILITY WORK SHOWN ON THIS SHEET WILL BE DONE BY OTHERS. NO PAYMENT WILL BE MADE TO THE CONTRACTOR FOR PROPOSED UTILITY WORK SHOWN ON THIS SHEET.



NOTES:  
 1: CITY OF ROCKY MOUNT ENERGY RESOURCES ELECTRIC DIVISION TO RETAIN EXISTING POLES AND REMOVE OH LINES DURING PRECONSTRUCTION THEN PERMANENTLY INSTALL NEW OH LINES ON EXISTING POLES AFTER BRIDGE CONSTRUCTION  
 2: CITY OF ROCKY MOUNT ENERGY RESOURCES ELECTRIC DIVISION TO INSTALL TEMPORARY POLES AND ANCHORS DURING PRECONSTRUCTION AND WILL REMOVE AFTER BRIDGE CONSTRUCTION  
 3: CITY OF ROCKY MOUNT ENERGY RESOURCES ELECTRIC DIVISION TO INSTALL NEW POLES & OH LINES AFTER BRIDGE CONSTRUCTION  
 4: CITY OF ROCKY MOUNT ENERGY RESOURCES ELECTRIC DIVISION OR CENTURYLINK TO MAINTAIN EXISTING POLES UNTIL SUNSET AVE IS CLOSED  
 5: CITY OF ROCKY MOUNT ENERGY RESOURCES ELECTRIC DIVISION TO REMOVE EXISTING POLES AND OH LINES AFTER SUNSET AVE IS CLOSED THEN PERMANENTLY INSTALL OH LINES ON NEWLY RELOCATED POLES AFTER BRIDGE CONSTRUCTION



5/14/09  
 3/13/2017  
 Engineering\UBO\Projects\U3330\ut.r.d\05\_UO03\_psh.dgn

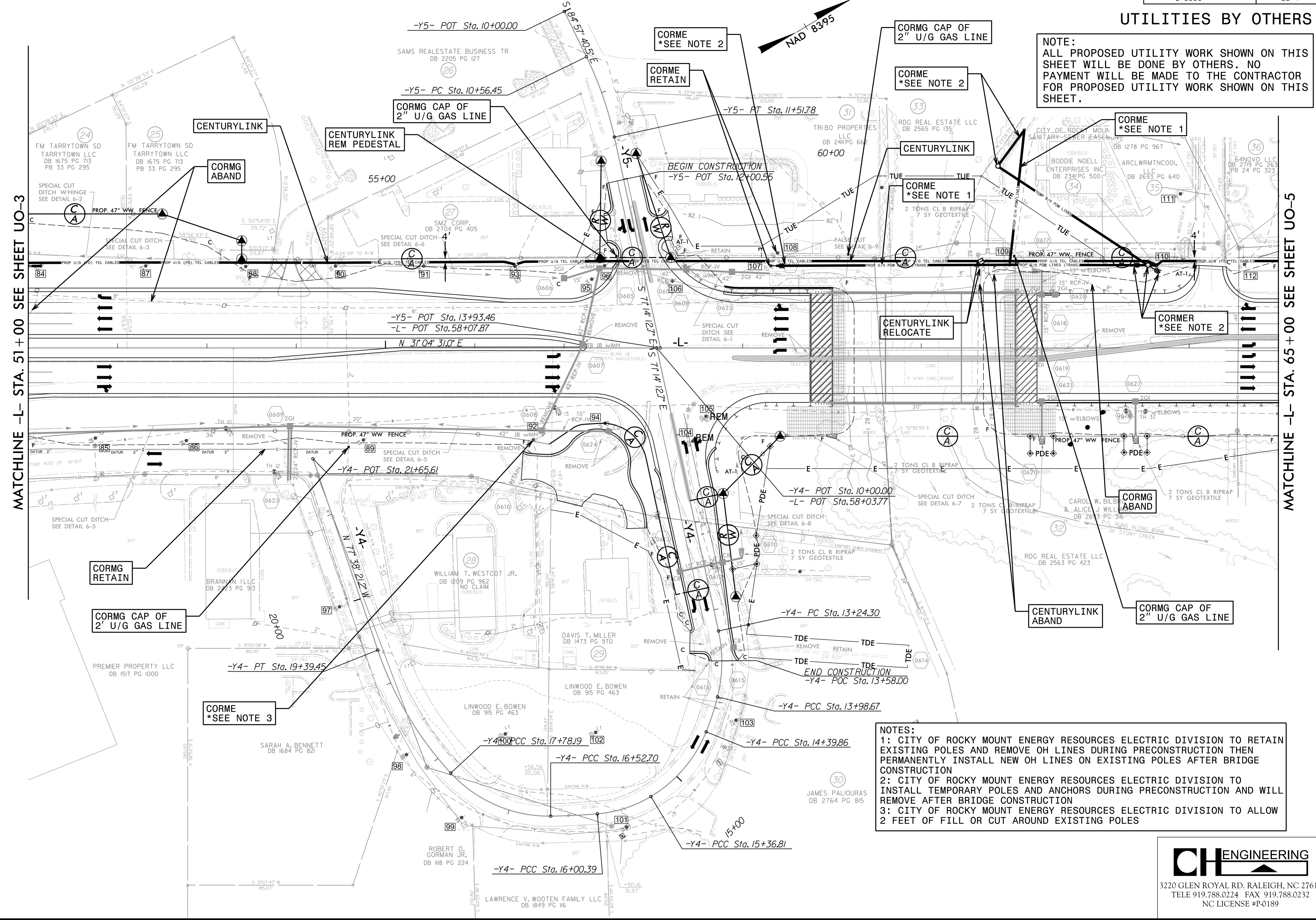


**UTILITIES BY OTHERS**

**NOTE:**  
 ALL PROPOSED UTILITY WORK SHOWN ON THIS SHEET WILL BE DONE BY OTHERS. NO PAYMENT WILL BE MADE TO THE CONTRACTOR FOR PROPOSED UTILITY WORK SHOWN ON THIS SHEET.

MATCHLINE -L- STA. 51+00 SEE SHEET UO-3

MATCHLINE -L- STA. 65+00 SEE SHEET UO-5



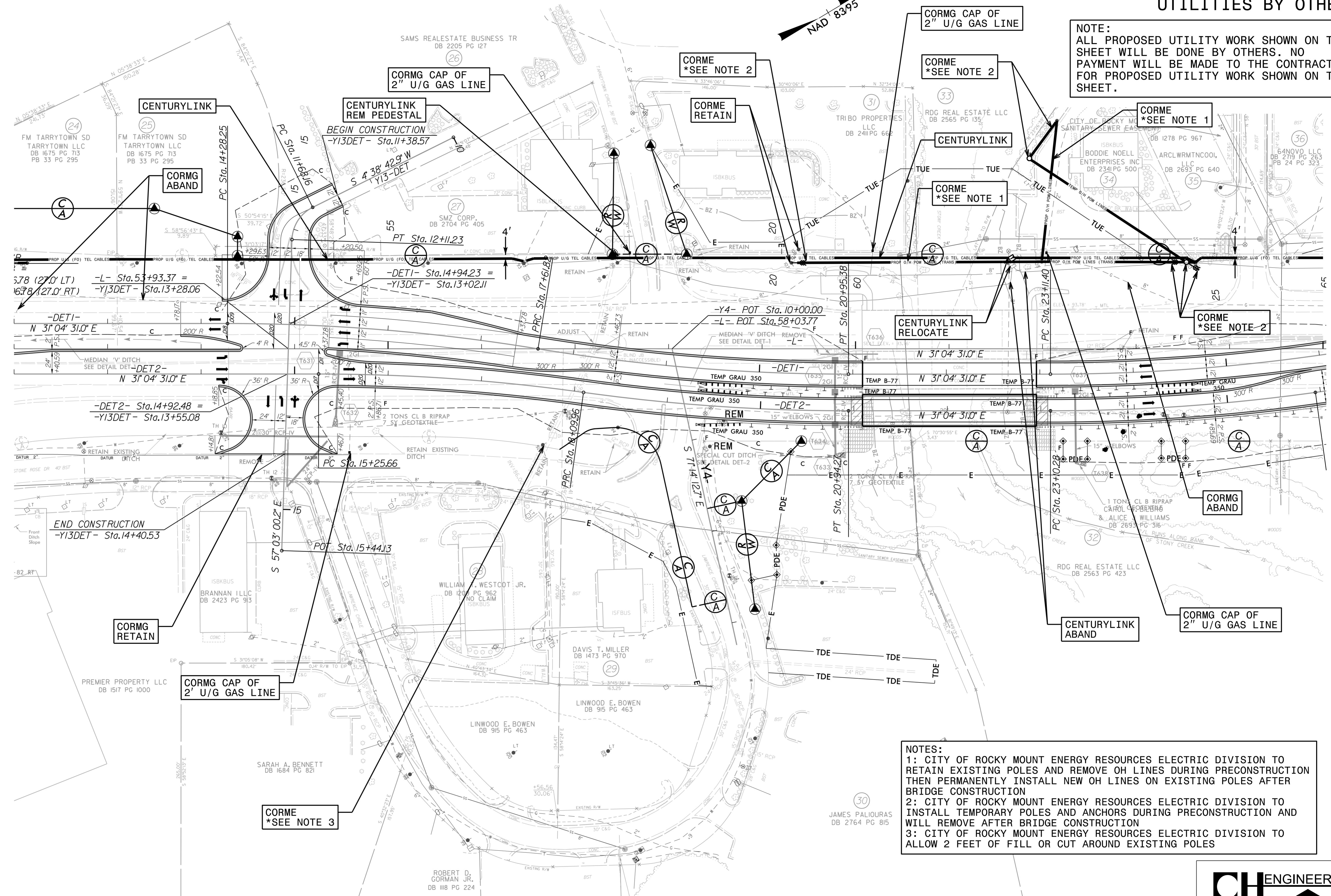
**NOTES:**  
 1: CITY OF ROCKY MOUNT ENERGY RESOURCES ELECTRIC DIVISION TO RETAIN EXISTING POLES AND REMOVE OH LINES DURING PRECONSTRUCTION THEN PERMANENTLY INSTALL NEW OH LINES ON EXISTING POLES AFTER BRIDGE CONSTRUCTION  
 2: CITY OF ROCKY MOUNT ENERGY RESOURCES ELECTRIC DIVISION TO INSTALL TEMPORARY POLES AND ANCHORS DURING PRECONSTRUCTION AND WILL REMOVE AFTER BRIDGE CONSTRUCTION  
 3: CITY OF ROCKY MOUNT ENERGY RESOURCES ELECTRIC DIVISION TO ALLOW 2 FEET OF FILL OR CUT AROUND EXISTING POLES

3/13/2017 10:58:11 AM C:\Users\psh.dgn\Projects\U3330\U3330\_UO-4.dgn



### UTILITIES BY OTHERS

NOTE:  
ALL PROPOSED UTILITY WORK SHOWN ON THIS SHEET WILL BE DONE BY OTHERS. NO PAYMENT WILL BE MADE TO THE CONTRACTOR FOR PROPOSED UTILITY WORK SHOWN ON THIS SHEET.

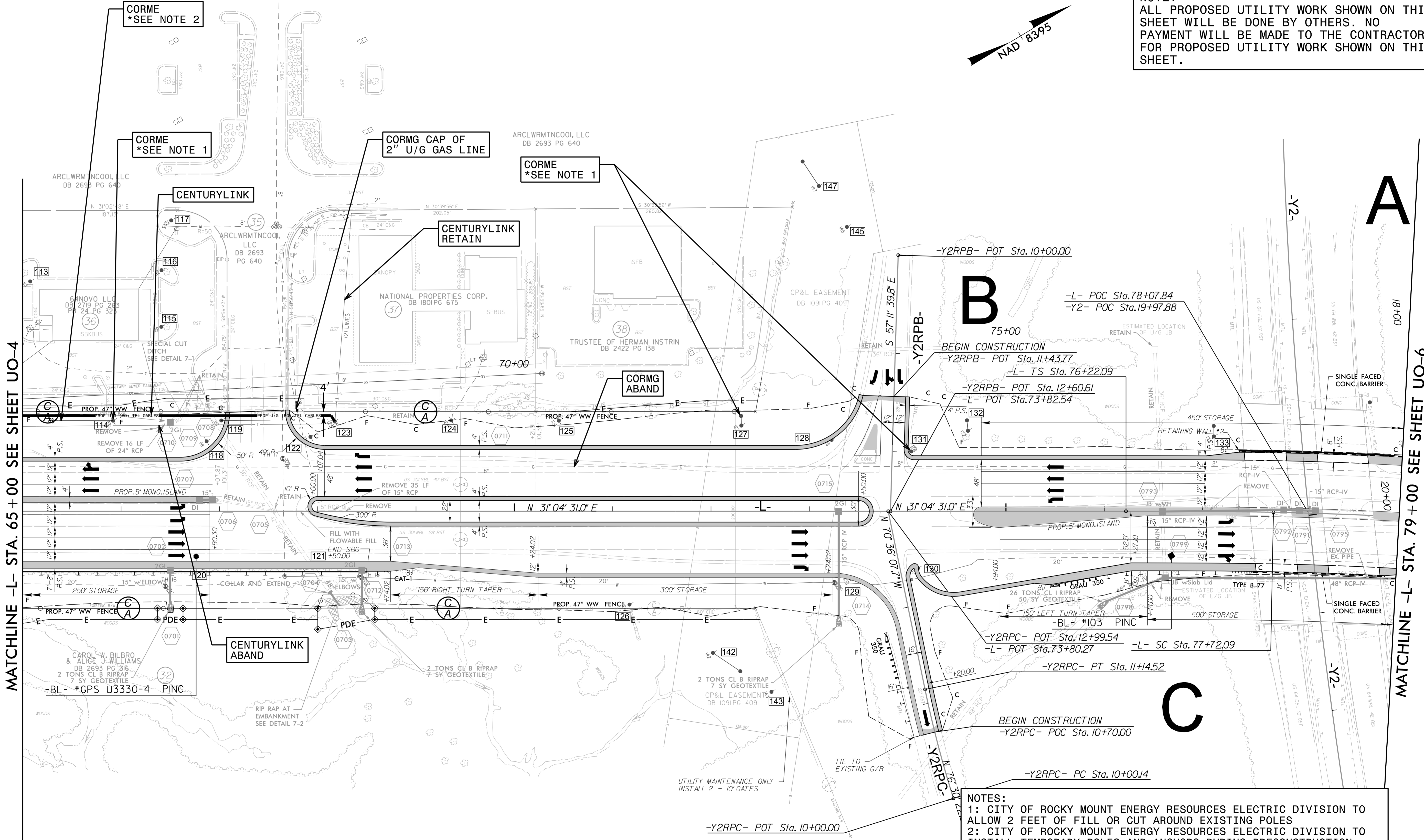
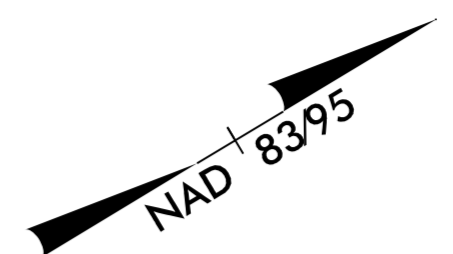


NOTES:  
 1: CITY OF ROCKY MOUNT ENERGY RESOURCES ELECTRIC DIVISION TO RETAIN EXISTING POLES AND REMOVE OH LINES DURING PRECONSTRUCTION THEN PERMANENTLY INSTALL NEW OH LINES ON EXISTING POLES AFTER BRIDGE CONSTRUCTION  
 2: CITY OF ROCKY MOUNT ENERGY RESOURCES ELECTRIC DIVISION TO INSTALL TEMPORARY POLES AND ANCHORS DURING PRECONSTRUCTION AND WILL REMOVE AFTER BRIDGE CONSTRUCTION  
 3: CITY OF ROCKY MOUNT ENERGY RESOURCES ELECTRIC DIVISION TO ALLOW 2 FEET OF FILL OR CUT AROUND EXISTING POLES

3/13/2017  
 C:\Users\jgorman\OneDrive\Engineering\UBD\Pro\U3330\U3330\_U0-4A\_psh.dgn  
 5/14/99

UTILITIES BY OTHERS

NOTE:  
ALL PROPOSED UTILITY WORK SHOWN ON THIS SHEET WILL BE DONE BY OTHERS. NO PAYMENT WILL BE MADE TO THE CONTRACTOR FOR PROPOSED UTILITY WORK SHOWN ON THIS SHEET.



MATCHLINE -L- STA. 65+00 SEE SHEET UO-4

MATCHLINE -L- STA. 79+00 SEE SHEET UO-6

NOTES:  
1: CITY OF ROCKY MOUNT ENERGY RESOURCES ELECTRIC DIVISION TO ALLOW 2 FEET OF FILL OR CUT AROUND EXISTING POLES  
2: CITY OF ROCKY MOUNT ENERGY RESOURCES ELECTRIC DIVISION TO INSTALL TEMPORARY POLES AND ANCHORS DURING PRECONSTRUCTION AND WILL REMOVE AFTER BRIDGE CONSTRUCTION

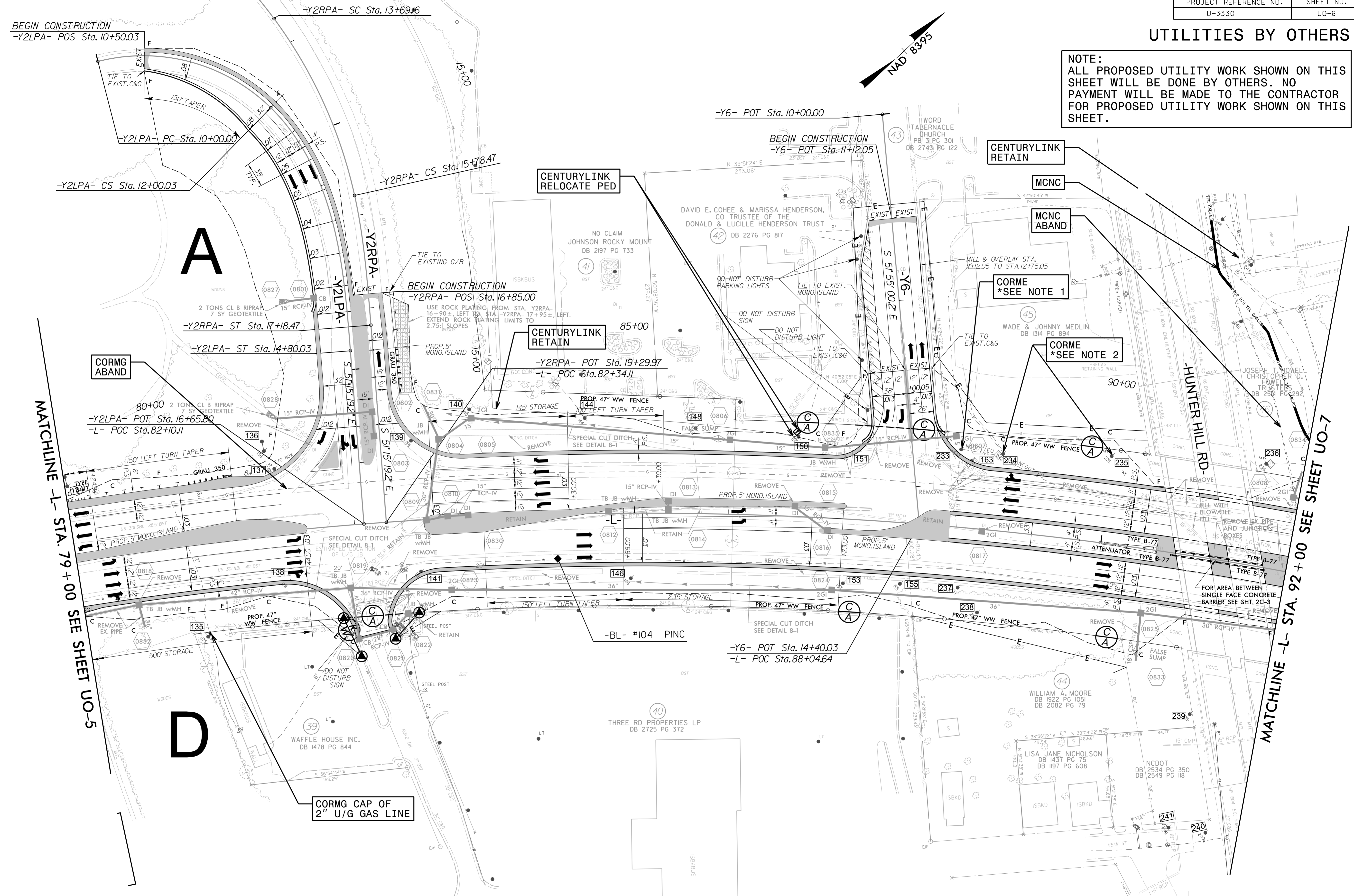
TRANSITION MEDIAN FROM 30' TO 33'  
-L- STA.73+90.00 TO STA.74+65.00

3/13/2017 10:58:11 AM \\P:\Projects\Engineering\UBO\Proj\U33330\ut\_r.dwg UO05\_psh.dgn



### UTILITIES BY OTHERS

**NOTE:**  
 ALL PROPOSED UTILITY WORK SHOWN ON THIS SHEET WILL BE DONE BY OTHERS. NO PAYMENT WILL BE MADE TO THE CONTRACTOR FOR PROPOSED UTILITY WORK SHOWN ON THIS SHEET.



BEGIN CONSTRUCTION  
 -Y2LPA- POS Sta. 10+50.03

-Y2RPA- SC Sta. 13+69.16

-Y6- POT Sta. 10+00.00

BEGIN CONSTRUCTION  
 -Y6- POT Sta. 11+12.05

BEGIN CONSTRUCTION  
 -Y2RPA- POS Sta. 16+85.00

**A**

-Y2LPA- ST Sta. 14+80.03

CORMG ABAND

MATCHLINE -L- STA. 79+00 SEE SHEET UO-5

CENTURYLINK RELOCATE PED

CENTURYLINK RETAIN

CENTURYLINK RETAIN

MCNC

MCNC ABAND

CORME \*SEE NOTE 1

CORME \*SEE NOTE 2

HUNTER HILL RD.

MATCHLINE -L- STA. 92+00 SEE SHEET UO-7

**D**

CORMG CAP OF 2" U/G GAS LINE

-Y6- POT Sta. 14+40.03  
 -L- POC Sta. 88+04.64

**NOTES:**  
 1: CITY OF ROCKY MOUNT ENERGY RESOURCES ELECTRIC DIVISION TO ALLOW JOINT USE OF THEIR POLE FOR NCDOT SIGNALS  
 2: CITY OF ROCKY MOUNT ENERGY RESOURCES ELECTRIC DIVISION TO ALLOW 2 FEET OF FILL OR CUT AROUND EXISTING POLES

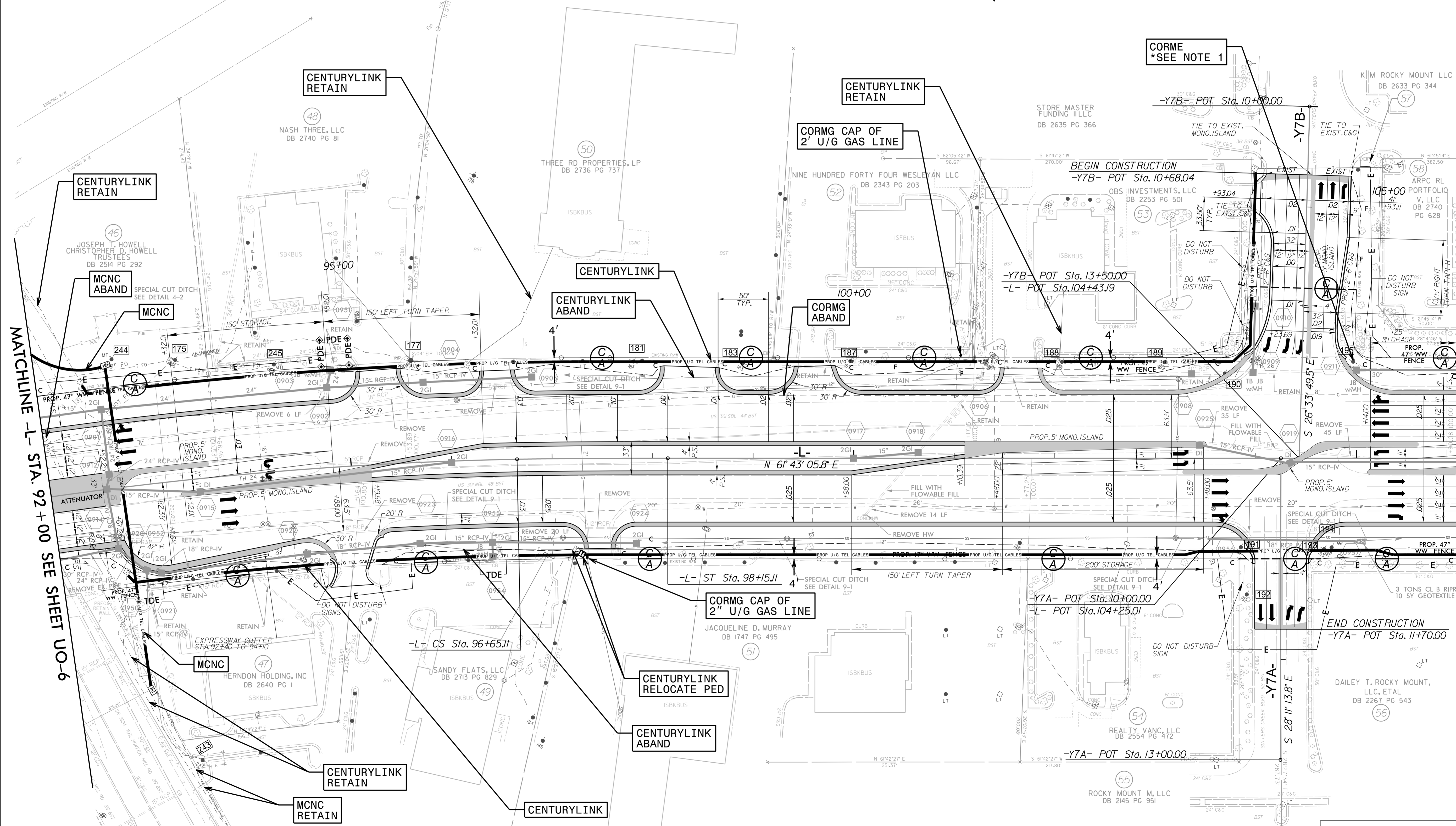
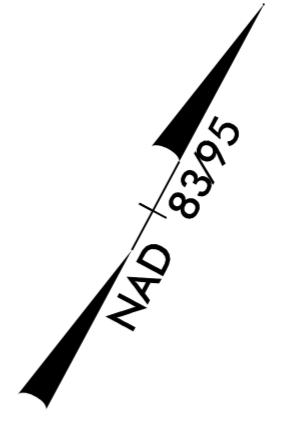
**CH ENGINEERING**  
 3220 GLEN ROYAL RD. RALEIGH, NC 27617  
 TELE 919.788.0224 FAX 919.788.0232  
 NC LICENSE #P-0189

3/13/2017 10:58:11 AM C:\Users\jg\Documents\Projects\U3330\U3330-UT-UD06-psb.dgn  
 5/14/99



### UTILITIES BY OTHERS

**NOTE:**  
 ALL PROPOSED UTILITY WORK SHOWN ON THIS SHEET WILL BE DONE BY OTHERS. NO PAYMENT WILL BE MADE TO THE CONTRACTOR FOR PROPOSED UTILITY WORK SHOWN ON THIS SHEET.



MATCHLINE -L- STA. 92+00 SEE SHEET UO-6

MATCHLINE -L- STA. 106+00 SEE SHEET UO-8

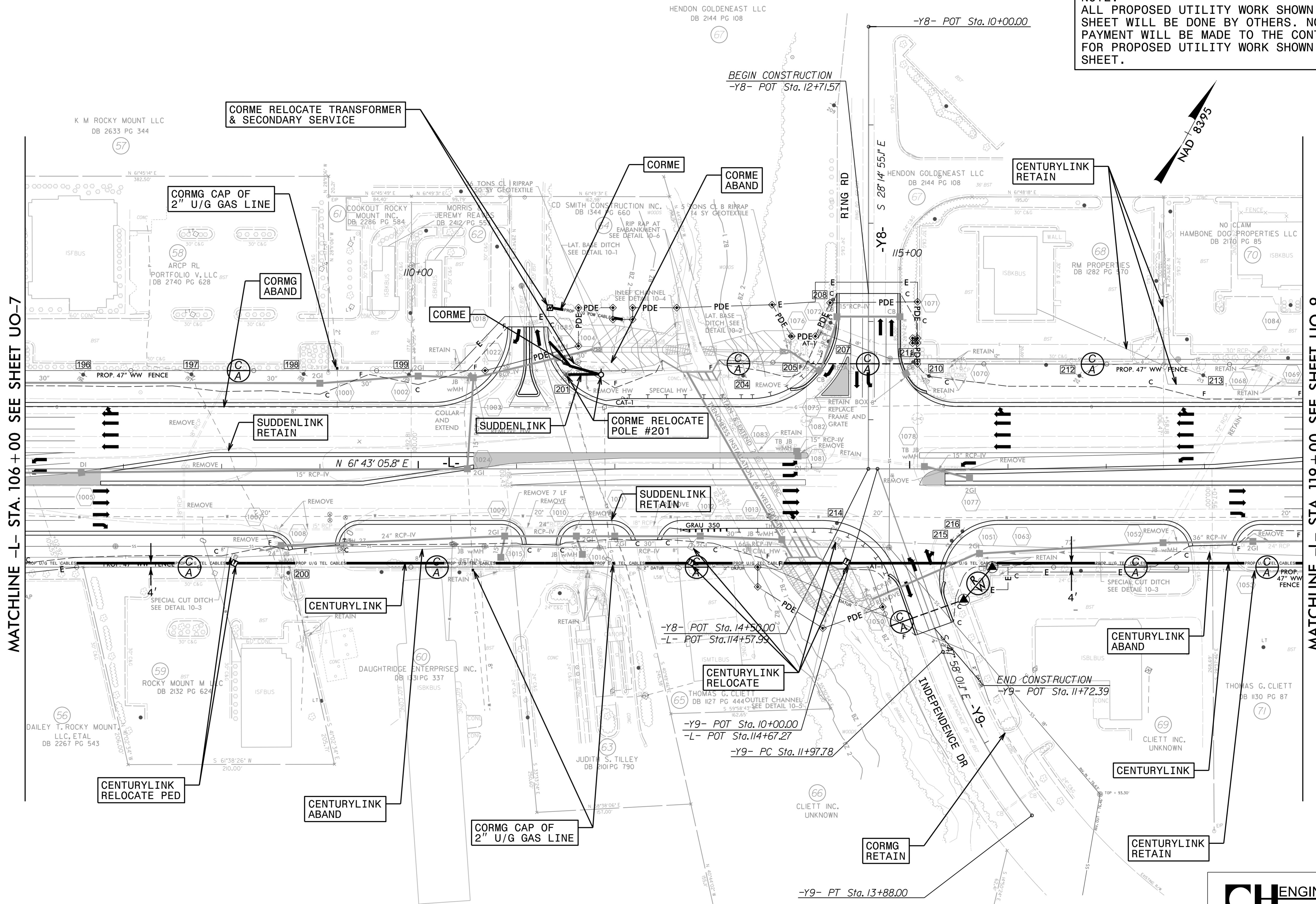
**NOTES:**  
 1: CITY OF ROCKY MOUNT ENERGY RESOURCES ELECTRIC DIVISION TO ALLOW JOINT USE OF THEIR POLE FOR NCDOT SIGNALS

**CH ENGINEERING**  
 3220 GLEN ROYAL RD. RALEIGH, NC 27617  
 TELE 919.788.0224 FAX 919.788.0232  
 NC LICENSE #P0189

3/13/2017 10:58:11 AM \\P:\Projects\Engineering\UBO\Proj\U3330\ut\_r.dwg\09\_UO07\_psh.dgn

### UTILITIES BY OTHERS

NOTE:  
ALL PROPOSED UTILITY WORK SHOWN ON THIS SHEET WILL BE DONE BY OTHERS. NO PAYMENT WILL BE MADE TO THE CONTRACTOR FOR PROPOSED UTILITY WORK SHOWN ON THIS SHEET.



MATCHLINE -L- STA. 106+00 SEE SHEET UO-7

MATCHLINE -L- STA. 119+00 SEE SHEET UO-9

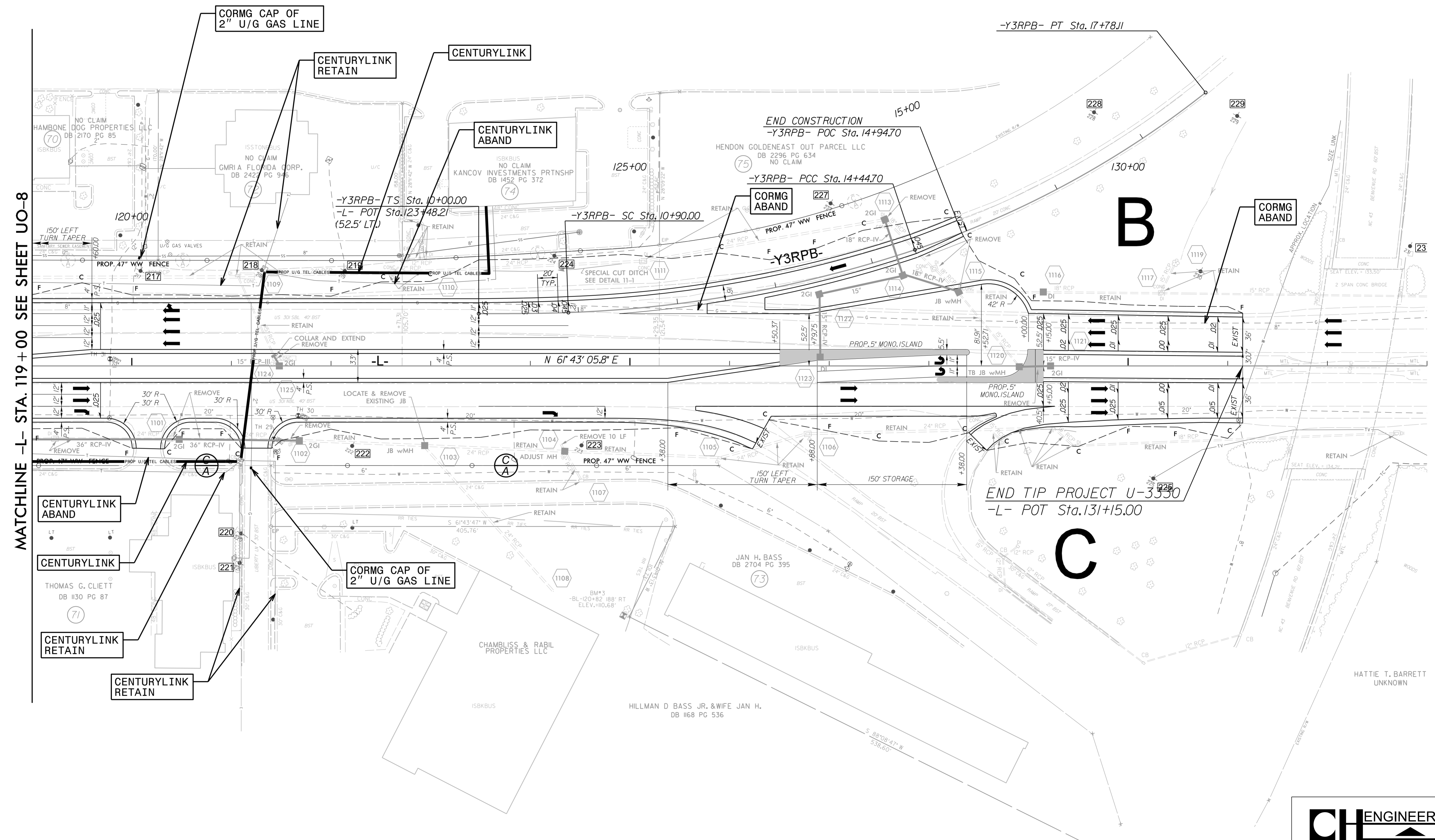
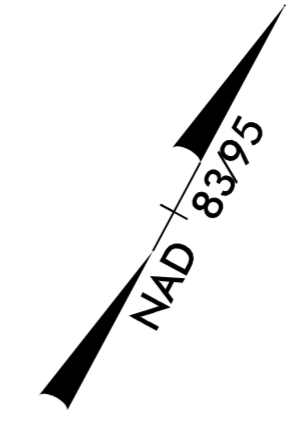


5/14/99  
3/13/2017  
C:\Users\psh\dgs\Engineering\UBO\Proj\U3330\ut\_l\_r.dwg\UO-8\_psh.dgn



**UTILITIES BY OTHERS**

**NOTE:**  
 ALL PROPOSED UTILITY WORK SHOWN ON THIS SHEET WILL BE DONE BY OTHERS. NO PAYMENT WILL BE MADE TO THE CONTRACTOR FOR PROPOSED UTILITY WORK SHOWN ON THIS SHEET.

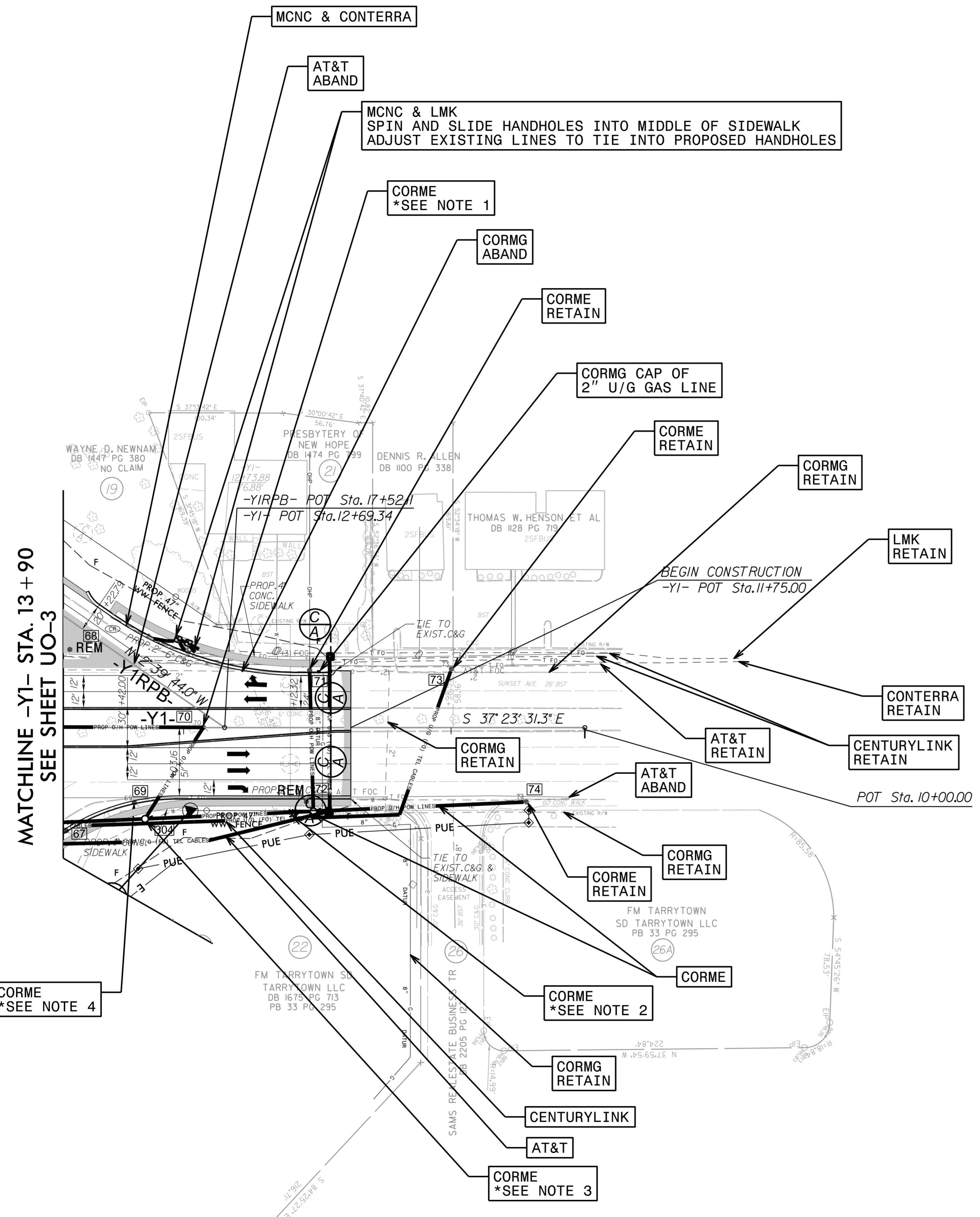


MATCHLINE -L- STA. 119+00 SEE SHEET UO-8

5/14/99  
 3/13/2017  
 P:\Engineering\UBD\Proj\U3330\ut\_r.dwg\1\_U009\_psh.dgn

### UTILITIES BY OTHERS

NOTE:  
 ALL PROPOSED UTILITY WORK SHOWN ON THIS SHEET WILL BE DONE BY OTHERS. NO PAYMENT WILL BE MADE TO THE CONTRACTOR FOR PROPOSED UTILITY WORK SHOWN ON THIS SHEET.



NOTES:  
 1: CITY OF ROCKY MOUNT ENERGY RESOURCES ELECTRIC DIVISION TO REMOVE EXISTING POLES AND OH LINES DURING PRECONSTRUCTION THEN PERMANENTLY INSTALL OH LINES ON NEWLY RELOCATED POLES AFTER BRIDGE CONSTRUCTION  
 2: CITY OF ROCKY MOUNT ENERGY RESOURCES ELECTRIC DIVISION TO INSTALL TEMPORARY POLES AND ANCHORS DURING PRECONSTRUCTION AND WILL REMOVE AFTER BRIDGE CONSTRUCTION  
 3: CITY OF ROCKY MOUNT ENERGY RESOURCES ELECTRIC DIVISION TO INSTALL NEW POLES & OH LINES AFTER BRIDGE CONSTRUCTION  
 4: CITY OF ROCKY MOUNT ENERGY RESOURCES ELECTRIC DIVISION OR CENTURYLINK TO MAINTAIN EXISTING POLES UNTIL SUNSET AVE IS CLOSED

5/14/99  
 3/13/2017  
 P:\Projects\Engineering\UBD\Proj\U3330\ut\_r.dgn