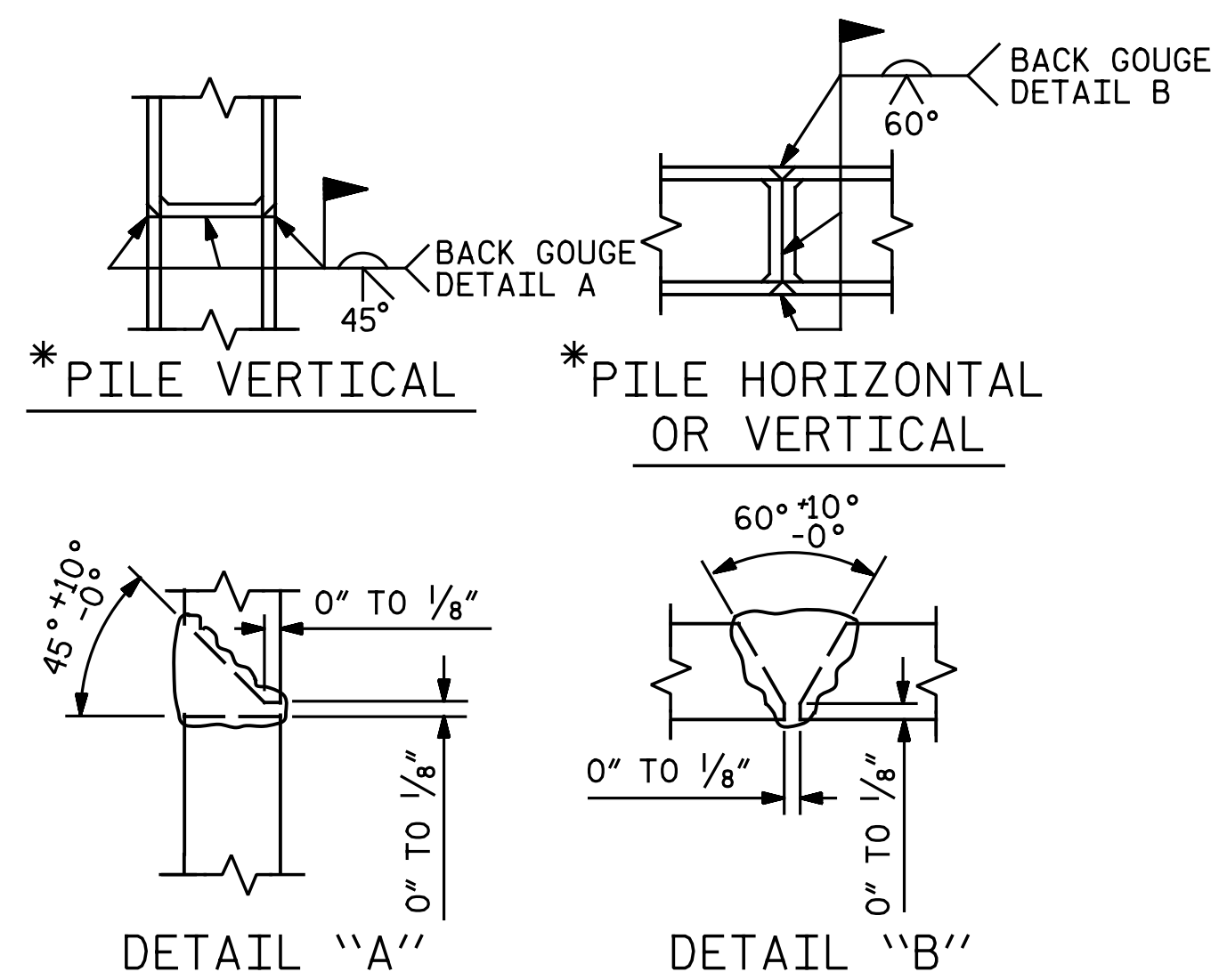


BAGGED STONE AND PIPE SHALL BE PLACED IMMEDIATELY AFTER COMPLETION OF END BENT EXCAVATION. PIPE MAY BE EITHER CONCRETE, CORRUGATED STEEL, CORRUGATED ALUMINUM ALLOY, OR CORRUGATED PLASTIC. PERFORATED PIPE WILL NOT BE ALLOWED.

BAGGED STONE SHALL REMAIN IN PLACE UNTIL THE ENGINEER DIRECTS THAT IT BE REMOVED. THE CONTRACTOR SHALL REMOVE AND DISPOSE OF SILT ACCUMULATIONS AT BAGGED STONE WHEN SO DIRECTED BY THE ENGINEER. BAGS SHALL BE REMOVED AND REPLACED WHENEVER THE ENGINEER DETERMINES THAT THEY HAVE DETERIORATED AND LOST THEIR EFFECTIVENESS.

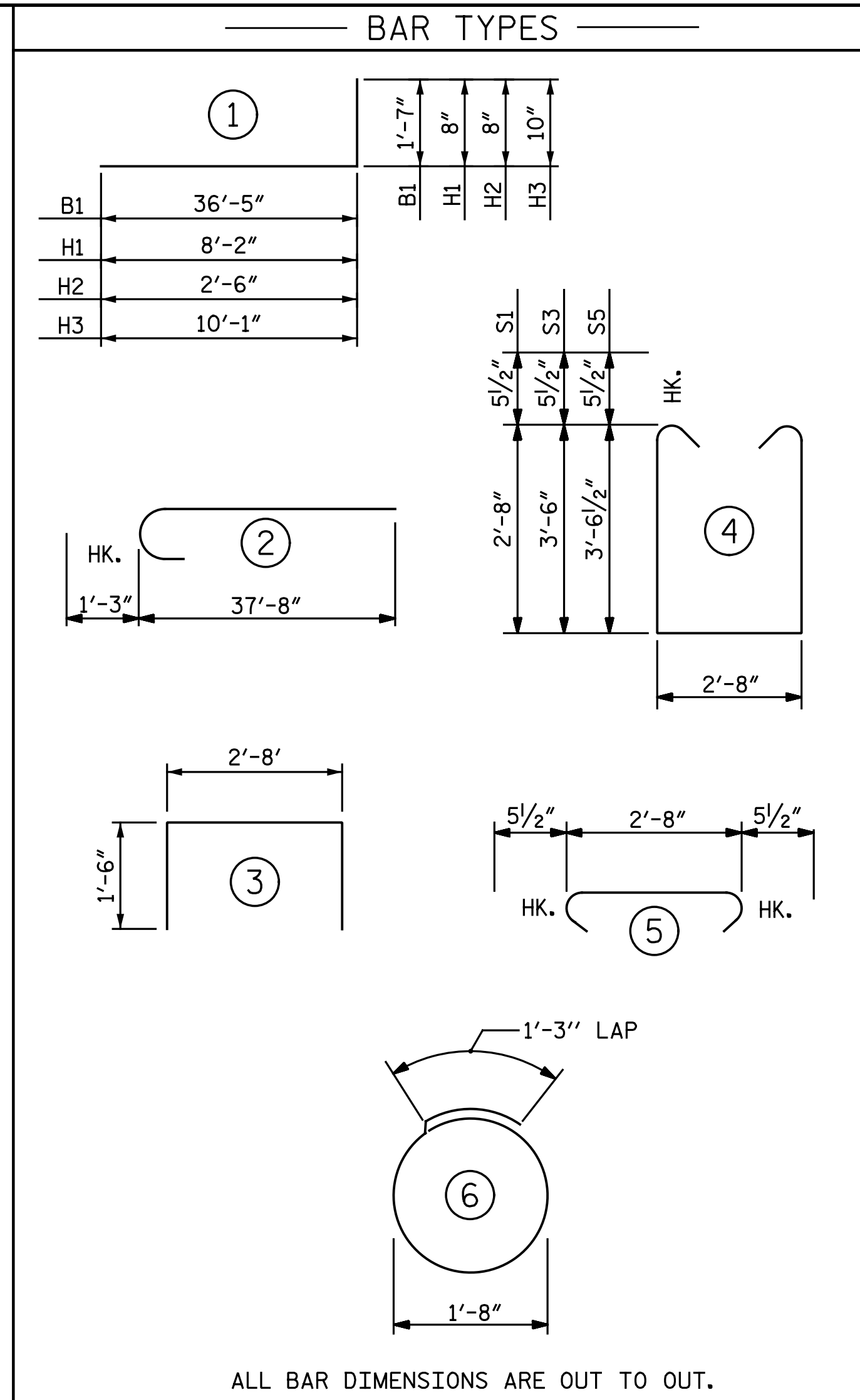
NO SEPARATE PAYMENT WILL BE MADE FOR THIS WORK AND THE ENTIRE COST OF THIS WORK SHALL BE INCLUDED IN THE UNIT CONTRACT PRICE BID FOR THE SEVERAL PAY ITEMS.

TEMPORARY DRAINAGE AT END BENT



PILE SPLICE DETAILS

* POSITION OF PILE DURING WELDING.



ALL BAR DIMENSIONS ARE OUT TO OUT.

BILL OF MATERIAL

END BENT 2

STAGE I						STAGE II							
BAR	NO.	SIZE	TYPE	LENGTH	WEIGHT	BAR	NO.	SIZE	TYPE	LENGTH	WEIGHT		
B1	8	#9		38' - 0"	1,034	B1	8	#9		38' - 0"	1,034		
B2	8	#9	STR	37' - 5"	1,018	B2	8	#9	STR	37' - 5"	1,018		
B3	4	#9	2	38' - 11"	529	B3	4	#9	2	38' - 11"	529		
B4	4	#9	STR	38' - 8"	526	B4	4	#9	STR	38' - 8"	526		
B5	4	#9	STR	29' - 1"	396	B6	24	#4	STR	24' - 8"	395		
B6	24	#4	STR	24' - 8"	395	B9	38	#4	STR	2' - 8"	68		
B7	12	#4	STR	8' - 4"	67	B10	4	#9	STR	24' - 1"	328		
B8	4	#4	STR	5' - 2"	14	B11	16	#4	STR	8' - 11"	95		
B9	40	#4	STR	2' - 8"	71	B12	4	#4	STR	6' - 9"	18		
H1	17	#4	1	8' - 10"	100	H1	17	#4	1	8' - 10"	100		
H2	12	#4	1	3' - 2"	25	H2	12	#4	1	3' - 2"	25		
H3	5	#5	1	10' - 11"	57	H3	5	#5	1	10' - 11"	57		
S1	56	#5	4	8' - 11"	521	S1	58	#5	4	8' - 11"	539		
S2	98	#5	5	3' - 7"	366	S2	95	#5	5	3' - 7"	355		
S3	42	#5	4	10' - 7"	464	S4	32	#4	6	6' - 6"	139		
S4	32	#4	6	6' - 6"	139	S5	37	#5	4	10' - 8"	412		
U1	20	#4	3	5' - 8"	76	U1	29	#4	3	5' - 8"	110		
V1	102	#4	STR	6' - 1"	414	V1	110	#4	STR	6' - 1"	447		
V2	26	#4	STR	6' - 7"	114	V2	26	#4	STR	6' - 7"	114		
V3	2	#5	STR	2' - 7"	5	V3	2	#5	STR	2' - 7"	5		
REINFORCING STEEL						LBS.	REINFORCING STEEL						LBS.
						6,331							6,314
CLASS A CONCRETE						CLASS A CONCRETE							
POUR 1 - CAP, LOWER PART OF WING & COLLAR						C.Y.	POUR 1 - CAP, LOWER PART OF WING & COLLAR						C.Y.
						28.8							28.5
POUR 2 - UPPER PART OF WING						C.Y.	POUR 2 - UPPER PART OF WING						C.Y.
						1.6							1.6
TOTAL CLASS A CONCRETE						C.Y.	TOTAL CLASS A CONCRETE						C.Y.
						30.4							30.1
HP 12 x 53 STEEL PILES						HP 12 x 53 STEEL PILES							
NO. 8						L.F.	NO. 8						L.F.
						320							320
PILE DRIVING EQUIPMENT SETUP FOR HP 12 x 53 STEEL PILES						EA.	PILE DRIVING EQUIPMENT SETUP FOR HP 12 x 53 STEEL PILES						EA.
						8							8

DRAWN BY : N. B. SPEAKS DATE : 12-2-16
 CHECKED BY : A. H. SHARPE DATE : 12-2-16

PROJECT NO. U-3330
NASH COUNTY
 STATION: 61+03.00 -L-

SHEET 2 OF 2

DOCUMENT NOT CONSIDERED FINAL UNLESS ALL SIGNATURES COMPLETED		STATE OF NORTH CAROLINA DEPARTMENT OF TRANSPORTATION RALEIGH SUBSTRUCTURE INTEGRAL END BENT 2 DETAILS					
		REVISIONS					
		NO.	BY:	DATE:	NO.	BY:	DATE:
		1			3		
2			4				
Michael Baker INTERNATIONAL		Michael Baker Engineering 8000 Regency Parkway, Suite 600 Cary, North Carolina 27518 NC License No.: F-1084		SHEET NO. S3-39 TOTAL SHEETS 42			